

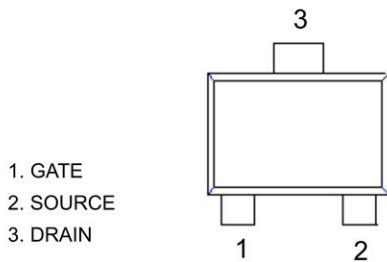
Product Summary

- V_{DS} 60V
- I_D 350mA
- $R_{DS(ON)}$ (at $V_{GS}=10V$) <5 ohm
- $R_{DS(ON)}$ (at $V_{GS}=4.5V$) <4.5 ohm
- ESD Protected:2000V

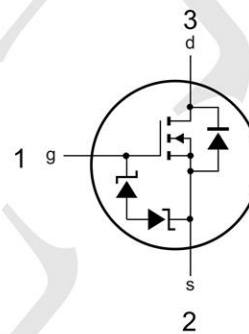
Application

- Load/Power Switching
- Interfacing Switching
- Logic Level Shift

Package and Pin Configuration
SOT-723



Circuit diagram



Marking RK * Or RK
* =wafer tracking no

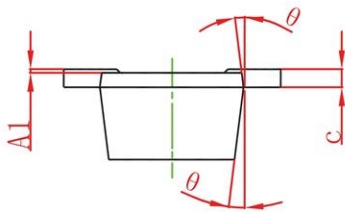
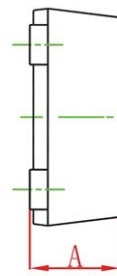
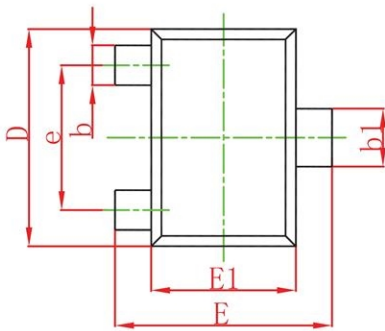
Absolute Maximum Ratings ($T_A=25^{\circ}C$ unless otherwise noted)

| Parameter | Symbol | Value | Unit |
|--------------------------|-----------|-----------|-------------|
| Drain-Source Voltage | V_{DS} | 60 | V |
| Gate-Source Voltage | V_{GS} | ± 20 | V |
| Continuous Drain Current | I_D | ± 350 | mA |
| Power Dissipation | P_D | 150 | mW |
| Junction Temperature | T_J | 150 | $^{\circ}C$ |
| Storage Temperature | T_{STG} | -55~ +150 | $^{\circ}C$ |

Electrical Characteristics ($T_A = 25^\circ\text{C}$ unless otherwise noted)

| Parameter | Symbol | Test Condition | Min | Typ | Max | Unit |
|--|---------------|--|-----|------|----------|----------|
| Drain -Source Breakdown Voltage | $V_{(BR)DSS}$ | $V_{GS} = 0V, I_D = 10\mu A$ | 60 | | | V |
| | | $V_{GS} = 0V, I_D = 3mA$ | 60 | | | |
| Gate Threshold Voltage | $V_{th(GS)}$ | $V_{DS} = V_{GS}, I_D = 250\mu A$ | 1.0 | 1.85 | 2.5 | V |
| Gate-Source Leakage Current | I_{GSS} | $V_{DS} = 0V, V_{GS} = \pm 20V$ | | | ± 10 | μA |
| Zero gate voltage drain current | I_{DSS} | $V_{DS} = 60V, V_{GS} = 0V$ | | | 1 | μA |
| Static Drain- Source On State Resistance | $R_{DS(on)}$ | $V_{GS} = 10V, I_D = 500mA$ | | | 5 | Ω |
| | | $V_{GS} = 4.5V, I_D = 200mA$ | | 1.5 | 4.3 | |
| Input Capacitance | C_{rss} | $V_{GS} = 10V$ | | | 42 | pF |
| Input Capacitance | C_{rss} | $V_{GS} = 0V$ | | | 30 | |
| Input Capacitance | C_{rss} | $V_{GS} = 1MHz$ | | | 10 | |
| Turn-on delay time | $t_{d(on)}$ | $V_{DD} = 25V, V_{GS} = 10V, R_L = 250\Omega,$ $R_{GS} = 50K, R_{GEN} = 25\Omega$ | | | 10 | ns |
| Turn-on delay time | $t_{d(on)}$ | | | | 15 | |

SOT-723 Package Outline Dimensions



| Symbol | Dimensions In Millimeters | | Dimensions In Inches | |
|----------|---------------------------|-------|----------------------|-------|
| | Min. | Max. | Min. | Max. |
| A | 0.430 | 0.500 | 0.017 | 0.020 |
| A1 | 0.000 | 0.050 | 0.000 | 0.002 |
| b | 0.170 | 0.270 | 0.007 | 0.011 |
| b1 | 0.270 | 0.370 | 0.011 | 0.015 |
| c | 0.080 | 0.150 | 0.003 | 0.006 |
| D | 1.150 | 1.250 | 0.045 | 0.049 |
| E | 1.150 | 1.250 | 0.045 | 0.049 |
| E1 | 0.750 | 0.850 | 0.030 | 0.033 |
| e | 0.800TYP. | | 0.031TYP. | |
| θ | 7° REF. | | 7° REF. | |

X-ON Electronics

Largest Supplier of Electrical and Electronic Components

Click to view similar products for [MOSFET](#) category:

Click to view products by [TECH PUBLIC](#) manufacturer:

Other Similar products are found below :

[614233C](#) [648584F](#) [IRFD120](#) [IRFF430](#) [JANTX2N5237](#) [2N7000](#) [FCA20N60_F109](#) [FDZ595PZ](#) [AOD464](#) [2SK2267\(Q\)](#) [2SK2545\(Q,T\)](#)
[405094E](#) [423220D](#) [MIC4420CM-TR](#) [VN1206L](#) [614234A](#) [715780A](#) [SSM6J414TU,LF\(T](#) [751625C](#) [PSMN4R2-30MLD](#)
[TK31J60W5,S1VQ\(O](#) [2SK2614\(TE16L1,Q\)](#) [DMN1017UCP3-7](#) [EFC2J004NUZTDG](#) [FCAB21350L1](#) [P85W28HP2F-7071](#) [DMN1053UCP4-7](#)
[NTE2384](#) [NTE2969](#) [NTE6400A](#) [DMN2080UCB4-7](#) [DMN61D9UWQ-13](#) [US6M2GTR](#) [DMN31D5UDJ-7](#) [SSM6P54TU,LF](#) [DMP22D4UFO-](#)
[7B](#) [IPS60R3K4CEAKMA1](#) [DMN1006UCA6-7](#) [DMN16M9UCA6-7](#) [STF5N65M6](#) [STU5N65M6](#) [C3M0021120D](#) [DMN13M9UCA6-7](#)
[BSS340NWH6327XTSA1](#) [MCM3400A-TP](#) [DMTH10H4M6SPS-13](#) [IRF40SC240ARMA1](#) [IPS60R1K0PFD7SAKMA1](#)
[IPS60R360PFD7SAKMA1](#) [IPS60R600PFD7SAKMA1](#)