

### Features

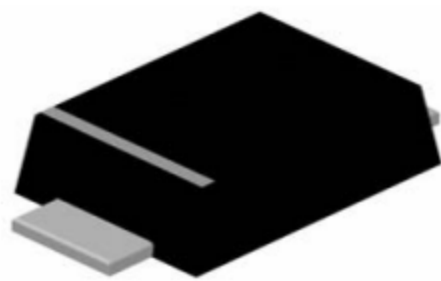
- Fast switching speed
- Surface mount package ideally suited for automatic insertion
- Low power loss, high efficiency
- Ultra thin profile package for space constrained utilization
- Lead free in compliance with EU RoHS 2.0
- Green molding compound as per IEC 61249 standard

### Mechanical Data

- Case : SOD-123FL, Plastic
- Terminals : Solderable per MIL-STD-750, Method 2026
- Approx. Weight : 0.0006 ounces, 0.017 grams.
- Polarity : Color band denotes cathode end

### Dimensions and Pin Configuration

#### SOD123FL



**Marking: GR**

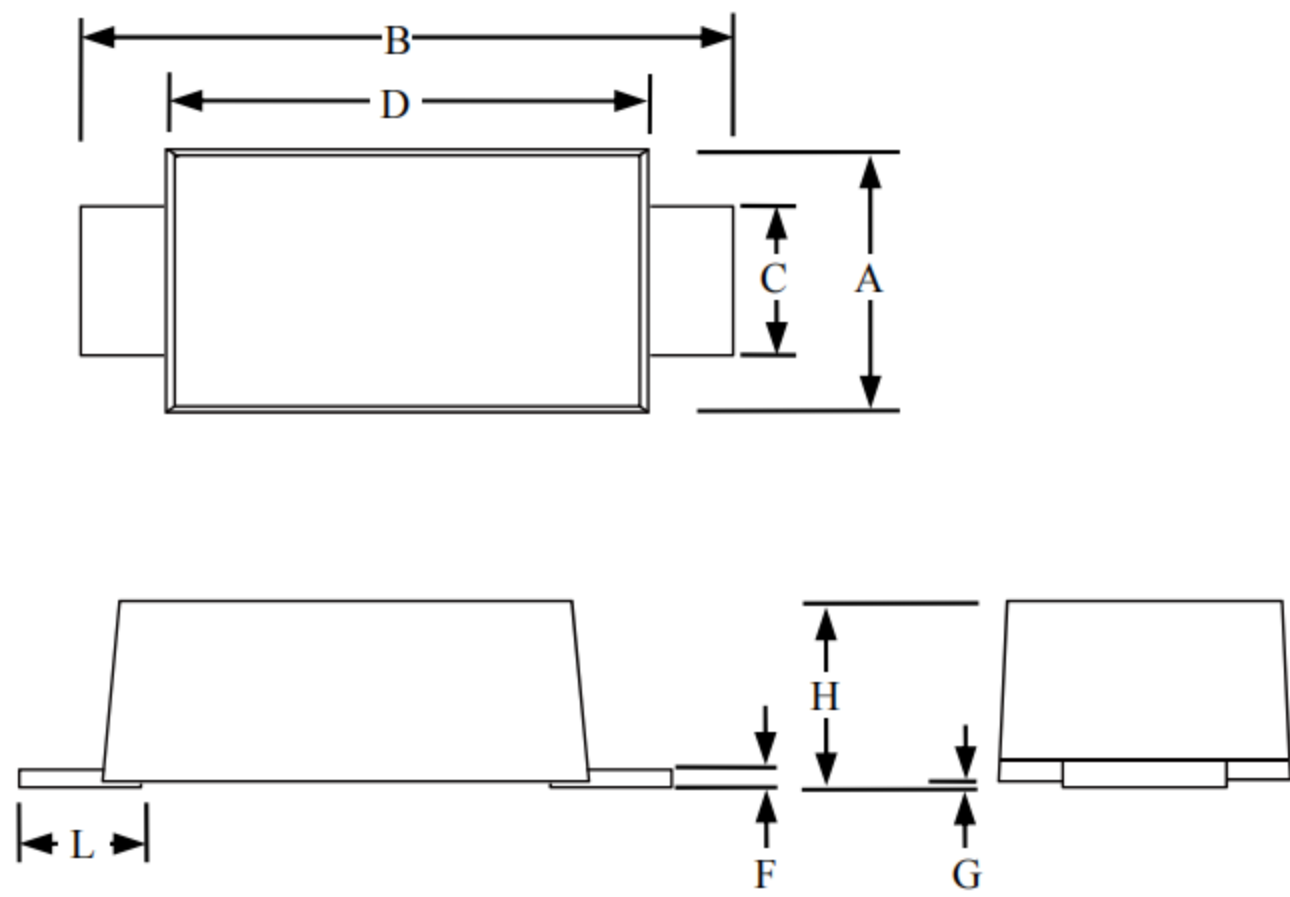
### Maximum Ratings & Thermal Characteristics

| PARAMETER   | SYMBOL      | MBR2H100SFT3G-TP | UNITS |
|---|-------------|------------------|-------|
| Reverse Voltage   | $V_R$       | 100              | V     |
| Peak Reversr Voltage  | $V_{RRM}$   | 100              | V     |
| Average Rectified Current at $T_A=75^\circ\text{C}$           | $I_{F(AV)}$ | 2                | A     |
| Non-repetitive Peak Forward Surge Current at $t=8.3\text{ms}$ | $I_{FSM}$   | 50               | A     |

### Electrical Characteristics

| PARAMETER   | SYMBOL          | MBR2H100SFT3G-TP | UNITS              |
|---|-----------------|------------------|--------------------|
| Minimum Reverse Breakdown Voltage at $I_R=500\mu\text{A}$ | $V_R$           | 100              | V                  |
| Maximum Forward Voltage at $I_F=2\text{A}$                | $V_F$           | 0.85             | V                  |
| Reverse Leakage Current at $V_{RRM}$                      | $I_R$           | 40               | $\mu\text{A}$      |
| Typical Thermal Resistance, Junction to Ambient           | $R_{\theta JA}$ | 60               | $^\circ\text{C/W}$ |
| Operating Junction and Storage Temperature Range          | $T_J, T_{STG}$  | -50 to +150      | $^\circ\text{C}$   |

**Package Outline Dimensions: SOD123FL**



| SOD-123FL |        |     |       |             |     |      |
|-----------|--------|-----|-------|-------------|-----|------|
| Dimension | Inches |     |       | Millimeters |     |      |
|           | MIN    | NOM | MAX   | MIN         | NOM | MAX  |
| A         | 0.059  |     | 0.079 | 1.5         |     | 2    |
| B         | 0.134  |     | 0.154 | 3.4         |     | 3.9  |
| C         | 0.028  |     | 0.047 | 0.7         |     | 1.2  |
| D         | 0.098  |     | 0.114 | 2.5         |     | 2.9  |
| F         | 0.002  |     | 0.01  | 0.05        |     | 0.26 |
| G         | -      |     | 0.004 | -           |     | 0.1  |
| H         | 0.037  |     | 0.053 | 0.95        |     | 1.35 |
| L         | 0.014  |     | 0.035 | 0.35        |     | 0.9  |

## X-ON Electronics

Largest Supplier of Electrical and Electronic Components

*Click to view similar products for [Schottky Diodes & Rectifiers](#) category:*

*Click to view products by [TECH PUBLIC](#) manufacturer:*

Other Similar products are found below :

[MA4E2039](#) [MA4E2508M-1112](#) [MBR1545CT](#) [MMBD301M3T5G](#) [RB160M-50TR](#) [D83C](#) [BAS16E6433HTMA1](#) [BAT 54-02LRH E6327](#)  
[NRVBAF360T3G](#) [NSR05F40QNXT5G](#) [NTE555](#) [JANS1N6640](#) [SK310-T](#) [SK34B-TP](#) [SS3003CH-TL-E](#) [GA01SHT18](#)  
[CRS10I30A\(TE85L,QM](#) [MA4E2501L-1290](#) [MBRA140TRPBF](#) [MBRB30H30CT-1G](#) [BAT 15-04R E6152](#) [JANTX1N5712-1](#) [DMJ3940-000](#)  
[SB007-03C-TB-E](#) [SK33B-TP](#) [NRVBB20100CTT4G](#) [NRVBM120LT1G](#) [NTSB30U100CT-1G](#) [VS-6CWQ10FNHM3](#) [CRG04\(T5L,TEMQ\)](#)  
[ACDBA1100LR-HF](#) [ACDBA1200-HF](#) [ACDBA240-HF](#) [ACDBA3100-HF](#) [CDBQC0530L-HF](#) [CDBQC0240LR-HF](#) [ACDBA260LR-HF](#)  
[ACDBA1100-HF](#) [MA4E2502L-1246](#) [10BQ015-M3/5BT](#) [NRVBM120ET1G](#) [CRS08TE85LQM](#) [PMAD1108-LF](#) [B120Q-13-F](#) [1N5819T-G](#)  
[B0530WSQ-7-F](#) [PDS1040Q-13](#) [B160BQ-13-F](#) [SDM05U20CSP-7](#) [B140S1F-7](#)