

Features

- Operation voltage range: 1.65~5.5V
- Low power current: $I_{CC}=10\mu A(\text{Max})$
- $\pm 24\text{mA}$ output drive ($V_{CC}=3.3\text{V}$)
- High noise immunity
- Power down protection
- ESD Protection Exceeds JESD 22
- 2000-V Human-Body Model (A114-A)
- 1000-V Charged-Device Model (C101)
- SOT23-5 Package Available
- SOT353 Package Available
- SOT553 Package Available

General Description

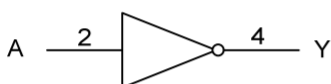
The SN74LVC1G04 is a single inverter gate, it provides the function $Y = \bar{A}$.

This device has power-down protective circuit, preventing device destruction when it is powered down.

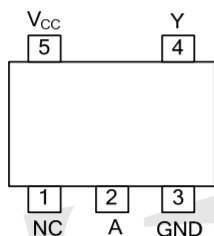
Ordering Information

ORDER NUMBER	PACKAGE DESCRIPTION	PACKAGE OPTION
SN74LVC1G04DBVR	SOT23-5	Tape and Reel,3000
SN74LVC1G04DCKR	SOT353	Tape and Reel,3000
SN74LVC1G04DRLR	SOT553	Tape and Reel,4000

Logic Diagram



Pin Configuration



SOT23-5
SOT353
SOT553

Marking

SN74LVC1G04DBVR Marking:C04F

SN74LVC1G04DCKR Marking:CC5

SN74LVC1G04DRLR Marking:CC7

Function Table

INPUT	OUTPUT
A	Y
H	L
L	H

Absolute Maximum Ratings

PARAMETER		SYMBOL	RATINGS	UNIT
Supply Voltage		V_{CC}	-0.5 ~ 6.5	V
Input Voltage		V_{IN}	-0.5 ~ 6.5	V
Output Voltage(Active Mode)		V_{OUT}	-0.5 ~ $V_{CC}+0.5$	V
Output Voltage(Power-Down Mode)		V_{OUT}	-0.5 ~ 6.5	V
Input Clamp Current($V_{IN}<0$)		I_{IK}	-50	mA
Output Clamp Current($V_{OUT}<0$)		I_{OK}	-50	mA
Output Current		I_{OUT}	± 50	mA
V_{CC} or GND Current		I_{CC}	± 100	mA
Power Dissipation ($T_A=-40\sim+125^\circ\text{C}$)	SOT-23-5	P_D	300	mW
	SOT-353		250	mW
Junction Temperature		T_J	+150	$^\circ\text{C}$
Storage Temperature		T_{STG}	-65 ~ +150	$^\circ\text{C}$

- Notes: 1. Absolute maximum ratings are those values beyond which the device could be permanently damaged. Absolute maximum ratings are stress ratings only and functional device operation is not implied.
2. The input and output voltage ratings may be exceeded if the input and output current ratings are observed.

Thermal Data

PARAMETER		SYMBOL	RATINGS	UNIT
Junction to Case	SOT-23-5	θ_{JC}	75	$^\circ\text{C/W}$
	SOT-353		145	

Recommended Operating Conditions

PARAMETER	SYMBOL	CONDITIONS	MIN	TYP	MAX	UNIT
Supply Voltage	V_{CC}	Operating	1.65		5.5	V
		Data retention only	1.5			
Input Voltage	V_{IN}		0		5.5	V
Output Voltage	V_{OUT}		0		V_{CC}	V
Input Transition Rise or Fall Rate	t_R, t_F	$V_{CC} = 1.8\text{V}\pm 0.15\text{V}, 2.5\text{V}\pm 0.2\text{V}$			20	ns/V
		$V_{CC} = 3.3\text{V}\pm 0.3\text{V}$			10	ns/V
		$V_{CC} = 5\text{V}\pm 0.5\text{V}$			5	ns/V
Operating Temperature	T_A		-40		+125	$^\circ\text{C}$

Electrical Characteristics

PARAMETER	SYMBOL	TEST CONDITIONS	T _A =25°C			T _A =-40°C~+125°C			UNIT
			MIN	TYP	MAX	MIN	TYP	MAX	
Input Voltage High-Level	V _{IH}	V _{CC} = 1.65V~1.95V	0.65× V _{CC}			0.65× V _{CC}			V
		V _{CC} = 2.3V~2.7V	1.7			1.7			
		V _{CC} = 2.7V~3.6V	2			2			
		V _{CC} = 4.5V~5.5V	0.7× V _{CC}			0.7× V _{CC}			
Input Voltage Low-Level	V _{IL}	V _{CC} = 1.65V~1.95V			0.35× V _{CC}			0.35× V _{CC}	V
		V _{CC} = 2.3V~2.7V			0.7			0.7	
		V _{CC} = 2.7V~3.6V			0.8			0.8	
		V _{CC} = 4.5V~5.5V			0.3× V _{CC}			0.3× V _{CC}	
Output Voltage High-Level	V _{OH}	V _{CC} = 1.65V~5.5V, I _{OH} =-100μA	V _{CC} -0.1			V _{CC} -0.1			V
		V _{CC} = 1.65V, I _{OH} =-4mA	1.2			0.95			
		V _{CC} = 2.3V, I _{OH} =-8mA	1.9			1.7			
		V _{CC} = 3V, I _{OH} =-16mA	2.2			1.9			
		V _{CC} = 3V, I _{OH} =-24mA	2.3			2.0			
		V _{CC} = 4.5V, I _{OH} =-32mA	3.8			3.4			
Output Voltage Low-Level	V _{OL}	V _{CC} = 1.65V~5.5V, I _{OL} =100μA			0.1			0.1	V
		V _{CC} = 1.65V, I _{OL} =4mA			0.45			0.7	
		V _{CC} = 2.3V, I _{OL} =8mA			0.3			0.45	
		V _{CC} = 3V, I _{OL} =16mA			0.4			0.6	
		V _{CC} = 3V, I _{OL} =24mA			0.55			0.8	
		V _{CC} = 4.5V, I _{OL} =32mA			0.55			0.8	
Input Leakage Current	I _{I(LEAK)}	V _{CC} = 0~5.5V, V _{IN} =5.5V or GND		±0.1	±5			±5	μA
Power OFF Leakage Current	I _{OFF}	V _{CC} = 0V, V _{IN} or V _{OUT} =5.5V		±0.1	±10			±10	μA
Quiescent Supply Current	I _Q	V _{CC} = 1.65V~5.5V, V _{IN} =5.5 or GND, I _{OUT} =0		0.1	10			10	μA
Additional Quiescent Supply Current	Δ I _Q	V _{CC} = 3V~5.5V, One input at V _{CC} - 0.6V, other inputs at V _{CC} or GND		5	500			500	μA

Note: All typical values are measured at V_{CC}=3.3V and T_A=25°C.

Dynamic Characteristics (Input: t_R, t_F≤3ns; P_{RR}≤1MHz)

PARAMETER	SYMBOL	TEST CONDITIONS	T _A =25°C			T _A =-40°C~+125°C			UNIT
			MIN	TYP	MAX	MIN	TYP	MAX	
Propagation Delay From Input (A or B) to Output (Y)	t _{PLH} / t _{PHL}	V _{CC} = 1.8V±0.15V, C _L =15 pF	1.0		11			14	ns
		V _{CC} = 2.5V±0.2V, C _L =15 pF	0.5		8			10.5	ns
		V _{CC} = 3.3V±0.3V, C _L =15 pF	0.5		6			8	ns
		V _{CC} = 5V±0.5V, C _L =15 pF	0.5		5			6	ns
		V _{CC} = 1.8V±0.15V, C _L =30pF	1.0		12			15	ns
		V _{CC} = 2.5V±0.2V, C _L =30pF	0.5		9			11.5	ns
		V _{CC} = 3.3V±0.3V, C _L =50 pF	0.5		7			9	ns
		V _{CC} = 5V±0.5V, C _L =50 pF	0.5		6			7	ns

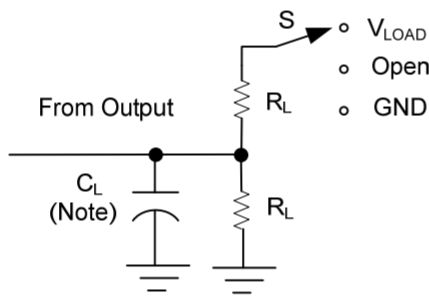


Operating Characteristics

PARAMETER	SYMBOL	TEST CONDITIONS	MIN	TYP	MAX	UNIT
Input Capacitance	C_{IN}	$V_{CC} = 3.3V, V_{IN} = V_{CC}$ or GND		3.5		pF
Power Dissipation Capacitance	C_{PD}	$V_{CC} = 1.8V, f = 10MHz$		16		pF
		$V_{CC} = 2.5V, f = 10MHz$		18		pF
		$V_{CC} = 3.3V, f = 10MHz$		18		pF
		$V_{CC} = 5V, f = 10MHz$		20		pF

Note: All typical values are measured at $T_A = 25^\circ C$.

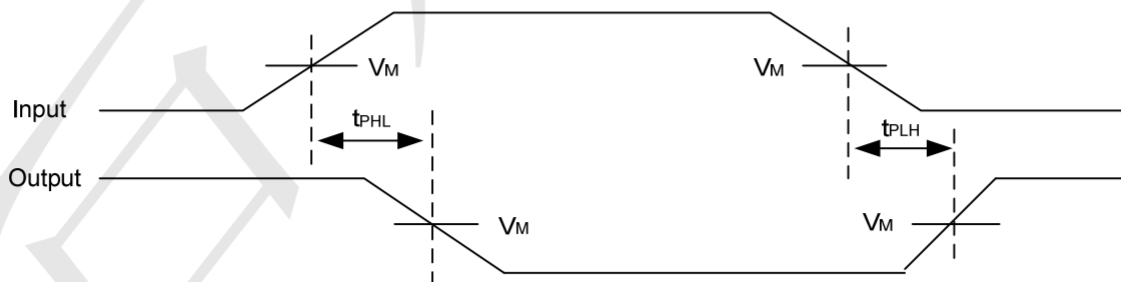
Test Circuit And Waveforms



TEST	S
t_{PLH}/t_{PHL}	Open
t_{PLZ}/t_{PZL}	V_{LOAD}
t_{PHZ}/t_{PZH}	GND

Note: C_L includes probe and jig capacitance.

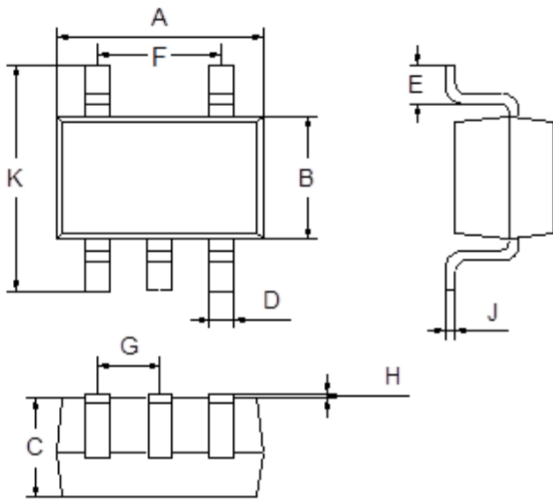
V_{CC}	V_{IN}	t_r, t_f	V_M	V_{LOAD}	C_L	R_L	V_{Δ}
$1.8V \pm 0.15V$	V_{CC}	$\leq 2ns$	$V_{CC}/2$	$2 \times V_{CC}$	15pF	1M Ω	0.15V
$2.5V \pm 0.2V$	V_{CC}	$\leq 2ns$	$V_{CC}/2$	$2 \times V_{CC}$	15pF	1M Ω	0.15V
$3.3V \pm 0.3V$	3 V	$\leq 2.5ns$	1.5V	6V	15pF	1M Ω	0.3V
$5V \pm 0.5V$	V_{CC}	$\leq 2.5ns$	$V_{CC}/2$	$2 \times V_{CC}$	15pF	1M Ω	0.3V
$1.8V \pm 0.15V$	V_{CC}	$\leq 2ns$	$V_{CC}/2$	$2 \times V_{CC}$	30pF	1k Ω	0.15V
$2.5V \pm 0.2V$	V_{CC}	$\leq 2ns$	$V_{CC}/2$	$2 \times V_{CC}$	30pF	500 Ω	0.15V
$3.3V \pm 0.3V$	3 V	$\leq 2.5ns$	1.5V	6V	50pF	500 Ω	0.3V
$5V \pm 0.5V$	V_{CC}	$\leq 2.5ns$	$V_{CC}/2$	$2 \times V_{CC}$	50pF	500 Ω	0.3V





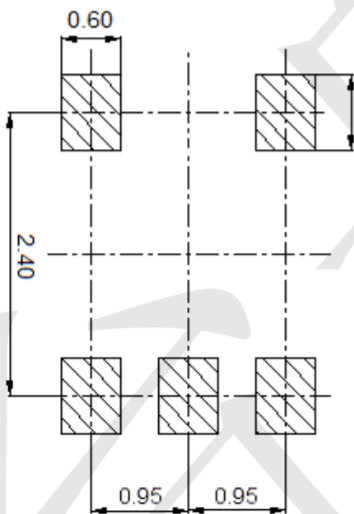
Package Outline Dimensions (Unit: mm)

SOT23-5



Dimension	Min.	Max.
A	2.80	3.00
B	1.50	1.70
C	1.00	1.20
D	0.35	0.45
E	0.35	0.55
F	1.80	2.00
G	0.90	1.00
H	0.02	0.10
J	0.10	0.20
K	2.60	3.00

Mounting Pad Layout (Unit: mm)





TECH PUBLIC

—台丹电子—

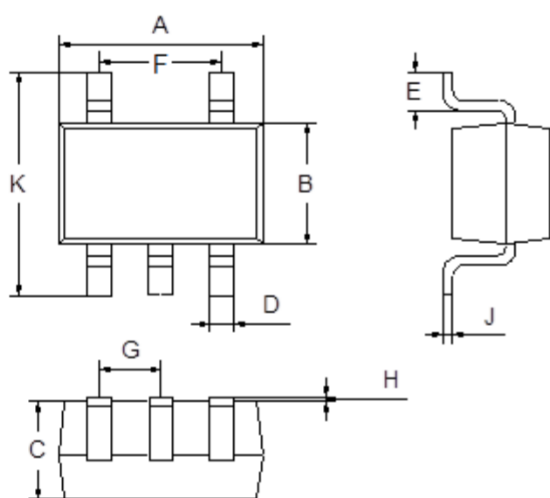
SN74LVC1G04

Single Inverter Gate

www.sot23.com.tw

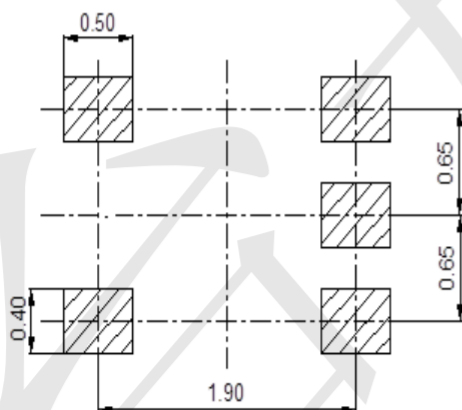
Package Outline Dimensions (Unit: mm)

SOT353



Dimension	Min.	Max.
A	2.00	2.20
B	1.15	1.35
C	0.85	1.05
D	0.15	0.35
E	0.25	0.40
F	1.20	1.40
G	0.60	0.70
H	0.02	0.10
J	0.05	0.15
K	2.20	2.40

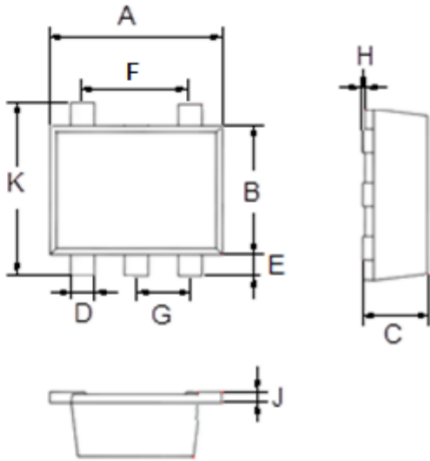
Mounting Pad Layout (Unit: mm)





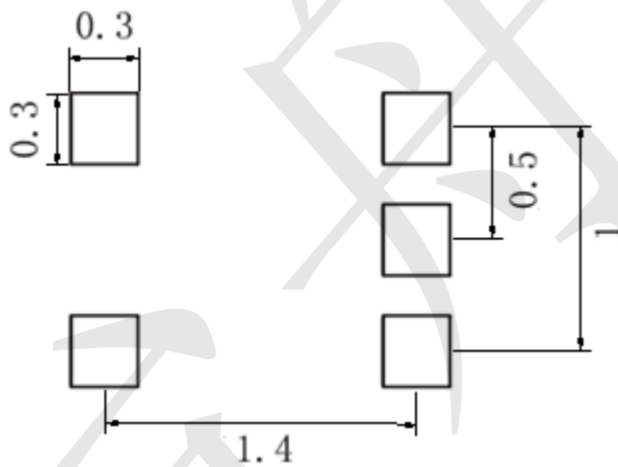
Package Outline Dimensions (Unit: mm)

SOT553



Dimension	Min.	Max.
A	1.500	1.700
B	1.100	1.300
C	0.525	0.600
D	0.170	0.270
E	0.100	0.300
F	0.400	0.600
G	0.450	0.550
H	0.000	0.050
J	0.090	0.160
K	1.500	1.700

Mounting Pad Layout (Unit: mm)



X-ON Electronics

Largest Supplier of Electrical and Electronic Components

Click to view similar products for [Logic Gates](#) category:

Click to view products by [TECH PUBLIC](#) manufacturer:

Other Similar products are found below :

[NL17SG32DFT2G](#) [CD4068BE](#) [NL17SG86DFT2G](#) [NLX1G11AMUTCG](#) [NLX1G97MUTCG](#) [74LS38](#) [74LVC1G08Z-7](#) [CD4025BE](#)
[NLV17SZ00DFT2G](#) [NLV17SZ126DFT2G](#) [NLV27WZ17DFT2G](#) [NLV74HC02ADR2G](#) [74HC32S14-13](#) [74LS133](#) [74LVC1G32Z-7](#)
[74LVC1G86Z-7](#) [NLV74HC14ADR2G](#) [NLV74HC20ADR2G](#) [NLVVHC1G09DFT1G](#) [NLX2G86MUTCG](#) [74LVC2G32RA3-7](#)
[74LVC2G00HD4-7](#) [NL17SG02P5T5G](#) [74LVC2G86HK3-7](#) [NLVVHC1G14DFT2G](#) [NLX1G99DMUTWG](#) [NLVVHC1G00DFT2G](#)
[NLV7SZ57DFT2G](#) [NLV74VHC04DTR2G](#) [NLV27WZ00USG](#) [NLU1G86CMUTCG](#) [NLU1G08CMUTCG](#) [NL17SZ32P5T5G](#)
[NL17SZ00P5T5G](#) [NL17SH02P5T5G](#) [74AUP2G00RA3-7](#) [NLVVHC1GT00DFT2G](#) [NLV74HC02ADTR2G](#) [NLX1G332CMUTCG](#)
[NLVHCT132ADTR2G](#) [NL17SG86P5T5G](#) [NL17SZ05P5T5G](#) [NLV74VHC00DTR2G](#) [NLVVHC1G02DFT1G](#) [NLV74HC86ADR2G](#)
[74LVC2G86RA3-7](#) [NL17SZ38DBVT1G](#) [NLV18SZ00DFT2G](#) [NLVVHC1G07DFT1G](#) [NLVVHC1G02DFT2G](#)