

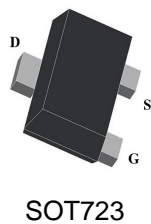
Product Summary

- * $R_{DS(on)} = \text{Typ } 530\text{m}\Omega @ V_{GS} = -4.5\text{V}$
- * $R_{DS(on)} = \text{Typ } 730\text{m}\Omega @ V_{GS} = -2.5\text{V}$
- * Lead free product is acquired
- * Surface mount package
- * P-channel switch with low $R_{DS(on)}$
- * Operated at low logic level gate drive
- * ESD protection

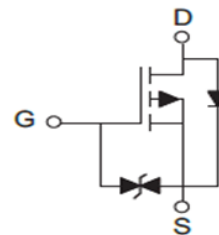
Application

- * Load/Power switch
- * Interfacing, logic switching
- * Battery management for ultra portable electronics

Package and Pin Configuration



Circuit diagram



Absolute Maximum Ratings ($T_A = 25^\circ\text{C}$ unless otherwise noted)

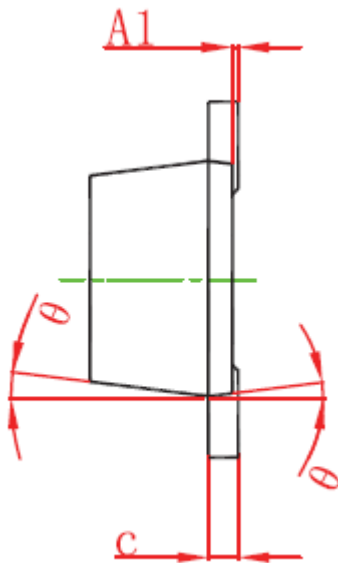
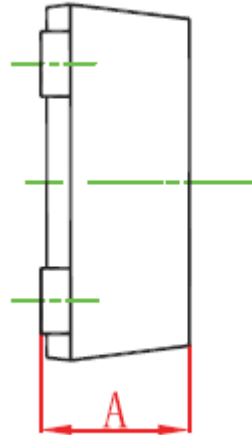
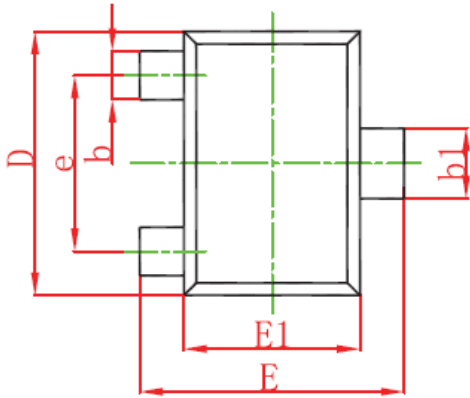
Parameter	Symbol	Value	Unit
Drain-Source Voltage	V_{DS}	-20	V
Gate-Source Voltage	V_{GS}	± 12	V
Continuous Drain Current @25°C (note 1)	I_D	-0.85	A
Pulsed Drain Current @25°C (tp=10 μs)	I_{DM}	-2.1	A
Diode Continuous Forward Current	I_S	-0.5	A
Power Dissipation @25°C (note 1)	P_D	690	mW
Thermal Resistance from Junction to Ambient (note 1)	R_{QJA}	180	$^\circ\text{C}/\text{W}$
Maximum Junction Temperature	T_J	150	$^\circ\text{C}$
Storage Temperature	T_{STG}	-55 ~ +150	$^\circ\text{C}$

Electrical Characteristics ($T_A = 25^\circ\text{C}$ unless otherwise noted)

Parameter	Symbol	Test Condition	Min	Typ	Max	Unit
Drain-source Breakdown Voltage	$V_{(BR)DS}$	$V_{GS} = 0V, I_D = -250\mu A$	-20			V
Drain-to-Source Leakage Current	I_{DS}	$V_{DS} = -16V, V_{GS} = 0V$			-1	μA
Gate-Body Leakage Current	I_{GS}	$V_{GS} = \pm 12V, V_{DS} = 0V$			± 10	μA
Gate Threshold Voltage (note 2)	$V_{GS(th)}$	$V_{DS} = V_{GS}, I_D = -250\mu A$	-0.5	-0.75	-1	V
Static Drain-Source On-Resistance (note 2)	$R_{DS(on)}$	$V_{GS} = -4.5V, I_D = -0.55A$		530	640	$m\Omega$
		$V_{GS} = -2.5V, I_D = -0.45A$		730	950	$m\Omega$
		$V_{GS} = -1.8V, I_D = -0.35A$		1300	1950	$m\Omega$
Forward transconductance (note 2)	g_{fs}	$V_{DS} = -5V, I_D = -0.55A$		1		S
Diode forward voltage	V_{SD}	$I_S = -1A, V_{GS} = 0V$		-0.75	-1.1	V
Dynamic Characteristics (note 4)						
Total Gate Charge	Q_g	$V_{DS} = -10V, I_D = -1A,$ $V_{GS} = -2.5V$		0.53		nC
Total Gate Charge	Q_g	$V_{DS} = -10V$		0.8		nC
Gate-Source Charge	Q_{gs}	$I_D = -1A$		0.2		nC
Gate-Drain Charge	Q_{gd}	$V_{GS} = -4.5V$		0.2		nC
	t_{rr}	$I = -$		9.2		nS
Reverse Recovery Time	t_{rr}	$I_F = -1A, V_{GS} = 0,$		9.2		nS
Reverse Recovery Charge	Q_{rr}	$dI_F/dt = 100A/\mu s$		0.8		nC
Input capacitance	C_{iss}	$V_{DS} = -10V$		58		pF
Output capacitance	C_{oss}	$V_{GS} = 0V$		5.7		pF
Reverse transfer capacitance	C_{rss}	$f = 1MHz$		4.4		pF
Turn-on delay time (note 3)	$t_{d(on)}$	$V_{GS} = -4.5V$		0.4		μS
Turn-on rise time (note 3)	t_r	$V_{DS} = -10V$		0.06		μS
Turn-off delay time (note3)	$t_{d(off)}$	$I_D = -1.33A$		0.02		μS
Turn-off fall time (note 3)	t_f	$R_{GEN} = 3\Omega$		0.8		μS

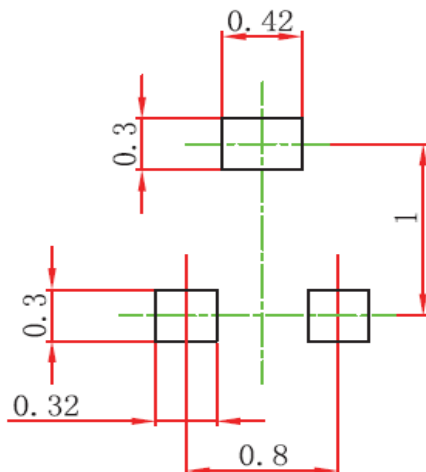
SOT723 - Package Outline Drawing

www.sot23.com.tw



Symbol	DIMENSIONS			
	MILLIMETERS		INCHES	
	MIN	MAX	MIN	MAX
A	0.43	0.50	0.017	0.020
A1	0.00	0.05	0.000	0.002
b	0.17	0.27	0.007	0.011
b1	0.27	0.37	0.011	0.015
c	0.08	0.15	0.003	0.006
D	1.15	1.25	0.045	0.049
E	1.15	1.25	0.045	0.049
E1	0.75	0.85	0.03	0.033
e	0.8 typ		0.031 typ	
θ	7° REF		7° REF	

Suggested Land Pattern



X-ON Electronics

Largest Supplier of Electrical and Electronic Components

Click to view similar products for [MOSFET](#) category:

Click to view products by [TECH PUBLIC](#) manufacturer:

Other Similar products are found below :

[614233C](#) [648584F](#) [MCH3443-TL-E](#) [MCH6422-TL-E](#) [FDPF9N50NZ](#) [FW216A-TL-2W](#) [FW231A-TL-E](#) [APT5010JVR](#) [NTNS3A92PZT5G](#)
[IRF100S201](#) [JANTX2N5237](#) [2SK2464-TL-E](#) [2SK3818-DL-E](#) [FCA20N60_F109](#) [FDZ595PZ](#) [STD6600NT4G](#) [FSS804-TL-E](#) [2SJ277-DL-E](#)
[2SK1691-DL-E](#) [2SK2545\(Q,T\)](#) [D2294UK](#) [405094E](#) [423220D](#) [MCH6646-TL-E](#) [TPCC8103,L1Q\(CM](#) [367-8430-0972-503](#) [VN1206L](#)
[424134F](#) [026935X](#) [051075F](#) [SBVS138LT1G](#) [614234A](#) [715780A](#) [NTNS3166NZT5G](#) [751625C](#) [873612G](#) [IRF7380TRHR](#)
[IPS70R2K0CEAKMA1](#) [RJK60S3DPP-E0#T2](#) [RJK60S5DPK-M0#T0](#) [APT5010JVFR](#) [APT12031JFLL](#) [APT12040JVR](#) [DMN3404LQ-7](#)
[NTE6400](#) [JANTX2N6796U](#) [JANTX2N6784U](#) [JANTXV2N5416U4](#) [SQM110N05-06L-GE3](#) [SIHF35N60E-GE3](#)