

Double-Tip Pointed Cotton Stick Product# 2313

Product Description

Tightly wrapped, pre-cleaned cotton ensures the least amount of extractable contaminants. Pointed tip and rigid head provide precision, but aggressive cleaning.

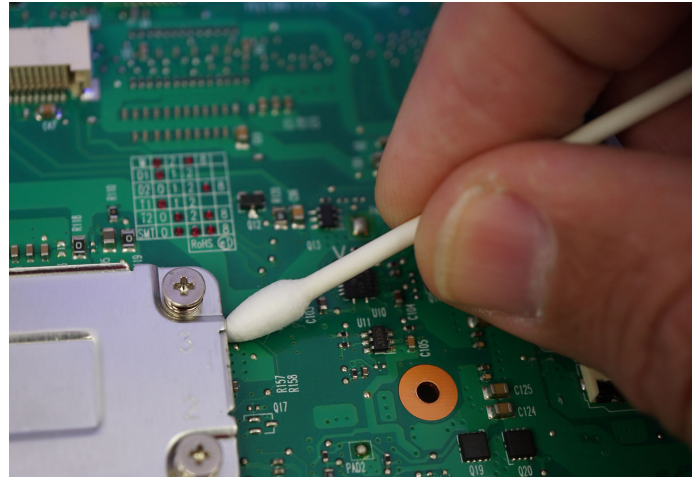
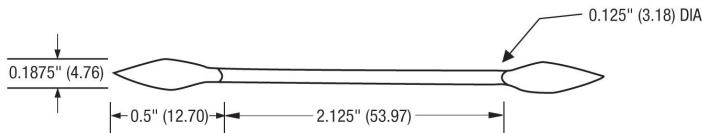
Features / Benefits

- Tightly wrapped cotton
- Precision pointed tip
- Low extractable
- Solvent resistant

Product Dimensions

2313-30PK Double-Tip Pointed Cotton Stick (mm)

30 swabs/bag, 24 bags/case



Environmental Policy

Techspray[®] is committed to developing products to ensure a safer and cleaner environment. We will continue to meet and sustain the regulations of all federal, state and local government agencies.

Resources

Techspray[®] products are supported by global sales, technical and customer services resources.

For additional technical information on this product or other Techspray[®] products in the United States, call the technical sales department at 800-858-4043, email tsales@techspray.com or visit our web site at: www.techspray.com.

Important Notice to Purchaser/User: The information in this publication is based on tests that we believe are reliable. The results may vary due to differences in tests type and conditions. We recommend that each user evaluate the product to determine its suitability for the intended application. Conditions of use are outside our control and vary widely. Techspray's only obligation and your only solution is replacement of product that is shown to be defective when you receive it. In no case will Techspray[®] be liable for any special, incidental, or consequential damages based on breach of warranty, negligence or any other theory.

X-ON Electronics

Largest Supplier of Electrical and Electronic Components

Click to view similar products for [Swabs](#) category:

Click to view products by [Techspray](#) manufacturer:

Other Similar products are found below :

[2310-10](#) [8112A-100](#) [2317-50](#) [CCT2425](#) [38040](#) [CM502](#) [CC50](#) [CF3050](#) [814-10](#) [2306-1000](#) [2303-1000](#) [2316-50](#) [48040](#) [21050](#) [36060ESD](#)
[38040ESD](#) [41050](#) [41050ESD](#) [44070](#) [44070ESD](#) [CF1050](#) [CF4050](#) [CT100](#) [CX50](#) [2313-30](#) [2314-10](#) [810-50](#) [2301-100](#) [52121](#) [2307-1000](#)
[2309-10](#) [2311-10](#) [CT2000](#) [2301-1000](#) [2302-50](#) [2300-100 \(100 PK\)](#) [48042F](#) [25123X](#) [25183](#) [31040ESD](#) [CS25](#) [CT200](#) [CT5000](#) [CXM50](#)
[810-15](#) [810D-15](#) [810D-50](#) [811-100](#) [812-10](#) [812-50](#)