

# DEUTSCH SOLID CONTACTS FOR COPPER CABLES

INDUSTRY STANDARD CONTACTS

HARSH ENVIRONMENT RESISTANT SOLID  
CONTACTS



# DEUTSCH SOLID CONTACTS FOR COPPER CABLES



## HARSH ENVIRONMENT RESISTANCE

- High temperature operating
- Upgraded vibration resistance for engines
- NRG bands

## INDUSTRIALISATION

- Certified production process (EN9001 and EN9100)
- Strategic manufacturing locations in 2 geographical areas for worldwide distribution

## RELIABILITY

- EN3155 certification
- Customer Qualified Part Lists (ESC, ABS)

## WIDE OFFERING

- More than 1400 references (standard and specific)

TE connectivity offers a complete range of solid contacts integrated into most of TE's DEUTSCH connectors currently available on aerospace, defense and marine markets.

These contacts are designed for standard applications up to 200°C but also to help withstand higher temperatures and higher vibration constraints up to 260°C for engine applications.

According to markets and customer needs, our contacts can be qualified to the EN3155 standard or to specific customer standards such as ESC or ABS qualifications.

Main contact families are :

## SIGNAL CRIMP CONTACTS

---

- **AWG #24 to 12**

## THERMOCOUPLE CONTACTS

---

- **AWG #22 to 12**

## POWER CRIMP CONTACTS

---

- **AWG #10 to 0**

## ACCESSORIES

---

- **Crimp tool**
- **Positioner**
- **Insertion/Extraction tool**
- **Sealing plugs**
- **Dummy contacts**

## DATA CONTACTS

---

- **Coax**
- **Triax**
- **Quadrx**
- **Twinax**

**TE Components . . . TE Technology . . . TE Know-how . . .**

AMP | AGASTAT | CII | HARTMAN | KILOVAC | MICRODOT | NANONICS | POLAMCO | Raychem  
SEACON | Rochester | DEUTSCH

Empower Engineers to Solve Problems, Moving the World Forward.



## DMC-M Series Contacts EN4165

Active area / Mating Size	Part No.	Former Syst. Part No.	MIL Ref.	EN Ref.	Type	Color Bands		Marking yellow or black	Contact Material	Barrel
						AS39029	EN3155			
24	724-0001-24	-	-	-	P	-	-	-	-	standard
	724-0003-24	-	-	-	S	-	-	-	-	standard
23	182-4043-23	-	-	-	P	-	Green-Purple	-	-	standard
	182-4042-23	-	-	-	S	-	Green-Purple	-	-	standard
22	724-0001-22	-	M39029/58-360	EN3155-008M2222	P	Orange-Blue-Black		-	-	standard
	724-0003-22	-	M39029/57-354	EN3155-003F2222	S	Orange-Green-Yellow		-	-	standard
22	182-0860-22*	-	-	EN3155-070M2220	P	-	Red-Green	-	-	enlarged
	182-0862-22*	-	-	EN3155-071F2220	S	-	Red-Green	-	-	enlarged
22 (Shunt)	724-1272-22	-	-	EN3155-082F2222	S	-	-	-	-	standard
20	724-0001-20	-	M39029/58-363	EN3155-008M2020	P	Orange-Blue-Orange		-	-	standard
	724-0003-20	-	M39029/57-357	EN3155-003F2020	S	Orange-Green-Purple		-	-	standard
20	724-1063-20	-	-	EN3155-008M2018	P	-	Brown-Red	-	-	enlarged
	724-1064-20	-	-	EN3155-003F2018	S	-	Brown-Red	-	-	enlarged
16	724-0001-16	-	M39029/58-364	EN3155-008M1616	P	Orange-Blue-Yellow		-	-	standard
	724-0003-16	-	M39029/57-358	EN3155-003F1616	S	Orange-Green-Grey		-	-	standard
16	724-1063-16	-	-	EN3155-008M1614	P	-	White-Blue	-	-	enlarged
	724-1064-16	-	-	EN3155-003F1614	S	-	White-Blue	-	-	enlarged
12	724-0001-12	-	M39029/58-365	EN3155-008M1212	P	Orange-Blue-Green		-	-	standard
	724-0003-12	-	M39029/57-359	EN3155-003F1212	S	Orange-Green-White		-	-	standard
12	724-1063-12	-	-	-	P	-	White-Yellow	-	-	enlarged
	724-1064-12	-	-	-	S	-	White-Yellow	-	-	enlarged
08 (Power)	724-0001-08	-	-	-	P	-	-	-	-	standard
	724-0003-08	-	-	-	S	-	-	-	-	standard
08 (Power)	182-0001-08	-	-	-	P	-	-	-	-	standard
	182-0003-08	-	-	-	S	-	-	-	-	standard
08 (Power)	182-0393-08	-	-	-	P	-	-	-	-	reduced
	182-0394-08	-	-	-	S	-	-	-	-	reduced

\* flange diameter 1.8



# DTS-K/DTS-S Series Contacts

## MIL-DTL-38999 III

Active area / Mating Size	Part No.	Former Syst. Part No.	MIL Ref.	EN Ref.	Type	Color Bands		Marking yellow or black	Contact Material	Barrel
						AS39029	EN3155			
22	724-0001-22	-	M39029/58-360	EN3155-008M2222	P	Orange-Blue-Black	-	-	-	standard
	724-0007-22	-	M39029/56-348	EN3155-009F2222	S	Orange-Yellow-Grey	-	-	-	standard
22	182-0441-22*	-	M39029/107-620	-	P	Blue-Red-Black	-	-	-	standard
	182-0447-22*	-	M39029/106-614	-	S	Blue-Brown-Yellow	-	-	-	standard
20	724-0001-20	-	M39029/58-363	EN3155-008M2020	P	Orange-Blue-Orange	-	-	-	standard
	724-0007-20	-	M39029/56-351	EN3155-009F2020	S	Orange-Green-Brown	-	-	-	standard
20	724-1105-20	-	-	-	P	-	Green-Red	-	-	reduced
	724-1106-20	-	-	-	S	-	Green-Red	-	-	reduced
20	182-0068-20	-	-	-	P	-	Red-Red	Black	Kn	standard
	182-0009-20	-	-	-	S	Yellow-Grey-Purple	-	-	-	standard
20	182-0069-20	-	-	-	P	-	Red-Red	Yellow	Kp	standard
	182-0010-20	-	-	-	S	Yellow-Grey-Grey	-	-	-	standard
20	182-0441-20*	-	M39029/107-621	-	P	Blue-Red-Brown	-	-	-	standard
	182-0447-20*	-	M39029/106-615	-	S	Blue-Brown-Green	-	-	-	standard
16	724-0001-16	-	M39029/58-364	EN3155-008M1616	P	Orange-Blue-Yellow	-	-	-	standard
	724-0007-16	-	M39029/56-352	EN3155-009F1616	S	Orange-Green-Red	-	-	-	standard
16	182-0441-16*	-	M39029/107-622	-	P	Blue-Red-Red	-	-	-	standard
	182-0447-16*	-	M39029/106-616	-	S	Blue-Brown-Blue	-	-	-	standard
12	724-0001-12	-	M39029/58-365	EN3155-008M1212	P	Orange-Blue-Green	-	-	-	standard
	724-0007-12	-	M39029/56-353	EN3155-009F1212	S	Orange-Green-Orange	-	-	-	standard
12	182-0441-12*	-	M39029/107-623	-	P	Blue-Red-Orange	-	-	-	standard
	182-0447-12*	-	M39029/106-617	-	S	Blue-Brown-Purple	-	-	-	standard
8	182-0001-08	-	-	-	P	-	-	-	-	standard
	182-0003-08	-	-	-	S	-	-	-	-	standard
8	724-0001-08	-	-	-	P	-	-	-	-	standard
	724-0003-08	-	-	-	S	-	-	-	-	standard

\* 1500 cycles



# DTS-K/DTS-S Series Contacts

## MIL-DTL-38999 III Classes K and S

Active area / Mating Size	Part No.	Former Syst. Part No.	MIL Ref.	EN Ref.	Type	Color Bands		Marking yellow or black	Contact Material	Barrel
						AS39029	EN3155			
22	724-0001-22	-	M39029/58-360	EN3155-008M2222	P	Orange-Blue-Black	-	-	-	standard
	724-0007-22	-	M39029/56-348	EN3155-009F2222	S	Orange-Yellow-Grey	-	-	-	standard
20	724-0001-20	-	M39029/58-363	EN3155-008M2020	P	Orange-Blue-Orange	-	-	-	standard
	097-0236-20*	-	M39029/56-351	-	S	Orange-Green-Brown	-	-	-	standard
20	724-0001-20	-	M39029/58-363	EN3155-008M2020	P	Orange-Blue-Orange	-	-	-	standard
	724-0007-20	-	M39029/56-351	EN3155-009F2020	S	Orange-Green-Brown	-	-	-	standard
20	182-0068-20	-	-	-	P	-	Red-Red	Black	Kn	standard
	182-0009-20	-	-	-	S	Yellow-Grey-Purple	-	-	-	standard
20	182-0069-20	-	-	-	P	-	Red-Red	Yellow	Kp	standard
	182-0010-20	-	-	-	S	Yellow-Grey-Grey	-	-	-	standard
20	724-1063-20	-	-	EN3155-008M2018	P	-	Brown-Red	-	-	Enlarged
	724-1079-20	-	-	EN3155-009F2018	S	-	-	-	-	standard
16	724-0001-16	-	M39029/58-364	EN3155-008M1616	P	Orange-Blue-Yellow	-	-	-	standard
	097-0236-16*	-	M39029/56-352	-	S	Orange-Green-Red	-	-	-	standard
16	724-0001-16	-	M39029/58-364	EN3155-008M1616	P	Orange-Blue-Yellow	-	-	-	standard
	724-0007-16	-	M39029/56-352	EN3155-009F1616	S	Orange-Green-Red	-	-	-	standard
12	724-0001-12	-	M39029/58-365	EN3155-008M1212	P	Orange-Green-Orange	-	-	-	standard
	097-0236-12*	-	M39029/56-353	-	S	Orange-Blue-Orange	-	-	-	standard
12	724-0001-12	-	M39029/58-365	EN3155-008M1212	P	Orange-Green-Orange	-	-	-	standard
	724-0007-12	-	M39029/56-353	EN3155-009F1212	S	Orange-Blue-Orange	-	-	-	standard
08	182-0393-08	-	-	-	P	-	-	-	-	standard
	182-0394-08	-	-	-	S	-	-	-	-	standard
08	724-0001-08	-	-	-	P	-	-	-	-	standard
	724-0003-08	-	-	-	S	-	-	-	-	standard
08	182-4037-08	-	-	EN3155-065M0808	P	-	Red	-	-	standard
	182-4038-08	-	-	EN3155-083F0808	S	-	-	-	-	standard
08	182-4034-08	-	-	EN3155-065M0810	P	-	White-Red	-	-	reduced
	182-4035-08	-	-	EN3155-065M0810	S	-	-	-	-	reduced

\* NRG band contacts



# FAST Series Contacts EN3545

## Signal

Active area / Mating Size	Part No.	Former Syst. Part No.	MIL Ref.	EN Ref.	Type	Color Bands			Wire Range			
						AS39029	EN3155	Barrel	AWG	mm <sup>2</sup>		
22	724-0001-22	-	M39029/58-360	EN3155-008M2222	P	Orange-Blue-Black			-	standard	22-26	0.15 - 0.4
	724-0003-22	-	M39029/57-354	EN3155-003F2222	S	Orange-Green-Yellow						
20	182-0120-20	-	-	EN3155-014M2018	P	-			Brown-Red	standard	18-24	0.25 - 1
	182-0118-20	-	-	EN3155-015F2018	S	-						
16	724-0001-16	-	M39029/58-364	EN3155-008M1616	P	Orange-Blue-Yellow			-	standard	16-20	0.6 - 1.2
	724-0003-16	-	M39029/57-358	EN3155-003F1616	S	Orange-Green-Grey						
16	724-1063-16	-	-	EN3155-008M1614	P	-			White-Blue	enlarged	14-20	0.6 - 2
	724-1064-16	-	-	EN3155-003F1614	S	Yellow-Grey-Purple						

## K6 Power contacts for copper cable

Active area / Mating Size	Part No.	Former Syst. Part No.	ABS réf Contact	Sleeve	Type	Sealing plug	Wire Range	
						EN3155	AWG	mm <sup>2</sup>
6	182-0672-06	182-0657-06	ABS1403-1K6KZ06	ABS0992B03	P	Green-Green	6	14
	182-0704-06	182-0700-06	ABS1344-1K6LZ06		S			
8	182-0672-08	182-0661-06	ABS1403-1K6KZ08	ABS0992B01	P	Green-Red	8	9
	182-0704-08	182-0701-06	ABS1344-1K6LZ08		S			
10	182-0672-10	182-0664-06	ABS1403-1K6KZ10	ABS0992B02	P	Green-Brown	10-12	3-5
	182-0704-10	182-0702-06	ABS1344-1K6LZ10		S			

## Dummy contact

Active area / Mating Size	Part No.	ASNE Ref.
20	182-0899-20	ASNE0397FY2000
16	182-4114-16	ASNE0397FY1600
12	182-0899-12	ASNE0397FY1200



# FDBA/AFD/DFE Series Contacts

## EN3646

Active area / Mating Size	Part No.	Former Syst. Part No.	MIL Ref.	EN Ref.	Type	Color Bands		Marking yellow or black	Contact Material	Barrel	
						AS39029	EN3155				
20	006-0937-20A-A834	-	M39029/4-110	-	P	Brown-Brown-Black		-	-	-	standard
	006-0912-20A-A834	-	M39029/5-115	-	S	Brown-Brown-Green		-	-	-	standard
20	006-0937-20A	004-0139-20	-	EN3155-018M2020	P	-	-	Red	-	-	standard
	006-0912-20A	004-0140-20	-	EN3155-019F2020	S	-	-	-	-	-	standard
20	006-0044-20A	004-0141-20	-	EN3155-018M2018	P	-	-	Brown-Red	-	-	enlarged
	006-0055-20A	004-0142-20	-	EN3155-018F2018	S	-	-	-	-	-	enlarged
20	006-0972-20A	0641-24-2059C	-	-	P	-	-	Black-Red	-	-	reduced
	006-0973-20A	0603-21-2059C	-	-	S	-	-	-	-	-	reduced
20	006-1186-20	006-1131-20A	-	-	P	-	-	Red-Red + white dot	Yellow	Kp	standard
	006-1187-20	006-1134-20A	-	-	S	-	-	-	-	-	standard
20	006-1188-20	0641-15-2000	-	-	P	-	-	Red-Red + white dot	Black	Kn	standard
	006-1189-20	0603-15-2000A	-	-	S	-	-	-	-	-	standard
20	006-1060-20	-	-	-	P	-	-	-	-	Co	enlarged
	006-1062-20	-	-	-	S	-	-	-	-	-	enlarged
20	025-0404-20	-	-	-	P	-	-	Purple-Red	Yellow	Kp	enlarged
	025-0405-20	-	-	-	S	-	-	Purple-Red	-	-	enlarged
20	025-0402-20	-	-	-	P	-	-	Purple-Red	Black	Kn	enlarged
	025-0403-20	-	-	-	S	-	-	Purple-Red	-	-	enlarged
20	025-0406-20	-	-	-	P	-	-	Purple-Red	-	Co	enlarged
	025-0407-20	-	-	-	S	-	-	-	-	-	enlarged
16	006-0937-16A	004-0139-16	-	EN3155-018M1616	P	-	-	Blue-Blue	-	-	standard
	006-0912-16A	004-0140-16	-	EN3155-019F1616	S	-	-	-	-	-	standard
16	006-1102-16A	004-0141-16	-	EN3155-018M1614	P	-	-	White-Blue	-	-	enlarged
	006-1104-16A	004-0142-16	-	EN3155-019F1614	S	-	-	-	-	-	enlarged
16	004-0160-16A	-	-	EN3155-018M1618	P	-	-	Brown-Blue	-	-	reduced
	004-0159-16A	-	-	EN3155-019F1618	S	-	-	-	-	-	reduced
16	006-1168-16A	109026-16A	-	-	P	-	-	Red-Blue	-	-	reduced
	006-1169-16A	109027-16A	-	-	S	-	-	-	-	-	reduced
16	025-0870-16A	-	-	-	P	-	-	White-Blue	-	-	reduced
	025-0871-16A	-	-	-	S	-	-	-	-	-	reduced
16	006-0982-16	-	-	-	P	-	-	Blue-Blue	Yellow	Kp	-
	097-0037-16	-	-	-	S	-	-	-	-	-	-
16	006-0983-16	-	-	-	P	-	-	Blue-Blue	Black	Kn	-
	097-0036-16	-	-	-	S	-	-	-	-	-	-
12	006-0937-12A	004-0139-12	-	EN3155-018M1212	P	-	-	Yellow-Yellow	-	-	standard
	006-0912-12A	004-0140-12	-	EN3155-019F1212	S	-	-	-	-	-	standard
12	006-1157-12A	109028A	-	-	P	-	-	Blue-Yellow	-	-	reduced
	006-1159-12A	109029A	-	-	S	-	-	-	-	-	reduced
8	005-0893-08	101333-59	-	-	P	-	-	-	-	-	Soldered
	005-0896-08	101334-59	-	-	S	-	-	-	-	-	Soldered
8 (87)	005-0257-08	-	-	-	P	-	-	Brown-Red	-	-	Crimping
	005-0258-08	-	-	-	S	-	-	-	-	-	Crimping
8 (88)	006-0041-08	DF06A 041 08	-	-	P	-	-	Red	-	-	Crimping
	006-0040-08	DF06A 040 08	-	-	S	-	-	-	-	-	Crimping





## TJ/FMJ Series Contacts

Active area / Mating Size	Part No.	Former Syst. Part No.	MIL Ref.	EN Ref.	Type	Color Bands		Marking yellow or black	Contact Material	Barrel
						AS39029	EN3155			
22	020-0511-22	-	-	EN3155-016M2222	P	-	-	-	-	standard
22	019-0857-22	100060-56	-	-	P	-	-	-	-	standard
22	123-0001-22	-	-	-	P	-	-	-	-	standard
22	182-0671-22	-	-	-	P	-	-	-	-	standard
22	019-1055-22	-	-	-	P	-	-	-	-	standard
20	182-0908-20	-	-	EN3155-016M2020	P	-	-	-	-	standard
20	123-0001-20	-	-	-	P	-	-	-	-	standard
20	020-0511-20	-	-	EN3155-016M2018	P	-	-	-	-	enlarged
20	020-0008-20	1841-1-5620	-	-	P	-	-	-	-	enlarged
20	182-0439-20	-	-	-	P	-	-	-	-	enlarged
16	020-0511-16	-	-	EN3155-016M1616	P	-	-	-	-	standard
16	020-0008-16	1841-1-5616	-	-	P	-	-	-	-	standard
16	123-0001-16	-	-	-	P	-	-	-	-	standard
16	182-0439-16	182-0439-16	-	-	P	-	-	-	-	standard
12	020-0511-12	020-0511-12	-	EN3155-016M1212	P	-	-	-	-	standard
12	020-0008-12	1841-1-5612	-	-	P	-	-	-	-	standard
12	018-0011-12	DF 18-011-12	-	-	P	-	-	-	-	reduced
12	018-0865-12	DF 18-865-12-9056	-	-	P	-	-	-	-	reduced
12	123-0001-12	-	-	-	P	-	-	-	-	standard
8	020-0008-08	1841-5-5608	-	-	P	-	-	-	-	standard
8	018-0007-08	DF 18-007-08-9056	-	-	P	-	-	-	-	reduced
8	018-0878-08	DF 18-878-08	-	-	P	-	-	-	-	reduced
8	018-0008-08	DF 18-008-08-9056	-	-	P	-	-	-	-	reduced



# 983 (200 °C) Series Contacts

## EN2997 (200 °C)

### Signal

Active area / Mating Size	Part No.	Former Syst. Part No.	MIL Ref.	EN Ref.	Type	Color Bands		Marking yellow or black	Contact Material	Barrel																																																																																																																																																																																																																																																																											
						AS39029	EN3155																																																																																																																																																																																																																																																																														
22	097-0287-22	-	-	EN3155-078M2222	P	-	Green	-	-	standard																																																																																																																																																																																																																																																																											
	097-0288-22	-	-	EN3155-079F2222	S	-					20	006-0937-20A	004-0139-20	-	EN3155-018M2020	P	-	Red	-	-	standard	006-0912-20A	004-0140-20	-	EN3155-019F2020	S	-	20	006-0044-20A	004-0141-20	-	EN3155-018M2018	P	-	Brown-Red	-	-	enlarged	006-0055-20A	004-0142-20	-	EN3155-018F2018	S	-	20	006-0972-20A	0641-24-2059C	-	-	P	-	Black-Red	-	-	reduced	006-0973-20A	0603-21-2059C	-	-	S	-	20	006-1186-20	006-1131-20A	-	-	P	-	Red-Red + white dot	Yellow	Kp	standard	006-1187-20	006-1134-20A	-	-	S	-	20	006-1188-20	0641-15-2000	-	-	P	-	Red-Red + white dot	Black	Kn	standard	006-1189-20	0603-15-2000A	-	-	S	-	20	025-0404-20	-	-	-	P	-	Purple-Red	Yellow	Kp	enlarged	025-0405-20	-	-	-	S	-	20	025-0402-20	-	-	-	P	-	Purple-Red	Black	Kn	enlarged	025-0403-20	-	-	-	S	-	16	006-0937-16A	004-0139-16	-	EN3155-018M1616	P	-	Blue-Blue	-	-	standard	006-0912-16A	004-0140-16	-	EN3155-019F1616	S	-	16	006-1102-16A	004-0141-16	-	EN3155-018M1614	P	-	White-Blue	-	-	enlarged	006-1104-16A	004-0142-16	-	EN3155-019F1614	S	-	16	004-0160-16A	-	-	EN3155-018M1618	P	-	Brown-Blue	-	-	reduced	004-0159-16A	-	-	EN3155-019F1618	S	-	16	006-1168-16A	109026-16A	-	-	P	-	Red-Blue	-	-	reduced	006-1169-16A	109027-16A	-	-	S	-	16	025-0870-16A	-	-	-	P	-	White-Blue	-	-	reduced	025-0871-16A	-	-	-	S	-	16	006-0982-16	-	-	-	P	-	Blue-Blue	Yellow	Kp	-	097-0037-16	-	-	-	S	-	16	006-0983-16	-	-	-	P	-	Blue-Blue	Black	Kn	-	097-0036-16	-	-	-	S	-	12	006-0937-12A	004-0139-12	-	EN3155-018M1212	P	-	Yellow-Yellow	-	-	standard	006-0912-12A	004-0140-12	-	EN3155-019F1212	S	-	12	006-1157-12A	109028A	-	-	P	-	Blue-Yellow	-	-	reduced	006-1159-12A
20	006-0937-20A	004-0139-20	-	EN3155-018M2020	P	-	Red	-	-	standard																																																																																																																																																																																																																																																																											
	006-0912-20A	004-0140-20	-	EN3155-019F2020	S	-					20	006-0044-20A	004-0141-20	-	EN3155-018M2018	P	-	Brown-Red	-	-	enlarged	006-0055-20A	004-0142-20	-	EN3155-018F2018	S	-	20	006-0972-20A	0641-24-2059C	-	-	P	-	Black-Red	-	-	reduced	006-0973-20A	0603-21-2059C	-	-	S	-	20	006-1186-20	006-1131-20A	-	-	P	-	Red-Red + white dot	Yellow	Kp	standard	006-1187-20	006-1134-20A	-	-	S	-	20	006-1188-20	0641-15-2000	-	-	P	-	Red-Red + white dot	Black	Kn	standard	006-1189-20	0603-15-2000A	-	-	S	-	20	025-0404-20	-	-	-	P	-	Purple-Red	Yellow	Kp	enlarged	025-0405-20	-	-	-	S	-	20	025-0402-20	-	-	-	P	-	Purple-Red	Black	Kn	enlarged	025-0403-20	-	-	-	S	-	16	006-0937-16A	004-0139-16	-	EN3155-018M1616	P	-	Blue-Blue	-	-	standard	006-0912-16A	004-0140-16	-	EN3155-019F1616	S	-	16	006-1102-16A	004-0141-16	-	EN3155-018M1614	P	-	White-Blue	-	-	enlarged	006-1104-16A	004-0142-16	-	EN3155-019F1614	S	-	16	004-0160-16A	-	-	EN3155-018M1618	P	-	Brown-Blue	-	-	reduced	004-0159-16A	-	-	EN3155-019F1618	S	-	16	006-1168-16A	109026-16A	-	-	P	-	Red-Blue	-	-	reduced	006-1169-16A	109027-16A	-	-	S	-	16	025-0870-16A	-	-	-	P	-	White-Blue	-	-	reduced	025-0871-16A	-	-	-	S	-	16	006-0982-16	-	-	-	P	-	Blue-Blue	Yellow	Kp	-	097-0037-16	-	-	-	S	-	16	006-0983-16	-	-	-	P	-	Blue-Blue	Black	Kn	-	097-0036-16	-	-	-	S	-	12	006-0937-12A	004-0139-12	-	EN3155-018M1212	P	-	Yellow-Yellow	-	-	standard	006-0912-12A	004-0140-12	-	EN3155-019F1212	S	-	12	006-1157-12A	109028A	-	-	P	-	Blue-Yellow	-	-	reduced	006-1159-12A	109029A	-	-	S	-												
20	006-0044-20A	004-0141-20	-	EN3155-018M2018	P	-	Brown-Red	-	-	enlarged																																																																																																																																																																																																																																																																											
	006-0055-20A	004-0142-20	-	EN3155-018F2018	S	-					20	006-0972-20A	0641-24-2059C	-	-	P	-	Black-Red	-	-	reduced	006-0973-20A	0603-21-2059C	-	-	S	-	20	006-1186-20	006-1131-20A	-	-	P	-	Red-Red + white dot	Yellow	Kp	standard	006-1187-20	006-1134-20A	-	-	S	-	20	006-1188-20	0641-15-2000	-	-	P	-	Red-Red + white dot	Black	Kn	standard	006-1189-20	0603-15-2000A	-	-	S	-	20	025-0404-20	-	-	-	P	-	Purple-Red	Yellow	Kp	enlarged	025-0405-20	-	-	-	S	-	20	025-0402-20	-	-	-	P	-	Purple-Red	Black	Kn	enlarged	025-0403-20	-	-	-	S	-	16	006-0937-16A	004-0139-16	-	EN3155-018M1616	P	-	Blue-Blue	-	-	standard	006-0912-16A	004-0140-16	-	EN3155-019F1616	S	-	16	006-1102-16A	004-0141-16	-	EN3155-018M1614	P	-	White-Blue	-	-	enlarged	006-1104-16A	004-0142-16	-	EN3155-019F1614	S	-	16	004-0160-16A	-	-	EN3155-018M1618	P	-	Brown-Blue	-	-	reduced	004-0159-16A	-	-	EN3155-019F1618	S	-	16	006-1168-16A	109026-16A	-	-	P	-	Red-Blue	-	-	reduced	006-1169-16A	109027-16A	-	-	S	-	16	025-0870-16A	-	-	-	P	-	White-Blue	-	-	reduced	025-0871-16A	-	-	-	S	-	16	006-0982-16	-	-	-	P	-	Blue-Blue	Yellow	Kp	-	097-0037-16	-	-	-	S	-	16	006-0983-16	-	-	-	P	-	Blue-Blue	Black	Kn	-	097-0036-16	-	-	-	S	-	12	006-0937-12A	004-0139-12	-	EN3155-018M1212	P	-	Yellow-Yellow	-	-	standard	006-0912-12A	004-0140-12	-	EN3155-019F1212	S	-	12	006-1157-12A	109028A	-	-	P	-	Blue-Yellow	-	-	reduced	006-1159-12A	109029A	-	-	S	-																													
20	006-0972-20A	0641-24-2059C	-	-	P	-	Black-Red	-	-	reduced																																																																																																																																																																																																																																																																											
	006-0973-20A	0603-21-2059C	-	-	S	-					20	006-1186-20	006-1131-20A	-	-	P	-	Red-Red + white dot	Yellow	Kp	standard	006-1187-20	006-1134-20A	-	-	S	-	20	006-1188-20	0641-15-2000	-	-	P	-	Red-Red + white dot	Black	Kn	standard	006-1189-20	0603-15-2000A	-	-	S	-	20	025-0404-20	-	-	-	P	-	Purple-Red	Yellow	Kp	enlarged	025-0405-20	-	-	-	S	-	20	025-0402-20	-	-	-	P	-	Purple-Red	Black	Kn	enlarged	025-0403-20	-	-	-	S	-	16	006-0937-16A	004-0139-16	-	EN3155-018M1616	P	-	Blue-Blue	-	-	standard	006-0912-16A	004-0140-16	-	EN3155-019F1616	S	-	16	006-1102-16A	004-0141-16	-	EN3155-018M1614	P	-	White-Blue	-	-	enlarged	006-1104-16A	004-0142-16	-	EN3155-019F1614	S	-	16	004-0160-16A	-	-	EN3155-018M1618	P	-	Brown-Blue	-	-	reduced	004-0159-16A	-	-	EN3155-019F1618	S	-	16	006-1168-16A	109026-16A	-	-	P	-	Red-Blue	-	-	reduced	006-1169-16A	109027-16A	-	-	S	-	16	025-0870-16A	-	-	-	P	-	White-Blue	-	-	reduced	025-0871-16A	-	-	-	S	-	16	006-0982-16	-	-	-	P	-	Blue-Blue	Yellow	Kp	-	097-0037-16	-	-	-	S	-	16	006-0983-16	-	-	-	P	-	Blue-Blue	Black	Kn	-	097-0036-16	-	-	-	S	-	12	006-0937-12A	004-0139-12	-	EN3155-018M1212	P	-	Yellow-Yellow	-	-	standard	006-0912-12A	004-0140-12	-	EN3155-019F1212	S	-	12	006-1157-12A	109028A	-	-	P	-	Blue-Yellow	-	-	reduced	006-1159-12A	109029A	-	-	S	-																																														
20	006-1186-20	006-1131-20A	-	-	P	-	Red-Red + white dot	Yellow	Kp	standard																																																																																																																																																																																																																																																																											
	006-1187-20	006-1134-20A	-	-	S	-					20	006-1188-20	0641-15-2000	-	-	P	-	Red-Red + white dot	Black	Kn	standard	006-1189-20	0603-15-2000A	-	-	S	-	20	025-0404-20	-	-	-	P	-	Purple-Red	Yellow	Kp	enlarged	025-0405-20	-	-	-	S	-	20	025-0402-20	-	-	-	P	-	Purple-Red	Black	Kn	enlarged	025-0403-20	-	-	-	S	-	16	006-0937-16A	004-0139-16	-	EN3155-018M1616	P	-	Blue-Blue	-	-	standard	006-0912-16A	004-0140-16	-	EN3155-019F1616	S	-	16	006-1102-16A	004-0141-16	-	EN3155-018M1614	P	-	White-Blue	-	-	enlarged	006-1104-16A	004-0142-16	-	EN3155-019F1614	S	-	16	004-0160-16A	-	-	EN3155-018M1618	P	-	Brown-Blue	-	-	reduced	004-0159-16A	-	-	EN3155-019F1618	S	-	16	006-1168-16A	109026-16A	-	-	P	-	Red-Blue	-	-	reduced	006-1169-16A	109027-16A	-	-	S	-	16	025-0870-16A	-	-	-	P	-	White-Blue	-	-	reduced	025-0871-16A	-	-	-	S	-	16	006-0982-16	-	-	-	P	-	Blue-Blue	Yellow	Kp	-	097-0037-16	-	-	-	S	-	16	006-0983-16	-	-	-	P	-	Blue-Blue	Black	Kn	-	097-0036-16	-	-	-	S	-	12	006-0937-12A	004-0139-12	-	EN3155-018M1212	P	-	Yellow-Yellow	-	-	standard	006-0912-12A	004-0140-12	-	EN3155-019F1212	S	-	12	006-1157-12A	109028A	-	-	P	-	Blue-Yellow	-	-	reduced	006-1159-12A	109029A	-	-	S	-																																																															
20	006-1188-20	0641-15-2000	-	-	P	-	Red-Red + white dot	Black	Kn	standard																																																																																																																																																																																																																																																																											
	006-1189-20	0603-15-2000A	-	-	S	-					20	025-0404-20	-	-	-	P	-	Purple-Red	Yellow	Kp	enlarged	025-0405-20	-	-	-	S	-	20	025-0402-20	-	-	-	P	-	Purple-Red	Black	Kn	enlarged	025-0403-20	-	-	-	S	-	16	006-0937-16A	004-0139-16	-	EN3155-018M1616	P	-	Blue-Blue	-	-	standard	006-0912-16A	004-0140-16	-	EN3155-019F1616	S	-	16	006-1102-16A	004-0141-16	-	EN3155-018M1614	P	-	White-Blue	-	-	enlarged	006-1104-16A	004-0142-16	-	EN3155-019F1614	S	-	16	004-0160-16A	-	-	EN3155-018M1618	P	-	Brown-Blue	-	-	reduced	004-0159-16A	-	-	EN3155-019F1618	S	-	16	006-1168-16A	109026-16A	-	-	P	-	Red-Blue	-	-	reduced	006-1169-16A	109027-16A	-	-	S	-	16	025-0870-16A	-	-	-	P	-	White-Blue	-	-	reduced	025-0871-16A	-	-	-	S	-	16	006-0982-16	-	-	-	P	-	Blue-Blue	Yellow	Kp	-	097-0037-16	-	-	-	S	-	16	006-0983-16	-	-	-	P	-	Blue-Blue	Black	Kn	-	097-0036-16	-	-	-	S	-	12	006-0937-12A	004-0139-12	-	EN3155-018M1212	P	-	Yellow-Yellow	-	-	standard	006-0912-12A	004-0140-12	-	EN3155-019F1212	S	-	12	006-1157-12A	109028A	-	-	P	-	Blue-Yellow	-	-	reduced	006-1159-12A	109029A	-	-	S	-																																																																																
20	025-0404-20	-	-	-	P	-	Purple-Red	Yellow	Kp	enlarged																																																																																																																																																																																																																																																																											
	025-0405-20	-	-	-	S	-					20	025-0402-20	-	-	-	P	-	Purple-Red	Black	Kn	enlarged	025-0403-20	-	-	-	S	-	16	006-0937-16A	004-0139-16	-	EN3155-018M1616	P	-	Blue-Blue	-	-	standard	006-0912-16A	004-0140-16	-	EN3155-019F1616	S	-	16	006-1102-16A	004-0141-16	-	EN3155-018M1614	P	-	White-Blue	-	-	enlarged	006-1104-16A	004-0142-16	-	EN3155-019F1614	S	-	16	004-0160-16A	-	-	EN3155-018M1618	P	-	Brown-Blue	-	-	reduced	004-0159-16A	-	-	EN3155-019F1618	S	-	16	006-1168-16A	109026-16A	-	-	P	-	Red-Blue	-	-	reduced	006-1169-16A	109027-16A	-	-	S	-	16	025-0870-16A	-	-	-	P	-	White-Blue	-	-	reduced	025-0871-16A	-	-	-	S	-	16	006-0982-16	-	-	-	P	-	Blue-Blue	Yellow	Kp	-	097-0037-16	-	-	-	S	-	16	006-0983-16	-	-	-	P	-	Blue-Blue	Black	Kn	-	097-0036-16	-	-	-	S	-	12	006-0937-12A	004-0139-12	-	EN3155-018M1212	P	-	Yellow-Yellow	-	-	standard	006-0912-12A	004-0140-12	-	EN3155-019F1212	S	-	12	006-1157-12A	109028A	-	-	P	-	Blue-Yellow	-	-	reduced	006-1159-12A	109029A	-	-	S	-																																																																																																	
20	025-0402-20	-	-	-	P	-	Purple-Red	Black	Kn	enlarged																																																																																																																																																																																																																																																																											
	025-0403-20	-	-	-	S	-					16	006-0937-16A	004-0139-16	-	EN3155-018M1616	P	-	Blue-Blue	-	-	standard	006-0912-16A	004-0140-16	-	EN3155-019F1616	S	-	16	006-1102-16A	004-0141-16	-	EN3155-018M1614	P	-	White-Blue	-	-	enlarged	006-1104-16A	004-0142-16	-	EN3155-019F1614	S	-	16	004-0160-16A	-	-	EN3155-018M1618	P	-	Brown-Blue	-	-	reduced	004-0159-16A	-	-	EN3155-019F1618	S	-	16	006-1168-16A	109026-16A	-	-	P	-	Red-Blue	-	-	reduced	006-1169-16A	109027-16A	-	-	S	-	16	025-0870-16A	-	-	-	P	-	White-Blue	-	-	reduced	025-0871-16A	-	-	-	S	-	16	006-0982-16	-	-	-	P	-	Blue-Blue	Yellow	Kp	-	097-0037-16	-	-	-	S	-	16	006-0983-16	-	-	-	P	-	Blue-Blue	Black	Kn	-	097-0036-16	-	-	-	S	-	12	006-0937-12A	004-0139-12	-	EN3155-018M1212	P	-	Yellow-Yellow	-	-	standard	006-0912-12A	004-0140-12	-	EN3155-019F1212	S	-	12	006-1157-12A	109028A	-	-	P	-	Blue-Yellow	-	-	reduced	006-1159-12A	109029A	-	-	S	-																																																																																																																		
16	006-0937-16A	004-0139-16	-	EN3155-018M1616	P	-	Blue-Blue	-	-	standard																																																																																																																																																																																																																																																																											
	006-0912-16A	004-0140-16	-	EN3155-019F1616	S	-					16	006-1102-16A	004-0141-16	-	EN3155-018M1614	P	-	White-Blue	-	-	enlarged	006-1104-16A	004-0142-16	-	EN3155-019F1614	S	-	16	004-0160-16A	-	-	EN3155-018M1618	P	-	Brown-Blue	-	-	reduced	004-0159-16A	-	-	EN3155-019F1618	S	-	16	006-1168-16A	109026-16A	-	-	P	-	Red-Blue	-	-	reduced	006-1169-16A	109027-16A	-	-	S	-	16	025-0870-16A	-	-	-	P	-	White-Blue	-	-	reduced	025-0871-16A	-	-	-	S	-	16	006-0982-16	-	-	-	P	-	Blue-Blue	Yellow	Kp	-	097-0037-16	-	-	-	S	-	16	006-0983-16	-	-	-	P	-	Blue-Blue	Black	Kn	-	097-0036-16	-	-	-	S	-	12	006-0937-12A	004-0139-12	-	EN3155-018M1212	P	-	Yellow-Yellow	-	-	standard	006-0912-12A	004-0140-12	-	EN3155-019F1212	S	-	12	006-1157-12A	109028A	-	-	P	-	Blue-Yellow	-	-	reduced	006-1159-12A	109029A	-	-	S	-																																																																																																																																			
16	006-1102-16A	004-0141-16	-	EN3155-018M1614	P	-	White-Blue	-	-	enlarged																																																																																																																																																																																																																																																																											
	006-1104-16A	004-0142-16	-	EN3155-019F1614	S	-					16	004-0160-16A	-	-	EN3155-018M1618	P	-	Brown-Blue	-	-	reduced	004-0159-16A	-	-	EN3155-019F1618	S	-	16	006-1168-16A	109026-16A	-	-	P	-	Red-Blue	-	-	reduced	006-1169-16A	109027-16A	-	-	S	-	16	025-0870-16A	-	-	-	P	-	White-Blue	-	-	reduced	025-0871-16A	-	-	-	S	-	16	006-0982-16	-	-	-	P	-	Blue-Blue	Yellow	Kp	-	097-0037-16	-	-	-	S	-	16	006-0983-16	-	-	-	P	-	Blue-Blue	Black	Kn	-	097-0036-16	-	-	-	S	-	12	006-0937-12A	004-0139-12	-	EN3155-018M1212	P	-	Yellow-Yellow	-	-	standard	006-0912-12A	004-0140-12	-	EN3155-019F1212	S	-	12	006-1157-12A	109028A	-	-	P	-	Blue-Yellow	-	-	reduced	006-1159-12A	109029A	-	-	S	-																																																																																																																																																				
16	004-0160-16A	-	-	EN3155-018M1618	P	-	Brown-Blue	-	-	reduced																																																																																																																																																																																																																																																																											
	004-0159-16A	-	-	EN3155-019F1618	S	-					16	006-1168-16A	109026-16A	-	-	P	-	Red-Blue	-	-	reduced	006-1169-16A	109027-16A	-	-	S	-	16	025-0870-16A	-	-	-	P	-	White-Blue	-	-	reduced	025-0871-16A	-	-	-	S	-	16	006-0982-16	-	-	-	P	-	Blue-Blue	Yellow	Kp	-	097-0037-16	-	-	-	S	-	16	006-0983-16	-	-	-	P	-	Blue-Blue	Black	Kn	-	097-0036-16	-	-	-	S	-	12	006-0937-12A	004-0139-12	-	EN3155-018M1212	P	-	Yellow-Yellow	-	-	standard	006-0912-12A	004-0140-12	-	EN3155-019F1212	S	-	12	006-1157-12A	109028A	-	-	P	-	Blue-Yellow	-	-	reduced	006-1159-12A	109029A	-	-	S	-																																																																																																																																																																					
16	006-1168-16A	109026-16A	-	-	P	-	Red-Blue	-	-	reduced																																																																																																																																																																																																																																																																											
	006-1169-16A	109027-16A	-	-	S	-					16	025-0870-16A	-	-	-	P	-	White-Blue	-	-	reduced	025-0871-16A	-	-	-	S	-	16	006-0982-16	-	-	-	P	-	Blue-Blue	Yellow	Kp	-	097-0037-16	-	-	-	S	-	16	006-0983-16	-	-	-	P	-	Blue-Blue	Black	Kn	-	097-0036-16	-	-	-	S	-	12	006-0937-12A	004-0139-12	-	EN3155-018M1212	P	-	Yellow-Yellow	-	-	standard	006-0912-12A	004-0140-12	-	EN3155-019F1212	S	-	12	006-1157-12A	109028A	-	-	P	-	Blue-Yellow	-	-	reduced	006-1159-12A	109029A	-	-	S	-																																																																																																																																																																																						
16	025-0870-16A	-	-	-	P	-	White-Blue	-	-	reduced																																																																																																																																																																																																																																																																											
	025-0871-16A	-	-	-	S	-					16	006-0982-16	-	-	-	P	-	Blue-Blue	Yellow	Kp	-	097-0037-16	-	-	-	S	-	16	006-0983-16	-	-	-	P	-	Blue-Blue	Black	Kn	-	097-0036-16	-	-	-	S	-	12	006-0937-12A	004-0139-12	-	EN3155-018M1212	P	-	Yellow-Yellow	-	-	standard	006-0912-12A	004-0140-12	-	EN3155-019F1212	S	-	12	006-1157-12A	109028A	-	-	P	-	Blue-Yellow	-	-	reduced	006-1159-12A	109029A	-	-	S	-																																																																																																																																																																																																							
16	006-0982-16	-	-	-	P	-	Blue-Blue	Yellow	Kp	-																																																																																																																																																																																																																																																																											
	097-0037-16	-	-	-	S	-					16	006-0983-16	-	-	-	P	-	Blue-Blue	Black	Kn	-	097-0036-16	-	-	-	S	-	12	006-0937-12A	004-0139-12	-	EN3155-018M1212	P	-	Yellow-Yellow	-	-	standard	006-0912-12A	004-0140-12	-	EN3155-019F1212	S	-	12	006-1157-12A	109028A	-	-	P	-	Blue-Yellow	-	-	reduced	006-1159-12A	109029A	-	-	S	-																																																																																																																																																																																																																								
16	006-0983-16	-	-	-	P	-	Blue-Blue	Black	Kn	-																																																																																																																																																																																																																																																																											
	097-0036-16	-	-	-	S	-					12	006-0937-12A	004-0139-12	-	EN3155-018M1212	P	-	Yellow-Yellow	-	-	standard	006-0912-12A	004-0140-12	-	EN3155-019F1212	S	-	12	006-1157-12A	109028A	-	-	P	-	Blue-Yellow	-	-	reduced	006-1159-12A	109029A	-	-	S	-																																																																																																																																																																																																																																									
12	006-0937-12A	004-0139-12	-	EN3155-018M1212	P	-	Yellow-Yellow	-	-	standard																																																																																																																																																																																																																																																																											
	006-0912-12A	004-0140-12	-	EN3155-019F1212	S	-					12	006-1157-12A	109028A	-	-	P	-	Blue-Yellow	-	-	reduced	006-1159-12A	109029A	-	-	S	-																																																																																																																																																																																																																																																										
12	006-1157-12A	109028A	-	-	P	-	Blue-Yellow	-	-	reduced																																																																																																																																																																																																																																																																											
	006-1159-12A	109029A	-	-	S	-																																																																																																																																																																																																																																																																															



# 983 (200 °C) Series Contacts

## EN2997 (200 °C)

### Power

Kit contact (contacts + sleeve)			Decomposition of the kit		Color Bands
Commercial P/N	Type	Wire size AWG	Contact P/N	Sleeve	
182-0672-06A	P	6	182-0657-06A	182-0601-06	Green-Green
182-0704-06	S		182-0700-06		
182-0672-08A	P	8	182-0661-06A	182-0601-08	Green-Red
182-0704-08	S		182-0701-06		
182-0672-10A	P	10	182-0664-06A	182-0601-10	Green-Brown
182-0704-10	S		182-0702-06		



# 983 (260 °C) Series Contacts

## EN2997 (260 °C)

Active area / Mating Size	Part No.	Former Syst. Part No.	MIL Ref.	EN Ref.	Type	Color Bands		Marking yellow or black	Contact Material	Barrel
						AS39029	EN3155			
20	097-0015-20	45045 A	-	EN3155-004M2020	P	-	Red-Red	-	-	standard
	097-0016-20	45109 A	-	EN3155-005F2020	S	-	White dot	-	-	standard
20	097-0047-20	47815 A	-	-	P	-	Green-Red	-	-	reduced
	097-0053-20	47816 A	-	-	S	-	White dot	-	-	reduced
20	006-1186-20	006-1131-20 006-0982-20	-	-	P	-	Red-Red	Yellow	Kp	standard
	006-1187-20	006-1134-20 006-0985-20	-	-	S	-	White dot	-	-	standard
20	006-1188-20	097-0173-20 006-0983-20	-	-	P	-	Red-Red	Black	Kn	standard
	006-1189-20	097-0036-20 006-0984-20	-	-	S	-	White dot	-	-	standard
20	025-0402-20	-	-	-	P	-	Purple-Red	Black	Kn	enlarged
	025-0403-20	-	-	-	S	-	-	-	-	enlarged
20	025-0404-20	-	-	-	P	-	Purple-Red	Yellow	Kp	enlarged
	025-0405-20	-	-	-	S	-	-	-	-	enlarged
16	097-0014-16	-	-	EN3155-004M1616	P	-	Blue-Blue	-	-	standard
	097-0013-16	-	-	EN3155-005F1616	S	-	White dot	-	-	standard
16	097-0177-16	-	-	EN3155-004M1614	P	-	Blue-Blue	-	-	enlarged
	097-0178-16	-	-	EN3155-005F1614	S	-	White dot	-	-	enlarged
16	006-0982-16	-	-	-	P	-	-	-	Kp	standard
	097-0037-16	-	-	-	S	-	-	-	-	standard
16	006-0983-16	097-0173-16	-	-	P	-	-	-	Kn	standard
	097-0036-16	097-0175-16	-	-	S	-	-	-	-	standard
12	097-0165-12	-	-	EN3155-004M1212	P	-	Yellow-Yellow	-	-	standard
	097-0166-12	-	-	EN3155-005F1212	S	-	-	-	-	standard



# 991/992 Series Contacts

Active area / Mating Size	Part No.	Former Syst. Part No.	MIL Ref.	EN Ref.	Type	Color Bands		Marking yellow or black	Contact Material	Barrel
						AS39029	EN3155			
16	097-0006-16	60530A	-	-	P	Red-Brown-Red	-	-	-	standard
	097-0010-16	60531A			S	Red-Brown-Purple				
	097-0004-16	60534A			S	Red-Brown-Grey				
16	097-0007-16	60536A	-	-	P	-	Blue	-	-	standard
	097-0011-16	65906A			S					
	097-0005-16	65908A			S					
16	097-0028-16	61994A	-	-	P	-	Blue	-	9C	standard
	097-0027-16	61989A			P				9A	
	097-0026-16	61997A			S				9C	
	097-0025-16	61992A			S				9A	
16	097-0034-16	65184A	-	-	P	-	Red-Blue	-	-	reduced
	097-0033-16	65185A			S					
	097-0032-16	65186A			S					
16	097-0091-16	66124A	-	-	P	-	Red-Blue	-	9A	reduced
	097-0093-16	66125A			S			-		
	097-0096-16	66127A			S			Black		
16	097-0092-16	66129A	-	-	P	-	Red-Blue	-	9C	reduced
	097-0097-16	66130A			S			Yellow		
	097-0095-16	66132A			S			-		
16	097-0027-16	61989A	-	-	P	-	Blue	-	9A	standard
	097-0023-16	61990A			S					
	097-0025-16	61992A			S					
16	097-0028-16	61994A	-	-	P	-	Blue	-	9C	standard
	097-0024-16	61995A			S					
	097-0026-16	61997A			S					
12	097-0060-12	60549A	-	-	P	Red-Brown-Orange	-	-	-	standard
	097-0061-12	60550A			S	Red-Brown-White				
8	097-0184-08	60363	-	-	P	Red-Brown-Yellow	-	-	-	standard
	097-0187-08	60364			S	Red-Red-Black				
4	097-0062-04	60615	-	-	P	Red-Brown-Green	-	-	-	standard
	097-0063-04	60616			S	Red-Red-Brown				
0	097-0064-00	60619	-	-	P	Red-Brown-Blue	-	-	-	standard
	097-0065-00	60620			S	Red-Red-Red				



# DBAS Series Contacts

Active area / Mating Size	Part No.	Former Syst. Part No.	MIL Ref.	EN Ref.	Type	Color Bands		Marking yellow or black	Contact Material	Barrel
						AS39029	EN3155			
22	028-0108-22 028-0113-22	-	-	-	P S	-	Green	-	-	standard
22	030-0076-22 030-0044-22	-	-	-	P S	-	White-Green specific band: white	-	-	reduced
22	028-0131-22 028-0139-22	-	-	-	P S	-	Green-Green *-Green	Yellow	Kp	standard
22	028-0132-22 028-0140-22	-	-	-	P S	-	Green-Green *-Green	Black	Kn	standard
22	703-0162-22 703-0163-22	-	-	-	P S	-	*-Green	Yellow	-	reduced
22	703-0164-22 703-0165-22	-	-	-	P S	-	*-Green	Black	-	reduced
20	006-0937-20 006-0912-20	0641-10-2059B 0603-34-2059B	-	-	P S	-	Red	-	-	standard
20	006-0044-20 006-0055-20	DF 06-044-20B DF 06-055-20B	-	-	P S	-	Brown-Red	-	-	enlarged
20	006-0972-20 006-0973-20	0641-24-2059B 0603-21-2059B	-	-	P S	-	Black-Red	-	-	enlarged
20	006-1186-20 006-1187-20	0641-14-2001 0603-16-2001	-	-	P S	-	Red-Red White dot	Yellow	Kp	standard
20	006-1188-20 006-1189-20	0641-15-2001 0603-15-2001	-	-	P S	-	Red-Red White dot	Black	Kn	standard
20	006-1060-20 006-1062-20	-	-	-	P S	-	-	-	Co	standard
20	025-0404-20 025-0405-20	-	-	-	P S	-	Purple-Red	Yellow	Kp	enlarged
20	025-0402-20 025-0403-20	-	-	-	P S	-	Purple-Red	Black	Kn	enlarged
20	025-0406-20 025-0407-20	-	-	-	P S	-	Purple-Red	-	Co	enlarged
16	006-0937-16 006-0912-16	0641-12-1659B 0603-33-1659B	-	-	P S	-	Blue	-	-	standard
16	006-1102-16 006-1104-16	-	-	-	P S	-	White-Blue specific band: white	-	-	enlarged
16	004-0160-16 004-0159-16	-	-	-	P S	-	Brown-Blue	-	-	reduced
16	006-1168-16 006-1169-16	-	-	-	P S	-	Red-Blue specific band: white	-	-	reduced
16	025-0870-16 025-0871-16	-	-	-	P S	-	White-Blue	-	-	reduced
12	006-0937-12 006-0912-12	0641-32-1259B 0603-32-1259B	-	-	P S	-	Yellow	-	-	standard
12	006-1157-12 006-1159-12	-	-	-	P S	-	White-Yellow	-	-	reduced
8	005-0893-08 005-0896-08	101333-59 101334-59	-	-	P S	-	-	-	-	standard
8 (87)	005-0257-08 005-0258-08	-	-	-	P S	-	Brown-Red	-	-	reduced
8 (88)	006-0041-08 006-0040-08	-	-	-	P S	-	Red	-	-	standard

\* No first band color



## DFA/910 Series Contacts

Active area / Mating Size	Part No.	Former Syst. Part No.	MIL Ref.	EN Ref.	Type	Color Bands		Marking yellow or black	Contact Material	Barrel
						AS39029	EN3155			
20	910 KP-20-0	008-0001-20	-	-	P	-				
	910 KS-20-0	008-0011-20	-	-	S	-	Purple-Red	-	-	enlarged
20	910 KP-20 R	-	-	-	P	-				
	910 KS-20 R	-	-	-	S	-	Grey-Red	-	-	reduced
20	008-0161-20	DF 08-161-20-0059B	-	-	P	-				
	008-0162-20	DF 08-162-20-0059B	-	-	S	-	White-Red	-	-	reduced
20	008-0100-20	DF 08-100-01	-	-	P	-				
	008-0101-20	DF 08-A-101-01	-	-	S	-	Red	Black White	Kn	-
20	008-0248-20	DF 08-100-02	-	-	P	-				
	008-0208-20	DF 08-A-101-02	-	-	S	-	Red-Red	Yellow	Kp	-
16	910 KP-16-0	DF 08-001-16	-	-	P	-				
	910 KS-16-0	DF 08-A-011-16	-	-	S	-	Blue	-	-	standard
16	910 KP-16 A	008-0265-16	-	-	P	-				
	910 KS-16 A	008-0266-16	-	-	S	-	Orange-Blue	-	-	enlarged
16	-	-	-	-	-	-				
	134-0068-16	-	-	-	S	-	Purple-Blue	-	-	reduced
16	-	-	-	-	-	-				
	008-0253-16	P 2161	-	-	S	-	Red-Blue specific band: white	-	-	reduced



## 951/DVG Series Contacts

Active area / Mating Size	Part No.	Former Syst. Part No.	Type	Color Bands		Marking yellow or black	Contact Material	Barrel
				AS39029	EN3155			
20	014-1025-20	4102-19-1156	P	-	-	-	-	soldered or crimping
	014-1026-20	4102-18-1156	S	-	-	-	-	
20	014-1015-20	0004-058-000	P	-	-	-	-	with cup
	014-1018-20	0007-008-000B	S	-	-	-	-	
20	014-1014-20	0004-135-000B	P	-	-	-	-	without cup
-	038-0015-20	0007-044-000B	S	-	-	-	-	.
20	014-0091-20	DF 14-091-20	P	-	-	-	-	long barrel without cup
	014-0092-20	DF 14-092-20	S	-	Red-Red	-	-	
20	143-0003-20	-	P	-	-	-	-	with cup
	143-0004-20	-	S	-	-	-	-	
16	014-1014-16	0004-065-000	P	-	-	-	-	-
	014-1016-16	0007-013-000	S	-	-	-	-	
16	014-1028-16	-	P	-	-	-	-	reduced
	014-1029-16	-	S	-	-	-	-	
16	143-0003-16	-	P	-	-	-	-	-
	143-0004-16	-	S	-	-	-	-	
16	DF 41-006-16	-	P	-	-	-	-	enlarged
	DF 41-A-009-16	-	S	-	-	-	-	
8	014-1092-08	?	P	-	-	-	-	crimping
	014-1094-08	?	S	-	-	-	-	
8	DF 41-053-08	9-053-2608	P	-	-	-	-	soldered
	DF 41-A-052-08	9-052-2608	S	-	-	-	-	





## DS/DCI/901/941 Series Contacts

Active area / Mating Size	Part No.	Former Syst. Part No.	Type	Color Bands		Marking yellow or black	Contact Material	Barrel
				AS39029	EN3155			
20	047-0894-20	0005-045-000B	P	-	-	-	-	standard
	047-0893-20	0007-049-000B	S	-	-	-	-	
20	047-1022-20	0005-056-000	P	-	-	-	-	reduced
	047-1023-20	0007-071-000B	S	-	-	-	-	
20	047-1024-20	0005-005-000	P	-	-	-	-	enlarged
	047-1025-20	0007-007-000B	S	-	-	-	-	
20	047-1006-20	4702-11-3901	P	-	-	-	Cu	-
	047-1059-20	4702-10-3901	S	-	-	-	-	
20	047-1007-20	4702-11-0102	P	-	-	-	Co	-
	047-1013-20	4702-10-0102	S	-	-	-	-	
20	047-1008-20	4702-11-0103	P	-	-	-	Coi	-
	047-1014-20	4702-10-0103	S	-	-	-	(constantan fer)	
20	047-1009-20	4702-11-3904	P	-	-	-	Fe	-
	047-1015-20	4702-10-3904	S	-	-	-	-	
20	047-1010-20	4702-11-0105	P	-	-	-	Kp	-
	047-1016-20	4702-10-0105	S	-	-	-	-	
20	047-1011-20	4702-11-0106	P	-	-	-	Kn	-
	047-1017-20	4702-10-0106	S	-	-	-	-	
16	047-0894-16	800-16/32-1	P	-	-	-	-	standard
	047-0893-16	200-16/30-3	S	-	-	-	-	
16	047-1022-16	800-16/32-3	P	-	-	-	-	reduced
	047-1023-16	200-16/30-4	S	-	-	-	-	
16	047-1024-16	0005-008-000	P	-	-	-	-	enlarged
	047-1025-16	0007-014-000	S	-	-	-	-	
16	047-1348-16	-	P	-	-	-	-	enlarged
	047-1349-16	-	S	-	-	-	-	
12	047-0894-12	800-12/32-1	P	-	-	-	-	standard
	047-0893-12	200-12/30-3	S	-	-	-	-	
12	047-1022-12	800-12/32-3	P	-	-	-	-	reduced
	047-1023-12	200-12/30-4	S	-	-	-	-	
12	047-1024-12	800-12/32-7	P	-	-	-	-	reduced
	047-1025-12	200-12/30-7	S	-	-	-	-	
-	-	-	-	-	-	-	-	enlarged
12	047-1401-12	-	S	-	-	-	-	enlarged
8	047-0894-08	0005-048-000	P	-	-	-	-	standard
	047-0893-08	0007-059-000	S	-	-	-	-	
8 (87)	047-1329-08	-	P	-	-	-	-	reduced
	047-1330-08	-	S	-	-	-	-	
8 (88)	047-1325-08	-	P	-	-	-	-	standard
	047-1326-08	-	S	-	-	-	-	
4	640-0778-04	-	P	-	-	-	-	enlarged
	640-0779-04	-	S	-	-	-	-	
4	640-0344-04	-	P	-	-	-	-	?
	640-0343-04	-	S	-	-	-	-	
0	640-0784-00	-	P	-	-	-	-	?
	092-1363-00	-	S	-	-	-	-	



## UR/RE/RM/RSM/RTK Series Contacts

Active area / Mating Size	Part No.	Former Syst. Part No.	Type	Color Bands		Marking yellow or black	Contact Material	Barrel
				AS39029	EN3155			
22	029-0100-22	2841-5-9000C	P	-	Green	-	-	standard
	029-0101-22	2803-4-0000C	S	-				
22	029-0102-22	DF 28-046-22C	P	-	White-Green	-	-	reduced
	029-0103-22	DF 28-A-047-22C	S	-				
22	028-0108-22	2841-5-9000D	P	-	Green	-	-	standard
	028-0113-22	2803-4-0000E	S	-				
22	030-0076-22	DF 28-046-22D	P	-	Green-White	-	-	reduced
	030-0044-22	DF 28-047-22E	S	-	White-Green			
22	028-0131-22	-	P	-	Green	Yellow	Kp	standard
	028-0139-22	-	S	-	Green-Green			
22	028-0132-22	-	P	-	Green-Green	Black	Kn	standard
	028-0140-22	-	S	-	Green			
22	703-0162-22	-	P	-	*-Green	Yellow	-	reduced
	703-0163-22	-	S	-				
22	703-0164-22	-	P	-	*-Green	Black	-	reduced
	703-0165-22	-	S	-				
20	028-0108-20	103-300-31	P	-	Red	-	-	standard
	028-0113-20	103-304	S	-				
16	028-0176-16	2841-7-9016	P	-	Blue	-	-	standard
	028-0174-16	2803-5-0016	S	-				

\* No first band color

## 904/944/DRA/DPM Series Contacts

Active area / Mating Size	Part No.	Former Syst. Part No.	MIL Ref.	EN Ref.	Type	Color Bands		Marking yellow or black	Contact Material	Barrel
						AS39029	EN3155			
16	023-0032-16	DF 23-A-032-16	-	-	P	-	-	-	-	standard
	023-0025-16	DF 23-A-025-16	-	-	S	-				
16	023-0040-16	DF 23-A-040-16	-	-	P	-	-	-	-	reduced
	023-0139-16	-	-	-	S	-				
16	023-0151-16	-	-	-	P	-	-	-	-	reduced
	023-0153-16	-	-	-	S	-				



## 902/942 Series Contacts

Active area / Mating Size	Part No.	Former Syst. Part No.	MIL Ref.	EN Ref.	Type	Color Bands		Marking yellow or black	Contact Material	Barrel
						AS39029	EN3155			
20	006-0937-20A	004-0139-20	-	EN3155-018M2020	P	-		-	-	standard
	006-0912-20A	004-0140-20	-	EN3155-019F2020	S	-	Red	-	-	standard
20	006-0044-20A	004-0141-20	-	EN3155-018M2018	P	-		-	-	enlarged
	006-0055-20A	004-0142-20	-	EN3155-018F2018	S	-	Brown-Red	-	-	enlarged
20	006-0972-20A	0641-24-2059C	-	-	P	-		-	-	reduced
	006-0973-20A	0603-21-2059C	-	-	S	-	Black-Red	-	-	reduced
20	006-1186-20	006-1131-20A	-	-	P	-		-	-	standard
	006-1187-20	006-1134-20A	-	-	S	-	Red-Red + white dot	Yellow	Kp	standard
20	006-1188-20	0641-15-2000	-	-	P	-		-	-	standard
	006-1189-20	0603-15-2000A	-	-	S	-	Red-Red + white dot	Black	Kn	standard
20	006-1131-20	0641-14-2001	-	-	P	-		-	Kp	-
	006-1134-20	0603-16-2001	-	-	S	-	Black	-	-	-
20	006-1132-20	0641-15-2001	-	-	P	-		-	-	-
	006-1133-20	0603-15-2001	-	-	S	-	Orange	-	Kn	-
20	006-1060-20	-	-	-	P	-		-	Co	enlarged
	006-1062-20	-	-	-	S	-	-	-	-	enlarged
20	025-0404-20	-	-	-	P	-	Purple-Red	Yellow	Kp	enlarged
	025-0405-20	-	-	-	S	-	Purple-Red	-	-	enlarged
20	025-0402-20	-	-	-	P	-	Purple-Red	Black	Kn	enlarged
	025-0403-20	-	-	-	S	-	Purple-Red	-	-	enlarged
20	025-0406-20	-	-	-	P	-		-	Co	enlarged
	025-0407-20	-	-	-	S	-	Purple-Red	-	-	enlarged



# Databus Contacts

## DMC-M Series Contacts and Tooling EN4165

Active area / Mating Size	Part No.	Former Syst. Part No.	MIL Ref.	EN Ref.	Type	Color Bands		Marking yellow or black	Contact Material	Barrel
						AS39029	EN3155			
Microcoax	724-0004-16	-	-	-	P	Yellow-Red-Yellow		-	-	-
	724-0005-16	-	-	-	S	Yellow-Orange-Red		-	-	-
08 (Coax)	182-0125-08	-	-	-	P	-	-	-	-	-
	182-0126-08	-	-	-	S	-	-	-	-	-
08	182-0048-08	-	-	-	P	-	-	-	-	-
	182-0044-08	-	-	-	S	-	-	-	-	-

Cable Type	Part No.	Type	Color Bands	Conductor Size, Max.	Braid OD, Max.
Single Braid	182-0034-03	P	Brown-Red	2 x 0.34 mm <sup>2</sup>	3.48
	182-0035-03	S			
Double Braid	182-0034-04	P	Red-Red	2 x 0.34 mm <sup>2</sup>	3.91
	182-0035-04	S			

### Quadrax size 8 (crimp)

Part No.	Type	Contact tooling		Sleeve tooling	
		Crimp tool	Positioner	Crimp tool	Die set
187-0204-08 A	P	M22520/2-01	K709	M22520/5-01	M22520/5-45B
187-0205-08 A	S				

Both P/Ns are also available without sealing sleeve (P/Ns are 187-0204-08 and 187-0205-08).  
Wiring NC187-0204-08 and NC187-0205-08.

### Quadrax size 8 (PCB)

Part No.	Type	Mounting type
187-0206-08	P	Back mounting



# Databus Contacts

## DG/DTS/MIL-DTL 38999

### Coax

P/N	Former P/N	Type	Size	Cable	Crimping of the inner contact		Crimping of the sleeve		Insertion/extraction tool
					Crimping tool	Positioner	Crimping tool	Positioner	
724-0004-16	-	P	8	RG 174 / 316 / 179	M22520/2-01	M22520/2-35	M22520/4-01	M22520/4-02	M15570-16 006-0902-16
724-0005-16	-	S			-	-	-	-	

### Triax

Databus Contacts (twisted Pair) As Per AS39029						Tooling for Databus Contacts			
Cable Type	Part No.	Type	Color Bands	Conductor Size Max.	Braid OD Max.	Sleeve Type	Center Conductor	Ferrule	Insertion/Extraction Tool
Single braid	182-0347-01	P	Brown-Red	2 x 0.34 mm <sup>2</sup>	3.48	Thermoplastic and silicone	TDB-CT-08	TDB-CT-HEX Mark D	114-008 or M81969/14-06
	182-0346-01	S							
Double braid	182-0347-02	P	Red-Red	2 x 0.34 mm <sup>2</sup>	3.91	Thermoplastic and silicone	TDB-CT-08	TDB-CT-HEX Mark D	114-008 or M81969/14-06
	182-0346-02	S							

### Quadrax size 8 (crimp)

Part No.	Type	Contact tooling		Sleeve tooling	
		Crimp tool	Positioner	Crimp tool	Die set
187-0204-08 A	P	M22520/2-01	K709	M22520/5-01	M22520/5-45B
187-0205-08 A	S				

Both P/Ns are also available without sealing sleeve (P/Ns are 187-0204-08 and 187-0205-08). Wiring NC187-0204-08 and NC187-0205-08.

### Quadrax size 8 (PCB)

Part No.	Type	Mounting type
187-0206-08	P	Back mounting



# Databus Contacts

## FDBA/AFD/DFE Series Contacts and Tooling / EN3646

### Quadrax

P/N	Type	Size	EN	Tools	
				For the inner contacts	For the body
187-0108-08	P	8	EN3155-072M08	M22520/2-01 + K709	M22520/5-01 + M22520/5-45B
187-0109-08	S	8	EN3155-073F08		

### Coax

Crimping								
P/N	Type	Size	Cable	Contact	Crimping tool	Positioner	Selector position	Insertion/extraction tool
025-0847-08	P	16	RG 196 A/U and	Inner	M22520/2-01	L22520-C3	5	M15570
025-0848-08	S		RG 178 B/U	Outer	M22520/1-01	M22520/1-02	7	

### Quadrax size 8 (PCB)

Part No.	Type	Mounting type
182-0121-01	P	Front mounting without grounding tail
182-0121-06		
182-0121-21		
182-0121-26		
187-0136-08	S	Back mounting

### Twinax size 8 (PCB)

Part No.	Type	Mounting type
187-0264-01	P	Front mounting
187-0264-06		
187-0265-01	S	Back mounting
187-0265-06		



# Databus Contacts

## DBAS Series Contacts

### Micro coax size 16



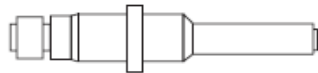
Female Contact



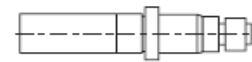
Male Contact

Contacts				Crimping		Tools
Coax wire used	Part number	Type	Contact	Crimping tool	Positioner	Wired contacts insertion/extraction tools
RG 196 A/U RG 178 B/U	025-0847-00	P	Inner Outer	057-0463-12 057-0461-11	057-0462-21	057-0517-32 006-0902-16
RG 196 A/U RG 178 B/U	025-0848-00	S	Inner Outer	057-0463-12 057-0461-11	057-0462-21	057-0517-32 006-0902-16

### Micro coax size 12



Male Contact



Female Contact

Coax wire used	Part number P	Part number S	Crimping tool	Positioner	Sleeve crimping tool	Insertion/extraction tool
Shielded 24	006-1082-00	006-1080-00	057-0463-12	057-0524-32	057-0520-05	006-0902-12
RG 180 B RG 195 A	006-1089-00	006-1091-00	057-0463-12	057-0524-32	057-0520-05	006-0902-12
Shielded 24 RG 174 RG 188 A	006-1092-00	006-1093-00	057-0463-12	057-0524-32	057-0520-05	006-0902-12
Shielded 28-30 RG 178 B	006-1094-00	006-1095-00	057-0463-12	057-0524-32	057-0520-05	006-0902-12
RG 187 A RG 196 A	006-1097-00	006-1096-00	057-0463-12	057-0524-32	057-0520-05	006-0902-12
F 1703-66	006-1183-00	006-1184-00	057-0463-12	057-0524-32	057-0520-05	006-0902-12

### Size 6 bifilar

Tools				
Com. part number	Type	For size 24 contacts	For contact body	Extraction tool
182-0611-08	P	M22520/2-01 + K709	M22520/5-01	025-0711-06
182-0612-08	S		M22520/5-45B	
182-0611-08	P	M22520/2-01 + K709	M22520/5-01	025-0711-06
182-0612-08	S		M22520/5-45B	
182-0611-08	P	M22520/2-01 + K709	M22520/5-01	025-0711-06
182-0612-08	S		M22520/5-45B	



# Databus Contacts

## DS/DCI/901/941 Series Contacts and Tooling

Coax size 8

Active area / Mating Size	Part No.	Former Syst. Part No.	Type	Cable	Indice
20	047-0894-00	0106-003-000	P	RG 174 U RG 178 B/U RG 187 A/U RG 188 A/U RG 196 A/U	standard
	047-0893-00	0107-003-000	S		
20	047-1026-00	800/33-1	P	RG 180 B/U RG 195 A/U	1
	047-1027-00	800/34-1	S		
20	047-1026-02	0106-001-000	P	RG 58 C/U RG 141 A/U RG 142 B/U RG 222 U	5
	047-1025-20	0107-001-000	S		
20	047-1026-01	DF 47-A-724-08-0056	P	50 PPTDE	F1
	047-1027-01	DF 47-A-724-08-0056	S		
20	047-1026-03	DF 47-A-863-08-0056	P	KX2	F5
	047-1027-03	DF 47-A-864-08-0056	S		
20	047-1026-04	DF 47-A-083-00	P	50 PPTDE KX23	F6
	047-1027-04	DF 47-A-085-00	S		
20	047-1026-05	DF 47-A-099-00	P	-	F7
	047-1027-05	DF 47-A-100-00	S		
20	047-1026-06	DF 47-A-284-00	P	RG 122 U	F9
	047-1027-06	DF 47-A-285-00	S		
20	047-1026-07	DF 47-A-287-00	P	-	F10
	047-1027-07	DF 47-A-288-00	S		
16	047-1026-08	DF 47-A-199-00	P	CT 115	F11
	047-1027-08	DF 47-A-203-00	S		
16	047-1026-09	-	P	Special	12
	047-1027-09	-	S		
16	047-1026-10	-	P	Special	9
	047-1027-10	-	S		
16	047-1056-00	-	P	KX 53 A/S, RG59, KX 6 A/S, 75 PPN A/S	T2
	047-1057-00	-	S		
12	047-1056-01	-	P	RG179, RG187	T1
	047-1057-01	-	S		
12	047-1056-02	-	P	RG316, RG180	T3
	047-1057-02	-	S		
12	047-1056-03	-	P	KX 53 A/S, RG59, KX 6 A/S, 75 PPN A/S	?
	047-1057-03	-	S		





## LET'S CONNECT

We make it easy to connect with our experts and are ready to provide all the support you need. Just call your local support number or visit [www.te.com/industrial](http://www.te.com/industrial) to chat with a Product Information Specialist.

## Technical Support

[te.com/support-center](http://te.com/support-center)

North America	+1 800 522 6752	Asia Pacific	+86 400 820 6015
North America (Toll)	+1 717 986 7777	Japan	044 844 8180
EMEA/South Africa	+800 0440 5100	Australia	+61 2 9554 2695
EMEA (Toll)	+31 73 624 6999	New Zealand	+64 (0) 9 634 4580
India (Toll-Free)	+800 440 5100		

[te.com/vanityurl](http://te.com/vanityurl)

DEUTSCH, AMP, AGASTAT, CII, HARTMAN, KILOVAC, MICRODOT, NANONICS, POLAMCO, Raychem, Rochester, SEACON Phoenix, SEACON, TE, TE Connectivity and the TE connectivity (logo) are trademarks of the TE Connectivity Ltd. family of companies. Other products, logos, and company names mentioned herein may be trademarks of their respective owners.

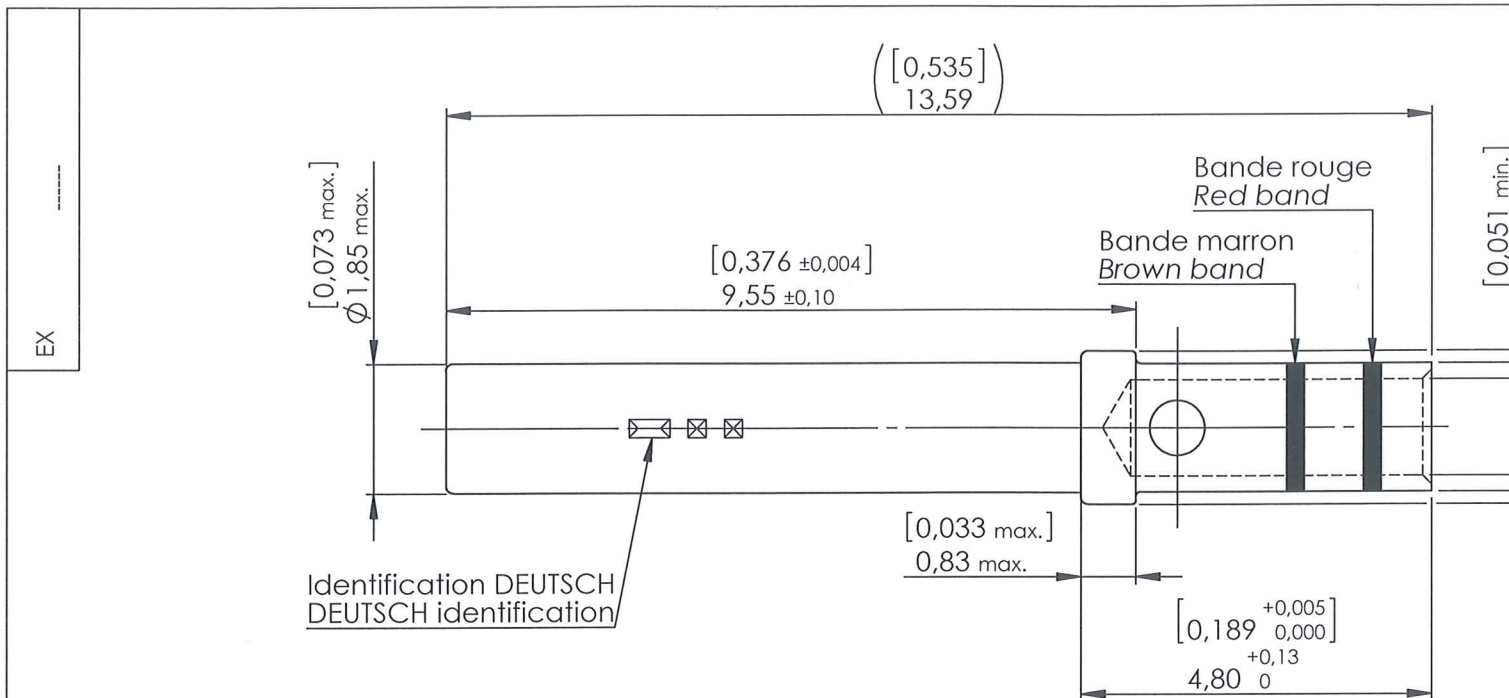
While TE has made every reasonable effort to ensure the accuracy of the information herein, nothing herein constitutes any guarantee that such information is error-free, or any other representation, warranty or guarantee that the information is accurate, correct, reliable or current. The TE entity issuing this publication reserves the right to make any adjustments to the information contained herein at any time without notice. All implied warranties regarding the information contained herein, including, but not limited to, any implied warranties of merchantability or fitness for a particular purpose are expressly disclaimed. The dimensions herein are for reference purposes only and are subject to change without notice. Specifications are subject to change without notice.

Consult TE for the latest dimensions and design specifications.

© 2018 TE Connectivity Ltd. family of companies All Rights Reserved.

0-0000000-0 02/18 Original

ORIGINAL EN ROUGE



Matière : Alliage de cuivre  
 Material : Copper alloy  
 Revêtement : Dorure Epaisseur : 1,27 µm min.  
 Plating : Gold Thickness : 50 µm min.

Outil d'insertion / extraction : M81969/39-01  
 Insertion / extraction tool : M81969/39-01

Pince à sertir : M22520/2-01 Positionneur : M22520/2-08  
 Crimping tool : M22520/2-01 Positionner : M22520/2-08

Masse / Mass : 0,17 g max.

Dimensions en mm / [Dimensions en inch]  
 Dimensions in mm / [Dimensions in inch]

f	05/12/14	OE041214	SERIE	SUB D	DATE	22-02-01	VISA Creation Created
e	16.11.07	OE331107					
Revision	Date	Observations	DESIGNATION				REF :
ORIGINE :			S/E CONTACT S FENDU #20 #20 ASSEMBLY SOCKET CONTACT				P/N:



Connecteurs Electriques Deutsch

17, rue LAVOISIER - BP 117 - 27091 EVREUX CEDEX 9 - FRANCE

FICHE TECHNIQUE  
 TECHNICAL DATA SHEET

18

## X-ON Electronics

Largest Supplier of Electrical and Electronic Components

*Click to view similar products for [TE Connectivity](#) manufacturer:*

Other Similar products are found below :

[D38999/24FJ4AN](#) [570416-000](#) [CLTEQ-M81CE-SSRELAY-4-20V](#) [4-1195131-0](#) [650069-000](#) [SMD100-2](#) [358838-000](#) [CB-1022B-78](#)  
[RM707012](#) [RP410012](#) [MMS42](#) [1-640426-8](#) [2EDL4CM](#) [DTS20W19-11PD-3028-LC](#) [RM202615](#) [NC6-P104-06](#) [MSPS103B](#) [DTS26F21-](#)  
[41HE-LC](#) [DTS26F21-41AE](#) [DTS26F21-41PE-LC](#) [DTS26F21-11SE-3028-LC](#) [30DCB6](#) [1932144-1](#) [293545-4](#) [LVR125S](#) [MS27466T25F4PB](#)  
[CKB-38-78010](#) [TR04AI-TINELLOCKRING](#) [1206SFF150F/63-2](#) [D38999/20JB35HA](#) [TE1500A2R2J](#) [D38999/20WC8BB](#) [DTS24F19-11SC-](#)  
[3028-LC](#) [D38999/24WG11HA](#) [D38999/24WG11HN](#) [MS27467T21F11H](#) [DJT16E21-11HA](#) [MS27467T21F35J](#) [MS27467T21F11J](#)  
[MS27467T21F16H-LC](#) [MS27467T21F35H](#) [MS27467T21F41H-LC](#) [1206SFH150F/24-2](#) [RP330024](#) [DJT16E21-11PA-LC](#) [DJT16E21-11HA-](#)  
[LC](#) [DJT16E21-11AA](#) [MS27467T21B11JA](#) [DJT16E21-11JA](#) [MS27467T21B11JA-LC](#)