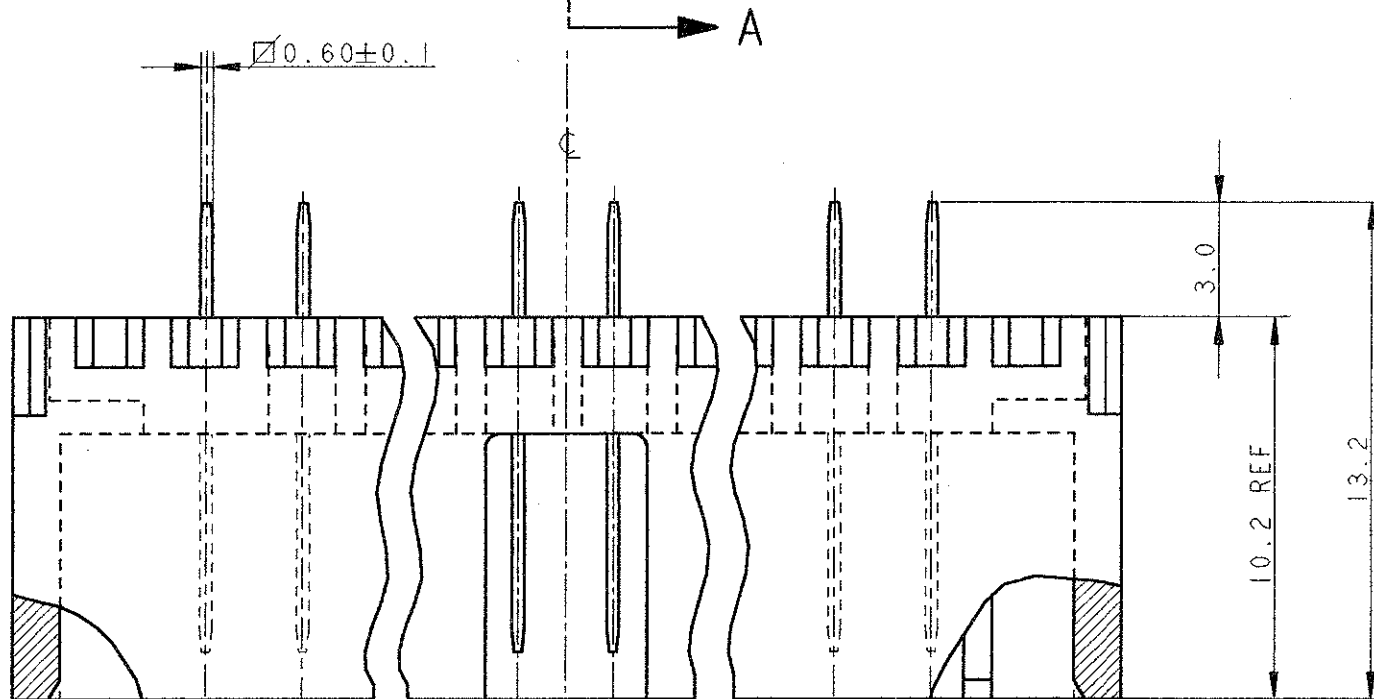
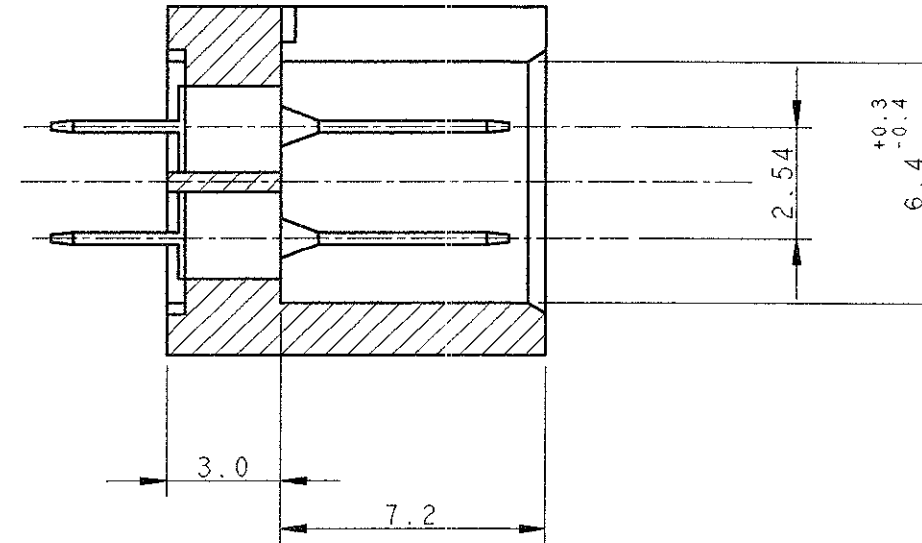
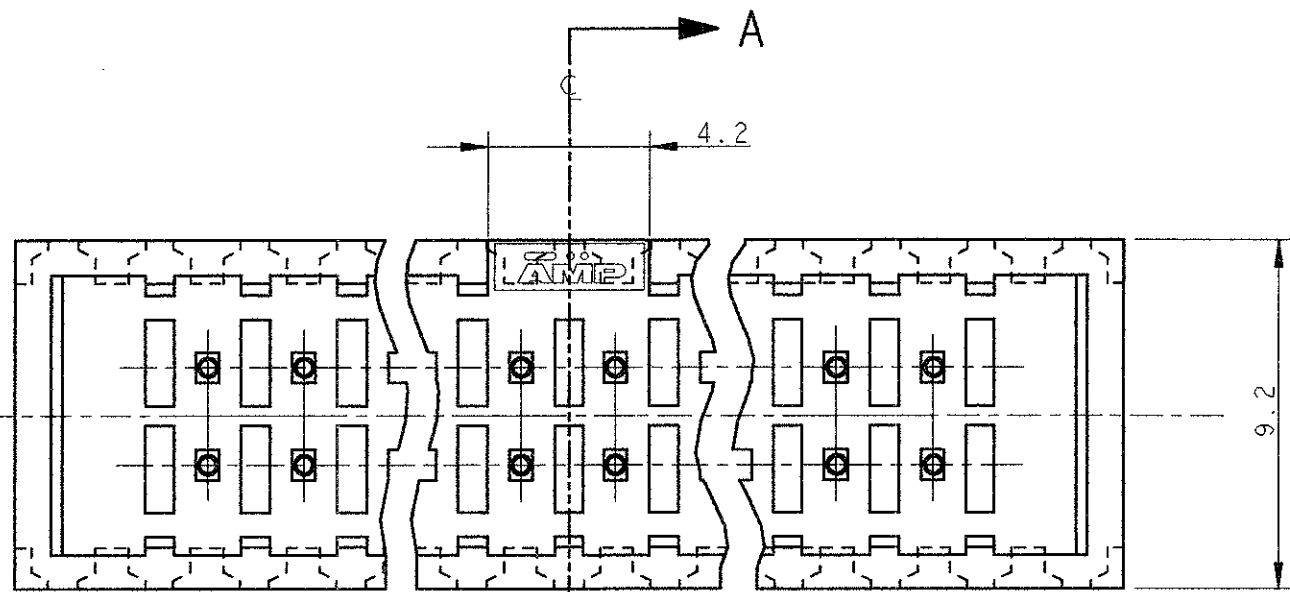


P	LTR	DESCRIPTION	DATE	DWN	APVD
	T	REVISED, EC ET00-0263-99	06 SEP 99		

SECTION A-A



QUESTO CONNETTORE E' APPROVATO E CERTIFICATO
 (THIS CONNECTOR IS APPROVED AND CERTIFIED)

$\triangle 10$ 2.54±0.1
PASSO (PITCH)

$\triangle 10$ "A"

"B"

"C"

<small>THIS DRAWING IS A CONTROLLED DOCUMENT FOR AMP INCORPORATED. IT IS SUBJECT TO CHANGE AND THE CONTROLLING ENGINEERING ORGANIZATION SHOULD BE CONTACTED FOR THE LATEST REVISION.</small>		DWN R. FABRIZIO CHK C. TARTAGLIA APVD 21 JUL 99	AMP AMP Italia S.p.A. C.so F.lli Cervi 15 Collegno (TO)
DIMENSIONS: mm	TOLERANCES UNLESS OTHERWISE SPECIFIED: ±0.3	PRODUCT SPEC 108-20038	NAME AMP-LATCH POST SUPPORT ASS'Y STRAIGHT LOW PROFILE
	0 PLC ± 1 PLC ± 2 PLC ± 3 PLC ± 4 PLC ± ANGLES ±2°	APPLICATION SPEC -	SIZE A3
MATERIAL $\triangle 1 \triangle 2 \triangle 3 \triangle 4$	FINISH $\triangle 5 \triangle 6 \triangle 7$	WEIGHT -	CAGE CODE 00779
CUSTOMER DRAWING		DRAWING NO ©=281271	SCALE 5:1 SHEET 1 OF 2 REV T

LOC	DIST	REVISIONS					
		P	LTR	DESCRIPTION	DATE	DWN	APVD
		-		SEE SHEET 1 OF 2			

POS.	N° VIE	AMP P/N	REV.	DIM. 'A'	DIM. 'B'	DIM. 'C'
10	5x2	1-281271-1	S	10.16	17.78	20.32
14	7x2	1-281272-1	S	15.24	22.86	25.40
16	8x2	1-281273-1	S	17.78	25.40	27.94
20	10x2	1-281274-1	S	22.86	30.48	33.02
26	13x2	1-281275-1	S	30.48	38.10	40.64
34	17x2	1-281276-1	S	40.64	48.26	50.80
40	20x2	1-281277-1	S	48.26	55.88	58.42
50	25x2	1-281278-1	S	60.96	68.58	71.12

POS.	N° VIE	AMP P/N	REV.	DIM. 'A'	DIM. 'B'	DIM. 'C'
10	5x2	281271-5	S	10.16	17.78	20.32
14	7x2	281272-5	S	15.24	22.86	25.40
16	8x2	281273-5	S	17.78	25.40	27.94
20	10x2	281274-5	S	22.86	30.48	33.02
26	13x2	281275-5	S	30.48	38.10	40.64
34	17x2	281276-5	S	40.64	48.26	50.80
40	20x2	281277-5	S	48.26	55.88	58.42
50	25x2	281278-5	S	60.96	68.58	71.12
60	30x2	281836-5	S	73.66	81.28	83.82

POS.	N° VIE	AMP P/N	REV.	DIM. 'A'	DIM. 'B'	DIM. 'C'
10	5x2	281271-3	S	10.16	17.78	20.32
14	7x2	281272-3	S	15.24	22.86	25.40
16	8x2	281273-3	S	17.78	25.40	27.94
20	10x2	281274-3	S	22.86	30.48	33.02
26	13x2	281275-3	S	30.48	38.10	40.64
34	17x2	281276-3	S	40.64	48.26	50.80
40	20x2	281277-3	S	48.26	55.88	58.42
50	25x2	281278-3	S	60.96	68.58	71.12
60	30x2	281836-3	S	73.66	81.28	83.82

POS.	N° VIE	AMP P/N	REV.	DIM. 'A'	DIM. 'B'	DIM. 'C'
10	5x2	281271-2	S	10.16	17.78	20.32
14	7x2	281272-2	S	15.24	22.86	25.40
16	8x2	281273-2	S	17.78	25.40	27.94
20	10x2	281274-2	S	22.86	30.48	33.02
26	13x2	281275-2	S	30.48	38.10	40.64
34	17x2	281276-2	S	40.64	48.26	50.80
40	20x2	281277-2	S	48.26	55.88	58.42
50	25x2	281278-2	S	60.96	68.58	71.12
60	30x2	281836-2	S	73.66	81.28	83.82

POS.	N° VIE	AMP P/N	REV.	DIM. 'A'	DIM. 'B'	DIM. 'C'
10	5x2	281271-1	S	10.16	17.78	20.32
14	7x2	281272-1	S	15.24	22.86	25.40
16	8x2	281273-1	S	17.78	25.40	27.94
20	10x2	281274-1	S	22.86	30.48	33.02
26	13x2	281275-1	S	30.48	38.10	40.64
34	17x2	281276-1	S	40.64	48.26	50.80
40	20x2	281277-1	S	48.26	55.88	58.42
50	25x2	281278-1	S	60.96	68.58	71.12
60	30x2	281836-1	S	73.66	81.28	83.82

- ① MATERIALE BLOCCHETTO: P.B.T. CARICATO VETRO, COLORE NERO
(HOUSING MATERIAL: P.B.T. G.F. FILLED, BLACK COLOUR)
- ② MATERIALE BLOCCHETTO: P.B.T. CARICATO VETRO, COLORE GRIGIO
(HOUSING MATERIAL: P.B.T. G.F. FILLED, GRAY COLOUR)
- ③ MATERIALE BLOCCHETTO: RYTON, COLORE MARRONE
(HOUSING MATERIAL: RYTON, BROWN COLOUR)
- ④ MATERIALE CONTATTO: OTTONE
(CONTACT MATERIAL: BRASS)
- ⑤ FINITURA CONTATTO: 0.76µm DI ORO SU NICKEL NELLA ZONA DI CONTATTO
STAGNO SU NICKEL NELLA ZONA A SALDARE
(CONTACT FINISH: 0.76µm OF GOLD OVER NICKEL ON CONTACT ZONE
TIN OVER NICKEL ON SOLDER TAIL)
- ⑥ FINITURA CONTATTO: 0.38µm DI ORO SU NICKEL NELLA ZONA DI CONTATTO
STAGNO SU NICKEL NELLA ZONA A SALDARE
(CONTACT FINISH: 0.38µm OF GOLD OVER NICKEL ON CONTACT ZONE
TIN OVER NICKEL ON SOLDER TAIL)
- ⑦ FINITURA CONTATTO: 0.20µm DI ORO SU NICKEL NELLA ZONA DI CONTATTO
STAGNO SU NICKEL NELLA ZONA A SALDARE
(CONTACT FINISH: 0.20µm OF GOLD OVER NICKEL ON CONTACT ZONE
TIN OVER NICKEL ON SOLDER TAIL)
- ⑧ OBSOLETO
(OBSOLETE)
- ⑨ NON IN PRODUZIONE
(NOT YET RELEASED IN PRODUCTION)
- ⑩ TOLLERANZA NON CUMULATIVA
(NOT CUMULATIVE TOLERANCE)

THIS DRAWING IS A CONTROLLED DOCUMENT FOR AMP INCORPORATED. IT IS SUBJECT TO CHANGE AND THE CONTROLLING ENGINEERING ORGANIZATION SHOULD BE CONTACTED FOR THE LATEST REVISION.		DWN	AMP Italia S.p.A. C.so F.lli Cervi 15 Collegno (TO)	
DIMENSIONS:		CHK	NAME	
TOLERANCES UNLESS OTHERWISE SPECIFIED:		APVD	AMP-LATCH POST SUPPORT ASS'Y STRAIGHT LOW PROFILE	
0 PLC ±		PRODUCT SPEC	SIZE	CAGE CODE
1 PLC ±		APPLICATION SPEC	A3	00779
2 PLC ±		WEIGHT	DRAWING NO	
3 PLC ±		CUSTOMER DRAWING	C-281271	
4 PLC ±		SCALE	SHEET	
ANGLES ±		5:1	2 OF 2	
FINISH ±		REV	T	

X-ON Electronics

Largest Supplier of Electrical and Electronic Components

Click to view similar products for te connectivity manufacturer:

Other Similar products are found below :

[570416-000](#) [CLTEQ-M81CE-SSRELAY-4-20V](#) [D38999/24FJ4AN](#) [358838-000](#) [4-1195131-0](#) [650069-000](#) [SMD100-2](#) [CB-1022B-78](#)
[RM707012](#) [RP410012](#) [MMS42](#) [1-640426-8](#) [2EDL4CM](#) [DTS20W19-11PD-3028-LC](#) [RM202615](#) [NC6-P104-06](#) [MSPS103B](#) [DTS26F21-41AE](#) [DTS26F21-41PE-LC](#) [DTS26F21-11SE-3028-LC](#) [1932144-1](#) [293545-4](#) [LVR125S](#) [MS27466T25F4PB](#) [CKB-38-78010](#)
[1206SFF150F/63-2](#) [D38999/20JB35HA](#) [D38999/24WJ20PA](#) [1754138-1](#) [TE1500A2R2J](#) [DTS24F25-29PC-3028-LC](#) [D38999/24WG11HA](#)
[D38999/24WG11HN](#) [MS27467T21F11H](#) [DJT16E21-11HA](#) [1206SFH150F/24-2](#) [DTS24F19-11SC-3028-LC](#) [DTS24F21-41HN-LC](#)
[DTS24F21-41AN](#) [DTS24F21-41PN-LC](#) [RP330024](#) [MS27467T21F35J](#) [MS27467T21F11J](#) [MS27467T21F16H-LC](#) [MS27467T21F35H](#)
[MS27467T21F41H-LC](#) [DJT16E21-11PA-LC](#) [DJT16E21-11HA-LC](#) [DJT16E21-11AA](#) [MS27467T21B11JA](#)