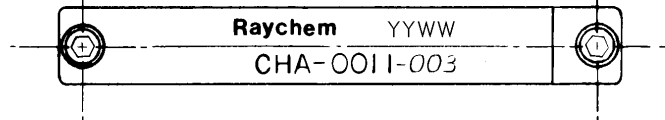
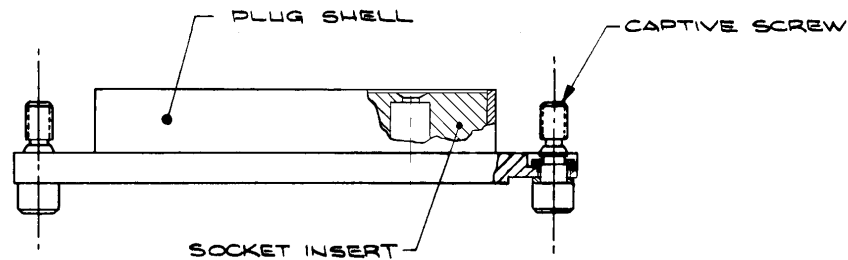
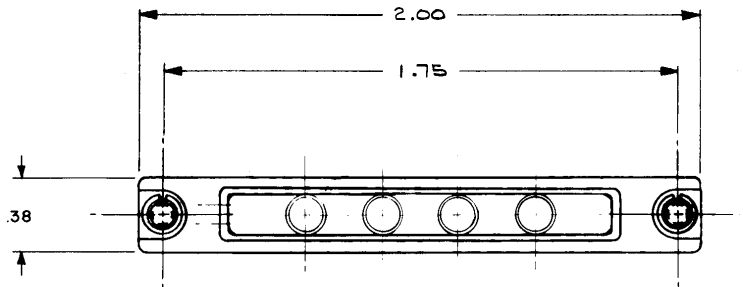


REVISIONS			
LTR	DESCRIPTION	DATE	APPROVED
B	CREATED ELECTRONIC FILE PER DCR# T-28453	1/12/2001	M.HIGGY



NOTES:

- SEALING:  
PROTECTIVE CAP DESIGNED TO ENVIRONMENTALLY SEAL THE MATING RECEPTACLE CONNECTOR, 1" MTC COAX SERIES WITH PIN CONTACTS.
- MATERIALS AND FINISHES:  
PLUG SHELL: ALUMINUM ALLOY PER QQ-A-591 OR QQ-A-255. CADMIUM PLATE PER QQ-P-416.  
SOCKET INSERT: HARD PLASTIC PER MIL-M-14 TYPE MFH.  
CAPTIVE SCREW: STAINLESS STEEL PER QQ-S-766, CADMIUM PLATE PER QQ-P-416 OVER NICKEL UNDERPLATE.

SPECIFICATION CONTROL DRAWING

UNLESS OTHERWISE SPECIFIED DIMENSIONS ARE IN INCHES. METRIC DIMENSIONS ARE IN BRACKETS.  DECIMALS .XXX ± { mm } .XX ± .01 { mm }  ANGLES .X ±  WEIGHT lbs { g }	DRAWN LUTTICKEN CHECKED APPROVED J. BLAIR APPROVED CAD NAME T28453.TIF	DATE DATE DATE 2/19/86 DATE DATE	Raychem Interconnect a division of TYCO ELECTRONICS 307 CONSTITUTION DRIVE MENLO PARK, CALIFORNIA 94025		TITLE PROTECTIVE CAP, PLUG WITH SOCKET INSERT 1 INCH MTC COAX SERIES (CADMIUM PLATED)  SIZE CODE IDENT. NO. DWG. NO. REV A 06090 CHA-0011-003 B
	THIRD ANGLE PROJECTION				
DO NOT SCALE THIS DRAWING			SHEET 1 OF 1		

## X-ON Electronics

Largest Supplier of Electrical and Electronic Components

*Click to view similar products for [Headers & Wire Housings category](#):*

*Click to view products by [TE Connectivity manufacturer](#):*

Other Similar products are found below :

[95000-104TRLF](#) [10135584-644402LF](#) [DF62W-EP2022PCA](#) [95000-106TRLF](#) [DF62W-2022SCA](#) [DF62W-EP2022PC](#) [2203348](#) [DF62W-2022SC](#) [1084018](#) [1029039](#) [1084017](#) [802-10-012-10-002000](#) [1112640](#) [1112639](#) [000-34000](#) [0009482033](#) [0009507031](#) [57102-S06-03LF](#) [57202-S52-04LF](#) [PCN6-15S-2.5E](#) [0039019024](#) [58102-G61-06LF](#) [582553-1](#) [0009485154](#) [0009508121](#) [0022285053](#) [0050291907](#) [018731A](#) [LY20-4P-DT1-P1E-BR](#) [02.125.8002.8](#) [60101931](#) [60598-1 \(Cut Strip\)](#) [M1625-3R/100](#) [61062-3](#) [61082-181009](#) [636-1427](#) [638009-1](#) [641938-9](#) [641991-4](#) [644168-1](#) [647662-1](#) [65039-019ELF](#) [65817-002LF](#) [65817-015LF](#) [65863-015LF](#) [66207-023LF](#) [67016-026LF](#) [67046-001LF](#) [67095-007LF](#) [67230-005LF](#)