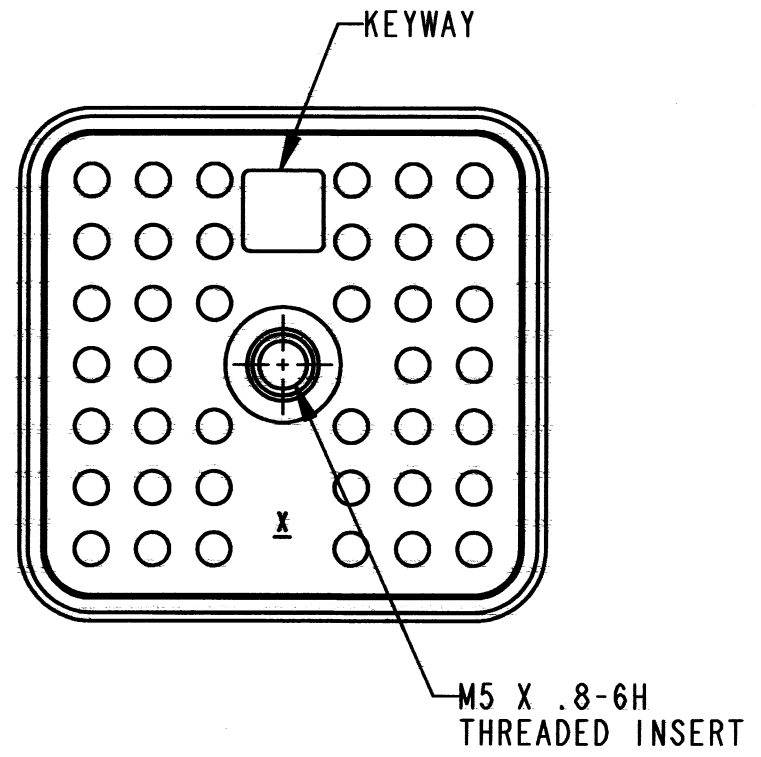
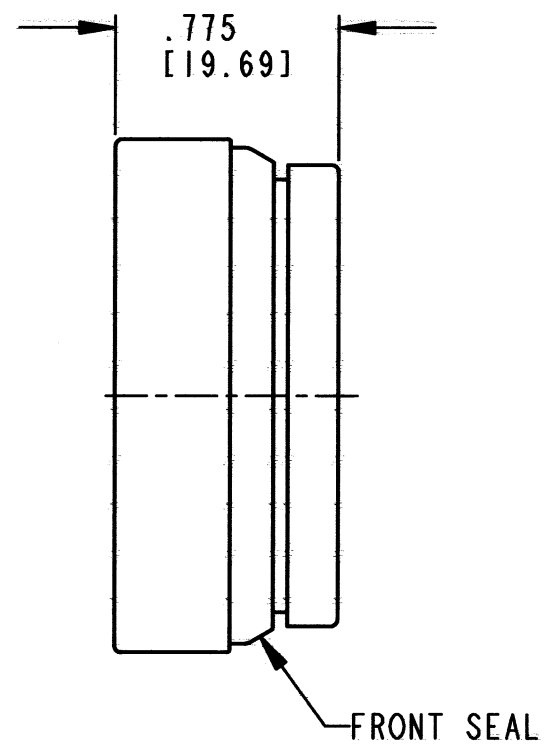
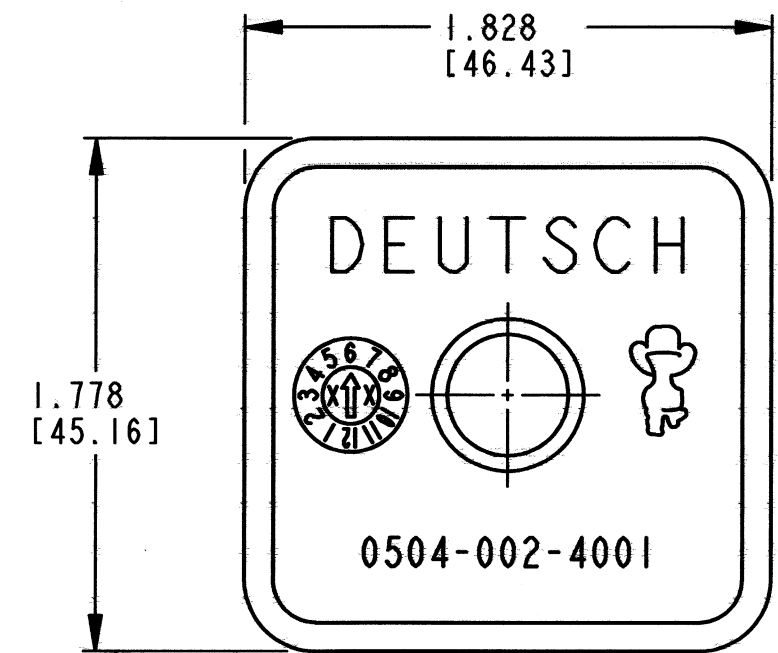


REV
C 0504-002-4001

REVISIONS			
SYM	DESCRIPTION	DATE	APPROVED
NC	NEW RELEASE PER E.O. A11171	7-30-91	J.A.
A	REVISED PER E.O. A13713	1-26-94	J.A.
B	REVISED & REDRAWN PER E.O. P20495	4-19-10	R.D.R.
C	REVISED PER E.O. P21257	1-9-12	RDR



4. MATERIAL: HOUSING: PLASTIC (BLACK); FRONT SEAL: RUBBER; THREADED INSERT: STEEL
3. THIS DUST CAP MATES WITH AEC14-40P*-**** AND AEC17-40P*-**** RECEPTACLE (*=A,B,C,D; ****=ALL MODIFICATIONS). CONSULT FACTORY FOR MODS.
2. DIMENSION TOLERANCE: ±.025 [.64].
1. DIMENSIONS ARE IN INCHES [MM].

NOTES:

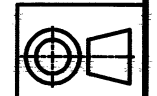
SIGNATURE & DATE	
DR	J. APOSTOL 19 APR 2010
CHK	D. Hasibuan 1/6/12
PE	D. Hasibuan 1/6/12
APPD	D. Meyer 1/6/12
SCALE	NONE

ENVIRONMENTAL
DUST CAP

AEC SERIES

ENVELOPE

EP	MATL. CODE
3850 INDUSTRIAL AVE. HEMET, CA 92545 DEUTSCH INDUSTRIAL	
B	0504-002-4001
DWG SIZE	CODE 11139 SHEET OF



X-ON Electronics

Largest Supplier of Electrical and Electronic Components

Click to view similar products for [Circular MIL Spec Tools, Hardware & Accessories](#) *category:*

Click to view products by [TE Connectivity](#) *manufacturer:*

Other Similar products are found below :

[0113-201-2025](#) [600-079-06](#) [600-146-06](#) [M10-101982-143](#) [M10-101982-163](#) [M10-101983-183](#) [M10-454396-008](#) [602GB18808](#) [6134-333-1990](#) [6134-334-1590](#) [6134-334-2190](#) [CS3102A-22-14PW](#) [M2887615-CD](#) [627-009](#) [M38999/9-19B](#) [630A007NF083A](#) [630B007M051A](#) [630BJ003NF032H](#) [637-149NF04B](#) [M39029/29-215](#) [6408-203V-09273](#) [6426-201-11343](#) [650FS002NF16](#) [660-008NF14S7-01](#) [660-009M22H8-03](#) [660-013NF19U6-210](#) [660-015M10S6-17](#) [660-015NF10S5-01](#) [660-015NF14R3.5-01](#) [660-023NF19H6-19](#) [660-024NF11S12-01](#) [660-024NF11S3-01](#) [660-024NF17S4-109](#) [660-050XM17F4-01](#) [660-068NF25R6-30G](#) [660-070M23S8-04](#) [660-073MTCH9-20](#) [M83723/61-18W](#) [M83723/61-218R](#) [M83723/61-224W](#) [667-084-23C](#) [667-084-35C](#) [667-224NF16](#) [687-697NF-1](#) [M85049/94-10-A](#) [M85049/96-7-A](#) [M855282-10A01A](#) [M85528/2-10B](#) [M855282-18A01A](#) [M85528/2-22A01A](#)