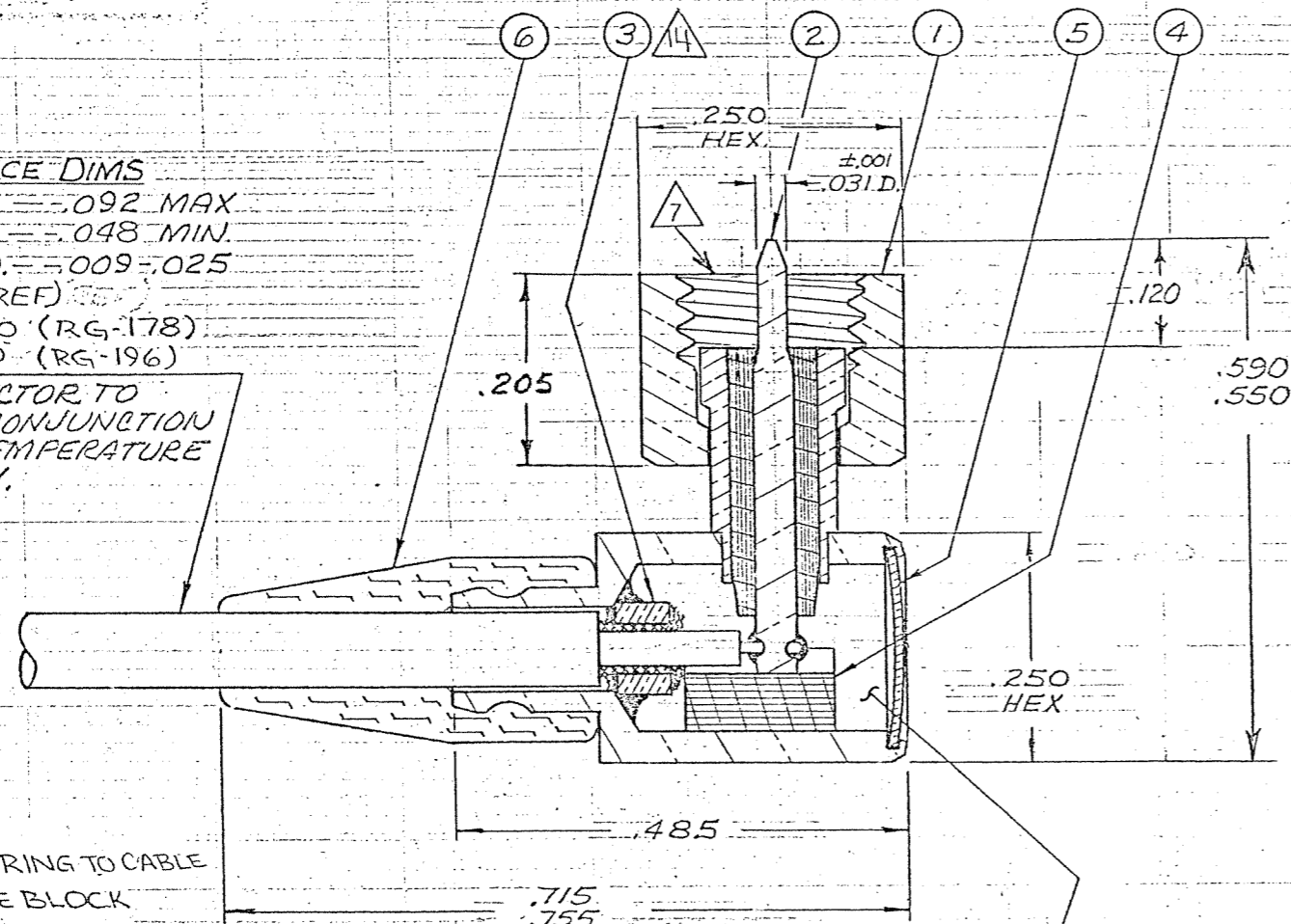


CABLE ACCEPTANCE DIMS
 JACKET D. .092 MAX
 SHIELD D. .048 MIN
 CENTER CONDU. D. .009-.025
 MALCO CABLE (REF)
 250-3957-0000 (RG-178)
 250-3960-0000 (RG-196)

NOTE: THIS CONNECTOR TO BE USED IN CONJUNCTION WITH HIGH TEMPERATURE CABLE ONLY.



Tyco Dwg 7-1532004-0
 Micro P/N 052-0204-0001

14. SOLDER CLAMP RING TO CABLE SHIELD & TO ANGLE BLOCK

13. FOR USE ON US ARMY MAT. CMND. 1018 9320 REV. D'

12. 052-0204-0001 SAME AS 052-0204

11. FOR USE ON BU. ORD. 1639685 REV. H
 (MALCO 030-0286-****)

10. THIS CONNECTOR SIMILAR TO 032-0015-0001

9. INSULATION RESISTANCE - 5.0×10^9 OHMS MIN

8. WORKING VOLTAGE = 750 V.R.M.S.

7. 190-32 UNF-2B THREAD

6. BODY SUB-ASSY SILVER BRAZED TOGETHER

5. SILVER PLATE .0002-.0004 PER QQ-S-365, TYPE II, GR. A

4. GOLD PLATE PER MIL-G-45204, TYPE II, GR. C, CL. 1 OVER COPPER STRIKE

3. ASSY TOOL # 010-0016-0000 REQ'D.

2. FOR ASSY. INSTRUCTIONS SEE RF-ASMB-87

1. THIS CONNECTOR MATES WITH ALL RECEPT. & JACKS IN SERIES S-50 AS LISTED IN MALCO CATALOG.

NOTES: UNLESS OTHERWISE SPECIFIED

QTY	PART No.	NOMENCLATURE	MAT'L & SPEC.	ITEM
1	003-0270-0000	BEND RELIEF CAP	SILICONE RUBBER ZZ-R-765	6
1	003-0098-0001	SEAL DISC	BRASS PER QQ-B-613	5
1	003-0331-0001	BACK-UP BUSHING	TEFLON PER L-P-403	4
1	003-0030-0001	CLAMP RING	BRASS PER QQ-B-626	3
	003-0050-0001	BUSHING	TEFLON PER L-P-403	
	005-0591-0002	PIN	BRASS PER QQ-B-626	
1	005-3491-0001	PIN SUB-ASSEMBLY		2
	003-0454-0000	COUPLING NUT	BRASS PER QQ-B-626	
	003-0078-0000	FERRULE	BRASS PER QQ-B-626	
	003-0135-0000	ANGLE BLOCK	BRASS PER QQ-B-626	
1	003-7309-0001	BODY SUB-ASSEMBLY		1

BEFORE CAPPING, FILL CAVITY WITH POTTING COMPOUND PER RF-ASMB-87.

ASSEMBLY	NO REQ'D	LET	ECO	REVISION DESCRIPTION	BY	DATE	APP
	N			UPDATE REV. LETTER.	TL	8/2/61	
					CK		

STANDARD TOLERANCES UNLESS OTHERWISE SPECIFIED
 DEC. $\pm .010$
 FRAC. \pm
 ANGLES \pm
 ECCENTRICITY
 MAX. T.I.R.
 HOLE DIA. \pm
 SURFACE ROUGHNESS
 MICRO INCHES
 THREADS TO MIL-S-7742
 COMMERCIAL TOLERANCES APPLY TO STOCK DIMENSIONS

MALCO
 A MICRODOT COMPANY, INC.
 220 PASADENA AVE., SO. PASADENA, CAL

SURFACE TREATMENT NOTED

MATERIAL NOTED

APP G.G.
 APP F.R.G.
 CHECKED BY
 DRAWN BY M.F.M.
 SCALE CS
 DATE 7/10/61
 CODE CDM
 DRAWING NUMBER 052-0204-0001

ANGLE PLUG

X-ON Electronics

Largest Supplier of Electrical and Electronic Components

Click to view similar products for [RF Connectors / Coaxial Connectors](#) category:

Click to view products by [TE Connectivity](#) manufacturer:

Other Similar products are found below :

[8915-1511-000](#) [89674-0827](#) [6001-7071-019](#) [6002-7051-003](#) [6002-7551-202](#) [6059674-1](#) [619550-1](#) [630059-000](#) [M39030/3-01N](#) [6500-7071-046](#) [6769](#) [CX050L2AQ](#) [7002-1541-010](#) [7002-1542-011](#) [7004-1512-000](#) [7009-1511-004](#) [7010-1511-000](#) [7029-1511-060](#) [7101-1541-010](#) [7101-1571-002](#) [7105-1521-002](#) [7145-1521-002](#) [7203-1571-003](#) [7209-1511-011](#) [7210-1511-015](#) [7210-1511-019](#) [73137-5015](#) [73216-2241](#) [73404-2300](#) [7405-1521-005](#) [7405-1521-802](#) [8527](#) [8547](#) [FS11V](#) [877931](#) [9049-9513-000](#) [9074-9513-000](#) [9101-9573-002](#) [910A205F](#) [9130-9573-002](#) [PL11SC-026](#) [PL375-33](#) [PL40-5](#) [PL74C-221](#) [PL75MC-217](#) [PL803-7](#) [1200690078](#) [1-201144-1](#) [R107003010W](#) [R110A172100](#)