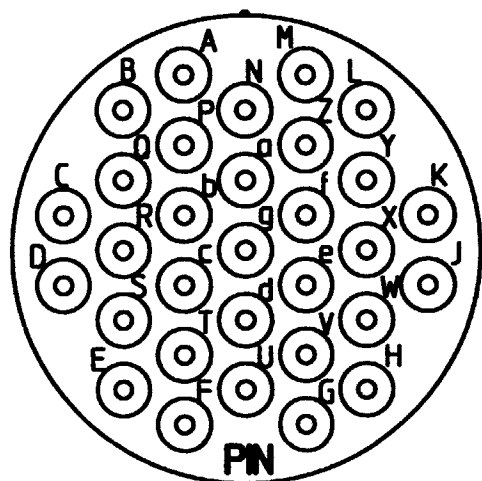


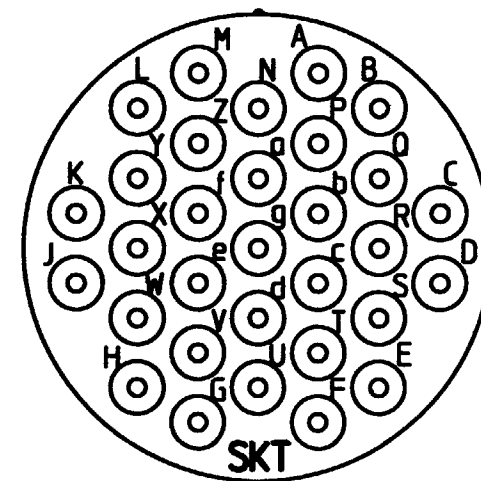
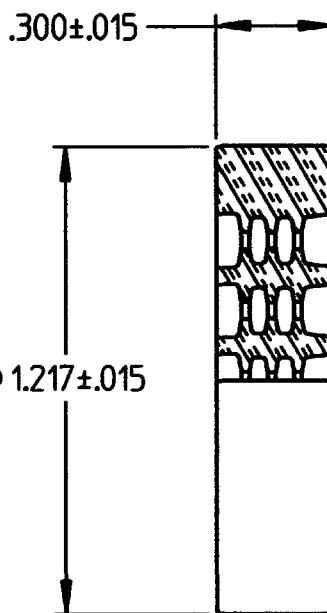
PROPERTY OF DEUTSCH E.C.D.
 This drawing contains proprietary information that shall not be disclosed, duplicated,
 nor used in whole or in part for any purpose other than to evaluate this drawing.

A 0810-201-2401

REVISIONS			
REV	DESCRIPTION	DATE	APPROVED
A	REVISED PER E.O. D1083	3/6/01	J.H.



GROMMET
PIN SIDE



GROMMET
SOCKET SIDE

- ALL DIMENSIONS ARE IN INCHES UNLESS OTHERWISE SPECIFIED.
- MATERIAL: SILICONE ELASTOMER (RED).
- GROMMET ARRANGEMENT IS 24-31 PER MIL-STD-1669.
- GROMMET IS USED WITH BOTH SIZE 24 FOLLOWERS FOR 19 MM AND 22 MM SPLIT CONVOLUTED TUBING.
- ALLISON PART NUMBER WTA10-24-03 REF.

SIGNATURE & DATE	
DR	R. GROSS 11-1-94
CHK	JP 11-9-94
PE	R. Gross 11-1-94
APPD	AGF
SCALE	NONE
WT	

SECONDARY GROMMET
 ALLISON WTA10-24-00
 BACKSHELL SYSTEM
 SIZE 24
 31 SIZE 16 CAVITIES
 ENVELOPE

CP	MATL CODE
DEUTSCH ENGINEERED CONNECTING DEVICES	
5733 W. Whittier Ave. Hemet, California	
A	0810-201-2401
SIZE	CODE
	SHEET 1 OF 1

0810-201-2401.dwg

X-ON Electronics

Largest Supplier of Electrical and Electronic Components

Click to view similar products for [Automotive Connectors](#) category:

Click to view products by [TE Connectivity](#) manufacturer:

Other Similar products are found below :

[003-018-000](#) [60403001](#) [60993906-B](#) [M902-2131](#) [M902-2161](#) [M902-2344](#) [72.330.1035.1](#) [73.353.4028.0](#) [F119300-B](#) [F166900](#) [F258300-B](#)
[F358300-B](#) [F407400](#) [F444110](#) [F487000](#) [F509500B-B](#) [827153-1](#) [8N1515-32-24P](#) [9-1326729-8](#) [925474-1](#) [928905-1](#) [964562-4](#) [968782-1](#)
[GT17SA-8DS-HU](#) [98891-1012](#) [98947-1016](#) [12004147](#) [12004475-L](#) [12010290](#) [12010309-B](#) [12015454](#) [12020219-B](#) [12041318-B](#) [12052225-](#)
[L](#) [12052466](#) [12064869](#) [12004327-B](#) [12015308](#) [12015384](#) [12015909](#) [1-21030-1](#) [12041254](#) [12041318](#) [12047946-B](#) [12047957](#) [12047957-L](#)
[12059473](#) [12066261](#) [12110546](#) [12110546-B](#)