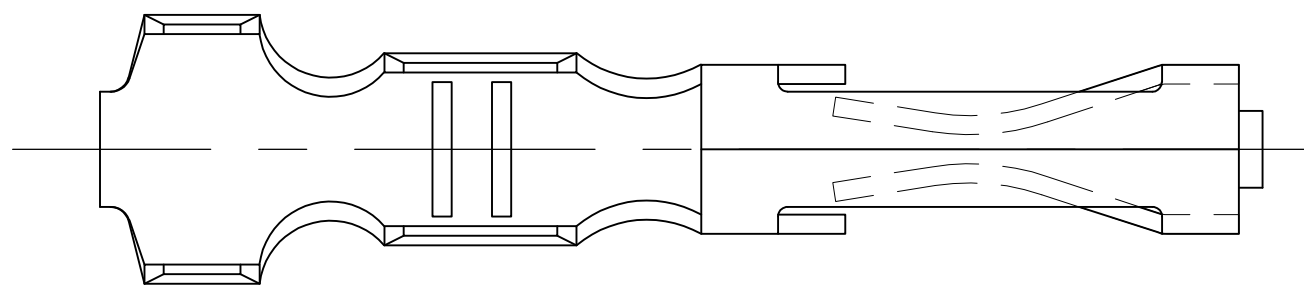


THIS DRAWING IS UNPUBLISHED. RELEASED FOR PUBLICATION
 © COPYRIGHT - By - ALL RIGHTS RESERVED.

LOC	DIST	REVISIONS			
P	LTR	DESCRIPTION	DATE	DWN	APVD
	00	A1	PART REVISION ADDITION IN THE TABLE	23JUN2015	NV PS



- 1 LOOSE PIECE TERMINAL MUST MEET ALL APPLICABLE STRIP SPECIFICATIONS IN ADDITION TO THOSE SHOWN.
- 2 PRE-PLATED MATERIAL: (.000050 NICKEL OVER ENTIRE TERMINAL, .000015 GOLD IN CONTACT AREA), TO BE PLATED WITH GOLD FLASH PER 112-33-1 OVER ENTIRE TERMINAL.
- 3 PRE-PLATED MATERIAL: (.000050 NICKEL OVER ENTIRE TERMINAL, .000030 GOLD IN CONTACT AREA), TO BE PLATED WITH GOLD FLASH PER 112-33-1 OVER ENTIRE TERMINAL.
- 4 LUBRICATE PER 118-25007.
- 5 PREPLATED STOCK: .000016 MIN TIN PER 112-20-1 (REF ONLY).
- 6 PRE-PLATED MATERIAL: (.000050 NICKEL OVER ENTIRE TERMINAL, .000015 GOLD ON CONTACT AREA), TO BE PLATED .000050-.000100 BRIGHT TIN-LEAD PER 112-26-1, IN TERMINATION AREA
- 7 PRE-PLATED MATERIAL: (.000050 NICKEL OVER ENTIRE TERMINAL, .000030 GOLD ON CONTACT AREA), TO BE PLATED .000050-.000100 BRIGHT TIN-LEAD PER 112-26-1, IN TERMINATION AREA

.010 MAX .580 .010 MAX

OBSOLETE	7	102102-7	102106-5	H
OBSOLETE	6	102102-6	102106-4	H
OBSOLETE	4 5	102102-5	102106-3	V
	3	102102-2	102106-2	V
OBSOLETE	2	102102-1	102106-1	H
	FINISH	MAKE FROM STRIP PART NO.	PART NUMBER	REV

THIS DRAWING IS A CONTROLLED DOCUMENT.		DWN KIRAN HOLAL 11OCT2013	STE TE Connectivity	
DIMENSIONS: INCHES		CHK JOSEPH OLSON 11OCT2013		
TOLERANCES UNLESS OTHERWISE SPECIFIED:		APVD JOSEPH OLSON 11OCT2013	NAME MOD I RECP LP	
0 PLC ± -		PRODUCT SPEC	SIZE	
1 PLC ± -		APPLICATION SPEC	CAGE CODE	DRAWING NO
2 PLC ± -		WEIGHT	A3	00779
3 PLC ± .005		CUSTOMER DRAWING	C-102106	
4 PLC ± -		SCALE	10:1	SHEET
ANGLES ± -		RESTRICTED TO	1 OF 1	
FINISH		REV	A1	

X-ON Electronics

Largest Supplier of Electrical and Electronic Components

Click to view similar products for [Headers & Wire Housings](#) category:

Click to view products by [TE Connectivity](#) manufacturer:

Other Similar products are found below :

[892-18-020-10-001101](#) [58102-G61-06LF](#) [582553-1](#) [0009485154](#) [009176003701906](#) [0050291907](#) [LY20-4P-DT1-P1E-BR](#) [02.125.8002.8](#)
[609-3404](#) [61062-3](#) [61082-181009](#) [622-3653LF](#) [63453-116](#) [636-1030](#) [636-1427](#) [636-3427](#) [636-4007](#) [641938-9](#) [641991-4](#) [644827-2](#) [65817-010LF](#) [65817-015LF](#) [65863-015LF](#) [66207-023LF](#) [67095-007LF](#) [67601157](#) [68645-018](#) [68648-049](#) [70.362.1628.0](#) [70-4210](#) [70-4226B](#) [70-4853B](#) [707-5020](#) [707-5028](#) [71.350.2428.0](#) [71918-208LF](#) [71961-016LF](#) [733-134](#) [733-162](#) [754199-000](#) [760-3052](#) [787-8014-00](#) [79531-3000](#)
[FCN-360C032-B](#) [FCN-367T-T012/H](#) [FCN-723D010/2](#) [80.063.4001.1](#) [800-90-001-10-001000](#) [800-90-010-10-002000](#) [801-43-002-10-013000](#)