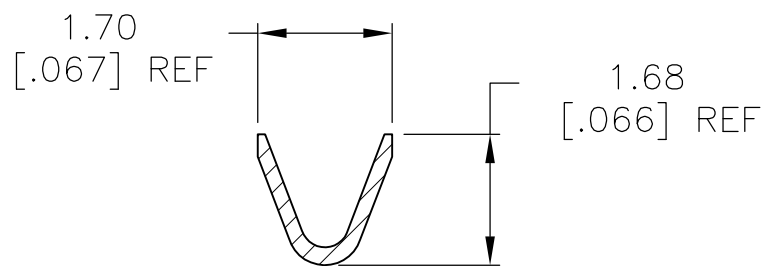
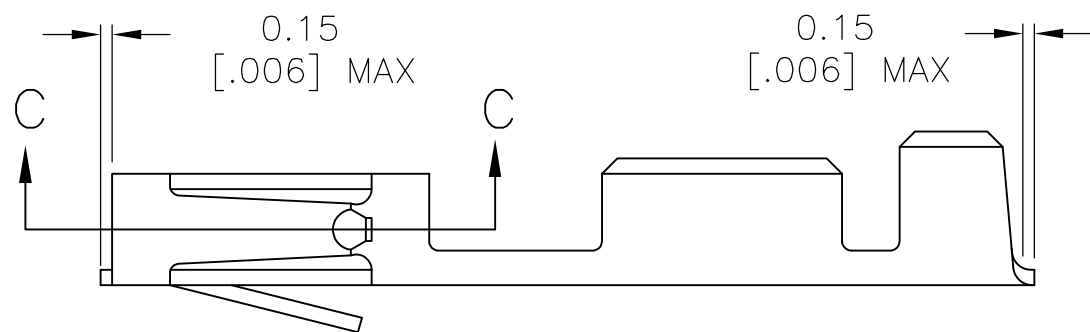
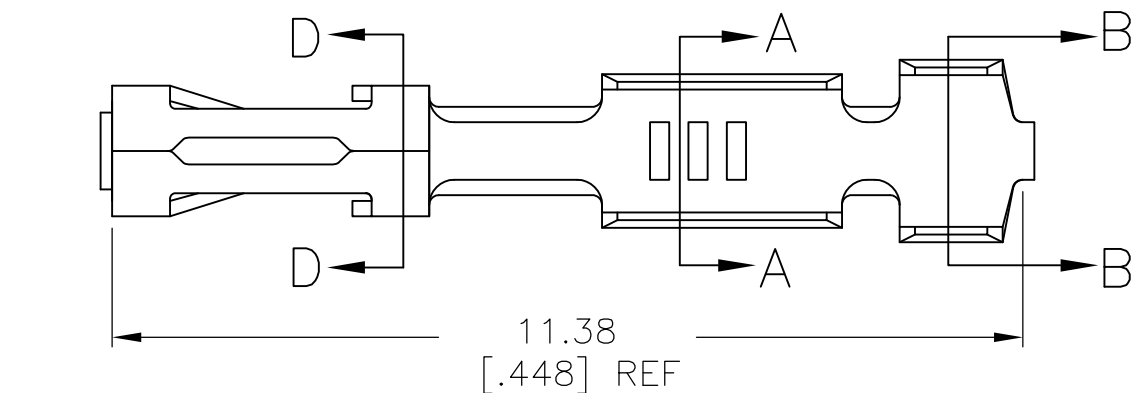


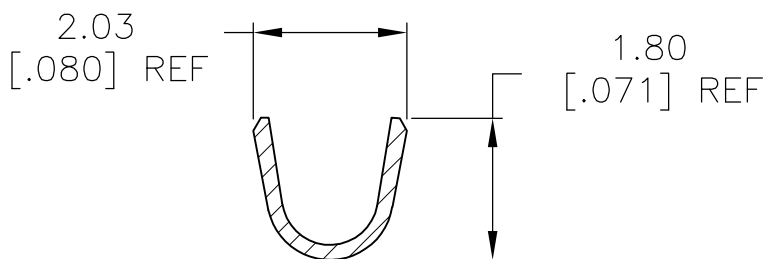
THIS DRAWING IS UNPUBLISHED. RELEASED FOR PUBLICATION

© COPYRIGHT - By - ALL RIGHTS RESERVED.

LOC	DIST	REVISIONS					
AD	00	P	LTR	DESCRIPTION	DATE	DWN	APVD
		M1		REVISED PER ECO-11-004820	11MAR11	RK	HMR

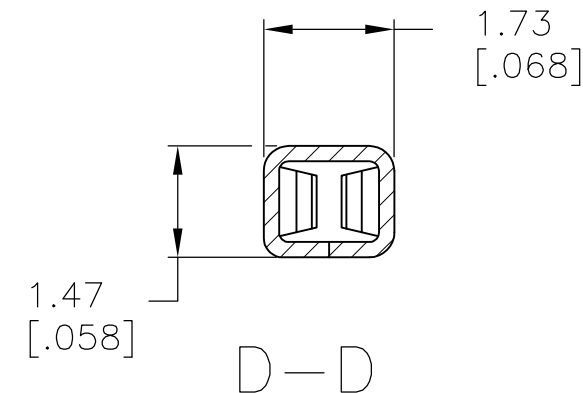
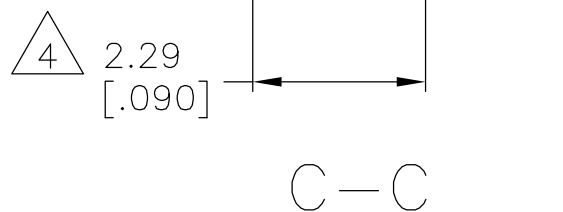


WIRE SIZE #22-#26
SECTION A-A



INSULATION RANGE 1.55 [.061] MAX
SECTION B-B

- 1 0.00076 [.000030] MIN GOLD IN CONTACT AREA, GOLD FLASH ON THE REMAINDER OF THE TERMINAL, ALL OVER
0.00127 [.000050]-0.00254 [.000100] NICKEL ENTIRE TERMINAL.
- 2 PREPLATED 0.00127 [.000050]-0.00381 [.000150] BRIGHT TIN.
- 3 CONTACTS TO BE TREATED WITH LUBRICANT.
- 4 POINT OF MEASUREMENT FOR PLATING THICKNESS (INSIDE BEAMS).



OBSOLETE	-	102128-5
OBSOLETE	-	102128-4
OBSOLETE	-	102128-3
	2 3	102128-2
	1	102128-1
FINISH REF		PART NUMBER

THIS DRAWING IS A CONTROLLED DOCUMENT.		DWN E. BRANDBERG	STE TE Connectivity			
DIMENSIONS: mm [INCHES]		CHK S. SHUEY 03JAN96				
TOLERANCES UNLESS OTHERWISE SPECIFIED:		APVD S. SHUEY 03JAN96	NAME			
0 PLC ± -		PRODUCT SPEC	CONTACT, MOD V, RECEPTACLE, CRIMP SNAP IN, LOOSE PIECE			
1 PLC ± -		108-25007	SIZE			
2 PLC ± 0.13 [.005]		APPLICATION SPEC	CAGE CODE			
3 PLC ± -		114-25003	DRAWING NO			
4 PLC ± -		WEIGHT	RESTRICTED TO			
ANGLES ± -		-	A3 00779 C-102128			
MATERIAL PhBr	FINISH SEE TABLE	CUSTOMER DRAWING		SCALE 10:1	SHEET 1 OF 1	REV M1

X-ON Electronics

Largest Supplier of Electrical and Electronic Components

Click to view similar products for [Headers & Wire Housings](#) category:

Click to view products by [TE Connectivity](#) manufacturer:

Other Similar products are found below :

[892-18-020-10-001101](#) [58102-G61-06LF](#) [582553-1](#) [0009485154](#) [009176003701906](#) [0050291907](#) [LY20-4P-DT1-P1E-BR](#) [02.125.8002.8](#)
[609-3404](#) [61062-3](#) [61082-181009](#) [622-3653LF](#) [63453-116](#) [636-1030](#) [636-1427](#) [636-3427](#) [636-4007](#) [641938-9](#) [641991-4](#) [644827-2](#) [65817-](#)
[010LF](#) [65817-015LF](#) [65863-015LF](#) [66207-023LF](#) [67095-007LF](#) [67601157](#) [68645-018](#) [68648-049](#) [70.362.1628.0](#) [70-4210](#) [70-4226B](#) [70-](#)
[4853B](#) [707-5020](#) [707-5028](#) [71.350.2428.0](#) [71918-208LF](#) [71961-016LF](#) [733-134](#) [733-162](#) [754199-000](#) [760-3052](#) [787-8014-00](#) [79531-3000](#)
[FCN-360C032-B](#) [FCN-367T-T012/H](#) [FCN-723D010/2](#) [80.063.4001.1](#) [800-90-001-10-001000](#) [800-90-010-10-002000](#) [801-43-002-10-013000](#)