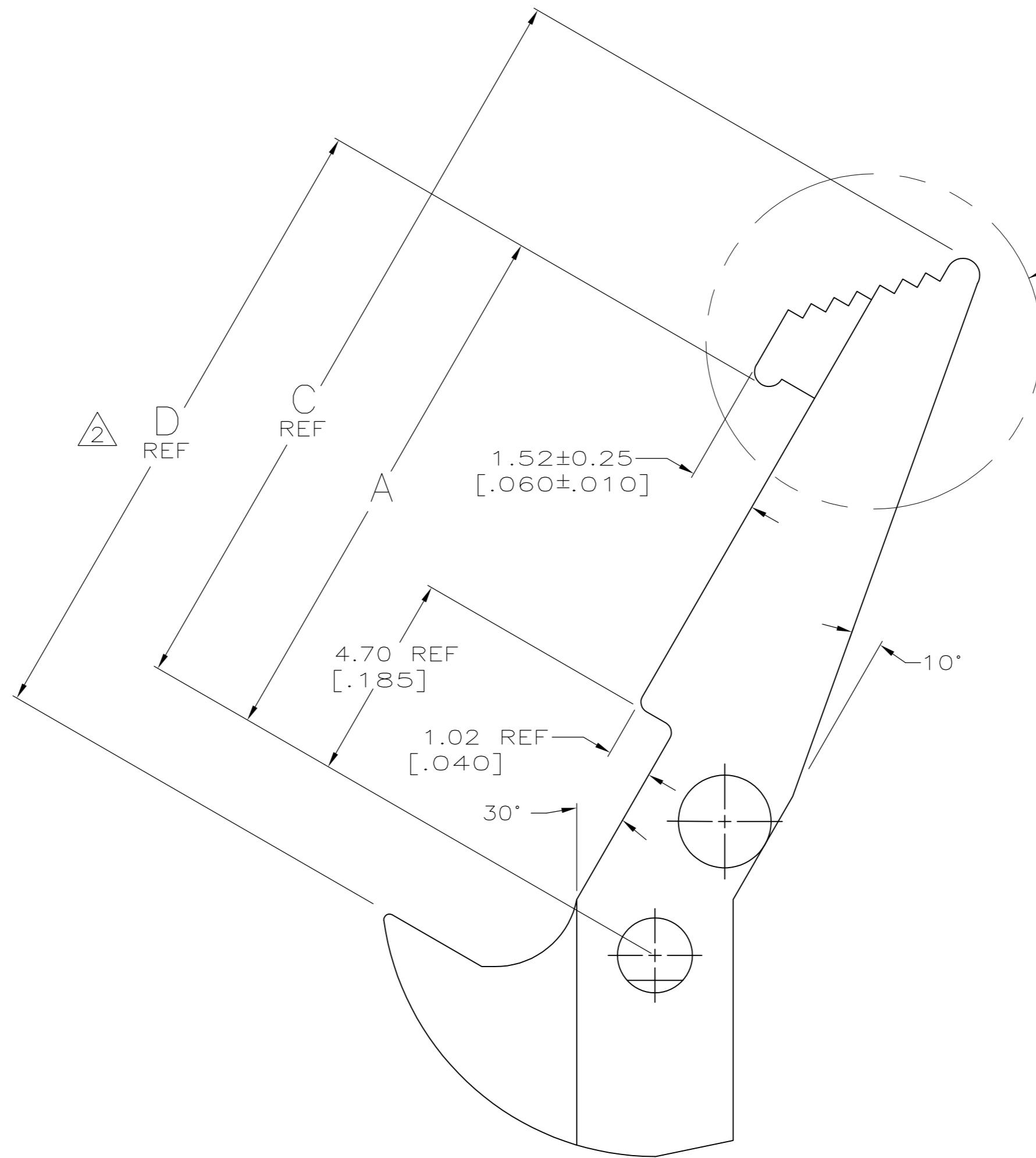
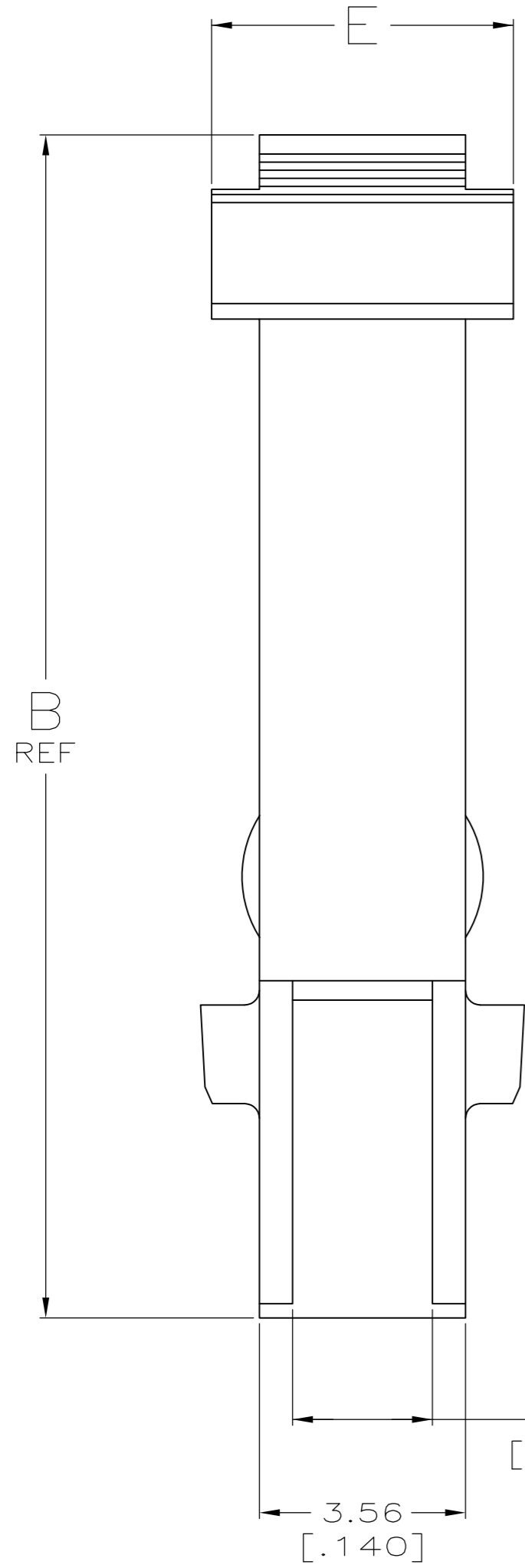
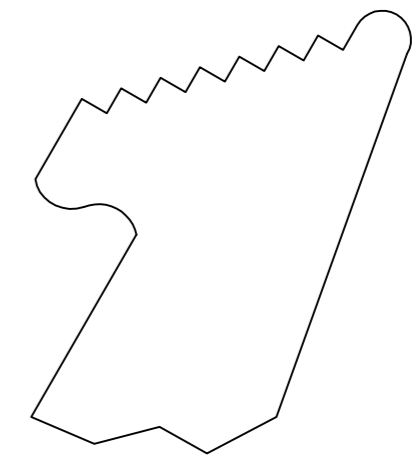


THIS DRAWING IS UNPUBLISHED. RELEASED FOR PUBLICATION  
 © COPYRIGHT - By - ALL RIGHTS RESERVED.

LOC		DIST		REVISIONS			
P	LTR	DESCRIPTION		DATE	DWN	APVD	
GP	00	H1	REVISED PER ECO-11-004835		11MAR11	RK	HMR



SEE DETAIL F  
HANDLE AREA  
SEE TABLE



DETAIL F  
HANDLE AREA

OBSOLETE

COLOR	HANDLE AREA	E	D	C	B	A	PART NUMBER
LIGHT BLUE	AS SHOWN	5.21 [.205]	10.57 [.416]	13.18 [.519]	16.31 [.642]	8.38 [.330]	102312-5
BLUE	AS SHOWN	5.21 [.205]	10.57 [.416]	13.18 [.519]	16.31 [.642]	8.38 [.330]	102312-4
BLACK	PER DETAIL F	3.56 [.140] REF	8.26 [.325]	10.74 [.423]	13.36 [.526]	6.07 [.239]	③ 102312-3
BLACK	PER DETAIL F	3.56 [.140] REF	12.04 [.474]	14.53 [.572]	17.14 [.675]	9.86 [.388]	① 102312-2
BLACK	AS SHOWN	5.21 [.205]	10.57 [.416]	13.18 [.519]	16.31 [.642]	8.38 [.330]	102312-1

- ① TO BE USED WITH AMP-LATCH™ CONNECTOR WITH STANDARD COVER.
- ② MATING RECEPTACLE HEIGHT.
- ③ NOT RELEASED, NOT PRODUCTION TOOLED.
- ④ FLAME RETARDANT PBT. UL94V-0 RATED.

THIS DRAWING IS A CONTROLLED DOCUMENT.

DWN	D.GELTZ	07/08/92
CHK	R.STONE	7-10-92
APVD	-	-
PRODUCT SPEC	-	-
APPLICATION SPEC	-	-
WEIGHT	-	-
CUSTOMER DRAWING	SCALE 10:1	SHEET 1 OF 1

TE Connectivity  
 LATCH, UNIVERSAL HEADER, AMP-LATCH

SIZE A2 CAGE CODE 00779 DRAWING NO C=102312 RESTRICTED TO -

REVISIONS: H1

## X-ON Electronics

Largest Supplier of Electrical and Electronic Components

*Click to view similar products for [Headers & Wire Housings](#) category:*

*Click to view products by [TE Connectivity](#) manufacturer:*

Other Similar products are found below :

[892-18-020-10-001101](#) [58102-G61-06LF](#) [582553-1](#) [0009485154](#) [009176003701906](#) [0050291907](#) [LY20-4P-DT1-P1E-BR](#) [02.125.8002.8](#)  
[609-3404](#) [61062-3](#) [61082-181009](#) [622-3653LF](#) [63453-116](#) [636-1030](#) [636-1427](#) [636-3427](#) [636-4007](#) [641938-9](#) [641991-4](#) [644827-2](#) [65817-010LF](#) [65817-015LF](#) [65863-015LF](#) [66207-023LF](#) [67095-007LF](#) [67601157](#) [68645-018](#) [68648-049](#) [70.362.1628.0](#) [70-4210](#) [70-4226B](#) [70-4853B](#) [707-5020](#) [707-5028](#) [71.350.2428.0](#) [71918-208LF](#) [71961-016LF](#) [733-134](#) [733-162](#) [754199-000](#) [760-3052](#) [787-8014-00](#) [79531-3000](#)  
[FCN-360C032-B](#) [FCN-367T-T012/H](#) [FCN-723D010/2](#) [80.063.4001.1](#) [800-90-001-10-001000](#) [800-90-010-10-002000](#) [801-43-002-10-013000](#)