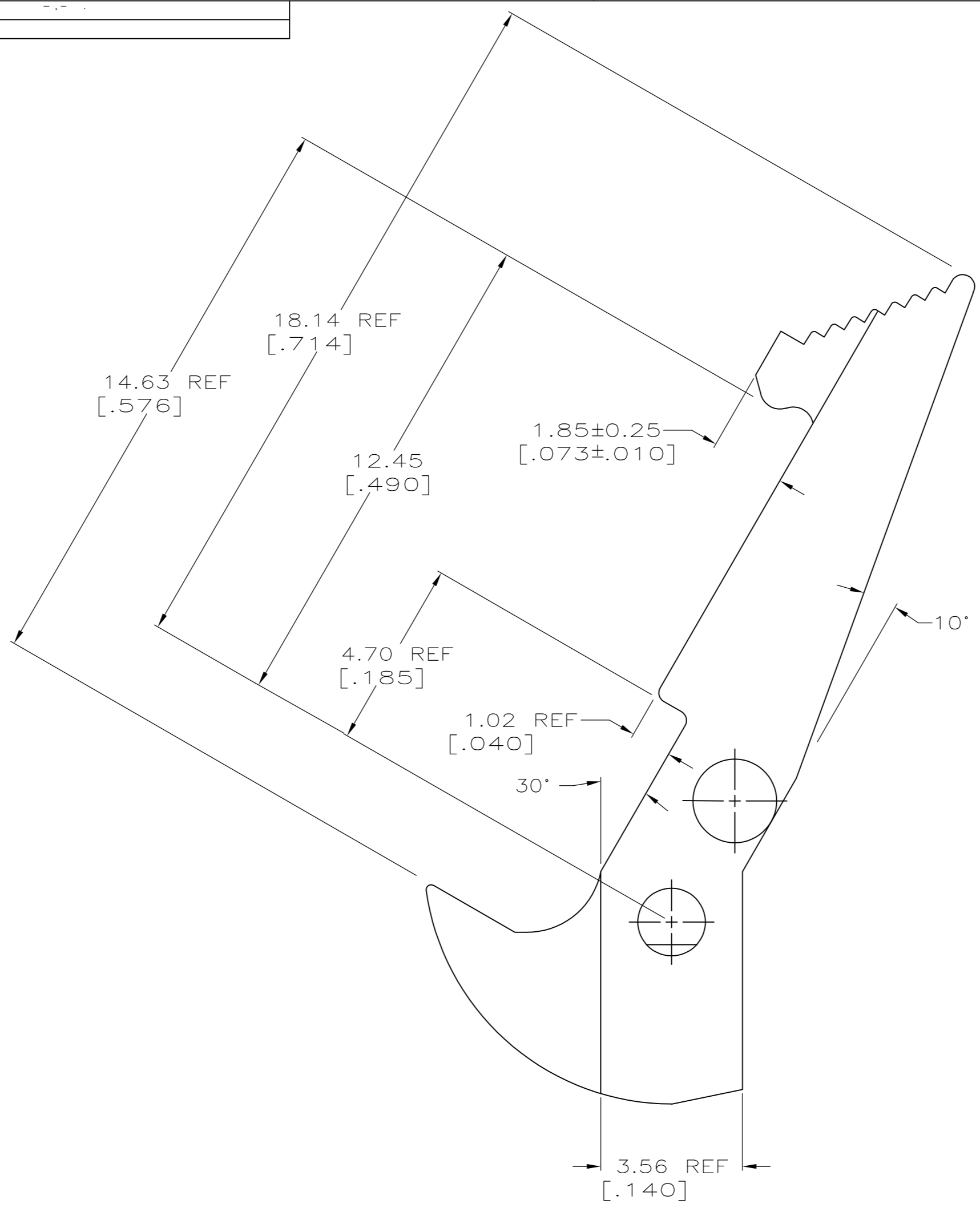
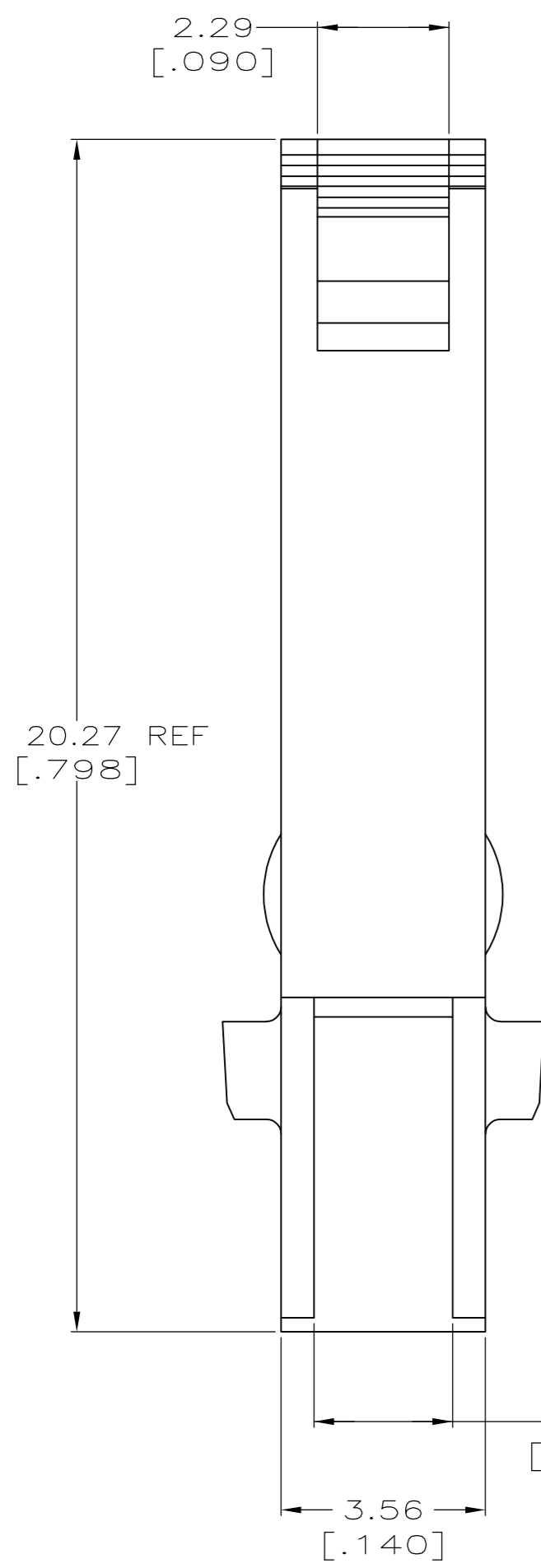


THIS DRAWING IS UNPUBLISHED. RELEASED FOR PUBLICATION  
 © COPYRIGHT - By - ALL RIGHTS RESERVED.

LOC	DIST	REVISIONS			
P	LTR	DESCRIPTION	DATE	OWN	APVD
GP	00	F1 REVISED PER ECO-11-004835	11MAR11	RK	HMR



1. TO BE USED WITH AMP-LATCH™ UNIVERSAL HEADER WHICH MATES WITH AMP-LATCH™ CONNECTOR WITH STRAIN RELIEF COVER.

THIS DRAWING IS A CONTROLLED DOCUMENT FOR AMP INCORPORATED. IT IS SUBJECT TO CHANGE AND THE CONTROLLING ENGINEERING ORGANIZATION SHOULD BE CONTACTED FOR THE LATEST REVISION.

THIS DRAWING IS A CONTROLLED DOCUMENT.		DWN D.GELTZ 07/08/92	<table border="1"> <tr> <td>BLUE</td> <td>102320-3</td> </tr> <tr> <td>BLACK</td> <td>102320-1</td> </tr> <tr> <td>COLOR</td> <td>PART NO</td> </tr> </table>		BLUE	102320-3	BLACK	102320-1	COLOR	PART NO						
BLUE	102320-3															
BLACK	102320-1															
COLOR	PART NO															
DIMENSIONS: MM[INCHES]		CHK R.STONE 7-10-92	<table border="1"> <tr> <td colspan="2"> </td> </tr> <tr> <td colspan="2">TE Connectivity</td> </tr> </table>				TE Connectivity									
TE Connectivity																
TOLERANCES UNLESS OTHERWISE SPECIFIED:		APVD R.KILE 7-13-92	NAME LATCH, UNIVERSAL HEADER, AMP-LATCH													
<table border="1"> <tr> <td>0 PLC</td> <td>± -</td> </tr> <tr> <td>1 PLC</td> <td>± -</td> </tr> <tr> <td>2 PLC</td> <td>± 0.13 [.005]</td> </tr> <tr> <td>3 PLC</td> <td>± -</td> </tr> <tr> <td>4 PLC</td> <td>± -</td> </tr> <tr> <td>ANGLES</td> <td>± ± 1°</td> </tr> </table>		0 PLC	± -	1 PLC	± -	2 PLC	± 0.13 [.005]	3 PLC	± -	4 PLC	± -	ANGLES	± ± 1°	PRODUCT SPEC -	SIZE A2	
0 PLC	± -															
1 PLC	± -															
2 PLC	± 0.13 [.005]															
3 PLC	± -															
4 PLC	± -															
ANGLES	± ± 1°															
MATERIAL FLAME RETARDANT PBT, UL94V-0 RATED		APPLICATION SPEC -	CAGE CODE 00779	DRAWING NO 102320												
FINISH -		WEIGHT -	RESTRICTED TO -													
CUSTOMER DRAWING			SCALE 10:1	SHEET 1 of 1												
			REV F1													

## X-ON Electronics

Largest Supplier of Electrical and Electronic Components

*Click to view similar products for [Headers & Wire Housings](#) category:*

*Click to view products by [TE Connectivity](#) manufacturer:*

Other Similar products are found below :

[892-18-020-10-001101](#) [58102-G61-06LF](#) [582553-1](#) [0009485154](#) [009176003701906](#) [0050291907](#) [LY20-4P-DT1-P1E-BR](#) [02.125.8002.8](#)  
[609-3404](#) [61062-3](#) [61082-181009](#) [622-3653LF](#) [63453-116](#) [636-1030](#) [636-1427](#) [636-3427](#) [636-4007](#) [641938-9](#) [641991-4](#) [644827-2](#) [65817-](#)  
[010LF](#) [65817-015LF](#) [65863-015LF](#) [66207-023LF](#) [67095-007LF](#) [67601157](#) [68645-018](#) [68648-049](#) [70.362.1628.0](#) [70-4210](#) [70-4226B](#) [70-](#)  
[4853B](#) [707-5020](#) [707-5028](#) [71.350.2428.0](#) [71918-208LF](#) [71961-016LF](#) [733-134](#) [733-162](#) [754199-000](#) [760-3052](#) [787-8014-00](#) [79531-3000](#)  
[FCN-360C032-B](#) [FCN-367T-T012/H](#) [FCN-723D010/2](#) [80.063.4001.1](#) [800-90-001-10-001000](#) [800-90-010-10-002000](#) [801-43-002-10-013000](#)