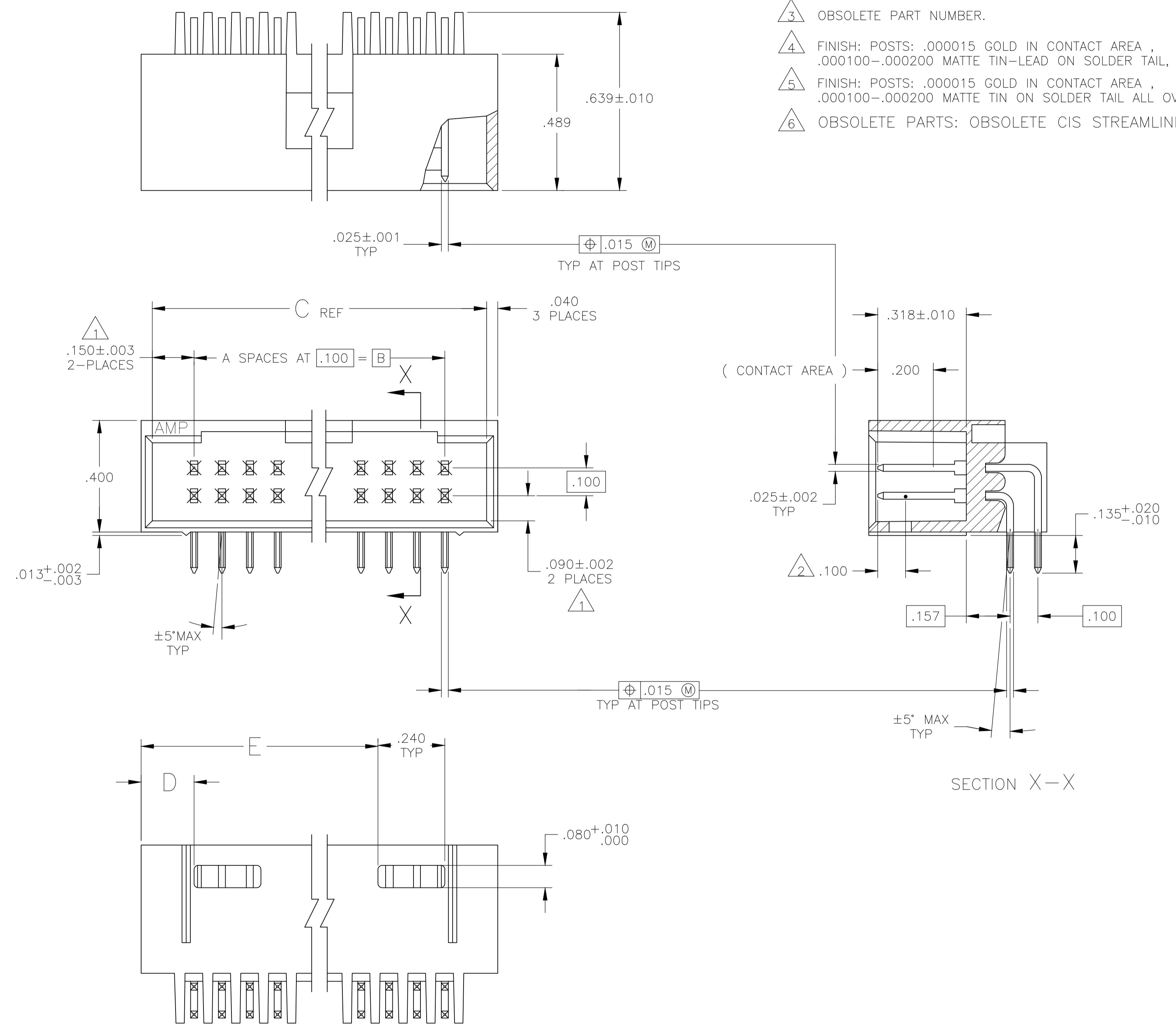


REVISIONS					
P	LTR	DESCRIPTION	DATE	DN	APVD
H4		PART STATUS UPDATED IN PART LIST TABLE	08FEB2018	SD	PS

- 1 THE NOTED DIMENSIONS APPLY AT THE INTERSECTION OF THE POST AND HOUSING.
- 2 POINT OF MEASUREMENT FOR PLATING THICKNESS.
- 3 OBSOLETE PART NUMBER.
- 4 FINISH: POSTS: .000015 GOLD IN CONTACT AREA, .000100-.000200 MATTE TIN-LEAD ON SOLDER TAIL, ALL OVER .000050 NICKEL.
- 5 FINISH: POSTS: .000015 GOLD IN CONTACT AREA, .000100-.000200 MATTE TIN ON SOLDER TAIL ALL OVER .000050 NICKEL.
- 6 OBSOLETE PARTS: OBSOLETE CIS STREAMLINING PER D.RENAUD/D.SINISI



PLATING	E	D	C	B	A	NO OF POSN	ASSEMBLY PART NUMBER
6	3.490	.190	3.800	3.500	35	72	8-102570-3
6	3.390	.190	3.700	3.400	34	70	8-102570-2
6	3.290	.190	3.600	3.300	33	68	8-102570-1
6	3.190	.190	3.500	3.200	32	66	8-102570-0
6	3.090	.190	3.400	3.100	31	64	7-102570-9
6	2.990	.190	3.300	3.000	30	62	7-102570-8
6	2.890	.190	3.200	2.900	29	60	7-102570-7
6	2.790	.190	3.100	2.800	28	58	7-102570-6
6	2.690	.190	3.000	2.700	27	56	7-102570-5
6	2.590	.190	2.900	2.600	26	54	7-102570-4
6	2.490	.190	2.800	2.500	25	52	7-102570-3
6	2.390	.190	2.700	2.400	24	50	7-102570-2
6	2.290	.190	2.600	2.300	23	48	7-102570-1
6	2.190	.190	2.500	2.200	22	46	7-102570-0
6	2.090	.190	2.400	2.100	21	44	6-102570-9
6	1.990	.190	2.300	2.000	20	42	6-102570-8
6	1.790	.190	2.100	1.800	18	38	6-102570-7
6	1.690	.190	2.000	1.700	17	36	6-102570-6
6	1.590	.190	1.900	1.600	16	34	6-102570-5
6	1.490	.190	1.800	1.500	15	32	6-102570-4
6	1.390	.190	1.700	1.400	14	30	6-102570-3
6	1.290	.190	1.600	1.300	13	28	6-102570-2
6	1.190	.190	1.500	1.200	12	26	6-102570-1
6	1.090	.190	1.400	1.100	11	24	6-102570-0
6	.990	.190	1.300	1.000	10	22	5-102570-9
6	.890	.190	1.200	.900	9	20	5-102570-8
6	---	.490	1.100	.800	8	18	5-102570-7
6	---	.390	1.000	.700	7	16	5-102570-6
6	---	.390	.900	.600	6	14	5-102570-5
6	---	.290	.800	.500	5	12	5-102570-4
6	---	.290	.700	.400	4	10	5-102570-3
6	---	.190	.600	.300	3	8	5-102570-2
6	1.890	.190	2.200	1.900	19	40	5-102570-1
6	3.490	.190	3.800	3.500	35	72	3-102570-3
6	3.390	.190	3.700	3.400	34	70	3-102570-2
6	3.290	.190	3.600	3.300	33	68	3-102570-1
6	3.190	.190	3.500	3.200	32	66	3-102570-0
6	3.090	.190	3.400	3.100	31	64	2-102570-9
6	2.990	.190	3.300	3.000	30	62	2-102570-8
6	2.890	.190	3.200	2.900	29	60	2-102570-7
6	2.790	.190	3.100	2.800	28	58	2-102570-6
6	2.690	.190	3.000	2.700	27	56	2-102570-5
6	2.590	.190	2.900	2.600	26	54	2-102570-4
6	2.490	.190	2.800	2.500	25	52	2-102570-3
6	2.390	.190	2.700	2.400	24	50	2-102570-2
6	2.290	.190	2.600	2.300	23	48	2-102570-1
6	2.190	.190	2.500	2.200	22	46	2-102570-0
6	2.090	.190	2.400	2.100	21	44	1-102570-9
6	1.990	.190	2.300	2.000	20	42	1-102570-8
6	1.790	.190	2.100	1.800	18	38	1-102570-7
6	1.690	.190	2.000	1.700	17	36	1-102570-6
6	1.590	.190	1.900	1.600	16	34	1-102570-5
6	1.490	.190	1.800	1.500	15	32	1-102570-4
6	1.390	.190	1.700	1.400	14	30	1-102570-3
6	1.290	.190	1.600	1.300	13	28	1-102570-2
6	1.190	.190	1.500	1.200	12	26	1-102570-1
6	1.090	.190	1.400	1.100	11	24	1-102570-0
6	.990	.190	1.300	1.000	10	22	102570-9
6	.890	.190	1.200	.900	9	20	102570-8
6	---	.490	1.100	.800	8	18	102570-7
6	---	.390	1.000	.700	7	16	102570-6
6	---	.390	.900	.600	6	14	102570-5
6	---	.290	.800	.500	5	12	102570-4
6	---	.290	.700	.400	4	10	102570-3
6	---	.190	.600	.300	3	8	102570-2
6	1.890	.190	2.200	1.900	19	40	102570-1

THIS DRAWING IS A CONTROLLED DOCUMENT. DIN H MOLL 25-8-87
 DIMENSIONS: INCHES. TOLERANCES UNLESS OTHERWISE SPECIFIED:
 0 PLC ± -
 1 PLC ± -
 2 PLC ± -
 3 PLC ± .005
 4 PLC ± -
 ANGLES ± -
 MATERIAL: HOUSING: FINE RETICENT THERMOPLASTICS; SOLDER: BLACK; POSTS: POS BRONZE. FINISH: SEE TABLE.
 WEIGHT: -
 CUSTOMER DRAWING
 APVD: R FEJDT 21-8-87
 NAME: HDR ASSY, MOD II SHROUDED .100X.100 C/L 4 SIDES, DR RIGHT ANGLE W/ .025 SQ POSTS
 SIZE: A1
 CAGE CODE: 00779
 DRAWING NO: 102570
 RESTRICTED TO: -
 SCALE: 4:1
 SHEET: 1 of 1
 REV: H4

X-ON Electronics

Largest Supplier of Electrical and Electronic Components

Click to view similar products for [Headers & Wire Housings](#) category:

Click to view products by [TE Connectivity](#) manufacturer:

Other Similar products are found below :

[95000-104TRLF](#) [10135584-644402LF](#) [DF62W-EP2022PCA](#) [95000-106TRLF](#) [DF62W-2022SCA](#) [DF62W-EP2022PC](#) [2203348](#) [DF62W-2022SC](#) [1084018](#) [1029039](#) [1084017](#) [802-10-012-10-002000](#) [1112640](#) [1112639](#) [000-34000](#) [0009482033](#) [0009507031](#) [57102-S06-03LF](#) [57202-S52-04LF](#) [PCN6-15S-2.5E](#) [0039019024](#) [58102-G61-06LF](#) [582553-1](#) [0009508121](#) [0050291907](#) [018731A](#) [LY20-4P-DT1-P1E-BR](#) [02.125.8002.8](#) [60101931](#) [60598-1 \(Cut Strip\)](#) [M1625-3R/100](#) [61062-3](#) [61082-181009](#) [636-1427](#) [638009-1](#) [641938-9](#) [641991-4](#) [644168-1](#) [647662-1](#) [65039-019ELF](#) [65817-002LF](#) [65817-015LF](#) [65863-015LF](#) [66207-023LF](#) [67016-026LF](#) [67046-001LF](#) [67095-007LF](#) [68002-116](#) [68016-236H](#) [68648-049](#)