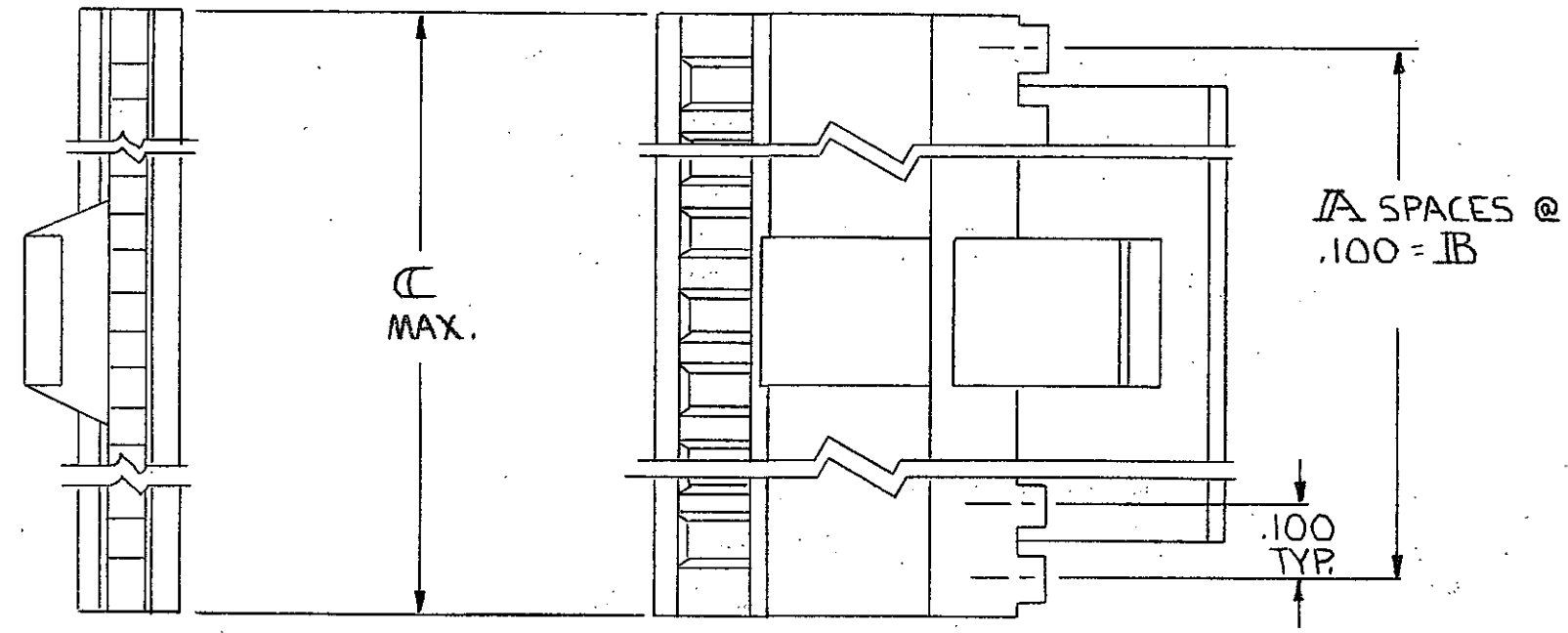
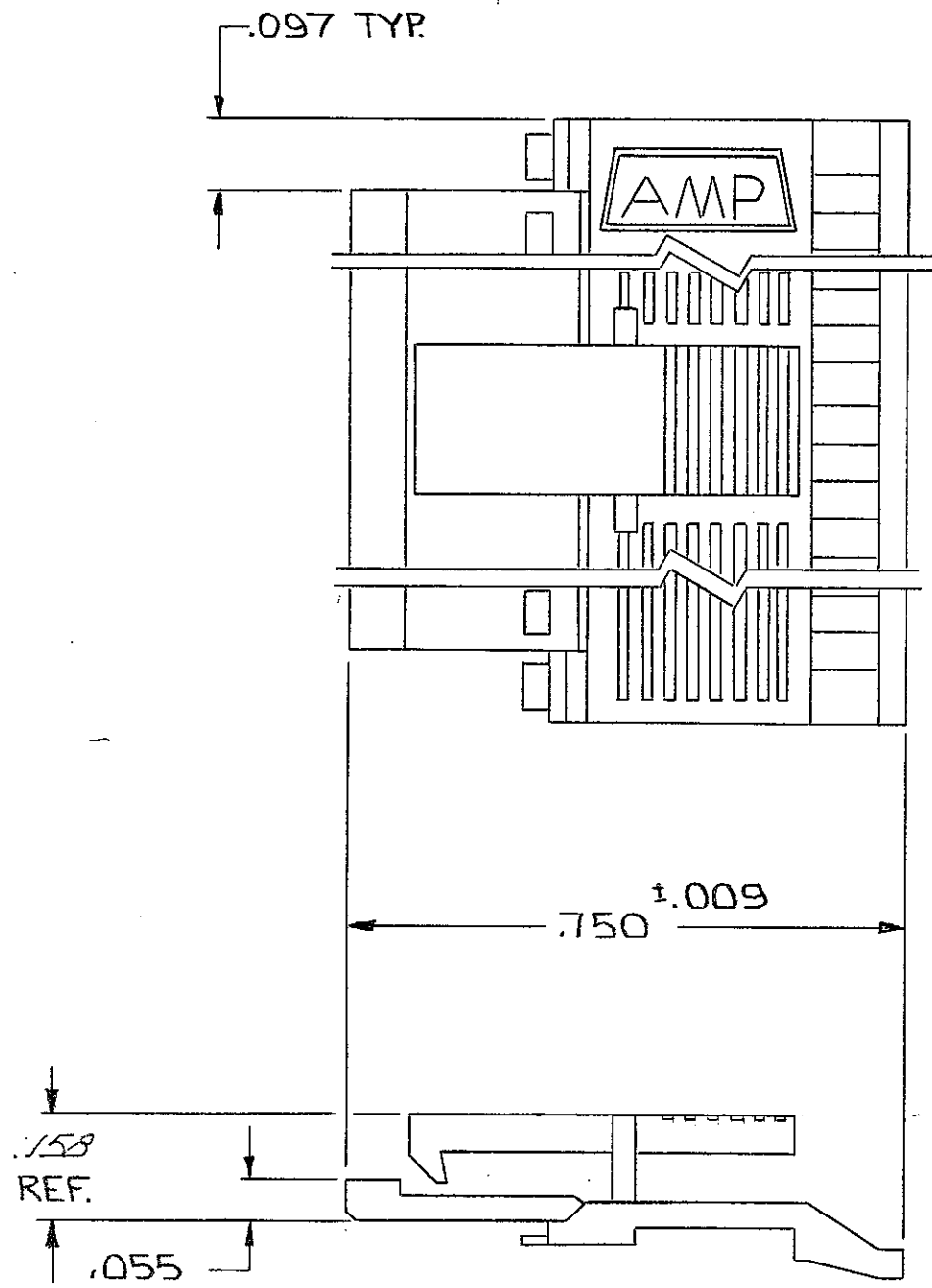


| REVISIONS | | | | | | | |
|-----------|---|------|-----|---------------------------|-----------|-----|------|
| P | F | ZONE | LTR | DESCRIPTION | DATE | DWN | APVD |
| 0 | | | F | REVISED PER ECO-15-008006 | 17NOV2015 | NK | MM |



| | | | | |
|-------|-------|----|-------------|------------|
| 3.600 | 3.500 | 35 | 72 | 3-102681-1 |
| 3.500 | 3.400 | 34 | 70 | 3-102681-0 |
| 3.400 | 3.300 | 33 | 68 | 2-102681-9 |
| 3.300 | 3.200 | 32 | 66 | 2-102681-8 |
| 3.200 | 3.100 | 31 | 64 | 2-102681-7 |
| 3.100 | 3.000 | 30 | 62 | 2-102681-6 |
| 3.000 | 2.900 | 29 | 60 | 2-102681-5 |
| 2.900 | 2.800 | 28 | 58 | 2-102681-4 |
| 2.800 | 2.700 | 27 | 56 | 2-102681-3 |
| 2.700 | 2.600 | 26 | 54 | 2-102681-2 |
| 2.600 | 2.500 | 25 | 52 | 2-102681-1 |
| 2.500 | 2.400 | 24 | 50 | 2-102681-0 |
| 2.400 | 2.300 | 23 | 48 | 1-102681-9 |
| 2.300 | 2.200 | 22 | 46 | 1-102681-8 |
| 2.200 | 2.100 | 21 | 44 | 1-102681-7 |
| 2.100 | 2.000 | 20 | 42 | 1-102681-6 |
| 2.000 | 1.900 | 19 | 40 | 1-102681-5 |
| 1.900 | 1.800 | 18 | 38 | 1-102681-4 |
| 1.800 | 1.700 | 17 | 36 | 1-102681-3 |
| 1.700 | 1.600 | 16 | 34 | 1-102681-2 |
| 1.600 | 1.500 | 15 | 32 | 1-102681-1 |
| 1.500 | 1.400 | 14 | 30 | 1-102681-0 |
| 1.400 | 1.300 | 13 | 28 | 1-102681-9 |
| 1.300 | 1.200 | 12 | 26 | 1-102681-8 |
| 1.200 | 1.100 | 11 | 24 | 1-102681-7 |
| 1.100 | 1.000 | 10 | 22 | 1-102681-6 |
| 1.000 | .900 | 9 | 20 | 1-102681-5 |
| .900 | .800 | 8 | 18 | 1-102681-4 |
| .800 | .700 | 7 | 16 | 1-102681-3 |
| .700 | .600 | 6 | 14 | 1-102681-2 |
| .600 | .500 | 5 | 12 | 102681-1 |
| C | B | A | NO. OF POS. | PART NO |

- 1. NO. OF POS. PERTAINS TO HOUSING SIZE.
- 2. THIS COVER TO BE USED WITH 102536.
- △ OBSOLETE PART NUMBER

| | | | |
|--|---|--|--------------|
| UNLESS OTHERWISE SPECIFIED DIMENSIONS ARE IN INCHES. TOLERANCES ON: DECIMALS ±.005 ANGLES ± | CONTRACT NO 10-31-80 | TE Connectivity NAME COVER-HALF, LATCH, MASS TERMINATION, AMP MODU, .100 €, FULL BAR POLARIZATION | |
| | MATERIAL FLAME RETARDANT THERMOPLASTIC COLOR= BLACK FINISH | | |
| OTHER APPD | | SCALE | SHEET 1 OF 1 |

X-ON Electronics

Largest Supplier of Electrical and Electronic Components

Click to view similar products for [Headers & Wire Housings](#) category:

Click to view products by [TE Connectivity](#) manufacturer:

Other Similar products are found below :

[892-18-020-10-001101](#) [58102-G61-06LF](#) [582553-1](#) [0009485154](#) [009176003701906](#) [0050291907](#) [LY20-4P-DT1-P1E-BR](#) [02.125.8002.8](#)
[609-3404](#) [61062-3](#) [61082-181009](#) [622-3653LF](#) [63453-116](#) [636-1030](#) [636-1427](#) [636-3427](#) [636-4007](#) [641938-9](#) [641991-4](#) [644827-2](#) [65817-](#)
[010LF](#) [65817-015LF](#) [65863-015LF](#) [66207-023LF](#) [67095-007LF](#) [67601157](#) [68645-018](#) [68648-049](#) [70.362.1628.0](#) [70-4210](#) [70-4226B](#) [70-](#)
[4853B](#) [707-5020](#) [707-5028](#) [71.350.2428.0](#) [71918-208LF](#) [71961-016LF](#) [733-134](#) [733-162](#) [754199-000](#) [760-3052](#) [787-8014-00](#) [79531-3000](#)
[FCN-360C032-B](#) [FCN-367T-T012/H](#) [FCN-723D010/2](#) [80.063.4001.1](#) [800-90-001-10-001000](#) [800-90-010-10-002000](#) [801-43-002-10-013000](#)