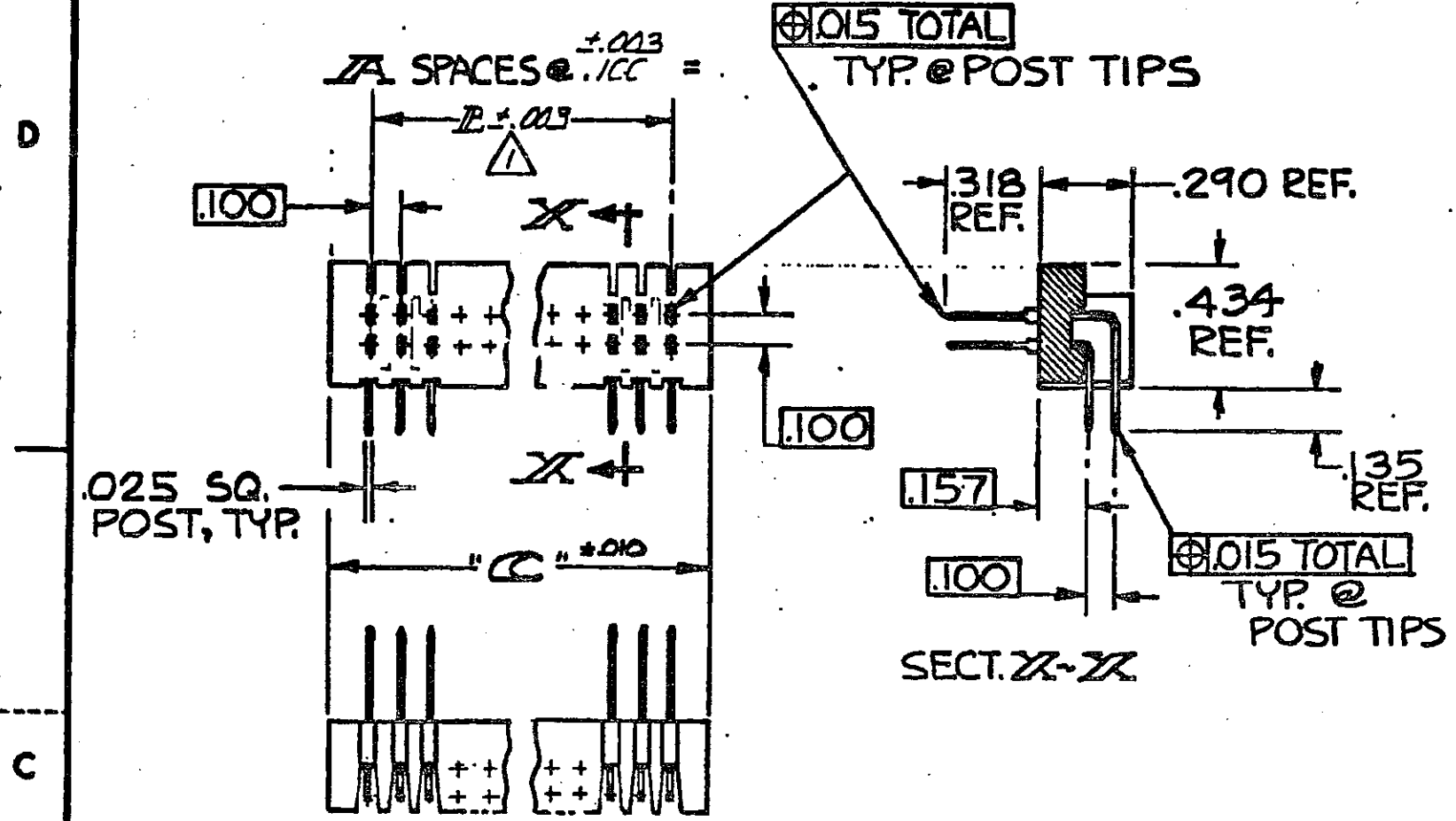


DRAWING MADE IN THIRD ANGLE PROJECTION

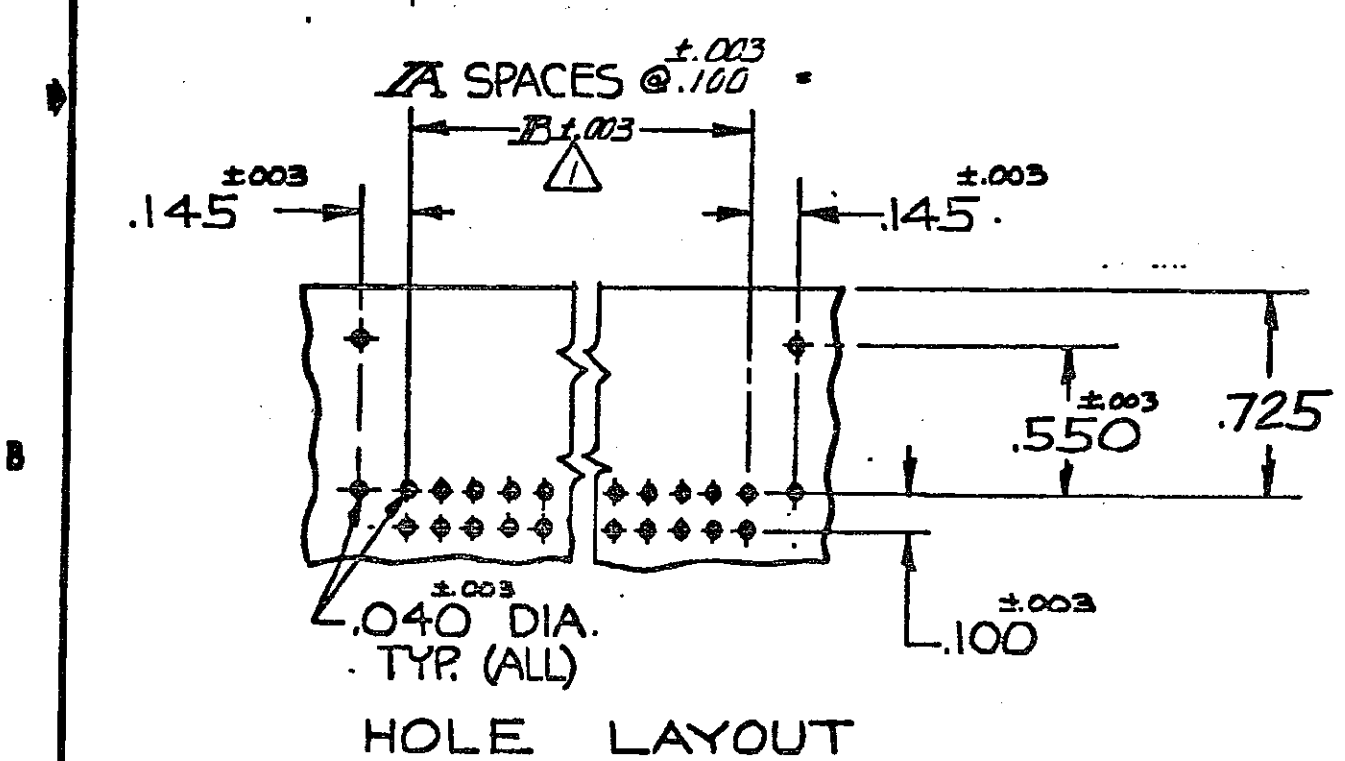
© COPYRIGHT 1981, 92 BY AMP INCORPORATED, HARRISBURG, PA. ALL INTERNATIONAL RIGHTS RESERVED. AMP INCORPORATED PRODUCTS COVERED BY U. S. AND FOREIGN PATENTS AND/OR PATENTS PENDING.

LOG AD 39

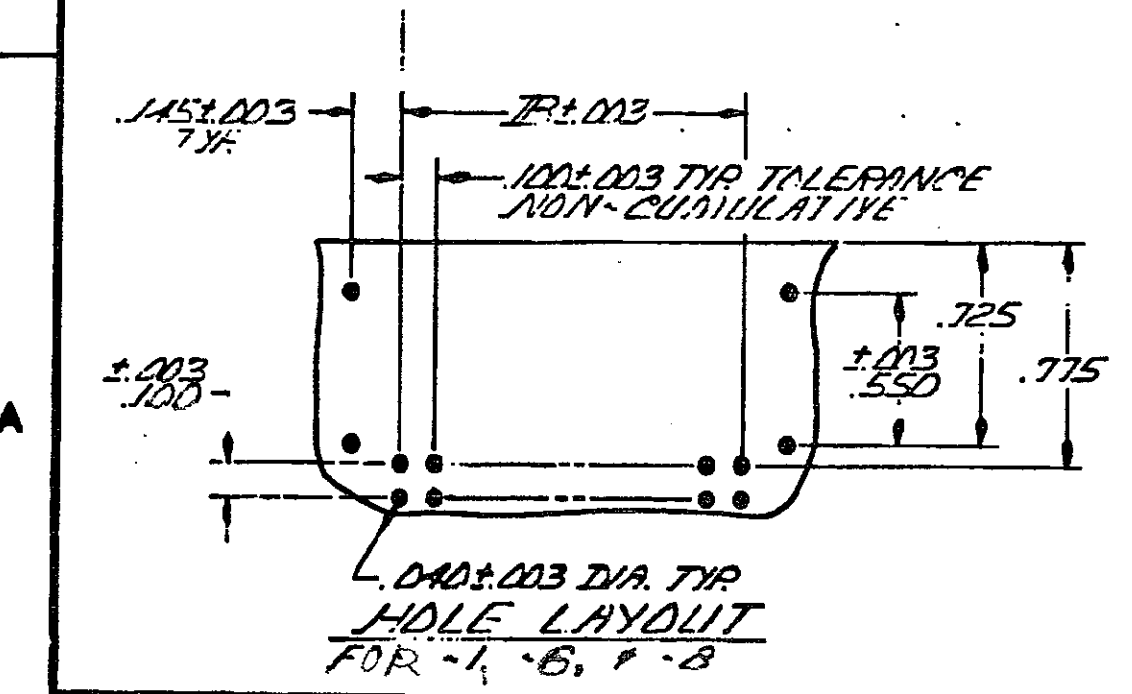
REVISIONS						
P	F	ZONE/LTR	DESCRIPTION	DATE	DWN	APVD
		L	REVISED PER ECO-15-008006	17NOV2015	NK	MM



△ TOL. NON-CUMULATIVE.



HOLE LAYOUT



HOLE LAYOUT FOR 1, 6, 8

USED WITH PART NUMBER	C DIM	B DIM	A SPACES	NUMBER OF POSITIONS	PART NUMBER
102791-7	1.830	1.600	16	34	1-102792-1
102791-5	3.120	2.900	29	61	1-102792-0
102791-1	1.430	1.200	12	26	-9
102791-2	.530	.300	3	8	-8
102791-3	.920	.700	7	16	102792-7
102791-1	.930	.200	2	6	102792-6
1-102791-0	1.130	.900	9	20	102792-5
102791-8	2.630	2.400	24	50	102792-4
102791-6	2.130	1.900	19	40	102792-3
102791-4	1.030	.800	8	18	102792-2
102791-2	.630	.400	4	10	102792-1

102792

UNLESS OTHERWISE SPECIFIED DIMENSIONS ARE IN INCHES. TOLERANCES ON: DECIMALS ±.005 ANGLES ±°	CONTRACT NO	TE Connectivity
	DR: <i>E. A. Braddock 3-25-96</i> CH: <i>J. Harrington 3-26-96</i> APPD: <i>J. Harrington 3-26-96</i>	
MATERIAL 156-FLAME RETARDANT THERMOPLASTIC, COLOR-BLACK, POSTS-COPPER ALLOY	DSGN APPD OTHER APPD	SIZE CODE IDENT NO DRAWING NO C 00779 102792
FINISH POSTS: .00050 GOLD IN CONTACT AREA, GOLD FLASH ON REMAINDER OF POST, .00050 NICKEL UNDERPLATE	SCALE 2-1	SHEET 1 OF 1

X-ON Electronics

Largest Supplier of Electrical and Electronic Components

Click to view similar products for [Headers & Wire Housings](#) category:

Click to view products by [TE Connectivity](#) manufacturer:

Other Similar products are found below :

[892-18-020-10-001101](#) [58102-G61-06LF](#) [582553-1](#) [0009485154](#) [009176003701906](#) [0050291907](#) [LY20-4P-DT1-P1E-BR](#) [02.125.8002.8](#)
[609-3404](#) [61062-3](#) [61082-181009](#) [622-3653LF](#) [63453-116](#) [636-1030](#) [636-1427](#) [636-3427](#) [636-4007](#) [641938-9](#) [641991-4](#) [644827-2](#) [65817-](#)
[010LF](#) [65817-015LF](#) [65863-015LF](#) [66207-023LF](#) [67095-007LF](#) [67601157](#) [68645-018](#) [68648-049](#) [70.362.1628.0](#) [70-4210](#) [70-4226B](#) [70-](#)
[4853B](#) [707-5020](#) [707-5028](#) [71.350.2428.0](#) [71918-208LF](#) [71961-016LF](#) [733-134](#) [733-162](#) [754199-000](#) [760-3052](#) [787-8014-00](#) [79531-3000](#)
[FCN-360C032-B](#) [FCN-367T-T012/H](#) [FCN-723D010/2](#) [80.063.4001.1](#) [800-90-001-10-001000](#) [800-90-010-10-002000](#) [801-43-002-10-013000](#)