

REVISIONS		
LTR	DESCRIPTION	DATE
C1	REDRAWN ON CAD PER ECO-11-013071	06/24/2011

NOTES:

- ALL DIMENSIONS ARE IN  $\frac{\text{Inches}}{\text{[Millimeters]}}$
- DIMENSIONS APPEARING IN THE TABLE ARE AS FOLLOWS
  - AS SUPPLIED
  - AFTER UNRESTRICTED RECOVERY
- COATING IS OPTIONAL. AS SUPPLIED DIMENSIONS APPEARING IN THE TABLE ARE FOR UNCOATED PARTS. WHEN COATING IS ADDED ENTRY DIAMETERS WILL BE REDUCED BY .06 MAX.
- THIS PART FITS MS 24523 SWITCH OR EQUIVALENT SHAPED BAT HANDLED SWITCH.
- STANDARD COLOR IS GREY OTHER COLORS ARE AVAILABLE UPON REQUEST.

ORDERING INFORMATION

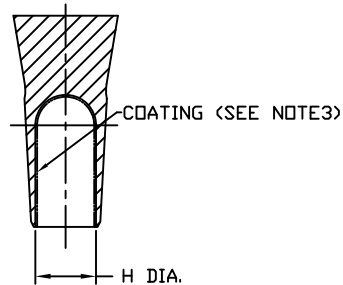
102A994 - X - XX / XX

BASE PART NUMBER

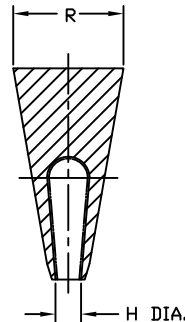
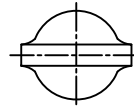
MATERIAL DASH NUMBER  
(SEE COMPATIBILITY CHART)

MODIFICATION NUMBER  
(IF NECESSARY, SEE FRONT OF SCD BINDER  
FOR COMPLETE LIST OF MODIFICATION LIST)

ADHESIVE SLASH NUMBER  
(IF NECESSARY SEE COMPATIBILITY CHART)



AS SUPPLIED



AFTER UNRESTRICTED RECOVERY

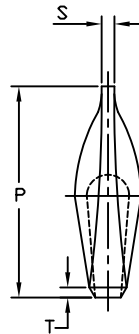


TABLE OF DIMENSIONS

PART NUMBER	H		P ±10% b	R ±10% b	S ±20% b	T ±20% b	WEIGHT NOM
	MIN a	MAX b					
102A994	.29 [7.4]	.18 [4.6]	.88 [22.4]	.46 [11.7]	.07 [1.78]	.07 [1.78]	.004 [2.0]

COMPATIBILITY CHART

MATERIAL DASH NO.	MATERIAL DESCRIPTION	RT SPEC	COATING SLASH NO.	COATING S NO.	COATING DESCRIPTION
-3	POLYOLEFIN, SEMI RIGID	RT-301	/42	S-1017	ADHESIVE

UNLESS OTHERWISE SPECIFIED DIMENSIONS ARE INCHES. METRIC DIMENSIONS ARE IN BRACKETS. DECIMAL TOLERANCES .XXX ± 0.005 [0.13 mm] .XX ± 0.01 [0.25 mm] .X ± 0.1 [0.50 mm] ANGLE TOLERANCE .X ± 1 DEG. TYCO ELECTRONICS RESERVES THE RIGHT TO AMEND THIS DRAWING AT ANY TIME. USERS SHOULD EVALUATE THE SUITABILITY OF THE PRODUCT FOR THEIR APPLICATION. © 2011 Tyco Electronics Corporation. All rights reserved.	DRAWN N.Chauhan 06/03/11	APPROVED D.Hurrell 06/03/11	Raychem Molded Parts <b>CUSTOMER DRAWING</b> TE Connectivity	
	RPN	TITLE SWITCH COVER		
CAD FILE: 102A994_CD		THIRD ANGLE PROJECTION	SIZE B	CODE IDENT. NO. 06090
DO NOT SCALE THIS DRAWING		DWG. NO. 102A994	SHEET 1 OF 1	

## X-ON Electronics

Largest Supplier of Electrical and Electronic Components

*Click to view similar products for [Cable Mounting & Accessories](#) category:*

*Click to view products by [TE Connectivity](#) manufacturer:*

Other Similar products are found below :

[582603-1](#) [009333-000](#) [727844N003](#) [747](#) [809090N001](#) [843188-000](#) [8666](#) [967279N002](#) [DB-11](#) [1300840039](#) [1300900096](#) [1301800416](#)  
[1302264450](#) [1300830184](#) [1300830729](#) [1300900039](#) [1301580036](#) [1301850553](#) [1301860939](#) [1302000074](#) [1302261315](#) [1302264431](#)  
[1337706-2](#) [APA18-AK](#) [1724](#) [1-787307-1](#) [185491N001](#) [1868](#) [HP-6N](#) [C-202-C](#) [202C221-13-0](#) [CA7308-000](#) [8S23-75FR-CS8184](#) [2684](#) [9648](#)  
[3089](#) [988382-000](#) [A72821-000](#) [AA401](#) [173506-000](#) [1823](#) [202C292-13-0](#) [202C302-13-0](#) [2109](#) [300625](#) [3330](#) [3412](#) [356247-1](#) [M9142](#)  
[M9143](#)