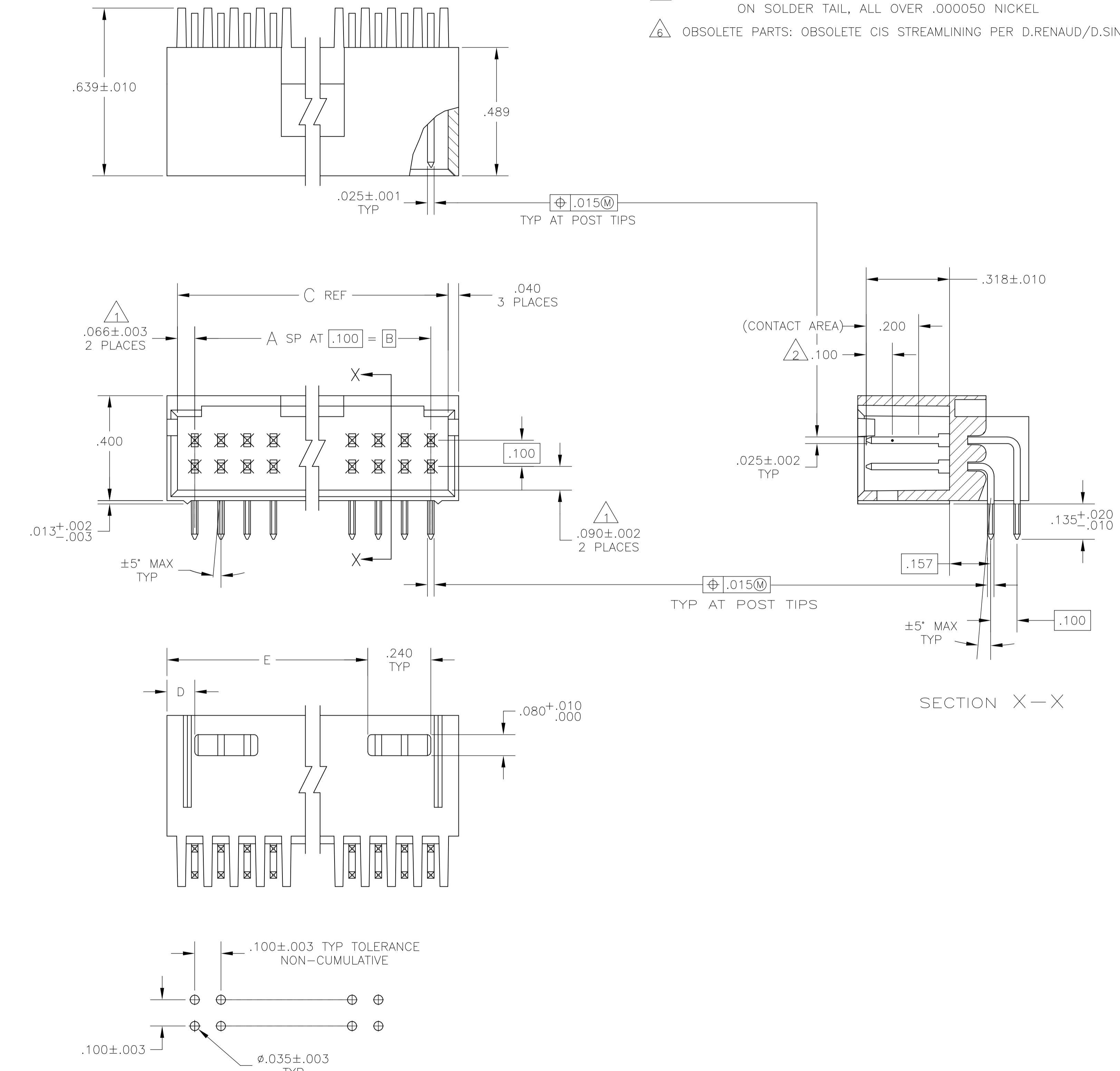


REVISIONS				
P	LTR	DESCRIPTION	DATE	APPD
K3		PART STATUS UPDATED IN PART LIST TABLE	19FEB2018	SD PS

- 1 THE NOTED DIMENSION APPLIES AT THE INTERSECTION OF THE POST AND HOUSING
- 2 POINT OF MEASUREMENT FOR PLATING THICKNESS.
- 3 PACKAGED IN SINGLE TUBES
- 4 POSTS: .000030 GOLD IN CONTACT AREA .000100-.000200 MATTE TIN LEAD ON SOLDER TAIL, ALL OVER .000050 NICKEL
- 5 POSTS: .000030 GOLD IN CONTACT AREA .000100-.000200 MATTE TIN ON SOLDER TAIL, ALL OVER .000050 NICKEL
- 6 OBSOLETE PARTS: OBSOLETE CIS STREAMLINING PER D.RENAUD/D.SINISI



PLATING	E	D	C	B	A	NO OF POSN	ASSEMBLY PART NUMBER
6	3	6	6	6	6	6	8-103166-6
6	3	6	6	6	6	74	8-103166-5
6	3	6	6	6	6	72	8-103166-4
6	3	6	6	6	6	70	8-103166-3
6	3	6	6	6	6	68	8-103166-2
6	3	6	6	6	6	66	8-103166-1
6	3	6	6	6	6	64	8-103166-0
6	3	6	6	6	6	62	7-103166-9
6	3	6	6	6	6	60	7-103166-8
6	3	6	6	6	6	58	7-103166-7
6	3	6	6	6	6	56	7-103166-6
6	3	6	6	6	6	54	7-103166-5
6	3	6	6	6	6	52	7-103166-4
6	3	6	6	6	6	50	7-103166-3
6	3	6	6	6	6	48	7-103166-2
6	3	6	6	6	6	46	7-103166-1
6	3	6	6	6	6	44	7-103166-0
6	3	6	6	6	6	42	6-103166-9
6	3	6	6	6	6	40	6-103166-8
6	3	6	6	6	6	38	6-103166-7
6	3	6	6	6	6	36	6-103166-6
6	3	6	6	6	6	34	6-103166-5
6	3	6	6	6	6	32	6-103166-4
6	3	6	6	6	6	30	6-103166-3
6	3	6	6	6	6	28	6-103166-2
6	3	6	6	6	6	26	6-103166-1
6	3	6	6	6	6	24	6-103166-0
6	3	6	6	6	6	22	5-103166-9
6	3	6	6	6	6	20	5-103166-8
6	3	6	6	6	6	18	5-103166-7
6	3	6	6	6	6	16	5-103166-6
6	3	6	6	6	6	14	5-103166-5
6	3	6	6	6	6	12	5-103166-4
6	3	6	6	6	6	10	5-103166-3
6	3	6	6	6	6	8	5-103166-2
6	3	6	6	6	6	6	5-103166-1
6	3	6	6	6	6	6	3-103166-6
6	3	6	6	6	6	74	3-103166-5
6	3	6	6	6	6	72	3-103166-4
6	3	6	6	6	6	70	3-103166-3
6	3	6	6	6	6	68	3-103166-2
6	3	6	6	6	6	66	3-103166-1
6	3	6	6	6	6	64	3-103166-0
6	3	6	6	6	6	62	2-103166-9
6	3	6	6	6	6	60	2-103166-8
6	3	6	6	6	6	58	2-103166-7
6	3	6	6	6	6	56	2-103166-6
6	3	6	6	6	6	54	2-103166-5
6	3	6	6	6	6	52	2-103166-4
6	3	6	6	6	6	50	2-103166-3
6	3	6	6	6	6	48	2-103166-2
6	3	6	6	6	6	46	2-103166-1
6	3	6	6	6	6	44	2-103166-0
6	3	6	6	6	6	42	1-103166-9
6	3	6	6	6	6	40	1-103166-8
6	3	6	6	6	6	38	1-103166-7
6	3	6	6	6	6	36	1-103166-6
6	3	6	6	6	6	34	1-103166-5
6	3	6	6	6	6	32	1-103166-4
6	3	6	6	6	6	30	1-103166-3
6	3	6	6	6	6	28	1-103166-2
6	3	6	6	6	6	26	1-103166-1
6	3	6	6	6	6	24	1-103166-0
6	3	6	6	6	6	22	103166-9
6	3	6	6	6	6	20	103166-8
6	3	6	6	6	6	18	103166-7
6	3	6	6	6	6	16	103166-6
6	3	6	6	6	6	14	103166-5
6	3	6	6	6	6	12	103166-4
6	3	6	6	6	6	10	103166-3
6	3	6	6	6	6	8	103166-2
6	3	6	6	6	6	6	103166-1

RECOMMENDED HOLE LAYOUT

THIS DRAWING IS A CONTROLLED DOCUMENT.

DIMENSIONS:	TOLERANCES UNLESS OTHERWISE SPECIFIED:	DRAWN: H MOLL 27AUG87	APPROVED: R FLICKER 29AUG87
INCHES:	0 PLC ± .005	DESIGNED: R FEIDT 28AUG87	NAME: R FLICKER
	1 PLC ± .005		PRODUCT SPEC:
	2 PLC ± .005		APPLICATION SPEC:
	3 PLC ± .005		WEIGHT:
	4 PLC ± .005		SCALE:
	ANGLES ± .005		SHEET 1 OF 1
			REV K3

MATERIAL: HOUSING: PLATE RETARDANT THERMOPLASTIC; COLOR: BLACK; POSTS: PHOS BRONZE.

STE TE Connectivity

HDR ASSY, MOD II, SHROUDED, 4 SIDES, DBL ROW, .100X.100 WITH .025 SQ POSTS

SIZE: A1 00779 C=103166

CUSTOMER DRAWING

## X-ON Electronics

Largest Supplier of Electrical and Electronic Components

*Click to view similar products for [Headers & Wire Housings](#) category:*

*Click to view products by [TE Connectivity](#) manufacturer:*

Other Similar products are found below :

[892-18-020-10-001101](#) [58102-G61-06LF](#) [582553-1](#) [0009485154](#) [009176003701906](#) [0050291907](#) [LY20-4P-DT1-P1E-BR](#) [02.125.8002.8](#)  
[609-3404](#) [61062-3](#) [61082-181009](#) [622-3653LF](#) [63453-116](#) [636-1030](#) [636-1427](#) [636-3427](#) [636-4007](#) [641938-9](#) [641991-4](#) [644827-2](#) [65817-](#)  
[010LF](#) [65817-015LF](#) [65863-015LF](#) [66207-023LF](#) [67095-007LF](#) [67601157](#) [68645-018](#) [68648-049](#) [70.362.1628.0](#) [70-4210](#) [70-4226B](#) [70-](#)  
[4853B](#) [707-5020](#) [707-5028](#) [71.350.2428.0](#) [71918-208LF](#) [71961-016LF](#) [733-134](#) [733-162](#) [754199-000](#) [760-3052](#) [787-8014-00](#) [79531-3000](#)  
[FCN-360C032-B](#) [FCN-367T-T012/H](#) [FCN-723D010/2](#) [80.063.4001.1](#) [800-90-001-10-001000](#) [800-90-010-10-002000](#) [801-43-002-10-013000](#)