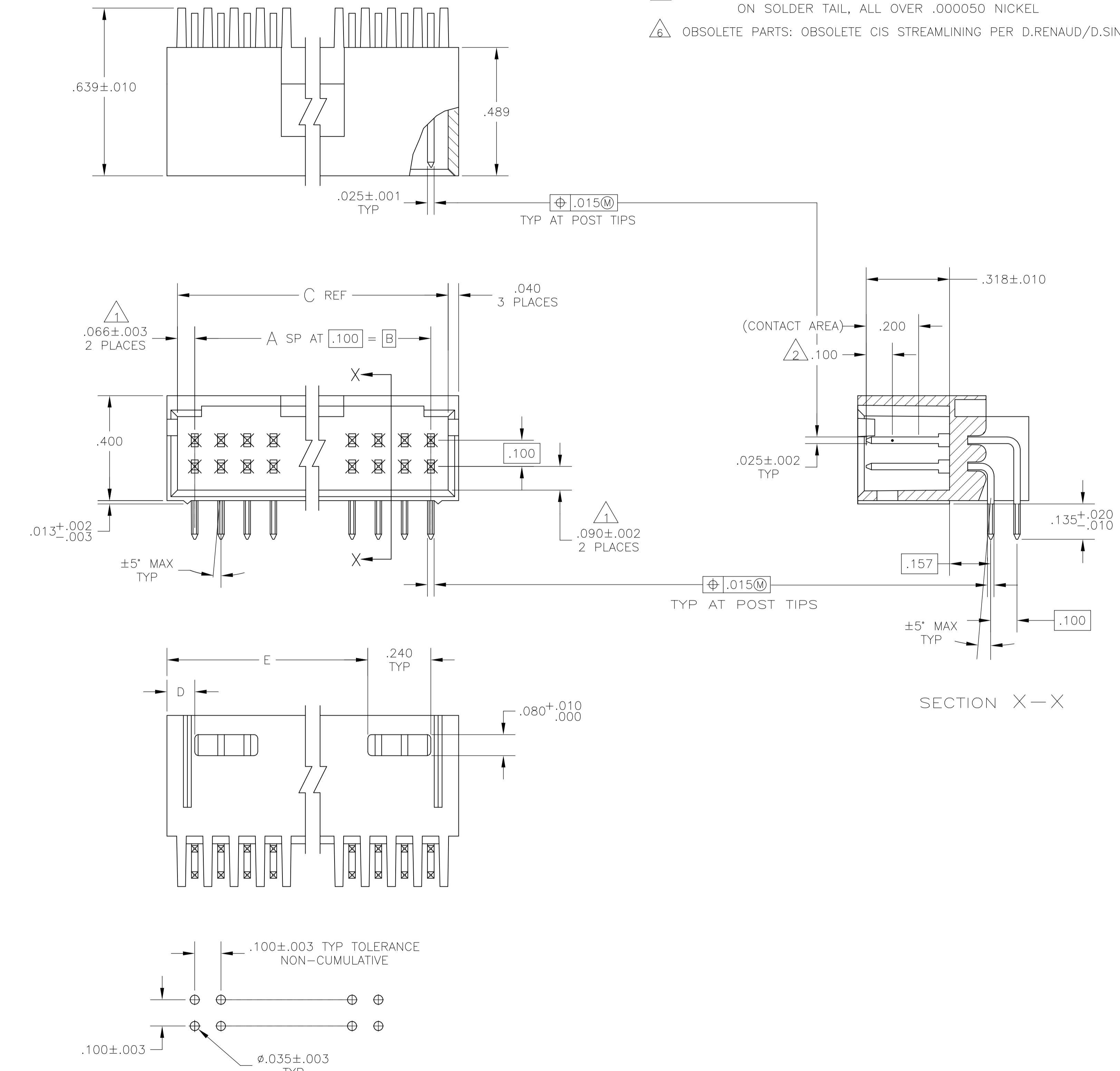


REVISIONS				
P	LTR	DESCRIPTION	DATE	APPD
K3		PART STATUS UPDATED IN PART LIST TABLE	19FEB2018	SD PS

- 1 THE NOTED DIMENSION APPLIES AT THE INTERSECTION OF THE POST AND HOUSING
- 2 POINT OF MEASUREMENT FOR PLATING THICKNESS.
- 3 PACKAGED IN SINGLE TUBES
- 4 POSTS: .000030 GOLD IN CONTACT AREA .000100-.000200 MATTE TIN LEAD ON SOLDER TAIL, ALL OVER .000050 NICKEL
- 5 POSTS: .000030 GOLD IN CONTACT AREA .000100-.000200 MATTE TIN ON SOLDER TAIL, ALL OVER .000050 NICKEL
- 6 OBSOLETE PARTS: OBSOLETE CIS STREAMLINING PER D.RENAUD/D.SINISI



PLATING	E	D	C	B	A	NO OF POSN	ASSEMBLY PART NUMBER
3	6	6	6	6	6	2	8-103166-6
6	6	5	5	5	5	36	8-103166-5
6	6	5	5	5	5	35	8-103166-4
6	6	5	5	5	5	34	8-103166-3
6	6	5	5	5	5	33	8-103166-2
6	6	5	5	5	5	32	8-103166-1
6	6	5	5	5	5	31	8-103166-0
6	6	5	5	5	5	30	7-103166-9
6	6	5	5	5	5	29	7-103166-8
6	6	5	5	5	5	28	7-103166-7
6	6	5	5	5	5	27	7-103166-6
6	6	5	5	5	5	26	7-103166-5
6	6	5	5	5	5	25	7-103166-4
6	6	5	5	5	5	24	7-103166-3
6	6	5	5	5	5	23	7-103166-2
6	6	5	5	5	5	22	7-103166-1
6	6	5	5	5	5	21	7-103166-0
6	6	5	5	5	5	20	6-103166-9
6	6	5	5	5	5	19	6-103166-8
6	6	5	5	5	5	18	6-103166-7
6	6	5	5	5	5	17	6-103166-6
6	6	5	5	5	5	16	6-103166-5
6	6	5	5	5	5	15	6-103166-4
6	6	5	5	5	5	14	6-103166-3
6	6	5	5	5	5	13	6-103166-2
6	6	5	5	5	5	12	6-103166-1
6	6	5	5	5	5	11	6-103166-0
6	6	5	5	5	5	10	5-103166-9
6	6	5	5	5	5	9	5-103166-8
6	6	5	5	5	5	8	5-103166-7
6	6	5	5	5	5	7	5-103166-6
6	6	5	5	5	5	6	5-103166-5
6	6	5	5	5	5	5	5-103166-4
6	6	5	5	5	5	4	5-103166-3
6	6	5	5	5	5	3	5-103166-2
6	6	5	5	5	5	2	5-103166-1
3	6	4	4	4	4	2	3-103166-6
6	6	4	4	4	4	36	3-103166-5
6	6	4	4	4	4	35	3-103166-4
6	6	4	4	4	4	34	3-103166-3
6	6	4	4	4	4	33	3-103166-2
6	6	4	4	4	4	32	3-103166-1
6	6	4	4	4	4	31	3-103166-0
6	6	4	4	4	4	30	2-103166-9
6	6	4	4	4	4	29	2-103166-8
6	6	4	4	4	4	28	2-103166-7
6	6	4	4	4	4	27	2-103166-6
6	6	4	4	4	4	26	2-103166-5
6	6	4	4	4	4	25	2-103166-4
6	6	4	4	4	4	24	2-103166-3
6	6	4	4	4	4	23	2-103166-2
6	6	4	4	4	4	22	2-103166-1
6	6	4	4	4	4	21	2-103166-0
6	6	4	4	4	4	20	1-103166-9
6	6	4	4	4	4	19	1-103166-8
6	6	4	4	4	4	18	1-103166-7
6	6	4	4	4	4	17	1-103166-6
6	6	4	4	4	4	16	1-103166-5
6	6	4	4	4	4	15	1-103166-4
6	6	4	4	4	4	14	1-103166-3
6	6	4	4	4	4	13	1-103166-2
6	6	4	4	4	4	12	1-103166-1
6	6	4	4	4	4	11	1-103166-0
6	6	4	4	4	4	10	103166-9
6	6	4	4	4	4	9	103166-8
6	6	4	4	4	4	8	103166-7
6	6	4	4	4	4	7	103166-6
6	6	4	4	4	4	6	103166-5
6	6	4	4	4	4	5	103166-4
6	6	4	4	4	4	4	103166-3
6	6	4	4	4	4	3	103166-2
6	6	4	4	4	4	2	103166-1

RECOMMENDED HOLE LAYOUT

THIS DRAWING IS A CONTROLLED DOCUMENT.

DIMENSIONS:	TOLERANCES UNLESS OTHERWISE SPECIFIED:	DRAWN: H MOLL 27AUG87	APPROVED: R FLICKER 29AUG87
INCHES:	0 PLC ± .005	DESIGNED: R FEIDT 28AUG87	NAME: R FLICKER
	1 PLC ± .005		PRODUCT SPEC:
	2 PLC ± .005		APPLICATION SPEC:
	3 PLC ± .005		SIZE: A1
	4 PLC ± .005		CAGE CODE: 00779
	ANGLES ± .005		DRAWING NO: 103166
	FINISH: SEE TABLE		RESTRICTED TO: -
MATERIAL: HOUSING: PLATE RETARDANT THERMOPLASTIC; COLOR: BLACK; POSTS: PHOS BRONZE	WEIGHT: -	CUSTOMER DRAWING	

SCALE: 4:1 SHEET 1 OF 1 REV: K3

## X-ON Electronics

Largest Supplier of Electrical and Electronic Components

*Click to view similar products for [Headers & Wire Housings](#) category:*

*Click to view products by [TE Connectivity](#) manufacturer:*

Other Similar products are found below :

[892-18-020-10-001101](#) [58102-G61-06LF](#) [582553-1](#) [0009485154](#) [009176003701906](#) [0050291907](#) [LY20-4P-DT1-P1E-BR](#) [02.125.8002.8](#)  
[609-3404](#) [61062-3](#) [61082-181009](#) [622-3653LF](#) [63453-116](#) [636-1030](#) [636-1427](#) [636-3427](#) [636-4007](#) [641938-9](#) [641991-4](#) [644827-2](#) [65817-010LF](#) [65817-015LF](#) [65863-015LF](#) [66207-023LF](#) [67095-007LF](#) [67601157](#) [68645-018](#) [68648-049](#) [70.362.1628.0](#) [70-4210](#) [70-4226B](#) [70-4853B](#) [707-5020](#) [707-5028](#) [71.350.2428.0](#) [71918-208LF](#) [71961-016LF](#) [733-134](#) [733-162](#) [754199-000](#) [760-3052](#) [787-8014-00](#) [79531-3000](#)  
[FCN-360C032-B](#) [FCN-367T-T012/H](#) [FCN-723D010/2](#) [80.063.4001.1](#) [800-90-001-10-001000](#) [800-90-010-10-002000](#) [801-43-002-10-013000](#)