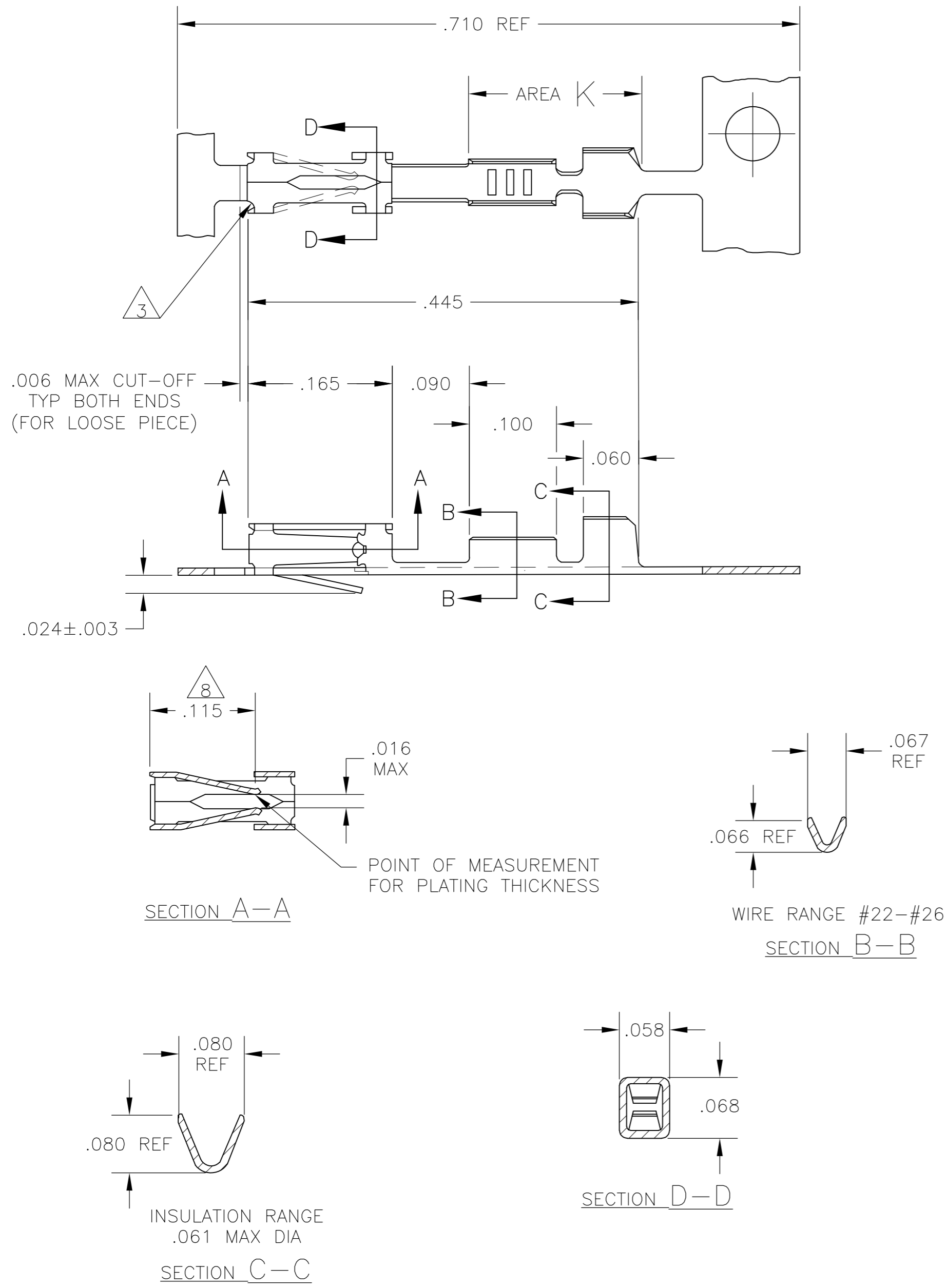


THIS DRAWING IS UNPUBLISHED. RELEASED FOR PUBLICATION
 © COPYRIGHT - By - ALL RIGHTS RESERVED.

LOC		DIST		REVISIONS			
P	LTR	DESCRIPTION		DATE	DWN	APVD	
	J2	REVISED PER ECO-11-004820		11MAR11	RK	HMR	



1. REELED FOR MINI APPLICATOR.
3. CUT OUTS ON BOX AT MANUFACTURER'S OPTION.
4. .000015 GOLD ON CONTACT AREA, .000100-.000200 BRIGHT TIN OR BRIGHT TIN-LEAD IN CRIMP AREA K, ALL OVER .000050 NICKEL.
5. .000030 GOLD ON CONTACT AREA, .000100-.000200 BRIGHT TIN OR BRIGHT TIN-LEAD IN CRIMP AREA K, ALL OVER .000050 NICKEL.
6. SHEARED EDGES PERMITTED TO BE UNPLATED.
7. .000100-.000200 BRIGHT TIN-LEAD OVER .000030 NICKEL.
8. POINT OF MEASUREMENT FOR PLATING THICKNESS (INSIDE BEAMS)
9. OBSOLETE PART NUMBER
10. SUPERCEDED BY 103171-5.
11. .000015 GOLD ON CONTACT AREA, MATTE TIN IN CRIMP AREA K, ALL OVER .000050 NICKEL.
12. .000030 GOLD ON CONTACT AREA, MATTE TIN IN CRIMP AREA K, ALL OVER .000050 NICKEL.
13. OBSOLETE PARTS: OBSOLETE CIS STREAMLINING PER D.RENAUD/D.SINISI

5-103171-5	12 6	5-103171-4
13 5-103171-2	11 6	5-103171-1
9 -8	6 7	9 -7
103171-5	5 6	103171-4
103171-2	4 6	103171-1
LOOSE PIECE PART NO	FINISH	PART NUMBER

THIS DRAWING IS A CONTROLLED DOCUMENT.		DWN	31 MAR 83	STE TE Connectivity	
DIMENSIONS: INCHES		CHK	-		
TOLERANCES UNLESS OTHERWISE SPECIFIED:		APVD	11 APR 83	NAME	
0 PLC ± -		PRODUCT SPEC	-	CONTACT, RECEPTACLE, MOD IV 1/2 CRIMP SNAP-IN FOR 22-26 AWG WIRE	
1 PLC ± -		APPLICATION SPEC	-	SIZE	CAGE CODE
2 PLC ± -		FINISH	SEE TABLE	A2	00779
3 PLC ± .005		MATERIAL	CU-SN-P ALLOY 521 .008 THK. COML.	DRAWING NO	C=103171
4 PLC ± -		WEIGHT	-	RESTRICTED TO	-
ANGLES ± -		CUSTOMER DRAWING	SCALE 8:1	SHEET 1 of 1	REV J2

X-ON Electronics

Largest Supplier of Electrical and Electronic Components

Click to view similar products for [Headers & Wire Housings](#) category:

Click to view products by [TE Connectivity](#) manufacturer:

Other Similar products are found below :

[892-18-020-10-001101](#) [58102-G61-06LF](#) [582553-1](#) [0009485154](#) [009176003701906](#) [0050291907](#) [LY20-4P-DT1-P1E-BR](#) [02.125.8002.8](#)
[609-3404](#) [61062-3](#) [61082-181009](#) [622-3653LF](#) [63453-116](#) [636-1030](#) [636-1427](#) [636-3427](#) [636-4007](#) [641938-9](#) [641991-4](#) [644827-2](#) [65817-010LF](#) [65817-015LF](#) [65863-015LF](#) [66207-023LF](#) [67095-007LF](#) [67601157](#) [68645-018](#) [68648-049](#) [70.362.1628.0](#) [70-4210](#) [70-4226B](#) [70-4853B](#) [707-5020](#) [707-5028](#) [71.350.2428.0](#) [71918-208LF](#) [71961-016LF](#) [733-134](#) [733-162](#) [754199-000](#) [760-3052](#) [787-8014-00](#) [79531-3000](#)
[FCN-360C032-B](#) [FCN-367T-T012/H](#) [FCN-723D010/2](#) [80.063.4001.1](#) [800-90-001-10-001000](#) [800-90-010-10-002000](#) [801-43-002-10-013000](#)