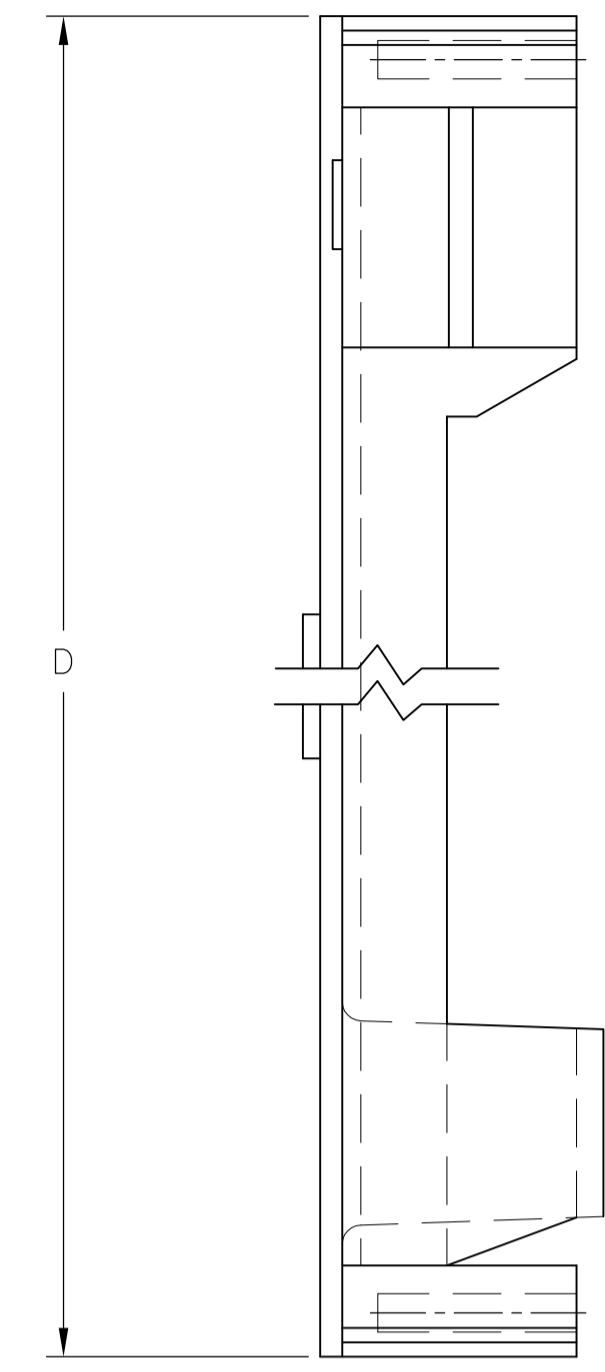
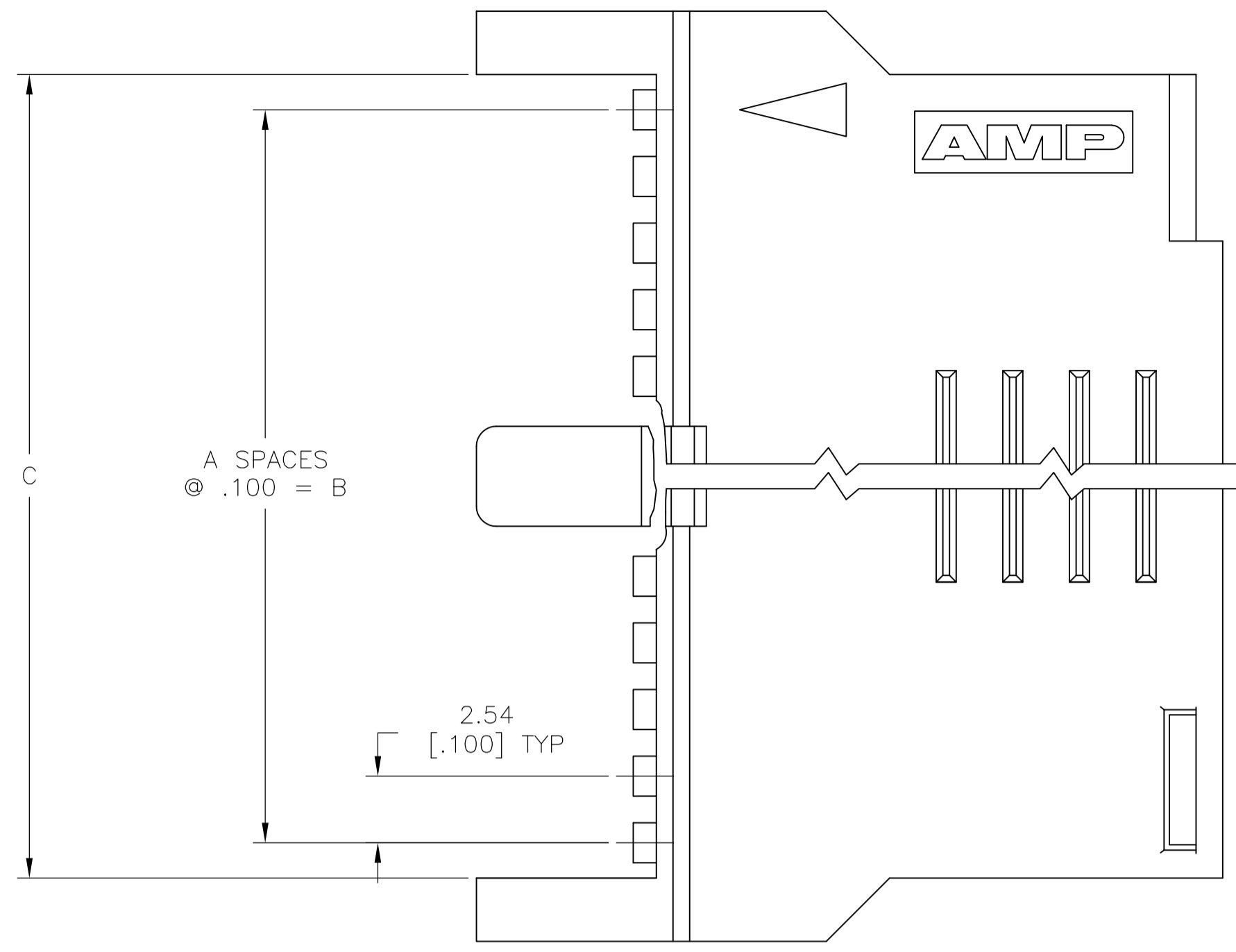
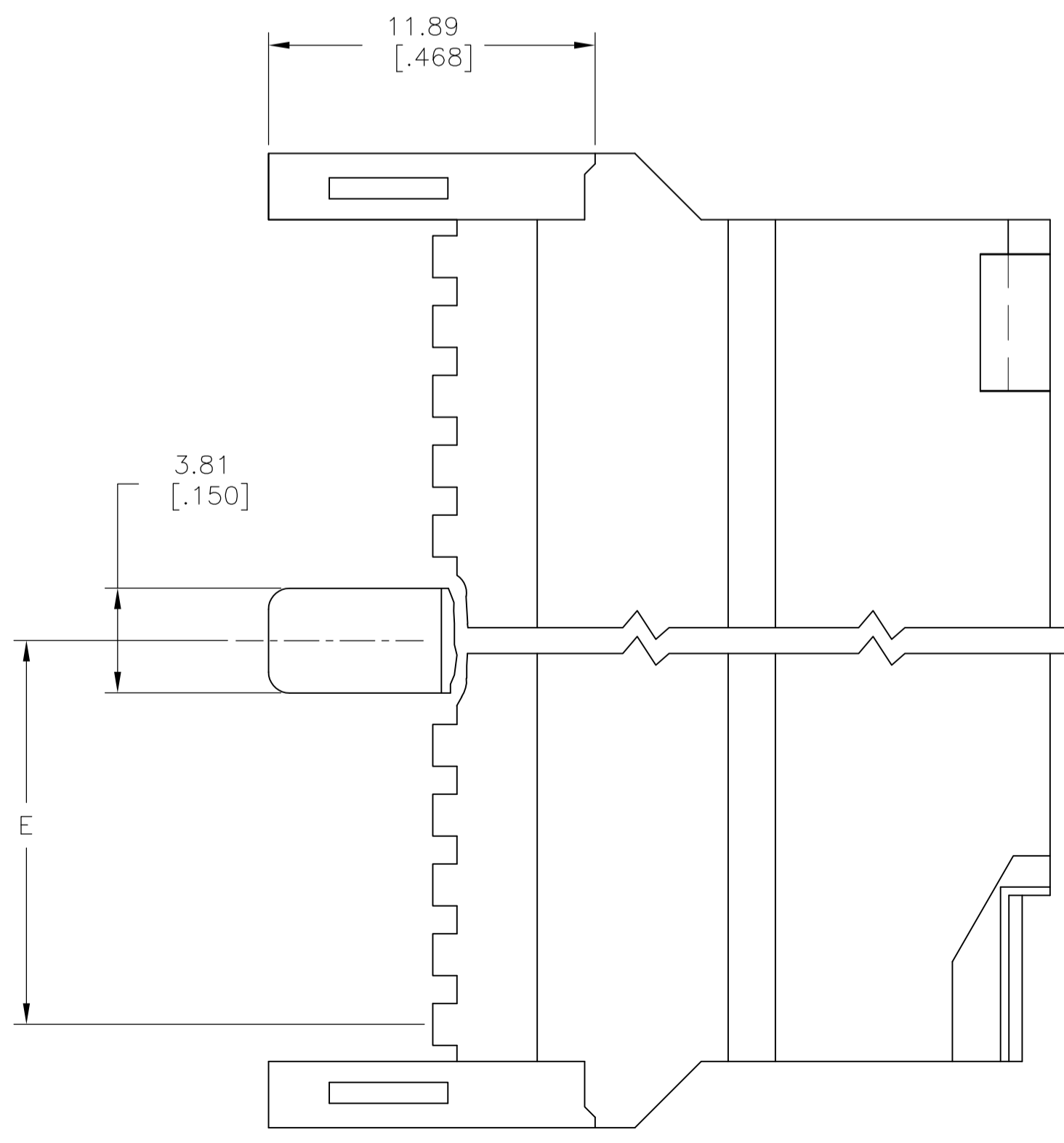
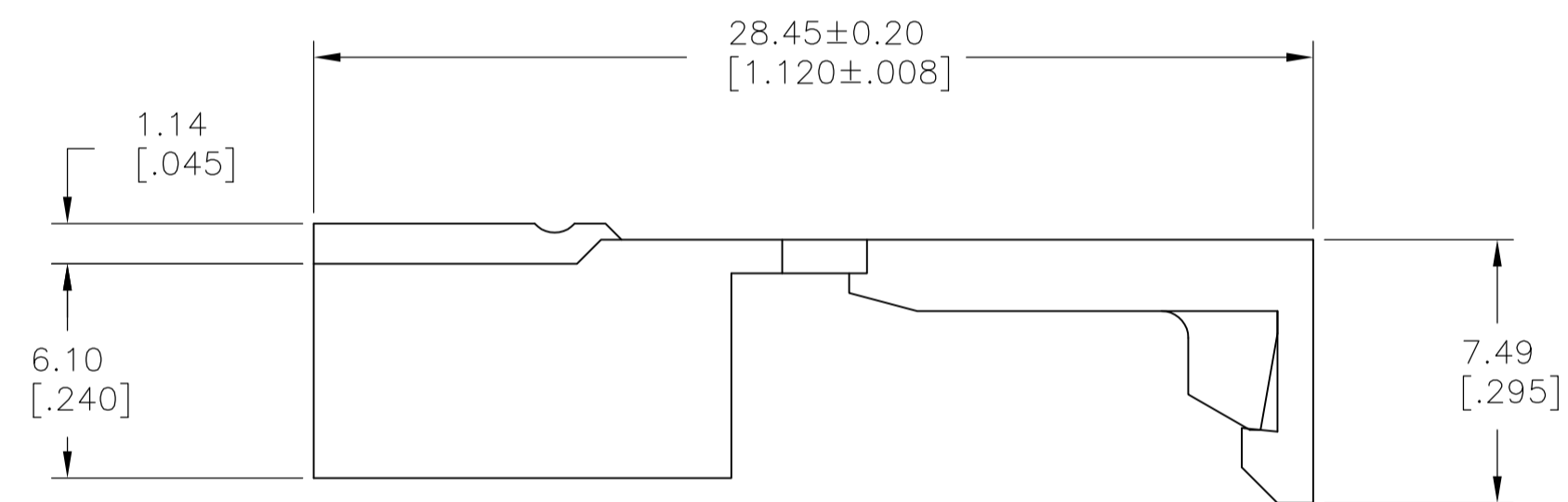


LOC		DIST		REVISIONS			
AD	39	REV	DATE	BY	CHK	APPV	
D		REDRAWN PER ECO-09-004892	06MAR09	HMR	JG		
D1		REVISED PER ECO-09-020932	25AUG09	KK	AEG		



- 1 NO CENTER BAR ON THIS PART.
- 2 THIS COVER TO BE USED WITH PART NO. 102396
- 3 OBSOLETE PART NUMBER
- 4 MATERIAL: FLAME RETARDANT THERMOPLASTIC, COLOR: BLACK
- 5 OBSOLETE PARTS: OBSOLETE CIS STREAMLINING PER D.RENAUD/D.SINISI



	39.37[1.550]	86.26[3.396]	81.43[3.206]	78.74[3.100]	31	64	1-103268-5
	36.83[1.450]	81.18[3.196]	76.35[3.006]	73.66[2.900]	29	60	1-103268-4
5	OBSOLETE 30.48[1.200]	68.48[2.696]	63.65[2.506]	60.96[2.400]	24	50	1-103268-3
	26.67[1.050]	60.85[2.396]	56.03[2.206]	53.34[2.100]	21	44	1-103268-2
	OBSOLETE 24.13[.950]	55.78[2.196]	50.95[2.006]	48.26[1.900]	19	40	1-103268-1
5	OBSOLETE 20.32[.800]	48.15[1.896]	43.33[1.706]	40.64[1.600]	16	34	1-103268-0
5	OBSOLETE 17.78[.700]	43.07[1.696]	38.25[1.506]	35.56[1.400]	14	30	103268-9
5	OBSOLETE 15.24[.600]	37.99[1.496]	33.17[1.306]	30.48[1.200]	12	26	103268-8
5	OBSOLETE 13.97[.550]	35.45[1.396]	30.63[1.206]	27.94[1.100]	11	24	103268-7
	11.43[.450]	30.38[1.196]	25.55[1.006]	22.86[.900]	9	20	103268-6
	8.89[.350]	25.29[.996]	20.47[.806]	17.78[.700]	7	16	103268-5
	7.62[.300]	22.76[.896]	17.93[.706]	15.24[.600]	6	14	103268-4
	6.35[.250]	20.22[.796]	15.39[.606]	12.70[.500]	5	12	103268-3
	5.08[.200]	17.68[.696]	12.85[.506]	10.16[.400]	4	10	103268-2
	1	15.14[.596]	10.31[.406]	7.62[.300]	3	8	103268-1
	E	D	C	B	A	NO OF POSN	PART NUMBER

THIS DRAWING IS A CONTROLLED DOCUMENT.

DIMENSIONS: mm [INCHES]

TOLERANCES UNLESS OTHERWISE SPECIFIED:

0. PLC	± .005
1. PLC	± .005
2. PLC	± .005
3. PLC	± .005
4. PLC	± .005
ANGLES	± .1°

MATERIAL: 4 FINISH: -

THIS DRAWING IS A CONTROLLED DOCUMENT. DWN: RAGHAVENDRA, CHK: JEFFREY GESFORD, APVD: JEFFREY GESFORD. Tyco Electronics Corporation, Harrisburg, PA 17105-3608.

NAME: COVER - HALF, MASS TERMINATION, AMPMODU, DOUBLE ROW, .100 X .100 C/L WITH CENTER BAR POLARIZATION FOR EJECT HEADER.

SIZE: A1, CAGE CODE: 00779, DRAWING NO: 103268, WEIGHT: -.

CUSTOMER DRAWING, SCALE: 4:1, SHEET: 1 OF 1, REV: D1

X-ON Electronics

Largest Supplier of Electrical and Electronic Components

Click to view similar products for [Headers & Wire Housings](#) category:

Click to view products by [TE Connectivity](#) manufacturer:

Other Similar products are found below :

[892-18-020-10-001101](#) [58102-G61-06LF](#) [582553-1](#) [0009485154](#) [009176003701906](#) [0050291907](#) [LY20-4P-DT1-P1E-BR](#) [02.125.8002.8](#)
[609-3404](#) [61062-3](#) [61082-181009](#) [622-3653LF](#) [63453-116](#) [636-1030](#) [636-1427](#) [636-3427](#) [636-4007](#) [641938-9](#) [641991-4](#) [644827-2](#) [65817-010LF](#) [65817-015LF](#) [65863-015LF](#) [66207-023LF](#) [67095-007LF](#) [67601157](#) [68645-018](#) [68648-049](#) [70.362.1628.0](#) [70-4210](#) [70-4226B](#) [70-4853B](#) [707-5020](#) [707-5028](#) [71.350.2428.0](#) [71918-208LF](#) [71961-016LF](#) [733-134](#) [733-162](#) [754199-000](#) [760-3052](#) [787-8014-00](#) [79531-3000](#)
[FCN-360C032-B](#) [FCN-367T-T012/H](#) [FCN-723D010/2](#) [80.063.4001.1](#) [800-90-001-10-001000](#) [800-90-010-10-002000](#) [801-43-002-10-013000](#)