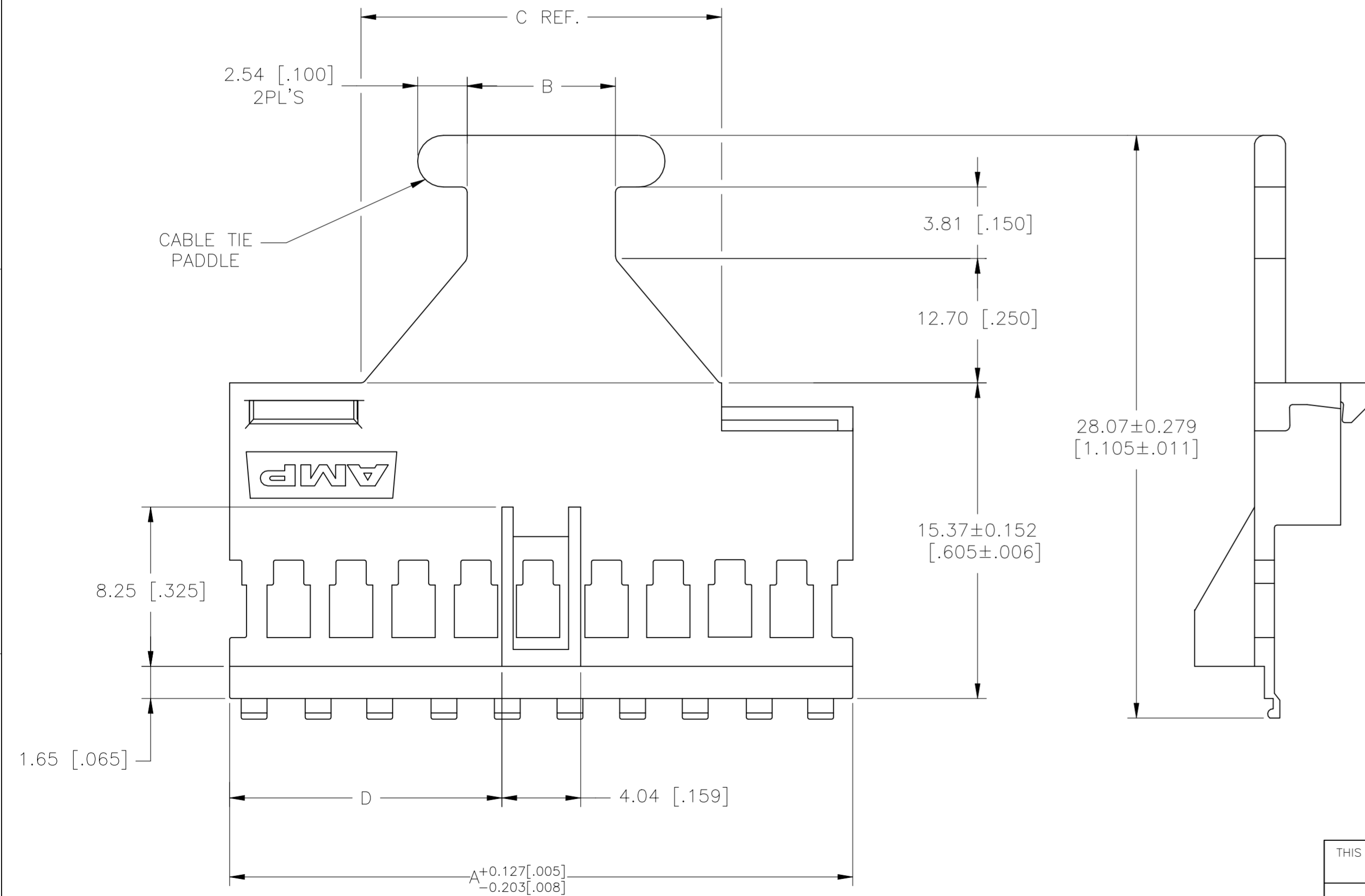
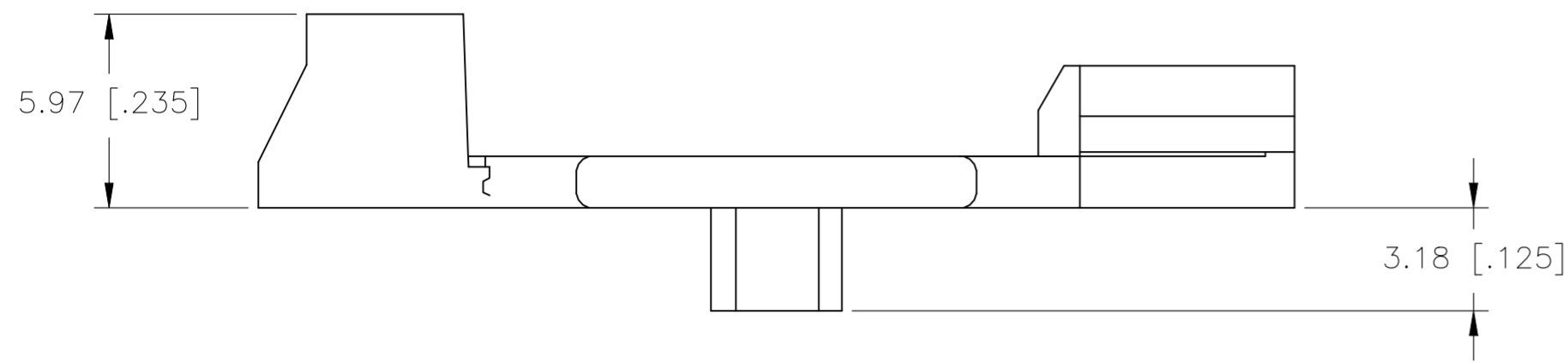


REVISIONS					
P	LTR	DESCRIPTION	DATE	DWN	APVD
B		ECR-20-017460	22DEC2020	KR	JO

NOTES:

- 1 THIS COVER IS TO BE USED WITH A DOUBLE ROW HOUSING. NUMBER OF POSITIONS INDICATED PERTAINS TO THE HOUSING.
- 2 OBSOLETE PART NUMBER.
- 3 FLAME RETARDANT NYLON, UL 94 V-0, BLACK.



26.44 [1.041]	33.32 [1.312]	15.24 [.600]	56.92 [2.241]	36	103350-6
13.78 [.541]	15.04 [.592]	7.62 [.300]	31.52 [1.241]	20	103350-5
4.22 [.166]	7.24 [.285]	3.81 [.150]	12.47 [.491]	8	103350-4
29.62 [1.166]	46.23 [1.820]	19.05 [.750]	63.27 [2.491]	40	103350-3
23.27 [.916]	33.32 [1.312]	15.24 [.600]	50.57 [1.991]	32	103350-2
10.57 [.416]	15.04 [.592]	7.62 [.300]	25.17 [.991]	16	103350-1
D	C REF.	B	A	NO. OF POSITIONS	PART NO.
COVER DIMENSIONS				1	

THIS DRAWING IS A CONTROLLED DOCUMENT.		DWN	G.DOUTY	07may1983																			
DIMENSIONS: mm [INCHES]		CHK	J.STARAN	10oct1983																			
TOLERANCES UNLESS OTHERWISE SPECIFIED:		APVD	J.STARAN	10oct1983																			
<table border="0"> <tr><td>0 PLC</td><td>±</td><td>-</td></tr> <tr><td>1 PLC</td><td>±</td><td>-</td></tr> <tr><td>2 PLC</td><td>±</td><td>0.13 [.005]</td></tr> <tr><td>3 PLC</td><td>±</td><td>-</td></tr> <tr><td>4 PLC</td><td>±</td><td>-</td></tr> <tr><td>ANGLES</td><td>±</td><td>-</td></tr> </table>		0 PLC	±	-		1 PLC	±	-	2 PLC	±	0.13 [.005]	3 PLC	±	-	4 PLC	±	-	ANGLES	±	-	PRODUCT SPEC	-	NAME
0 PLC	±	-																					
1 PLC	±	-																					
2 PLC	±	0.13 [.005]																					
3 PLC	±	-																					
4 PLC	±	-																					
ANGLES	±	-																					
MATERIAL	3	FINISH	-	WEIGHT	-																		
CUSTOMER DRAWING		SCALE	NTS	SHEET	1 of 1																		
		REV	B																				

X-ON Electronics

Largest Supplier of Electrical and Electronic Components

Click to view similar products for [Headers & Wire Housings](#) category:

Click to view products by [TE Connectivity](#) manufacturer:

Other Similar products are found below :

[892-18-020-10-001101](#) [58102-G61-06LF](#) [582553-1](#) [0009485154](#) [009176003701906](#) [0050291907](#) [LY20-4P-DT1-P1E-BR](#) [02.125.8002.8](#)
[609-3404](#) [61062-3](#) [61082-181009](#) [622-3653LF](#) [63453-116](#) [636-1030](#) [636-1427](#) [636-3427](#) [636-4007](#) [641938-9](#) [641991-4](#) [644827-2](#) [65817-](#)
[010LF](#) [65817-015LF](#) [65863-015LF](#) [66207-023LF](#) [67095-007LF](#) [67601157](#) [68645-018](#) [68648-049](#) [70.362.1628.0](#) [70-4210](#) [70-4226B](#) [70-](#)
[4853B](#) [707-5020](#) [707-5028](#) [71.350.2428.0](#) [71918-208LF](#) [71961-016LF](#) [733-134](#) [733-162](#) [754199-000](#) [760-3052](#) [79531-3000](#) [FCN-](#)
[360C032-B](#) [FCN-367T-T012/H](#) [FCN-723D010/2](#) [80.063.4001.1](#) [800-90-010-10-002000](#) [801-43-002-10-013000](#) [801-43-006-10-002000](#)
[801-93-011-10-001000](#)