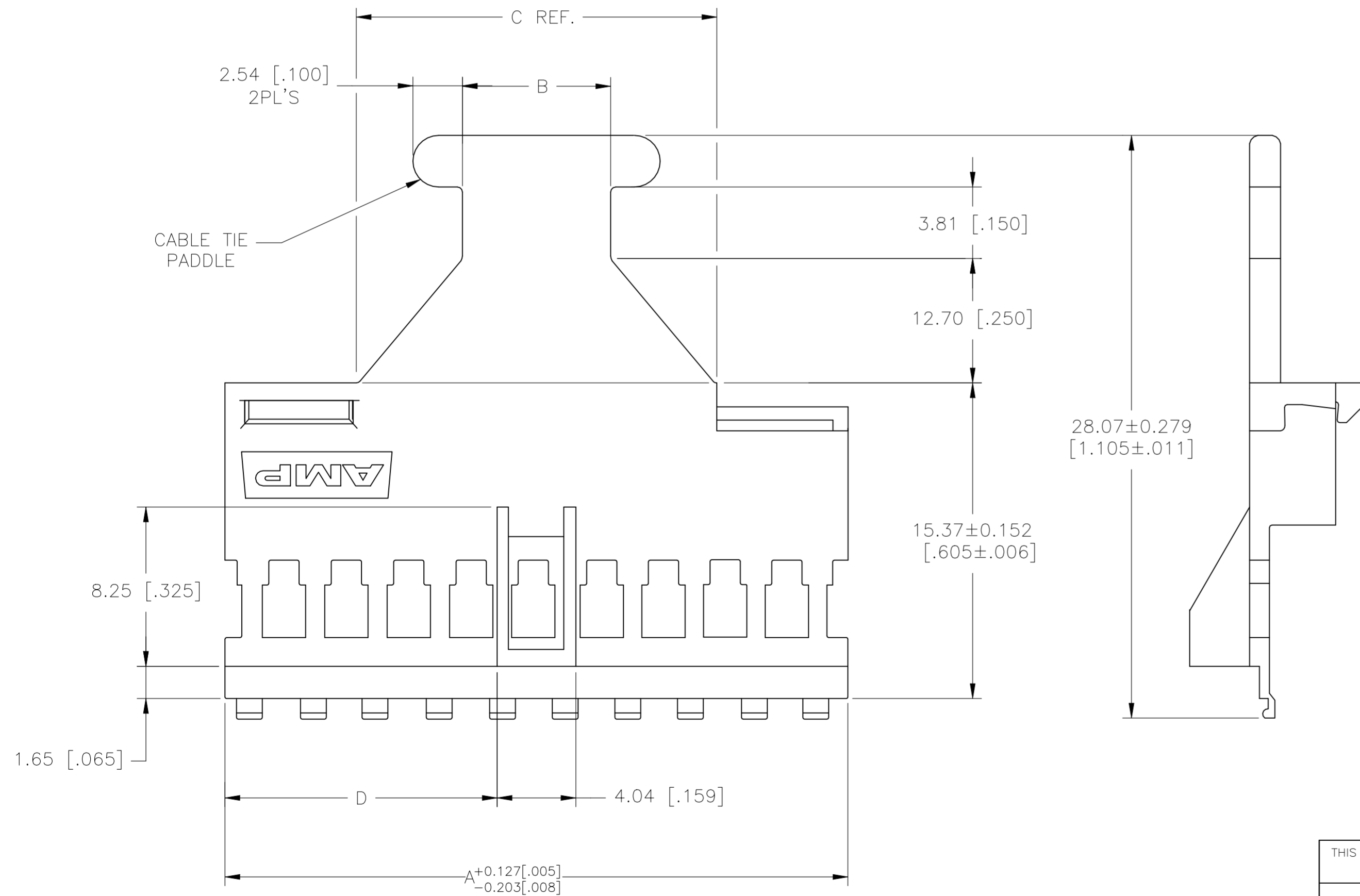
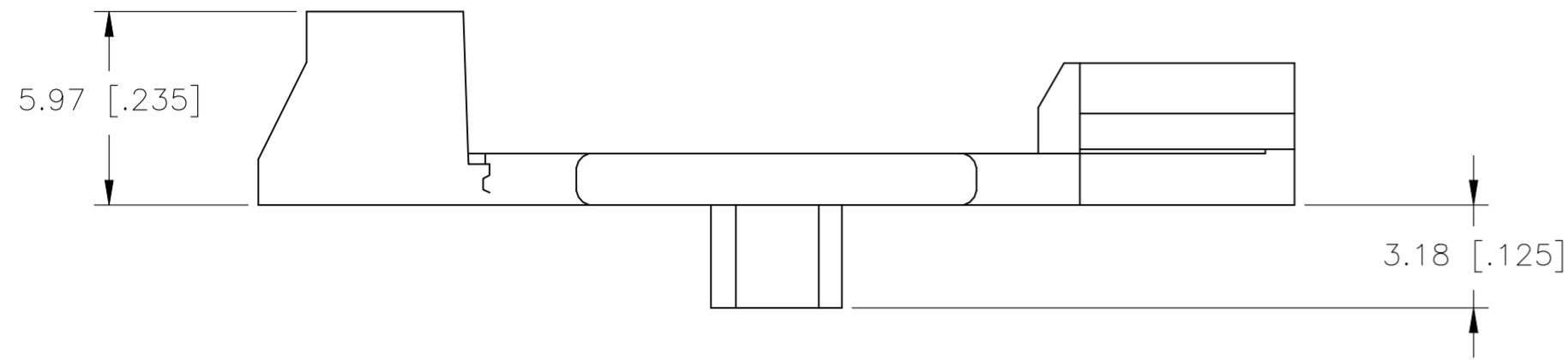


| REVISIONS | | | | | |
|-----------|-----|---------------|-----------|-----|------|
| P | LTR | DESCRIPTION | DATE | DWN | APVD |
| B | | ECR-20-017460 | 22DEC2020 | KR | JO |

NOTES:

- 1 THIS COVER IS TO BE USED WITH A DOUBLE ROW HOUSING. NUMBER OF POSITIONS INDICATED PERTAINS TO THE HOUSING.
- 2 OBSOLETE PART NUMBER.
- 3 FLAME RETARDANT NYLON, UL 94 V-0, BLACK.



| | | | | | |
|------------------|---------------|--------------|---------------|------------------|----------|
| 26.44 [1.041] | 33.32 [1.312] | 15.24 [.600] | 56.92 [2.241] | 36 | 103350-6 |
| 13.78 [.541] | 15.04 [.592] | 7.62 [.300] | 31.52 [1.241] | 20 | 103350-5 |
| 4.22 [.166] | 7.24 [.285] | 3.81 [.150] | 12.47 [.491] | 8 | 103350-4 |
| 29.62 [1.166] | 46.23 [1.820] | 19.05 [.750] | 63.27 [2.491] | 40 | 103350-3 |
| 23.27 [.916] | 33.32 [1.312] | 15.24 [.600] | 50.57 [1.991] | 32 | 103350-2 |
| 10.57 [.416] | 15.04 [.592] | 7.62 [.300] | 25.17 [.991] | 16 | 103350-1 |
| D | C REF. | B | A | NO. OF POSITIONS | PART NO. |
| COVER DIMENSIONS | | | | 1 | |

| | | | | | |
|--|--|------------------|----------|-----------|--|
| THIS DRAWING IS A CONTROLLED DOCUMENT. | | DWN | G.DOUTY | 07may1983 | |
| DIMENSIONS: mm [INCHES] | | CHK | J.STARAN | 10oct1983 | |
| TOLERANCES UNLESS OTHERWISE SPECIFIED: | | APVD | J.STARAN | 10oct1983 | NAME COVER, LEVEL V, .125 CENTER-LINE WITH WIDE CABLE TIE PADDLE & POLARIZATION |
| 0 PLC ± - | | PRODUCT SPEC | | | |
| 1 PLC ± - | | APPLICATION SPEC | | | SIZE A2 |
| 2 PLC ± 0.13 [.005] | | WEIGHT | - | | |
| 3 PLC ± - | | SCALE | NTS | | SHEET 1 of 1 |
| 4 PLC ± - | | CUSTOMER DRAWING | | | |
| ANGLES ± - | | FINISH | - | | REV B |
| MATERIAL | | FINISH | - | | |
| 3 | | | | | |

X-ON Electronics

Largest Supplier of Electrical and Electronic Components

Click to view similar products for [Headers & Wire Housings](#) category:

Click to view products by [TE Connectivity](#) manufacturer:

Other Similar products are found below :

[95000-104TRLF](#) [10135584-644402LF](#) [DF62W-EP2022PCA](#) [95000-106TRLF](#) [DF62W-2022SCA](#) [DF62W-EP2022PC](#) [2203348](#) [DF62W-2022SC](#) [1084018](#) [1029039](#) [1084017](#) [802-10-012-10-002000](#) [1112640](#) [1112639](#) [000-34000](#) [0009482033](#) [0009507031](#) [57102-S06-03LF](#) [57202-S52-04LF](#) [PCN6-15S-2.5E](#) [0039019024](#) [58102-G61-06LF](#) [582553-1](#) [0009508121](#) [0050291907](#) [018731A](#) [LY20-4P-DT1-P1E-BR](#) [02.125.8002.8](#) [60101931](#) [60598-1 \(Cut Strip\)](#) [M1625-3R/100](#) [61062-3](#) [61082-181009](#) [636-1427](#) [638009-1](#) [641938-9](#) [641991-4](#) [644168-1](#) [647662-1](#) [65039-019ELF](#) [65817-002LF](#) [65817-015LF](#) [65863-015LF](#) [66207-023LF](#) [67016-026LF](#) [67046-001LF](#) [67095-007LF](#) [68002-116](#) [68016-236H](#) [68648-049](#)