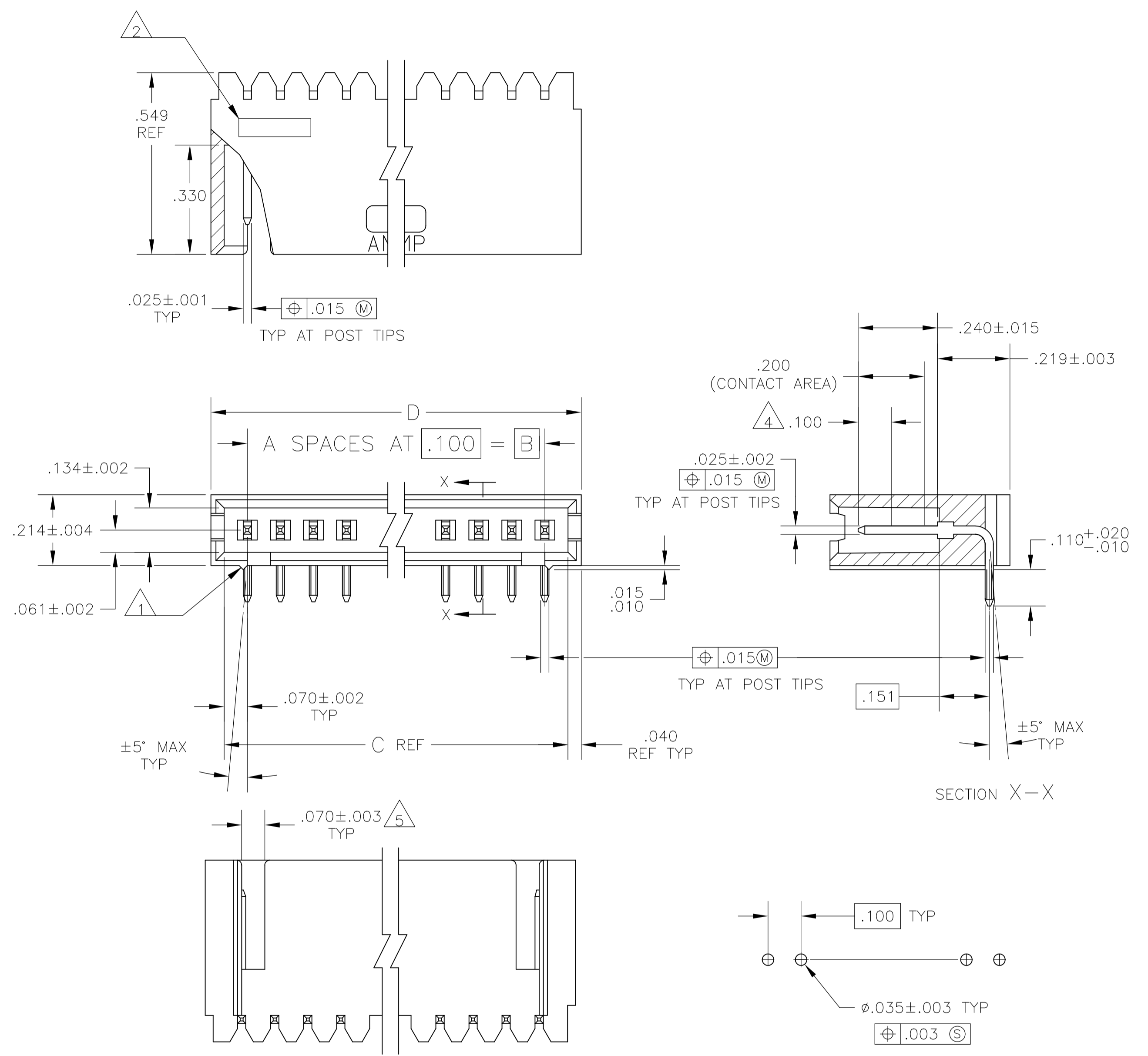


REVISIONS				
P	LTR	DESCRIPTION	DATE	APP'D
N3		PART STATUS UPDATED IN PART LIST TABLE	16FEB2018	SD PS



RECOMMENDED HOLE LAYOUT

- 1 STANDOFFS:
3 TRHU 9 POSN - (2 REQD) ON OUTSIDE ENDS OF HOUSING
10 THRU 18 POSN - (3 REQD) TWO ON OUTSIDE ENDS AND ONE CENTERED ON HOUSING
19 POSN AND LARGER - (4 REQD) TWO ON OUTSIDE ENDS AND TWO EVENLY SPACED WITHIN REMAINING LENGTH OF HOUSING
- 2 RECESSED DATE CODE
- 3 .000030 GOLD IN CONTACT AREA, .000100-.000200 MATTE TIN-LEAD IN SOLDER AREA, ALL OVER .000050 MIN NICKEL
- 4 POINT OF MEASUREMENT FOR GOLD PLATING THICKNESS
- 5 FOR 3 POS ONLY, ONE SLOT .215 WIDE.
- 6 .000030 GOLD IN CONTACT AREA, .000100-.000200 MATTE TIN IN SOLDER AREA, ALL OVER .000050 MIN NICKEL
- 7 OBSOLETE PARTS: OBSOLETE CIS STREAMLINING PER D.RENAUD/D.SINISI

△ OBSOLETE	△	2.620	2.540	2.400	24	25	-7-103361-3
△	△	2.520	2.440	2.300	23	24	7-103361-2
△ OBSOLETE	△	2.420	2.340	2.200	22	23	-7-103361-1
△	△	2.320	2.240	2.100	21	22	-7-103361-0
△	△	2.220	2.140	2.000	20	21	-6-103361-9
△	△	2.120	2.040	1.900	19	20	6-103361-8
△ OBSOLETE	△	2.020	1.940	1.800	18	19	-6-103361-7
△	△	1.920	1.840	1.700	17	18	-6-103361-6
△	△	1.820	1.740	1.600	16	17	-6-103361-5
△	△	1.720	1.640	1.500	15	16	6-103361-4
△ OBSOLETE	△	1.620	1.540	1.400	14	15	-6-103361-3
△	△	1.520	1.440	1.300	13	14	6-103361-2
△ OBSOLETE	△	1.420	1.340	1.200	12	13	-6-103361-1
△	△	1.320	1.240	1.100	11	12	6-103361-0
△ OBSOLETE	△	1.220	1.140	1.000	10	11	-5-103361-9
△	△	1.120	1.040	.900	9	10	5-103361-8
△	△	1.020	.940	.800	8	9	5-103361-7
△	△	.920	.840	.700	7	8	5-103361-6
△	△	.820	.740	.600	6	7	5-103361-5
△	△	.720	.640	.500	5	6	5-103361-4
△	△	.620	.540	.400	4	5	5-103361-3
△	△	.520	.440	.300	3	4	5-103361-2
△	△	.420	.340	.200	2	3	5-103361-1
△ OBSOLETE	△	3.720	3.640	3.500	35	36	3-103361-4
△	△	3.620	3.540	3.400	34	35	3-103361-3
△	△	3.520	3.440	3.300	33	34	3-103361-2
△	△	3.420	3.340	3.200	32	33	3-103361-1
△	△	3.320	3.240	3.100	31	32	3-103361-0
△ OBSOLETE	△	3.220	3.140	3.000	30	31	2-103361-9
△	△	3.120	3.040	2.900	29	30	2-103361-8
△	△	3.020	2.940	2.800	28	29	2-103361-7
△	△	2.920	2.840	2.700	27	28	2-103361-6
△	△	2.820	2.740	2.600	26	27	2-103361-5
△	△	2.720	2.640	2.500	25	26	2-103361-4
△	△	2.620	2.540	2.400	24	25	2-103361-3
△	△	2.520	2.440	2.300	23	24	2-103361-2
△ OBSOLETE	△	2.420	2.340	2.200	22	23	-2-103361-1
△	△	2.320	2.240	2.100	21	22	-2-103361-0
△	△	2.220	2.140	2.000	20	21	-1-103361-9
△	△	2.120	2.040	1.900	19	20	1-103361-8
△ OBSOLETE	△	2.020	1.940	1.800	18	19	-1-103361-7
△	△	1.920	1.840	1.700	17	18	-1-103361-6
△	△	1.820	1.740	1.600	16	17	-1-103361-5
△	△	1.720	1.640	1.500	15	16	1-103361-4
△ OBSOLETE	△	1.620	1.540	1.400	14	15	-1-103361-3
△	△	1.520	1.440	1.300	13	14	1-103361-2
△	△	1.420	1.340	1.200	12	13	1-103361-1
△	△	1.320	1.240	1.100	11	12	1-103361-0
△ OBSOLETE	△	1.220	1.140	1.000	10	11	-103361-9
△	△	1.120	1.040	.900	9	10	103361-8
△	△	1.020	.940	.800	8	9	103361-7
△	△	.920	.840	.700	7	8	103361-6
△	△	.820	.740	.600	6	7	103361-5
△	△	.720	.640	.500	5	6	103361-4
△	△	.620	.540	.400	4	5	103361-3
△	△	.520	.440	.300	3	4	103361-2
△	△	.420	.340	.200	2	3	103361-1

PLATING	D	C	B	A	NO. OF POSN.	PART NO.

THIS DRAWING IS A CONTROLLED DOCUMENT. DWN S.A.SHUEY 28SEP89
DW H.MOLL 30CT89

STE TE Connectivity

APVD R.FLICKER 30CT89 NAME
PRODUCT SPEC
APPLICATION SPEC

HEATER ASSEMBLY, MOD II,
SINGLE ROW .100 CL, RIGHT ANGLE

MATERIAL HOUSING: FLAME RETARDANT THERMOPLASTIC COLOR: BLACK POSTS: PHOS BRONZE FINISH SEE TABLE WEIGHT -

SCALE 4:1 SHEET 1 OF 1 REV N3

CUSTOMER DRAWING A1 00779 C=103361 RESTRICTED TO

X-ON Electronics

Largest Supplier of Electrical and Electronic Components

Click to view similar products for [Headers & Wire Housings](#) category:

Click to view products by [TE Connectivity](#) manufacturer:

Other Similar products are found below :

[892-18-020-10-001101](#) [58102-G61-06LF](#) [582553-1](#) [0009485154](#) [009176003701906](#) [0050291907](#) [LY20-4P-DT1-P1E-BR](#) [02.125.8002.8](#)
[609-3404](#) [61062-3](#) [61082-181009](#) [622-3653LF](#) [63453-116](#) [636-1030](#) [636-1427](#) [636-3427](#) [636-4007](#) [641938-9](#) [641991-4](#) [644827-2](#) [65817-](#)
[010LF](#) [65817-015LF](#) [65863-015LF](#) [66207-023LF](#) [67095-007LF](#) [67601157](#) [68645-018](#) [68648-049](#) [70.362.1628.0](#) [70-4210](#) [70-4226B](#) [70-](#)
[4853B](#) [707-5020](#) [707-5028](#) [71.350.2428.0](#) [71918-208LF](#) [71961-016LF](#) [733-134](#) [733-162](#) [754199-000](#) [760-3052](#) [787-8014-00](#) [79531-3000](#)
[FCN-360C032-B](#) [FCN-367T-T012/H](#) [FCN-723D010/2](#) [80.063.4001.1](#) [800-90-001-10-001000](#) [800-90-010-10-002000](#) [801-43-002-10-013000](#)