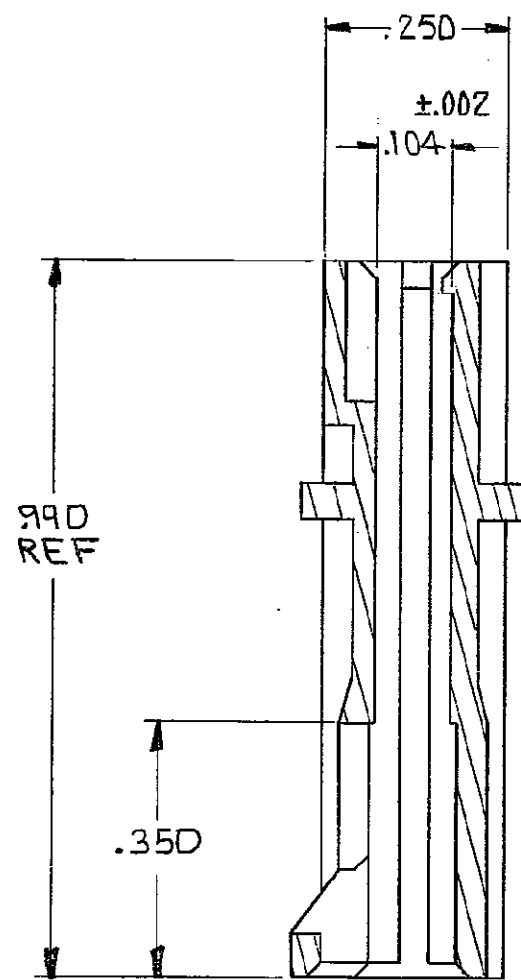
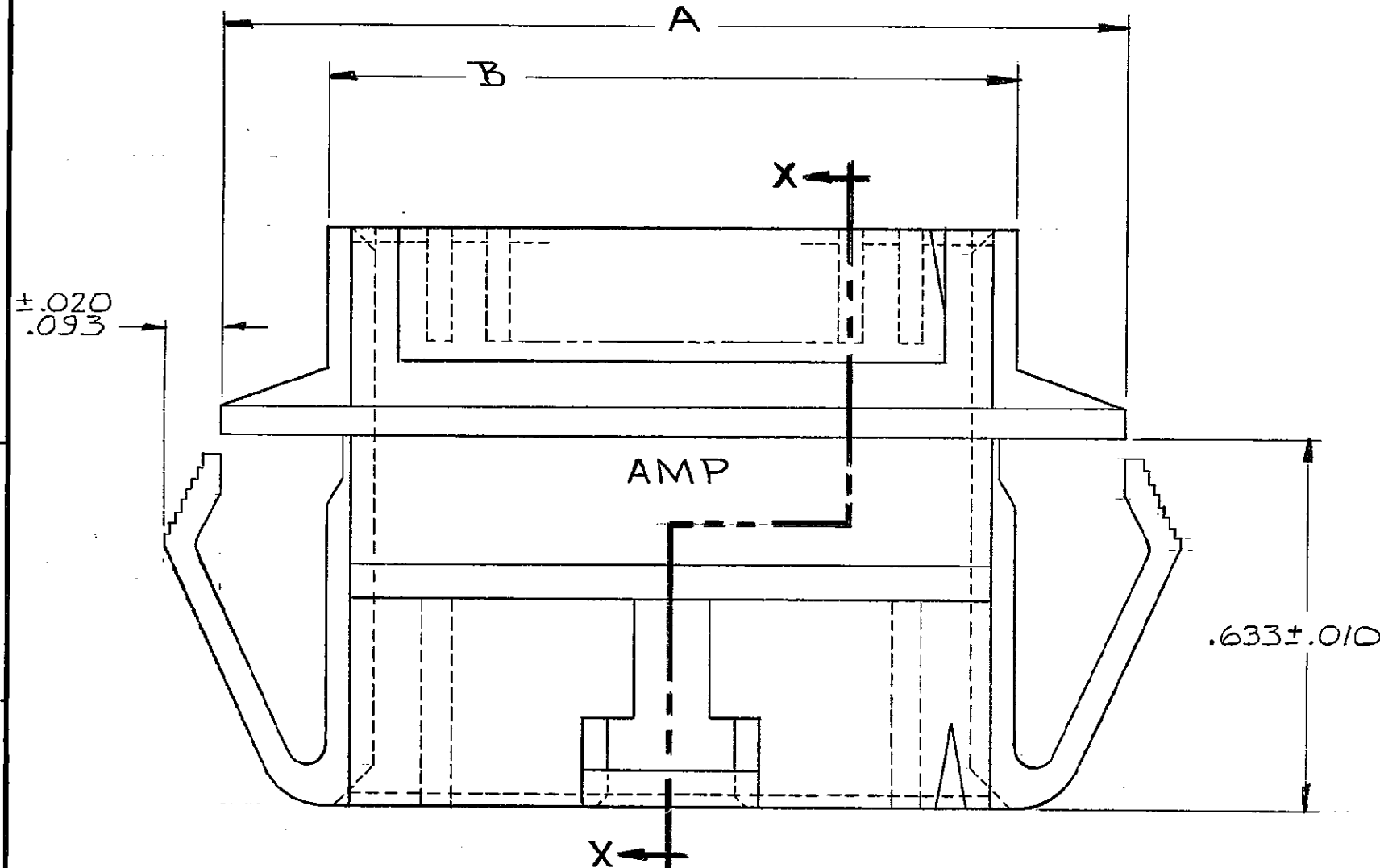


THIS DRAWING IS UNPUBLISHED. RELEASED FOR PUBLICATION

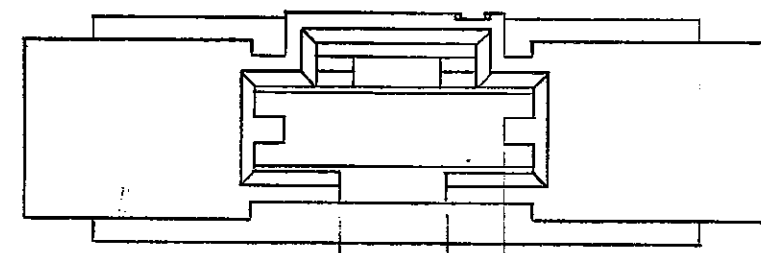
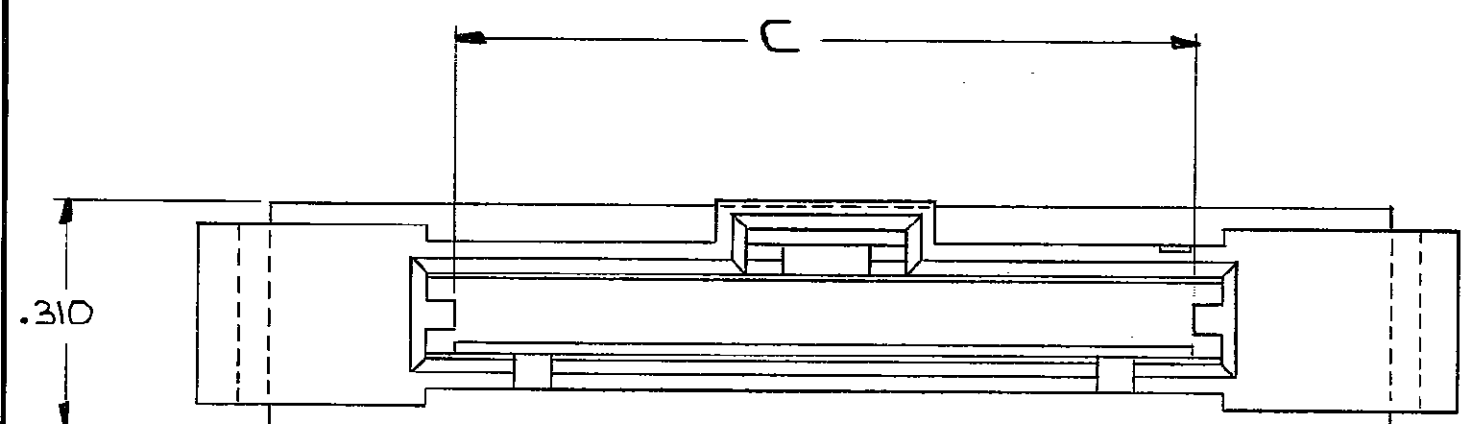
© COPYRIGHT

REVISIONS						
P	F	ZONE	LTR	DESCRIPTION	DATE	APPROVED
		G2		REVISED PER ECO-11-005140	30MAR11	HMR

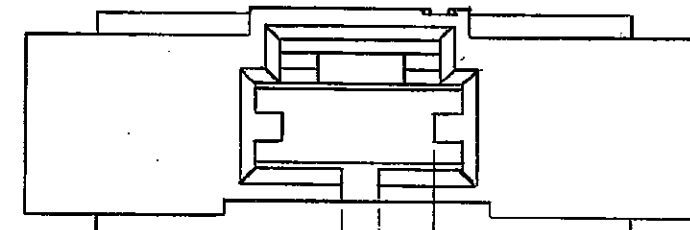


- 1. SHROUD ACCEPTS RIBBED PIN ASSEMBLIES
- 2. SHROUD MATES WITH LATCHING RECEPTACLE ASSEMBLIES
- 3. OBSOLETE PARTS: OBSOLETE CIS STREAMLINING PER D.RENAUD/D.SINISI

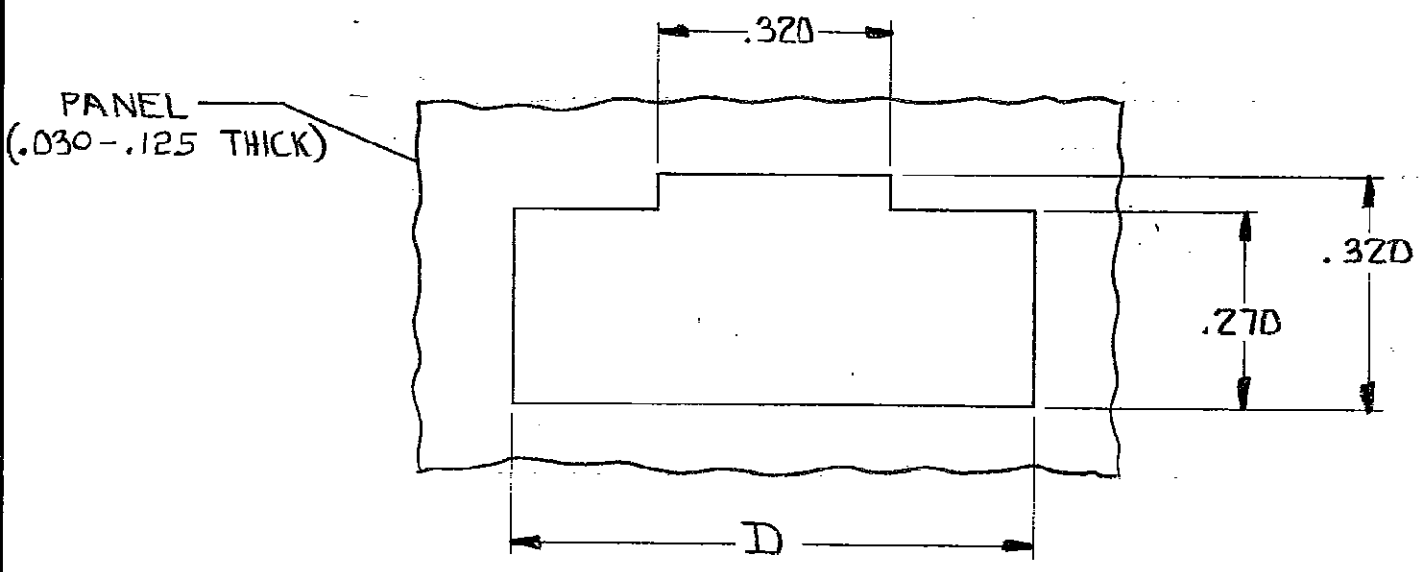
SECTION X-X



DETAIL FOR -2 ONLY (3 POSITION)



DETAIL FOR -1 ONLY (2 POSITION)



RECOMMENDED PANEL CUTOUT

	D	C	B	A	Nº OF POSITIONS	PART NO
3 OBSOLETE	2.925	2.505	2.665	3.035	25	2-103682-4
	2.825	2.405	2.565	2.935	24	2- -3
OBSOLETE	2.725	2.305	2.465	2.835	23	2- -2
3	2.625	2.205	2.365	2.735	22	2- -1
	2.525	2.105	2.265	2.635	21	2- -0
	2.425	2.005	2.165	2.535	20	1- -9
	2.325	1.905	2.065	2.435	19	1- -8
OBSOLETE	2.225	1.805	1.965	2.335	18	1- -7
3	2.125	1.705	1.865	2.235	17	1- -6
	2.025	1.605	1.765	2.135	16	1- -5
3 OBSOLETE	1.925	1.505	1.665	2.035	15	1- -4
	1.825	1.405	1.565	1.935	14	1- -3
	1.725	1.305	1.465	1.835	13	1- -2
	1.625	1.205	1.365	1.735	12	1- -1
3 OBSOLETE	1.525	1.105	1.265	1.635	11	1- -0
	1.425	1.005	1.165	1.535	10	-9
	1.325	.905	1.065	1.435	9	-8
	1.225	.805	.965	1.335	8	-7
	1.125	.705	.865	1.235	7	-6
	1.025	.605	.765	1.135	6	-5
	.925	.505	.665	1.035	5	-4
	.825	.405	.565	.935	4	-3
	.725	.305	.465	.835	3	-2
	.625	.205	.365	.735	2	103682-1

103682

UNLESS OTHERWISE SPECIFIED DIMENSIONS ARE IN INCHES. TOLERANCES ON: DECIMALS ±.005 ANGLES ±	CONTRACT NO			
	DR			5/23/85
	MATERIAL	BLACK THERMOPLASTIC	NAME	SHROUD, PIN, PANEL MOUNT, AMPMODU MTE, SINGLE RDIV, .100 Ø
	FINISH		SIZE	C
	OTHER APPD	OSGN APPD	FSCM NO	00779
			DRAWING NO	103682
			SCALE	
			SHEET	

X-ON Electronics

Largest Supplier of Electrical and Electronic Components

Click to view similar products for [Headers & Wire Housings](#) category:

Click to view products by [TE Connectivity](#) manufacturer:

Other Similar products are found below :

[892-18-020-10-001101](#) [58102-G61-06LF](#) [582553-1](#) [0009485154](#) [009176003701906](#) [0050291907](#) [LY20-4P-DT1-P1E-BR](#) [02.125.8002.8](#)
[609-3404](#) [61062-3](#) [61082-181009](#) [622-3653LF](#) [63453-116](#) [636-1030](#) [636-1427](#) [636-3427](#) [636-4007](#) [641938-9](#) [641991-4](#) [644827-2](#) [65817-](#)
[010LF](#) [65817-015LF](#) [65863-015LF](#) [66207-023LF](#) [67095-007LF](#) [67601157](#) [68645-018](#) [68648-049](#) [70.362.1628.0](#) [70-4210](#) [70-4226B](#) [70-](#)
[4853B](#) [707-5020](#) [707-5028](#) [71.350.2428.0](#) [71918-208LF](#) [71961-016LF](#) [733-134](#) [733-162](#) [754199-000](#) [760-3052](#) [787-8014-00](#) [79531-3000](#)
[FCN-360C032-B](#) [FCN-367T-T012/H](#) [FCN-723D010/2](#) [80.063.4001.1](#) [800-90-001-10-001000](#) [800-90-010-10-002000](#) [801-43-002-10-013000](#)