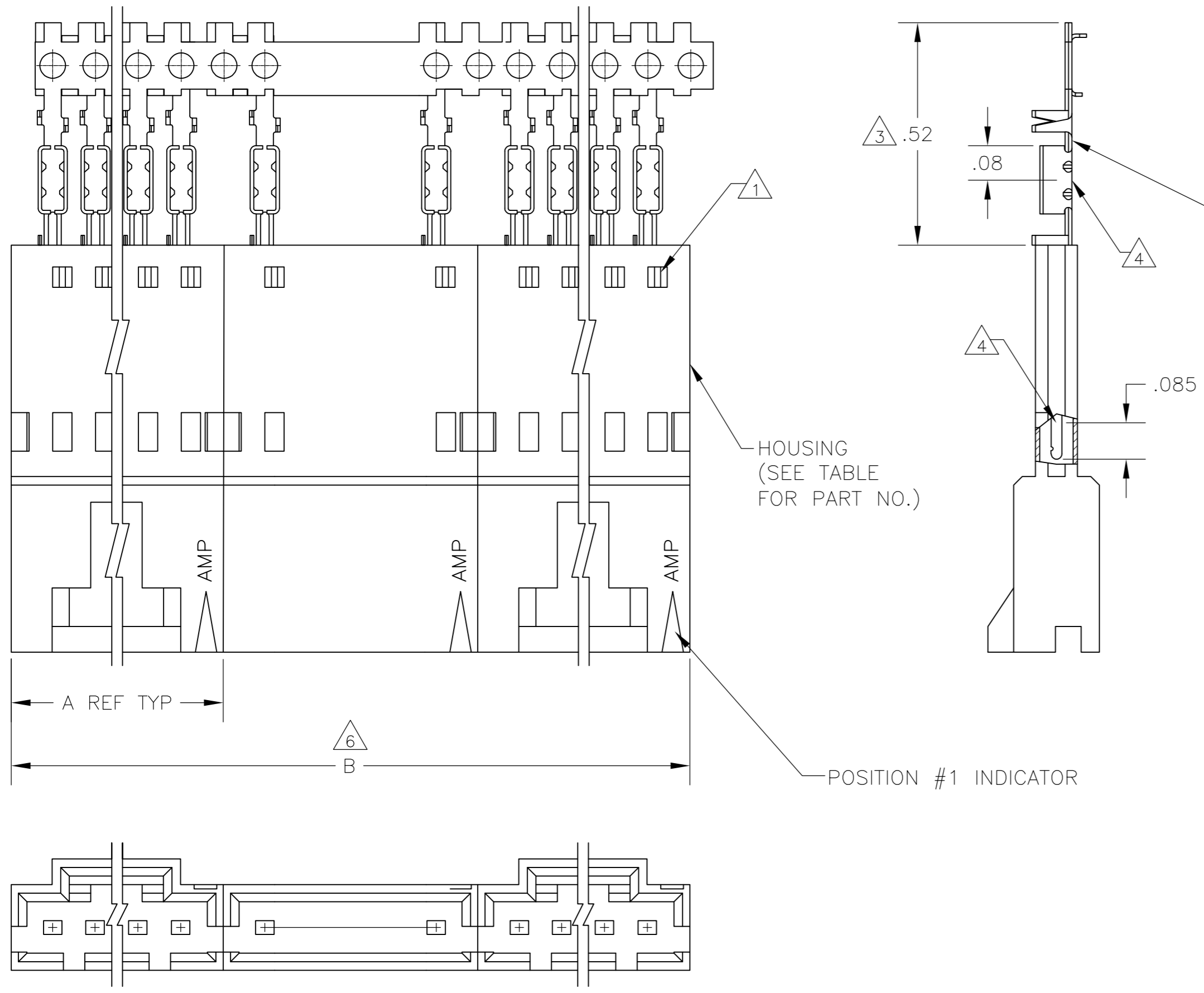


THIS DRAWING IS UNPUBLISHED. RELEASED FOR PUBLICATION
 © COPYRIGHT - By - ALL RIGHTS RESERVED.

LOC		DIST		REVISIONS					
AD		00		P	LTR	DESCRIPTION	DATE	DWN	APVD
				M2		REVISED PER ECO-11-004587	11MAR11	RK	HMR



CONTACT IDENTIFICATION LETTER "D" (LOCATED IN THIS AREA)

HOUSING (SEE TABLE FOR PART NO.)

POSITION #1 INDICATOR

11	2	2.59	1.295	1-103653-1	12	6-103945-1
11	2	2.39	1.195	1-103653-0	11	6-103945-0
11	2	2.19	1.095	103653-9	10	5-103945-9
11	2	1.99	.995	103653-8	9	5-103945-8
11	2	1.79	.895	103653-7	8	5-103945-7
11	3	2.39	.795	103653-6	7	5-103945-6
11	2	1.39	.695	103653-5	6	5-103945-5
11	4	2.38	.595	103653-4	5	5-103945-4
11	4	1.98	.495	103653-3	4	5-103945-3
11	5	1.98	.395	103653-2	3	5-103945-2
11	8	2.36	.295	103653-1	2	5-103945-1
10	4	1.98	.495	103653-3	4	1-103945-7
10	5	1.98	.395	103653-2	3	1-103945-6
OBSOLETE	2	2.19	1.095	103653-9	10	1-103945-5
10	2	1.39	.695	103653-5	6	1-103945-4
OBSOLETE	4	2.38	.595	103653-4	5	1-103945-3
10	8	2.36	.295	103653-1	2	1-103945-2
8	2	2.59	1.295	1-103653-1	12	1-103945-1
8	2	2.39	1.195	1-103653-0	11	1-103945-0
8	2	2.19	1.095	103653-9	10	103945-9
8	2	1.99	.995	103653-8	9	103945-8
8	2	1.79	.895	103653-7	8	103945-7
8	3	2.39	.795	103653-6	7	103945-6
8	2	1.39	.695	103653-5	6	103945-5
8	4	2.38	.595	103653-4	5	103945-4
8	4	1.98	.495	103653-3	4	103945-3
8	5	1.98	.395	103653-2	3	103945-2
8	8	2.36	.295	103653-1	2	103945-1
PLATING	6	B	A	HOUSING PART NUMBER	NO OF POSN	ASSEMBLY POSN NUMBER ON STRIP

12 SUPERSEDED BY 5-103945-8

- 1 CONTACTS ARE LATCHED INTO THE PRELOAD WINDOWS
- 2 USE WITH #22-#26 AWG WIRE SIZE, .054/.030 INSULATION DIAMETER, .015 MAXIMUM INSULATION THICKNESS
- 3 THE DIMENSION APPLIES WITH THE FORWARD PRELOAD STOP IN CONTACT WITH THE HOUSING SURFACE
- 4 POINT OF MEASUREMENT FOR PLATING THICKNESS
- 5 FOR INDIVIDUAL ASSEMBLIES SEE PART NUMBER 103660
- 6 ASSEMBLIES ARE JOINED BY THE CARRIER STRIP. ORDER QUANTITY REFLECTS TOTAL NUMBER OF INDIVIDUAL ASSEMBLIES REQUIRED. SEE TABLE FOR NUMBER OF ASSEMBLIES PER STRIP.
- 7 MATERIAL- HOUSING: FLAME RETARDANT THERMOPLASTIC, COLOR: BLACK PINS: PHOS. BRONZE
- 8 FINISH- PINS: .000015 GOLD IN THE CONTACT AREA, .000050-.000100 BRIGHT TIN-LEAD ON THE TERMINATION AREA, OVER .000050 NICKEL.
- 9 FINISH- PINS: .000015 GOLD IN THE CONTACT AREA, .000050-.000100 BRIGHT TIN ON THE TERMINATION AREA, OVER .000050 NICKEL.
- 10 PRELIMINARY PART - NOT RELEASED FOR PRODUCTION.
- 11 FINISH- PINS: .000015 GOLD IN THE CONTACT AREA, .000050-.000100 MATTE TIN ON THE TERMINATION AREA, OVER .000050 NICKEL.
- 12 OBSOLETE PARTS: OBSOLETE CIS STREAMLINING PER D.RENAUD/D.SINISI

THIS DRAWING IS A CONTROLLED DOCUMENT.

DWN	R.BROWN	26JUL00
CHK	K.WRIGHT	26JUL00
APVD	K.WRIGHT	26JUL00

TE Connectivity

SHROUDED PIN ASSY, AMPMOW MTE, SINGLE ROW, .100 CL, POLARIZED, W/ LATCH WINDOWS, FOR #22-#26 AWG WIRE SIZE, STRIP FORM

NAME	108-25034
PRODUCT SPEC	114-25026
APPLICATION SPEC	
SIZE	A2
CAGE CODE	00779
DRAWING NO	C=103945
RESTRICTED TO	

SCALE 4:1 SHEET 1 of 1 REV M2

X-ON Electronics

Largest Supplier of Electrical and Electronic Components

Click to view similar products for [Headers & Wire Housings](#) category:

Click to view products by [TE Connectivity](#) manufacturer:

Other Similar products are found below :

[95000-104TRLF](#) [10135584-644402LF](#) [DF62W-EP2022PCA](#) [95000-106TRLF](#) [DF62W-2022SCA](#) [DF62W-EP2022PC](#) [2203348](#) [DF62W-2022SC](#) [1084018](#) [1029039](#) [1084017](#) [802-10-012-10-002000](#) [1112640](#) [1112639](#) [000-34000](#) [0009482033](#) [0009507031](#) [57102-S06-03LF](#) [57202-S52-04LF](#) [PCN6-15S-2.5E](#) [0039019024](#) [58102-G61-06LF](#) [582553-1](#) [0009508121](#) [0050291907](#) [018731A](#) [LY20-4P-DT1-P1E-BR](#) [02.125.8002.8](#) [60101931](#) [60598-1 \(Cut Strip\)](#) [M1625-3R/100](#) [61062-3](#) [61082-181009](#) [636-1427](#) [638009-1](#) [641938-9](#) [641991-4](#) [644168-1](#) [647662-1](#) [65039-019ELF](#) [65817-002LF](#) [65817-015LF](#) [65863-015LF](#) [66207-023LF](#) [67016-026LF](#) [67046-001LF](#) [67095-007LF](#) [68002-116](#) [68016-236H](#) [68648-049](#)