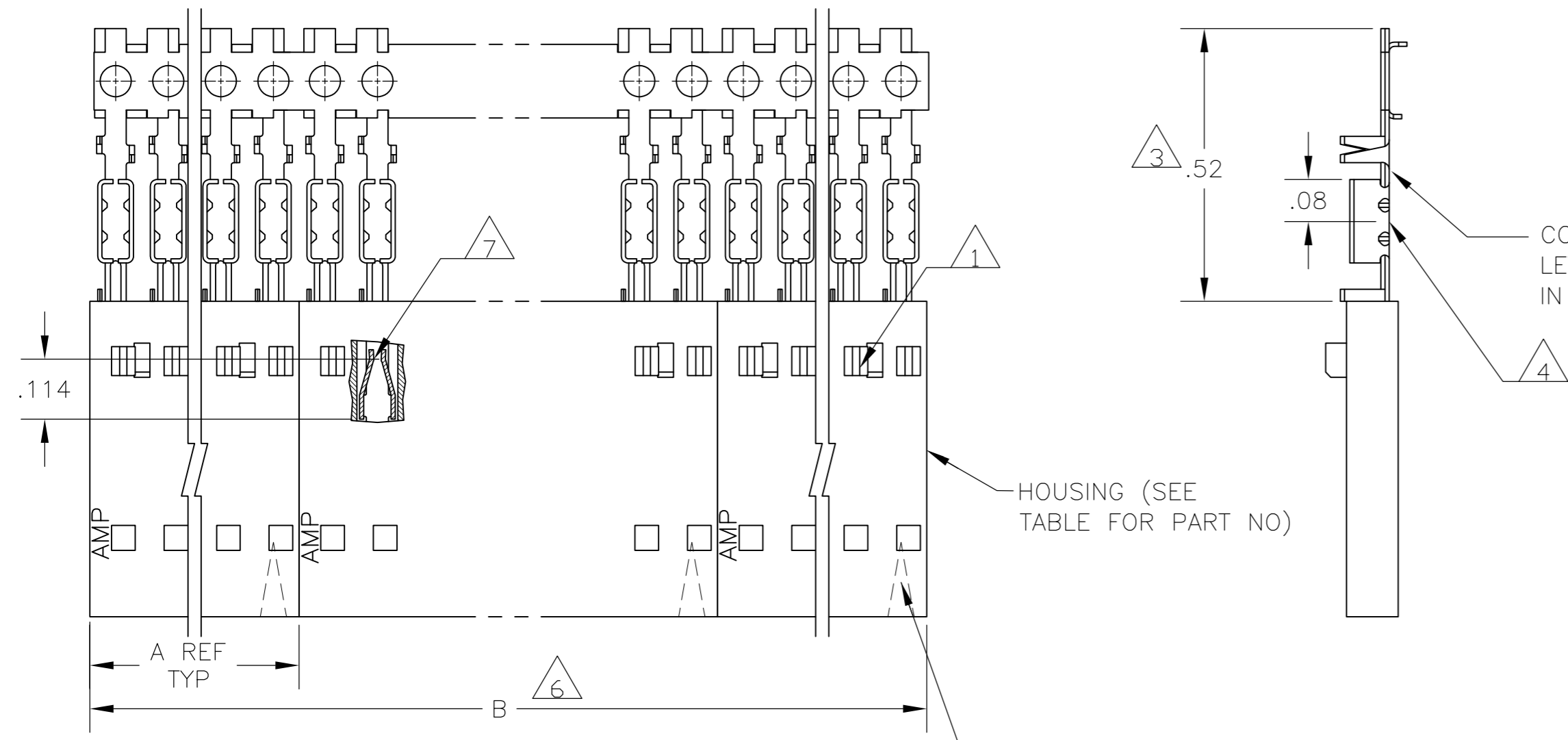


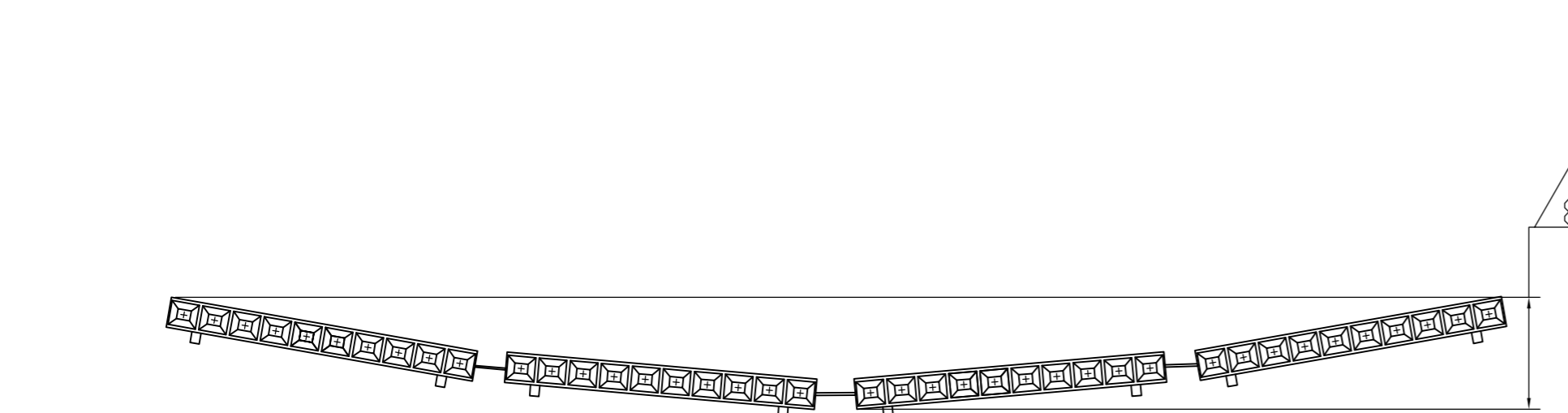
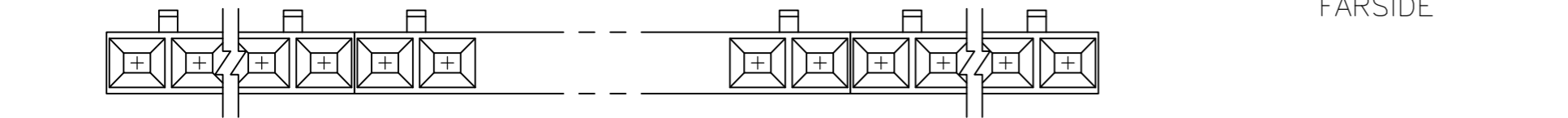
THIS DRAWING IS UNPUBLISHED. RELEASED FOR PUBLICATION
 © COPYRIGHT BY TYCO ELECTRONICS CORPORATION. ALL RIGHTS RESERVED.

Loc	Dist	REVISIONS					
		P	LTR	DESCRIPTION	DATE	DWN	APVD
AD	00	H		EC 0G3C 0759 04	24JAN05	BSV	JLG
		H1		REVISED PER ECO-09-020689	02SEP09	KK	AEQ



CONTACT IDENTIFICATION LETTER "B" (LOCATED IN THIS AREA)

- 1 CONTACTS ARE LATCHED INTO THE PRELOAD WINDOWS
- 2 USE WITH #22-#26 AWG WIRE SIZE, .054/.030 INSULATION DIAMETER, .015 MAXIMUM INSULATION THICKNESS
- 3 THE DIMENSION APPLIES WITH THE FORWARD PRELOAD STOP IN CONTACT WITH THE HOUSING SURFACE
- 4 POINT OF MEASUREMENT FOR PLATING THICKNESS
- 5 FOR INDIVIDUAL ASSEMBLIES SEE PART NUMBER 103651
- 6 ASSEMBLIES ARE JOINED BY THE CARRIER STRIP. ORDER QUANTITY REFLECTS TOTAL NUMBER OF INDIVIDUAL ASSEMBLIES REQUIRED. SEE TABLE FOR NUMBER OF ASSEMBLIES PER STRIP.
- 7 POINT OF MEASUREMENT FOR PLATING THICKNESS (INSIDE BEAMS)
- 8 MAXIMUM ALLOWABLE BOW OF ASSEMBLY NOT TO EXCEED .055.
- 9 .000015 GOLD IN THE CONTACT AREA, .000050-.000100 BRIGHT TIN-LEAD IN THE TERMINATION AREA, ALL OVER .000050 NICKEL.
- 10 .000015 GOLD IN THE CONTACT AREA, .000050-.000100 BRIGHT TIN IN THE TERMINATION AREA, ALL OVER .000050 NICKEL.
- 11 PRELIMINARY PART - NOT RELEASED FOR PRODUCTION.
- 12 HOUSING MATERIAL: FLAME RETARDANT THERMOPLASTIC, COLOR BLACK.
- 13 .000015 GOLD IN THE CONTACT AREA, .000050-.000100 MATTE TIN IN THE TERMINATION AREA, ALL OVER .000050 NICKEL.
- 14 OBSOLETE PARTS: OBSOLETE CIS STREAMLINING PER D.RENAUD/D.SINISI



EXAMPLE: STRIP ASSEMBLY
SCALE 2:1

14	OBSOLETE	13	2	2.40	1.198	1-103648-1	12	6-103969-1
14	OBSOLETE	13	2	2.20	1.098	1-103648-0	11	6-103969-0
14	OBSOLETE	13	2	2.00	.998	103648-9	10	5-103969-9
14	OBSOLETE	13	2	1.80	.898	103648-8	9	5-103969-8
14	OBSOLETE	13	2	1.60	.798	103648-7	8	5-103969-7
14	OBSOLETE	13	2	1.40	.698	103648-6	7	5-103969-6
		13	4	2.39	.598	103648-5	6	5-103969-5
		13	4	1.99	.498	103648-4	5	5-103969-4
		13	5	1.99	.398	103648-3	4	5-103969-3
		13	8	2.40	.298	103648-2	3	5-103969-2
		13	10	2.00	.198	103648-1	2	5-103969-1
		11	2	2.00	.998	103648-9	10	1-103969-2
14	OBSOLETE	9	2	2.40	1.198	1-103648-1	12	1-103969-1
14	OBSOLETE	9	2	2.20	1.098	1-103648-0	11	1-103969-0
		9	2	2.00	.998	103648-9	10	103969-9
14	OBSOLETE	9	2	1.80	.898	103648-8	9	103969-8
14	OBSOLETE	9	2	1.60	.798	103648-7	8	103969-7
14	OBSOLETE	9	2	1.40	.698	103648-6	7	103969-6
		9	4	2.39	.598	103648-5	6	103969-5
		9	4	1.99	.498	103648-4	5	103969-4
		9	5	1.99	.398	103648-3	4	103969-3
		9	8	2.40	.298	103648-2	3	103969-2
		9	10	2.00	.198	103648-1	2	103969-1
PLATING		6	B	A		HOUSING PART NUMBER	NO OF POSN	ASSEMBLY PART NUMBER ON STRIP

THIS DRAWING IS A CONTROLLED DOCUMENT.

DWN L. MAYER 05 NOV 1986
 CHK P.C.DEJONG 12-11-86
 APVD J. SCHEIFFER 12-11-86

TOLERANCES UNLESS OTHERWISE SPECIFIED:
 0 PLC ± -
 1 PLC ± -
 2 PLC ± .02
 3 PLC ± .005
 4 PLC ± -
 ANGLES ± -
 FINISH SEE TABLE

108-25034
 114-25026

12

Tyco Electronics Corporation
 Harrisburg, Pa 17105-3608

RCPT ASSY, AMPMODU MTE, SINGLE ROW, .100 C/L, WITH GUIDE RIBS, FOR #22-#26 AWG WIRE SIZE, STRIP FORM

SIZE A2 CAGE CODE 00779 DRAWING NO 103969 RESTRICTED TO -
 SCALE 1:1 SHEET 1 OF 1 REV H1

X-ON Electronics

Largest Supplier of Electrical and Electronic Components

Click to view similar products for [Headers & Wire Housings](#) category:

Click to view products by [TE Connectivity](#) manufacturer:

Other Similar products are found below :

[95000-104TRLF](#) [10135584-644402LF](#) [DF62W-EP2022PCA](#) [95000-106TRLF](#) [DF62W-2022SCA](#) [DF62W-EP2022PC](#) [2203348](#) [DF62W-2022SC](#) [1084018](#) [1029039](#) [1084017](#) [802-10-012-10-002000](#) [1112640](#) [1112639](#) [000-34000](#) [0009482033](#) [0009507031](#) [57102-S06-03LF](#) [57202-S52-04LF](#) [PCN6-15S-2.5E](#) [0039019024](#) [58102-G61-06LF](#) [582553-1](#) [0009508121](#) [0050291907](#) [018731A](#) [LY20-4P-DT1-P1E-BR](#) [02.125.8002.8](#) [60101931](#) [60598-1 \(Cut Strip\)](#) [M1625-3R/100](#) [61062-3](#) [61082-181009](#) [636-1427](#) [638009-1](#) [641938-9](#) [641991-4](#) [644168-1](#) [647662-1](#) [65039-019ELF](#) [65817-002LF](#) [65817-015LF](#) [65863-015LF](#) [66207-023LF](#) [67016-026LF](#) [67046-001LF](#) [67095-007LF](#) [68002-116](#) [68016-236H](#) [68648-049](#)