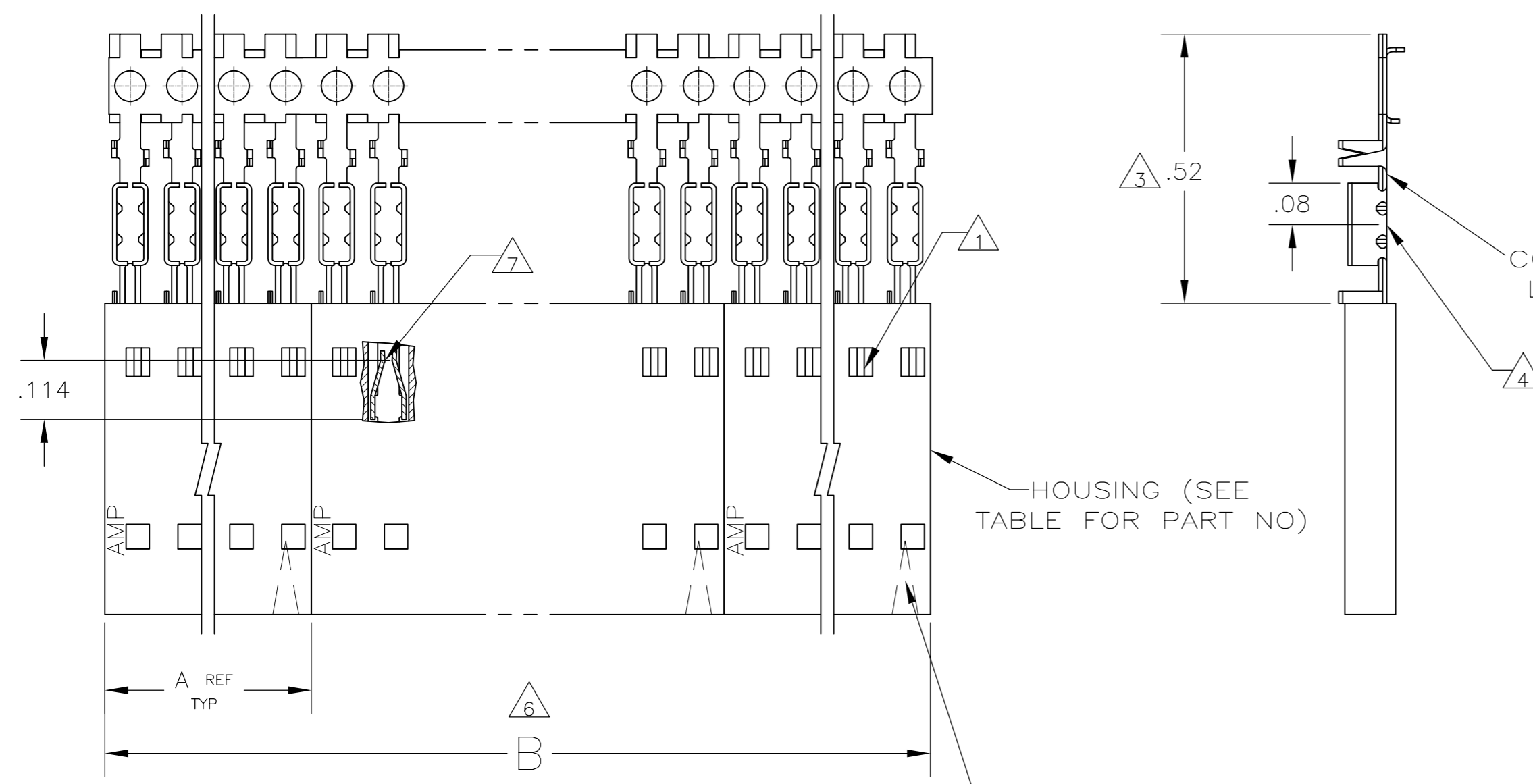


THIS DRAWING IS UNPUBLISHED. RELEASED FOR PUBLICATION
 © COPYRIGHT - By - ALL RIGHTS RESERVED.

| LOC | | DIST | | REVISIONS | | | |
|-----|----|------|-----|---------------------------|---------|-----|------|
| AD | 00 | P | LTR | DESCRIPTION | DATE | DWN | APVD |
| | | K2 | | REVISED PER ECO-11-004587 | 11MAR11 | RK | HMR |

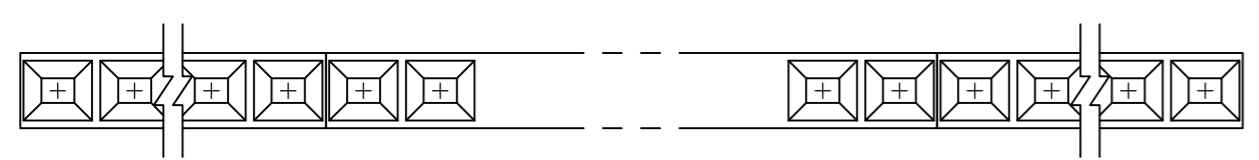


CONTACT IDENTIFICATION LETTER "B" (LOCATED IN THIS AREA)

HOUSING (SEE TABLE FOR PART NO)

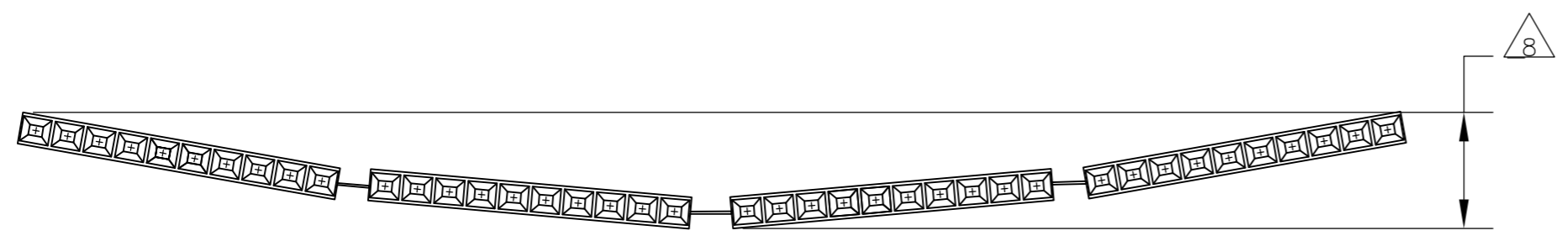
POSITION #1 INDICATOR (FAR SIDE)

- 1 CONTACTS ARE LATCHED INTO THE PRELOAD WINDOWS
- 2 USE WITH #22-#26 AWG WIRE SIZE, .054/.030 INSULATION DIAMETER, .015 MAXIMUM INSULATION THICKNESS
- 3 THE DIMENSION APPLIES WITH THE FORWARD PRELOAD STOP IN CONTACT WITH THE HOUSING SURFACE
- 4 POINT OF MEASUREMENT FOR PLATING THICKNESS
- 5 FOR INDIVIDUAL ASSEMBLIES SEE PART NUMBER 103902
- 6 ASSEMBLIES ARE JOINED BY THE CARRIER STRIP. ORDER QUANTITY REFLECTS TOTAL NUMBER OF INDIVIDUAL ASSEMBLIES REQUIRED. SEE TABLE FOR NUMBER OF ASSEMBLIES PER STRIP.
- 7 POINT OF MEASUREMENT FOR PLATING THICKNESS (INSIDE BEAMS)
- 8 MAXIMUM ALLOWABLE BOW OF ASSEMBLY NOT TO EXCEED .055.
- 9 FINISH: CONTACTS: .000030 GOLD IN THE CONTACT AREA, .000050-.000100 BRIGHT TIN-LEAD ON THE TERMINATION AREA, ALL OVER .000050 NICKEL
- 10 FINISH: CONTACTS: .000030 GOLD IN THE CONTACT AREA, .000050-.000100 MATTE TIN ON THE TERMINATION AREA, ALL OVER .000050 NICKEL
- 11 OBSOLETE PARTS: OBSOLETE CIS STREAMLINING PER D.RENAUD/D.SINISI



| | | | | | | | | |
|----|----------|---------|----|------|-------|---------------------|------------|-------------------------------|
| 11 | OBSOLETE | 10 | 2 | 2.40 | 1.198 | 1-103688-1 | 12 | 6-103976-1 |
| | | 10 | 2 | 2.20 | 1.098 | 1-103688-0 | 11 | 6-103976-0 |
| | | 10 | 2 | 2.00 | .998 | 103688-9 | 10 | 5-103976-9 |
| | | 10 | 2 | 1.80 | .898 | 103688-8 | 9 | 5-103976-8 |
| | | 10 | 2 | 1.60 | .798 | 103688-7 | 8 | 5-103976-7 |
| | | 10 | 2 | 1.40 | .698 | 103688-6 | 7 | 5-103976-6 |
| | | 10 | 4 | 2.39 | .598 | 103688-5 | 6 | 5-103976-5 |
| | | 10 | 4 | 1.99 | .498 | 103688-4 | 5 | 5-103976-4 |
| | | 10 | 5 | 1.99 | .398 | 103688-3 | 4 | 5-103976-3 |
| | | 10 | 8 | 2.40 | .298 | 103688-2 | 3 | 5-103976-2 |
| | | 10 | 10 | 2.00 | .198 | 103688-1 | 2 | 5-103976-1 |
| 11 | OBSOLETE | 9 | 2 | 2.40 | 1.198 | 1-103688-1 | 12 | 1-103976-1 |
| | | 9 | 2 | 2.20 | 1.098 | 1-103688-0 | 11 | 1-103976-0 |
| | | 9 | 2 | 2.00 | .998 | 103688-9 | 10 | 103976-9 |
| | | 9 | 2 | 1.80 | .898 | 103688-8 | 9 | 103976-8 |
| | | 9 | 2 | 1.60 | .798 | 103688-7 | 8 | 103976-7 |
| | | 9 | 2 | 1.40 | .698 | 103688-6 | 7 | 103976-6 |
| | | 9 | 4 | 2.39 | .598 | 103688-5 | 6 | 103976-5 |
| | | 9 | 4 | 1.99 | .498 | 103688-4 | 5 | 103976-4 |
| | | 9 | 5 | 1.99 | .398 | 103688-3 | 4 | 103976-3 |
| | | 9 | 8 | 2.40 | .298 | 103688-2 | 3 | 103976-2 |
| | | 9 | 10 | 2.00 | .198 | 103688-1 | 2 | 103976-1 |
| | | PLATING | 6 | B | A | HOUSING PART NUMBER | NO OF POSN | ASSEMBLY PART NUMBER ON STRIP |

11 SUPERSEDED BY 5-103976-6



EXAMPLE: STRIP ASSEMBLY SCALE 2:1

THIS DRAWING IS A CONTROLLED DOCUMENT. DWN L.MAYER 05 NOV 86
 CHK P.C.DEJONG 12-11-86
 APVD P.C.DEJONG 12-11-86

DIMENSIONS: INCHES TOLERANCES UNLESS OTHERWISE SPECIFIED:
 0 PLC ± -
 1 PLC ± -
 2 PLC ± .02
 3 PLC ± .005
 4 PLC ± -
 ANGLES ± -
 FINISH SEE TABLE

MATERIAL: HOUSING: FLAME RETARDANT THERMOPLASTIC, COLOR: BLACK CONTACTS: PHOS BRONZE

PRODUCT SPEC 108-25034 APPLICATION SPEC 114-25026 WEIGHT -

NAME RCPT ASSY, AMPMODU MTE, SINGLE ROW, .100 C/L, FOR NOS22-NOS26 AWG WIRE SIZE, STRIP FORM

SIZE A2 CAGE CODE 00779 DRAWING NO C=103976 RESTRICTED TO -

CUSTOMER DRAWING SCALE 4:1 SHEET 1 OF 1 REV K2

X-ON Electronics

Largest Supplier of Electrical and Electronic Components

Click to view similar products for [Headers & Wire Housings](#) category:

Click to view products by [TE Connectivity](#) manufacturer:

Other Similar products are found below :

[892-18-020-10-001101](#) [58102-G61-06LF](#) [582553-1](#) [0009485154](#) [009176003701906](#) [0050291907](#) [LY20-4P-DT1-P1E-BR](#) [02.125.8002.8](#)
[609-3404](#) [61062-3](#) [61082-181009](#) [622-3653LF](#) [63453-116](#) [636-1030](#) [636-1427](#) [636-3427](#) [636-4007](#) [641938-9](#) [641991-4](#) [644827-2](#) [65817-](#)
[010LF](#) [65817-015LF](#) [65863-015LF](#) [66207-023LF](#) [67095-007LF](#) [67601157](#) [68645-018](#) [68648-049](#) [70.362.1628.0](#) [70-4210](#) [70-4226B](#) [70-](#)
[4853B](#) [707-5020](#) [707-5028](#) [71.350.2428.0](#) [71918-208LF](#) [71961-016LF](#) [733-134](#) [733-162](#) [754199-000](#) [760-3052](#) [787-8014-00](#) [79531-3000](#)
[FCN-360C032-B](#) [FCN-367T-T012/H](#) [FCN-723D010/2](#) [80.063.4001.1](#) [800-90-001-10-001000](#) [800-90-010-10-002000](#) [801-43-002-10-013000](#)