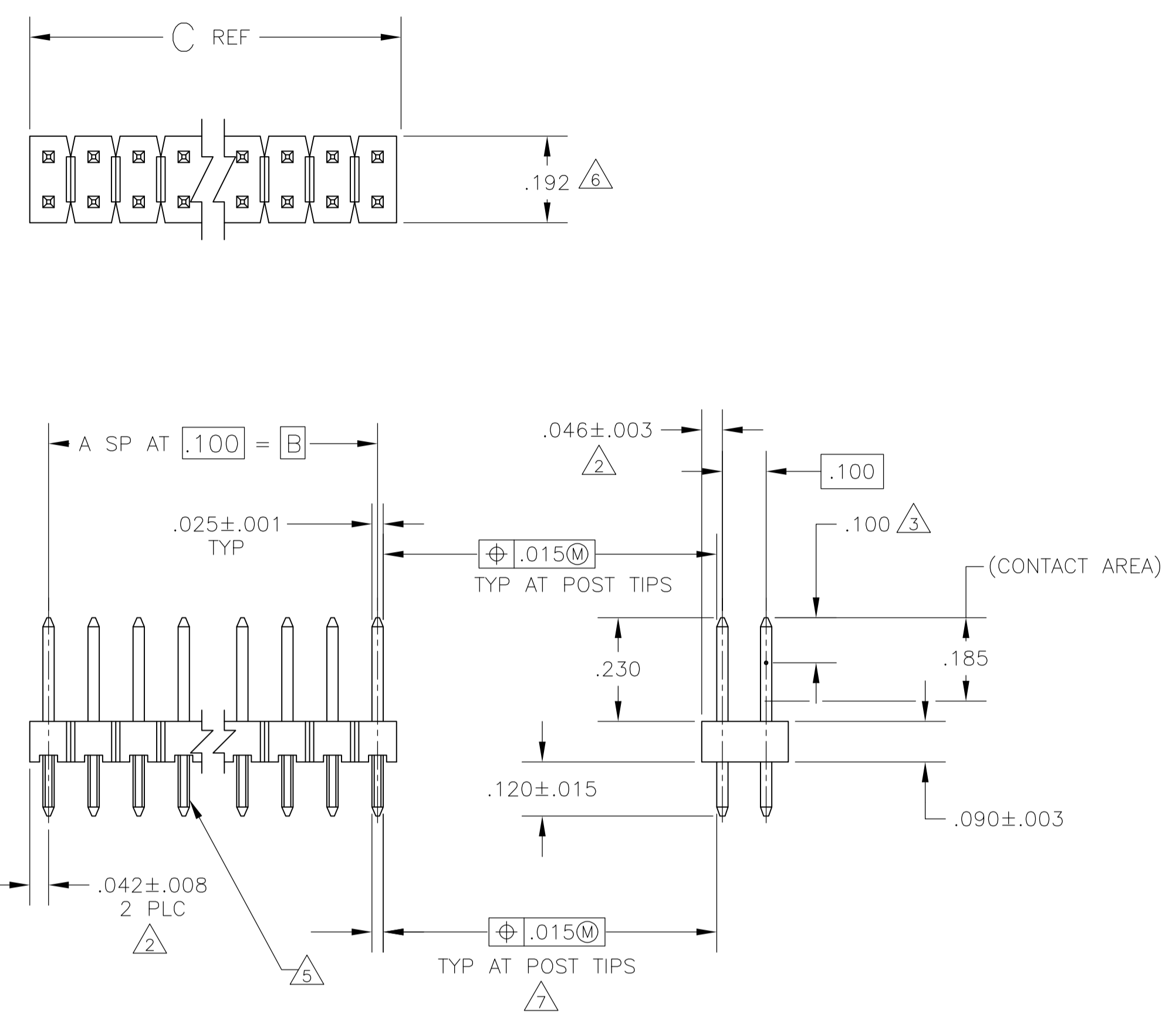
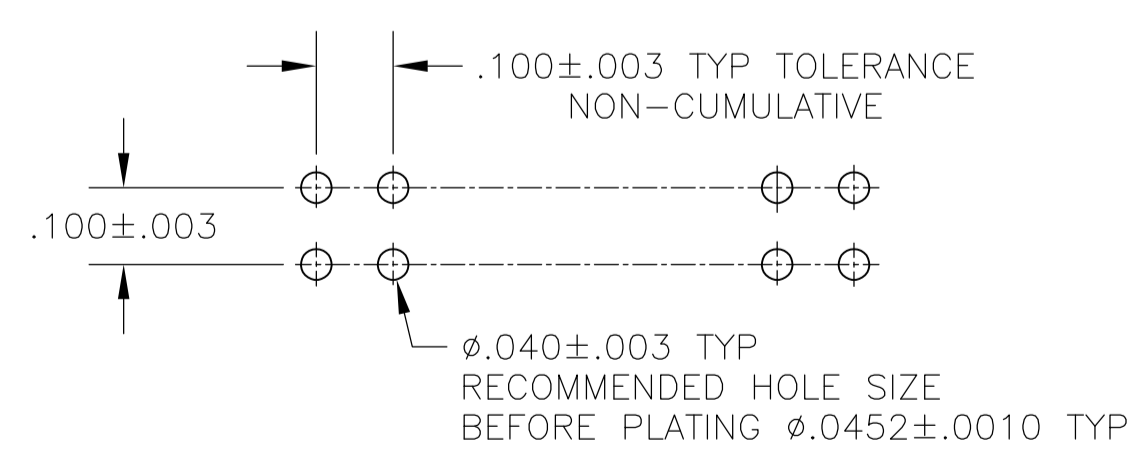


REVISIONS			DATE	BY	APPV
AD	00	S	02JUL2014	NK	MM



- 1 TRUE POSITION TOLERANCE OF THE POST TIPS APPLIES WHEN THE HEADER IS HELD FLAT AGAINST THE PRINTED CIRCUIT BOARD.
- 2 THE NOTED DIMENSIONS APPLY AT THE INTERSECTION OF THE POST AND HOUSING.
- 3 POINT OF MEASUREMENT FOR PLATING THICKNESS.
- 4 PART INDICATED IS PACKAGED IN SINGLE TUBES.
- 5 RETENTION FEATURES ON SOLDER TAILS, LOCATED AT MANUFACTURERS OPTION.
- 6 FOR 2 POSITION PART ONLY, THE NOTED DIMENSION IS .184
- 7  $\phi .020 \text{ M}$  FOR KINKED TAILS
- 8 OBSOLETE PARTS: OBSOLETE CIS STREAMLINING PER D.RENAUD/D.SINISI



RECOMMENDED HOLE LAYOUT

8 OBSOLETE		1.784	1.700	17	36	2-104351-3
SUPERSEDED BY 104351-8	4	.784	.700	7	16	2-104351-2
SUPERSEDED BY 1-104351-3	4	1.284	1.200	12	26	2-104351-1
		3.984	3.900	39	80	2-104351-0
8 OBSOLETE		2.984	2.900	29	60	1-104351-9
		2.484	2.400	24	50	1-104351-8
		1.984	1.900	19	40	1-104351-7
		1.684	1.600	16	34	1-104351-6
		1.484	1.400	14	30	1-104351-5
SUPERSEDED BY 6-146268-4	8	1.384	1.300	13	28	1-104351-4
		1.284	1.200	12	26	1-104351-3
		1.184	1.100	11	24	1-104351-2
SUPERSEDED BY 6-146268-1		1.084	1.000	10	22	1-104351-1
		.984	.900	9	20	1-104351-0
8 OBSOLETE		.884	.800	8	18	104351-9
		.784	.700	7	16	104351-8
		.684	.600	6	14	104351-7
		.584	.500	5	12	104351-6
		.484	.400	4	10	104351-5
		.384	.300	3	8	104351-4
		.284	.200	2	6	104351-3
		.184	.100	1	4	104351-2
		.084	---	---	2	104351-1
REMARKS		C	B	A	NO OF POSN	ASSEMBLY PART NUMBER

THIS DRAWING IS A CONTROLLED DOCUMENT.

DIN H MOLL 08FEB88  
 CHK R FEJDT 08FEB88  
 APPV R FEJDT 08FEB88

NAME: HEADER ASSY, MOD II, BREAKAWAY, DBL ROW, .100X.100 CL\_VERT, .025 SQ POSTS, WITH RETENTION FEATURE

SIZE: A1  
 SCALE: 4:1  
 SHEET: 1 OF 1  
 REV: S

MATERIAL: HOUSING: FLAME RETARDANT THERMOPLASTIC; CONTACT: COPPER ALLOY  
 FINISH: 500±10 GOLD IN CONTACT AREA (000120-000200); MATTE TIN-LEAD ON SOLDER TAIL; ALL OVER .00050 NICKEL

WEIGHT: --

CUSTOMER DRAWING

STE TE Connectivity

## X-ON Electronics

Largest Supplier of Electrical and Electronic Components

*Click to view similar products for [Headers & Wire Housings](#) category:*

*Click to view products by [TE Connectivity](#) manufacturer:*

Other Similar products are found below :

[892-18-020-10-001101](#) [58102-G61-06LF](#) [582553-1](#) [0009485154](#) [009176003701906](#) [0050291907](#) [LY20-4P-DT1-P1E-BR](#) [02.125.8002.8](#)  
[609-3404](#) [61062-3](#) [61082-181009](#) [622-3653LF](#) [63453-116](#) [636-1030](#) [636-1427](#) [636-3427](#) [636-4007](#) [641938-9](#) [641991-4](#) [644827-2](#) [65817-010LF](#) [65817-015LF](#) [65863-015LF](#) [66207-023LF](#) [67095-007LF](#) [67601157](#) [68645-018](#) [68648-049](#) [70.362.1628.0](#) [70-4210](#) [70-4226B](#) [70-4853B](#) [707-5020](#) [707-5028](#) [71.350.2428.0](#) [71918-208LF](#) [71961-016LF](#) [733-134](#) [733-162](#) [754199-000](#) [760-3052](#) [787-8014-00](#) [79531-3000](#)  
[FCN-360C032-B](#) [FCN-367T-T012/H](#) [FCN-723D010/2](#) [80.063.4001.1](#) [800-90-001-10-001000](#) [800-90-010-10-002000](#) [801-43-002-10-013000](#)