

| | |
|---|------|
| DESIGNED FOR USE WITH .085 S/R CABLE | |
| CABLE ENTRY DIAMETER MINIMUM | |
| HOUSING | .089 |
| CONTACT | .023 |

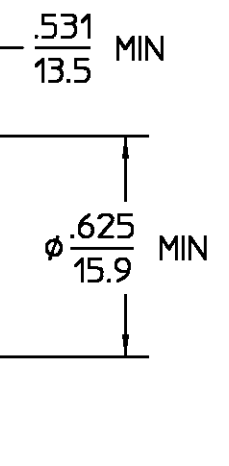
| REVISIONS | | | |
|-----------|---------------------|-----------------|----------------------------|
| REV | DESCRIPTION | DATE | APPROVED |
| 042 | REVISED | KYLE 5-19-97 | <i>Com</i> 5/20/97 |
| B | PER EC 0U20-0692-00 | 9/24/01 | <i>C. Zhang</i> 9/24/01 |

| ELECTRICAL |
|---|
| Nominal Impedance (Ohms) <u>50</u> |
| Frequency Range (GHz) DC to <u>18</u> |
| Volt Rating (VRMS MAX) @ Sea Level <u>335</u> |
| VSWR <u>1.10+0.1f(GHz)</u> |
| Insertion Loss (dB MAX) <u>.06 √f(GHz)</u> |
| RF Leakage (dB MIN) <u>-[90-f(GHz)]</u> |
| Corona, 70,000 Ft (VRMS MIN) <u>250</u> |
| Dielectric Withstanding Voltage (VRMS MIN) @ Sea Level <u>1000</u> |
| Contact Resistance (Milliohms MAX) |
| Center Contact <u>1.5</u> |
| Outer Contact <u>2.0</u> |
| Cable to Housing <u>0.5</u> |
| RF High Potential @ Sea Level (VRMS MIN @ 5 MHz) <u>670</u> |
| IR.(Megohms MIN) <u>5000</u> |

| MECHANICAL |
|--|
| Interface Dimensions MIL-STD-348A, Fig. <u>304.2</u> |
| Recommended Mating Torque <u>N/A</u> |
| Mating Characteristics: |
| Insertion (MAX Lbs) <u>2.0</u> |
| Withdrawal (MIN Oz) <u>2.0</u> |
| Force to Engage and Disengage (In-Lbs MAX) <u>6.0</u> |
| Center Contact Captivation Axial (Lbs) <u>N/A</u> |
| Radial (In-Oz) <u>N/A</u> |
| Cable Retention Axial Force (Lbs) <u>30 MIN</u> |
| Torque (In-Oz) <u>16 MIN</u> |
| Weight (Grams) <u>TBD</u> |

| ENVIRONMENTAL |
|--|
| Temperature Rating <u>-65°C to +105°C</u> |
| Vibration MIL-STD-202, Method 204, Condition B |
| Shock MIL-STD-202, Method 213, Condition I |
| Thermal Shock MIL-STD-202, Method 107, Condition B, Except High Temp 105°C |
| Moisture Resistance MIL-STD-202, Method 106 |
| Corrosion - MIL-STD-202, Method 101, Condition B, 5% salt spray |

.XXX = in
XX.X = mm (REF)



| COMPONENT | MATERIAL | FINISH |
|---------------------------------------|--|-------------------------------|
| HOUSING | BRASS PER ASTM-B-16, HALF HARD | GOLD PLATE PER MIL-G-45204 |
| HOUSING MOUNTING NUT LOCKWASHER | STAINLESS STEEL PER ASTM-A484 AND ASTM- A582, TYPE 303 | PASSIVATE PER QQ-P-35 |
| DIELECTRIC | PTFE FLUOROCARBON PER ASTM-D-1457 | N/A |
| CENTER CONTACT | BRASS PER ASTM-B-16, HALF HARD | GOLD PLATE PER MIL-G-45204 |
| CONTACT EXT. | BERYLLIUM COPPER PER ASTM-B-196 OR ASTM-B-197, ALLOY C17300, CONDITION H | GOLD PLATE PER MIL-G-45204 |
| GASKET 'O' RING | SILICONE RUBBER PER ZZ-R-765 | N/A |

| | | | | | | |
|--|---------------------|------------------|--|---|--------------|--|
| UNLESS OTHERWISE SPECIFIED DIMENSIONS ARE IN INCHES TOLERANCE ON FRAC. DEC. ANGLES ± 1/64 ±.005 ± ° | DRAWN BY | DATE | AMP | AMP Incorporated 140 Fourth Avenue Waltham, MA 02451-7599 | | |
| | CHECKED BY | 3/23/71 | | | | |
| APPD BY | 3/25/71 | | | | | |
| These drawings and specifications are the property of M/A-COM Incorporated and shall not be reproduced or copied or used in whole or in part as the basis for the manufacture or sale of item(s) without written permission. | USE ASS'Y PROCEDURE | 408-04744 | TITLE OSN BULKHEAD FEEDTHROUGH CABLE JACK-DIRECT SOLDER ATTACHMENT | | REV | |
| | NO. AP. (30-006) | NO. AP. (30-006) | SIZE B | CODE IDENT NO. 26805 | 3004-7985-00 | |
| | SCALE 2:1 | | | | SHEET 1 OF 1 | |

X-ON Electronics

Largest Supplier of Electrical and Electronic Components

Click to view similar products for [RF Connectors / Coaxial Connectors](#) category:

Click to view products by [TE Connectivity](#) manufacturer:

Other Similar products are found below :

[8915-1511-000](#) [89674-0827](#) [6001-7071-019](#) [6002-7051-003](#) [6002-7551-202](#) [6059674-1](#) [619550-1](#) [630059-000](#) [M39030/3-01N](#) [6500-7071-046](#) [6769](#) [CX050L2AQ](#) [7002-1541-010](#) [7002-1542-011](#) [7004-1512-000](#) [7009-1511-004](#) [7010-1511-000](#) [7029-1511-060](#) [7101-1541-010](#) [7101-1571-002](#) [7105-1521-002](#) [7145-1521-002](#) [7203-1571-003](#) [7209-1511-011](#) [7210-1511-015](#) [7210-1511-019](#) [73137-5015](#) [73216-2241](#) [73404-2300](#) [7405-1521-005](#) [7405-1521-802](#) [8527](#) [8547](#) [FS11V](#) [877931](#) [9049-9513-000](#) [9074-9513-000](#) [9101-9573-002](#) [910A205F](#) [9130-9573-002](#) [PL11SC-026](#) [PL375-33](#) [PL40-5](#) [PL74C-221](#) [PL75MC-217](#) [PL803-7](#) [1200690078](#) [1-201144-1](#) [R107003010W](#) [R110A172100](#)