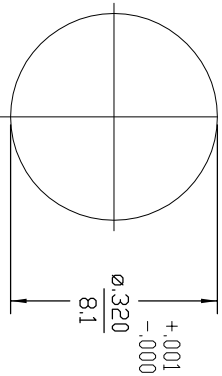
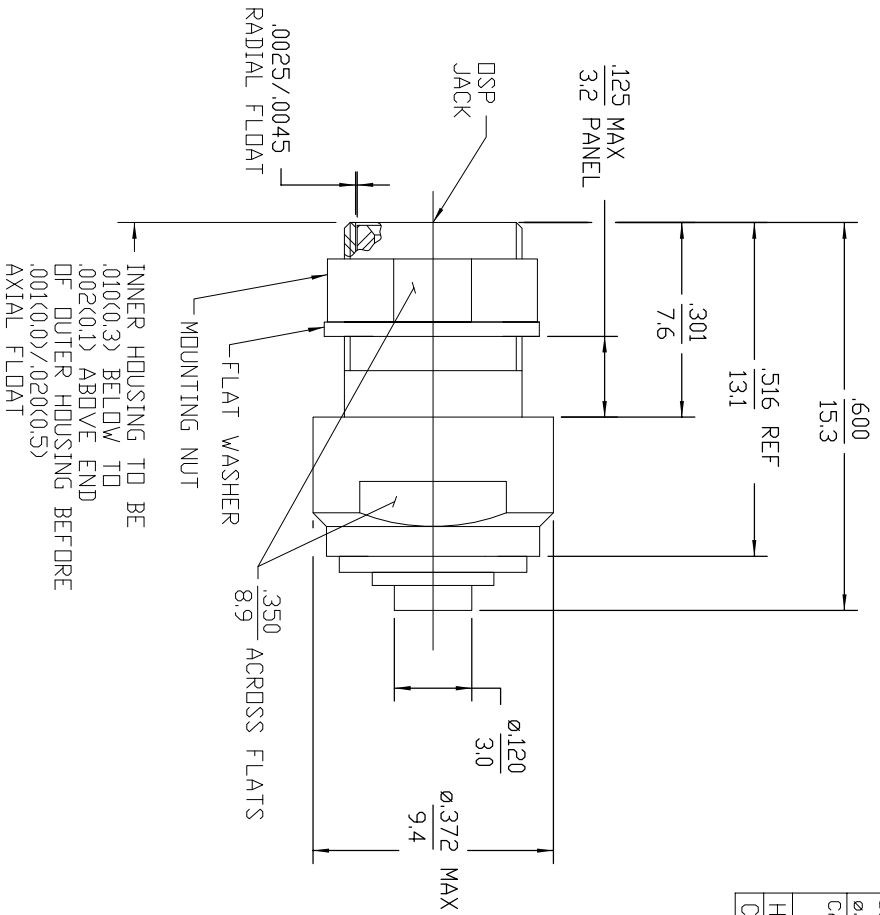


DESIGNED FOR USE WITH		REVISIONS	
REV	DESCRIPTION	DATE	APPROVED
041	REVISED	7/25/96	<i>[Signature]</i>
A1	REVISED	23MDV17	<i>[Signature]</i>
HOUSING CONTACT	.089	A1	REVISED
HOUSING	.089	A1	REVISED
CONTACT	.021		



NOTES:  
1. CAPTURED CENTER CONTACT

COMPONENT	MATERIAL	FINISH
HOUSING, INNER BUSHING	STAINLESS STEEL PER ASTM-A484 AND ASTM-A582, TYPE 303	GOLD PLATE PER MIL-G-45204
HOUSING, OUTER MOUNTING NUT	STAINLESS STEEL PER ASTM-A484 AND ASTM-A582, TYPE 303	PASSIVATE PER QQ-P-35
DIELECTRIC	TFE FLUOROCARBON PER ASTM-D-1457	N/A
CENTER CONTACT	BERYLLIUM COPPER PER ASTM-B-196 DR ASTM-B-197, ALLOY C17300, CONDITION H	GOLD PLATE PER MIL-G-45204
CONTACT SLEEVE	BERYLLIUM COPPER PER ASTM-B-196, ALLOY C17300, CONDITION H	GOLD PLATE PER MIL-G-45204
CONTACT RING	BERYLLIUM COPPER PER ASTM-B-194, ALLOY C17200, CONDITION H	NICKEL PLATE PER QQ-N-290
RETAINING RING	BERYLLIUM COPPER PER ASTM-B-194, ALLOY C17200, CONDITION H	NICKEL PLATE PER QQ-N-290
FLAT WASHER	BRASS PER ASTM-B-16	NICKEL PLATE PER MIL-C-26074
SPRING	MUSIC WIRE	NICKEL PLATE PER MIL-C-26074

UNLESS OTHERWISE SPECIFIED DIMENSIONS ARE IN INCHES		DATE	
FRACTION	DECIMALS	MM	INCHES
± 1/64	± .005	1/77/88	1/77/88
ANGLES ± 1°		DATE	
DRAWN BY K.C. MAHER		DATE 1/5/88	
CHECKED BY M.H.M.		DATE 1/7/88	
APPROVED BY BAR.		DATE 1/7/88	
USE ASS'Y PROCEDURE		DATE	
408-04596		DATE	
NO. AP. (45-047)		DATE	

**AMP**  
AMP Incorporated  
140 Fourth Avenue  
Valhalla, NY 02451-7599

SIZE	CODE IDENT. NO.	REV
B	26805	041
SCALE	5:1	SHEET 1 OF 1

COPY IN PUERTO RICO

CUSTOMER DRAWING

AMP PART # 1057230-1  
SHEET 1 OF 1 REV A1

## X-ON Electronics

Largest Supplier of Electrical and Electronic Components

*Click to view similar products for [RF Connectors / Coaxial Connectors](#) category:*

*Click to view products by [TE Connectivity](#) manufacturer:*

Other Similar products are found below :

[8915-1511-000](#) [89674-0827](#) [6001-7071-019](#) [6002-7051-003](#) [6002-7551-202](#) [6059674-1](#) [619550-1](#) [630059-000](#) [M39030/3-01N](#) [6500-7071-046](#) [6769](#) [CX050L2AQ](#) [7002-1541-010](#) [7002-1542-011](#) [7004-1512-000](#) [7009-1511-004](#) [7010-1511-000](#) [7029-1511-060](#) [7101-1541-010](#) [7101-1571-002](#) [7105-1521-002](#) [7145-1521-002](#) [7203-1571-003](#) [7209-1511-011](#) [7210-1511-015](#) [7210-1511-019](#) [73137-5015](#) [73216-2241](#) [73404-2300](#) [7405-1521-005](#) [7405-1521-802](#) [8527](#) [8547](#) [FS11V](#) [877931](#) [8808-1511-001](#) [9074-9513-000](#) [9101-9573-002](#) [910A205F](#) [9130-9573-002](#) [PL11SC-026](#) [PL375-33](#) [PL40-5](#) [PL74C-221](#) [PL75MC-217](#) [PL803-7](#) [1200690078](#) [1-201144-1](#) [R107003010W](#) [R110A172100](#)