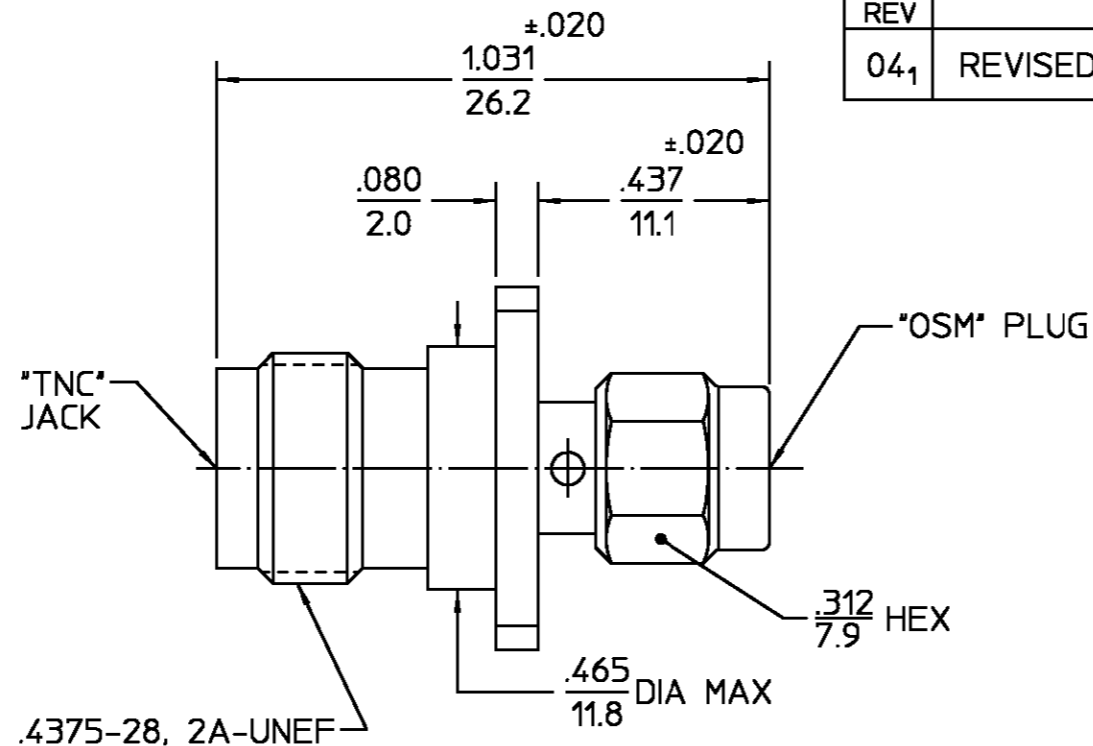



.099-56 UNF-2B
(4 PLACES)



REVISIONS			
REV	DESCRIPTION	DATE	APPROVED
04 ₁	REVISED	4/1/96	DCM 4/1/96

.XXX = in
XX.X = mm

HOUSING COUPLING NUT	STAINLESS STEEL PER ASTM-A484 AND ASTM-A582, TYPE 303	PASSIVATE PER QQ-P-35
DIELECTRIC	TFE FLUOROCARBON PER ASTM-D-1457	N/A
CENTER CONTACT	BERYLLIUM COPPER PER ASTM-B-196 OR ASTM-B-197, ALLOY C17300, CONDITION H	GOLD PLATE PER MIL-G-45204
RETAINING RING	BERYLLIUM COPPER PER ASTM-B-194, ALLOY C17200, CONDITION H	GOLD PLATE PER MIL-G-45204
GASKET	SILICONE RUBBER PER ZZ-R-765	N/A
COMPONENT	MATERIAL	FINISH

UNLESS OTHERWISE SPECIFIED DIMENSIONS ARE IN INCHES	DRAWN BY	DATE	 AMP Incorporated 140 Fourth Avenue Waltham, MA 02451-7599
	B.S.	8/3/89	
	CHECKED BY	10/18/89	
FRAC. ± 1/64	DEC. ± .005	ANGLES ± 1°	APPD BY
			B.C.
			10/31/89

NOTES:
1. CAPTURED CENTER CONTACT

These drawings and specifications are the property of M/A COM Interconnect Div. and shall not be reproduced or copied or used in whole or in part as the basis for the manufacture or sale of item(s) without written permission.	USE ASSY PROCEDURE	TITLE "TNC" JACK TO "OSM" PLUG ADAPTER	
	NO. A.P. N/A	SIZE B	REV 04 ₁
		CODE IDENT NO. 26805	3182-2243-00
	SCALE 5:1		

CUSTOMER DRAWING

AMP PART # 1057857-1
SHEET 1 OF 1 REV A

X-ON Electronics

Largest Supplier of Electrical and Electronic Components

Click to view similar products for [RF Adapters - Between Series](#) category:

Click to view products by [TE Connectivity](#) manufacturer:

Other Similar products are found below :

[R191203007](#) [R191209000](#) [R191212000](#) [R191215000](#) [R191301000](#) [R191314700](#) [R191325000](#) [R191389200](#) [R191403000](#) [R191405000](#)
[R191416000](#) [R191419000](#) [R191421000](#) [R191424000](#) [R191445000](#) [R191511000](#) [R191720000](#) [R191722000](#) [R191733000](#) [R191759000](#)
[R191841001W](#) [R191911000](#) [R191912000](#) [R192417010](#) [R921390000](#) [ADBJ20-E1-BJ379](#) [ADM2](#) [ADPL75-E1-UBJ20](#) [9317505](#)
[931RPBUFLP](#) [AD130](#) [ADBJ20-E1-PL74](#) [ADBJ77-A1PL3155](#) [ADBJ77-E1-UPL20](#) [ADBJ77-E2-PL20](#) [242215](#) [242228](#) [R125680000W](#)
[R191117000](#) [R191123000](#) [R191303000](#) [R191311000](#) [R191313000](#) [R191315000](#) [R191316700](#) [R191327000](#) [R191331000](#) [R191333000](#)
[R191334000](#) [R191365000](#)