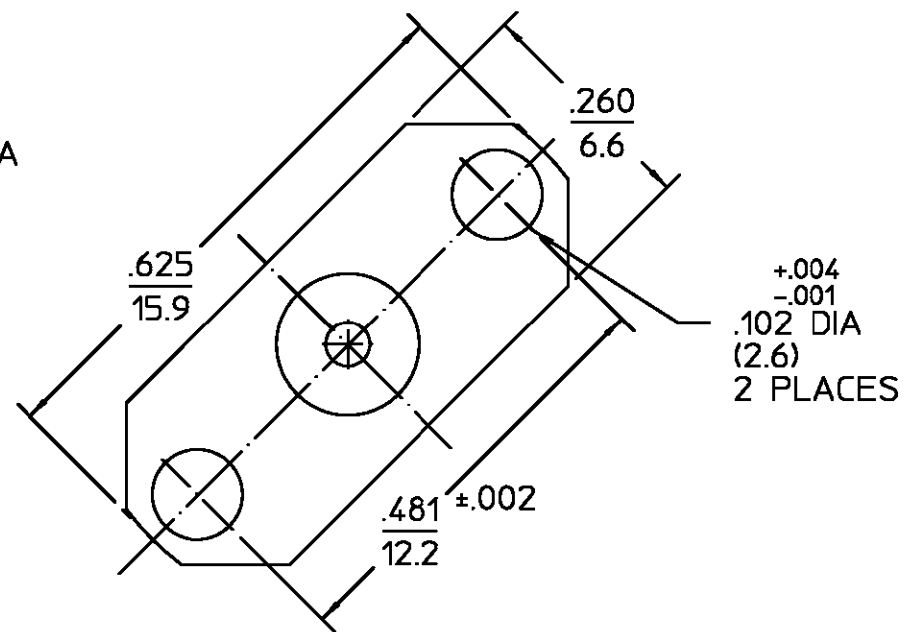
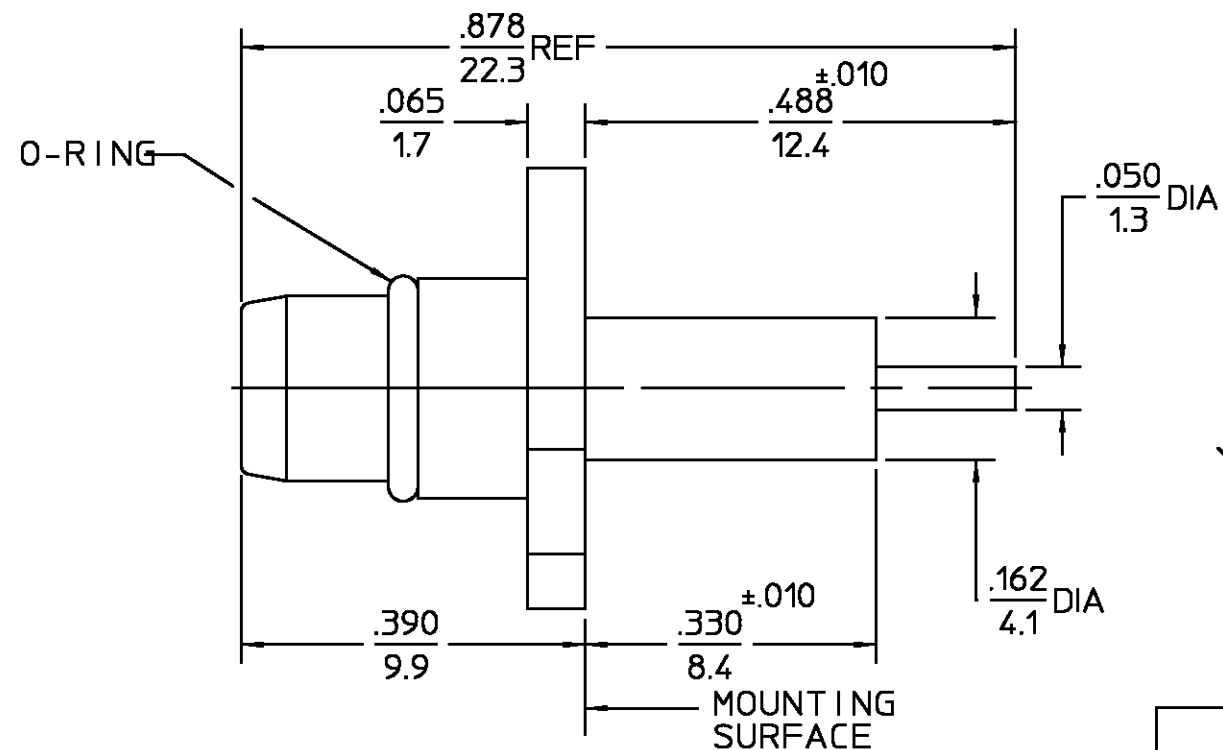


| REVISIONS | | | |
|-----------------|---------------------|---------|-----------------|
| REV | DESCRIPTION | DATE | APPROVED |
| 01 ₀ | RELEASED | 5/9/96 | <i>PCW</i> |
| B | PER EC 0U20-0262-01 | 18DEC01 | <i>C. Huang</i> |



| ELECTRICAL | MECHANICAL | ENVIRONMENTAL |
|----------------------------------------------------------------------------|----------------------------------------------------------|-------------------------------------------------------------|
| Nominal Impedance (Ohms) 50 | | Temperature Rating -40° to +105°C |
| Frequency Range (GHz) DC to 6 | | Vibration MIL-STD-1344, Method 2005, Condition V-F |
| Volt Rating (VRMS MAX) @ Sea Level | Force to Engage (Lbs MAX) 3 & Disengage (Lbs MAX) 1.0 | Shock MIL-STD-1344, Method 2004 Condition A |
| Return Loss 20.0 dB Min | Center Contact Captivation | Thermal Shock MIL-STD-1344 Method 1003, Condition A |
| Insertion Loss (dB MAX) 0.5% f(GHz) | Axial (Lbs) 6.0 | Moisture Resistance MIL-STD-1344 Method 1002, Cond B Type I |
| RF Leakage (dB MIN) (Fully Mated) -(60-f(GHz)) | Weight (Grams) TBD | Corrosion - MIL-STD-1344, Method 1001, 48 Hrs |
| Corona, 70,000 Ft (VRMS MIN) 190 | | |
| Dielectric Withstanding Voltage (VRMS MIN) @ Sea Level 500 | | |
| Contact Resistance (Milliohms MAX) Center Contact 2.0 Outer Contact 5.0 | | |
| RF High Potential @ Sea Level (VRMS MIN @ 5 MHz) 500 | | |
| I.R.(Megohms MIN) 10000 | | |

| COMPONENT | MATERIAL | FINISH |
|----------------|--------------------------------------------------------------------------|----------------------------|
| HOUSING | BRASS PER ASTM-B-16, HALF HARD | WHITE BRONZE PLATE |
| DIELECTRIC | TFE FLUOROCARBON PER ASTM-D-1457 | N/A |
| CENTER CONTACT | BERYLLIUM COPPER PER ASTM-B-196 OR ASTM-B-197, ALLOY C17300, CONDITION H | GOLD PLATE PER MIL-G-45204 |
| O-RING | FLOUROSILICONE PER MIL-R-25988, CLASS 1, TYPE 1 | N/A |

| | | | |
|-----------------------------------------------------------------------------------------------------------------------------------------------------------------------------------------------------------------------------------|--------------------|-------------------------------------------------------------------|----------------------------------------------------------------------------|
| UNLESS OTHERWISE SPECIFIED DIMENSIONS ARE IN INCHES FRAC. ± 1/64 DEC. ±.005 ANGLES ± 1° | DRAWN BY | DATE | AMP Incorporated 140 Fourth Avenue Waltham, MA 02451-7599 |
| | CHECKED BY | | |
| | APPD BY <i>PCW</i> | 5/9/96 | |
| These drawings and specifications are the property of M/A COM Interconnect Div. and shall not be reproduced or copied or used in whole or in part as the basis for the manufacture or sale of item(s) without written permission. | USE ASSY PROCEDURE | TITLE OSP 2 HOLE FLANGE MOUNT PLUG RECEPTACLE - STRAIGHT TERMINAL | |
| | NO. A.P. _____ | SIZE B | CODE IDENT NO. 26805 |
| | | SCALE 6 X | 4451-5002-36 |
| | | SHEET 1 OF 1 | |

CUSTOMER DRAWING

AMP PART # 1059345-1
SHEET 1 OF 1 REV B

X-ON Electronics

Largest Supplier of Electrical and Electronic Components

Click to view similar products for [RF Connectors / Coaxial Connectors](#) category:

Click to view products by [TE Connectivity](#) manufacturer:

Other Similar products are found below :

[8915-1511-000](#) [89674-0827](#) [6001-7071-019](#) [6002-7051-003](#) [6002-7551-202](#) [6059674-1](#) [619550-1](#) [630059-000](#) [M39030/3-01N](#) [6500-7071-046](#) [6769](#) [CX050L2AQ](#) [7002-1541-010](#) [7002-1542-011](#) [7004-1512-000](#) [7009-1511-004](#) [7010-1511-000](#) [7029-1511-060](#) [7101-1541-010](#) [7101-1571-002](#) [7105-1521-002](#) [7145-1521-002](#) [7203-1571-003](#) [7209-1511-011](#) [7210-1511-015](#) [7210-1511-019](#) [73137-5015](#) [73216-2241](#) [73404-2300](#) [7405-1521-005](#) [7405-1521-802](#) [8527](#) [8547](#) [FS11V](#) [877931](#) [9049-9513-000](#) [9074-9513-000](#) [9101-9573-002](#) [910A205F](#) [9130-9573-002](#) [PL11SC-026](#) [PL375-33](#) [PL40-5](#) [PL74C-221](#) [PL75MC-217](#) [PL803-7](#) [1200690078](#) [1-201144-1](#) [R107003010W](#) [R110A172100](#)