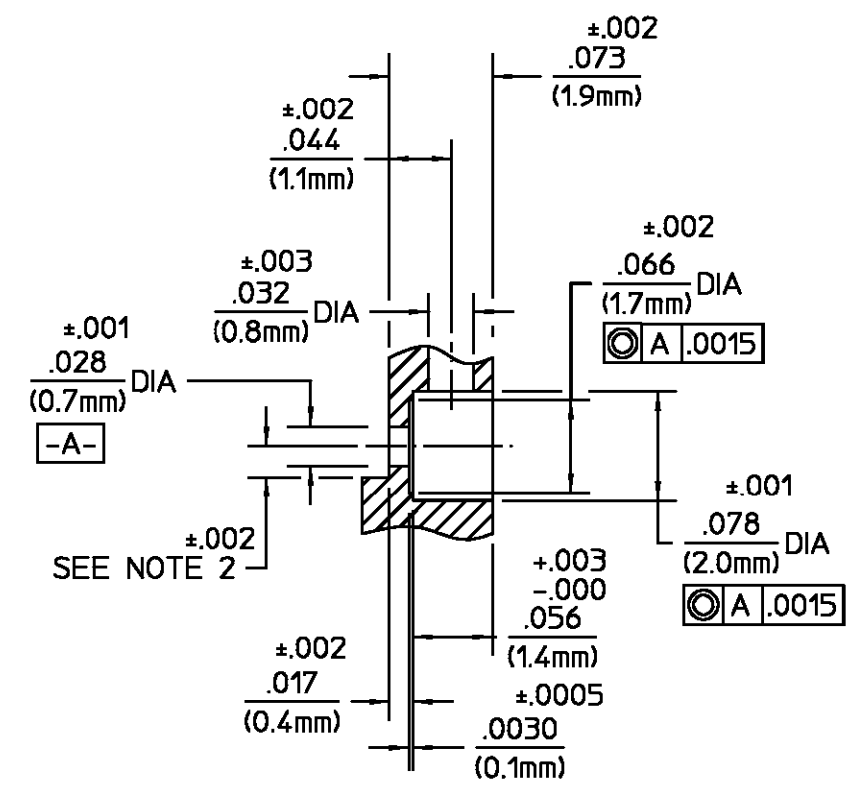


RECOMMENDED MOUNTING PATTERN

REVISIONS			
REV	DESCRIPTION	DATE	APPROVED
03 ₀	RELEASED WAS UNRELEASED	4-27-92	<i>CAF</i>
B	PER EC 0U20-0116-01-05	19NOV01	<i>C. Hoang</i>

NOTES:

1. CAPTURED CENTER CONTACT
2. DIMENSION IS .006 (PIN RADIUS) + SUBSTRATE THICKNESS + SOLDER THICKNESS
3. FOR RECOMMENDED MOUNTING HOLE FOR USE WITH SLIDING CONTACT SEE AP# 48-007



RECOMMENDED MOUNTING HOLE SCALE: 8:1

.XXX = in
XX.X = mm (REF)

HOUSING	STAINLESS STEEL PER ASTM-A484 AND ASTM-A582, TYPE 303	PASSIVATE PER ASTM-A380
BUSHING	BERYLLIUM COPPER PER ASTM B 196, ALLOY C17300, CONDITION H	GOLD PLATE PER MIL-G-45204 OVER NICKEL PLATE PER QQ-N-290
SUPPORT BEAD	NORYL PPO EN265 COLOR: BLACK	N/A
CENTER CONTACT	BRASS PER ASTM-B-16, HALF HARD	GOLD PLATE PER MIL-G-45204
COMPONENT	MATERIAL	FINISH

UNLESS OTHERWISE SPECIFIED DIMENSIONS ARE IN INCHES TOLERANCE ON FRAC. DEC. ANGLES ± 1/64 ±.005 ± °	DRAWN BY <i>MC</i> DATE 4-24-92	AMP Incorporated 140 Fourth Avenue Waltham, MA 02451-7599
	CHECKED BY <i>BB</i> 4/24/92	
These drawings and specifications are the property of Omni Spectra Incorporated and shall not be reproduced or copied or used in whole or in part as the basis for the manufacture or sale of item(s) without written permission.	APPD BY <i>CAF</i> 4-27-92	AMP
	USE ASSY PROCEDURE	
408-04628 (48-007)	TITLE OS-2.9 2 HOLE FLANGE MOUNT JACK RECEPTACLE - FIELD REPLACEABLE	
NO. AP	SIZE B	CODE IDENT NO. 26805
	SCALE 4:1	4852-3575-02
		REV 03 ₀
		SHEET 1 OF 1

CUSTOMER DRAWING

AMP PART # 1060031-1
SHEET 1 OF 1 REV B

X-ON Electronics

Largest Supplier of Electrical and Electronic Components

Click to view similar products for [RF Connectors / Coaxial Connectors](#) category:

Click to view products by [TE Connectivity](#) manufacturer:

Other Similar products are found below :

[8915-1511-000](#) [89674-0827](#) [6001-7071-019](#) [6002-7051-003](#) [6002-7551-202](#) [6059674-1](#) [619550-1](#) [630059-000](#) [M39030/3-01N](#) [6500-7071-046](#) [6769](#) [CX050L2AQ](#) [7002-1541-010](#) [7002-1542-011](#) [7004-1512-000](#) [7009-1511-004](#) [7010-1511-000](#) [7029-1511-060](#) [7101-1541-010](#) [7101-1571-002](#) [7105-1521-002](#) [7145-1521-002](#) [7203-1571-003](#) [7209-1511-011](#) [7210-1511-015](#) [7210-1511-019](#) [73137-5015](#) [73216-2241](#) [73404-2300](#) [7405-1521-005](#) [7405-1521-802](#) [8527](#) [8547](#) [FS11V](#) [877931](#) [9049-9513-000](#) [9074-9513-000](#) [9101-9573-002](#) [910A205F](#) [9130-9573-002](#) [PL11SC-026](#) [PL375-33](#) [PL40-5](#) [PL74C-221](#) [PL75MC-217](#) [PL803-7](#) [1200690078](#) [1-201144-1](#) [R107003010W](#) [R110A172100](#)