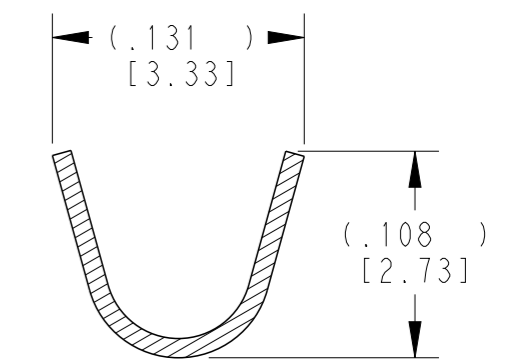
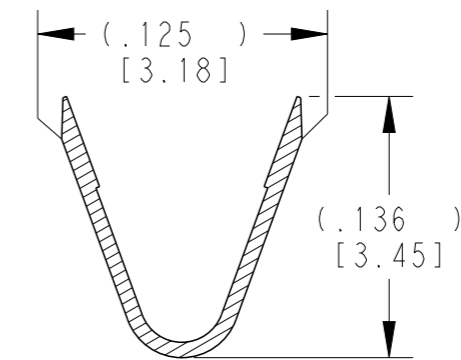
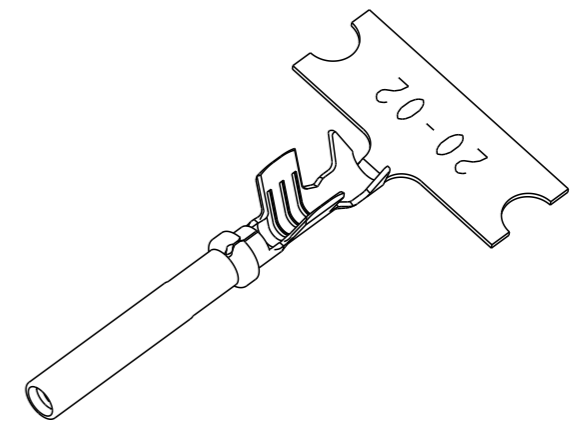
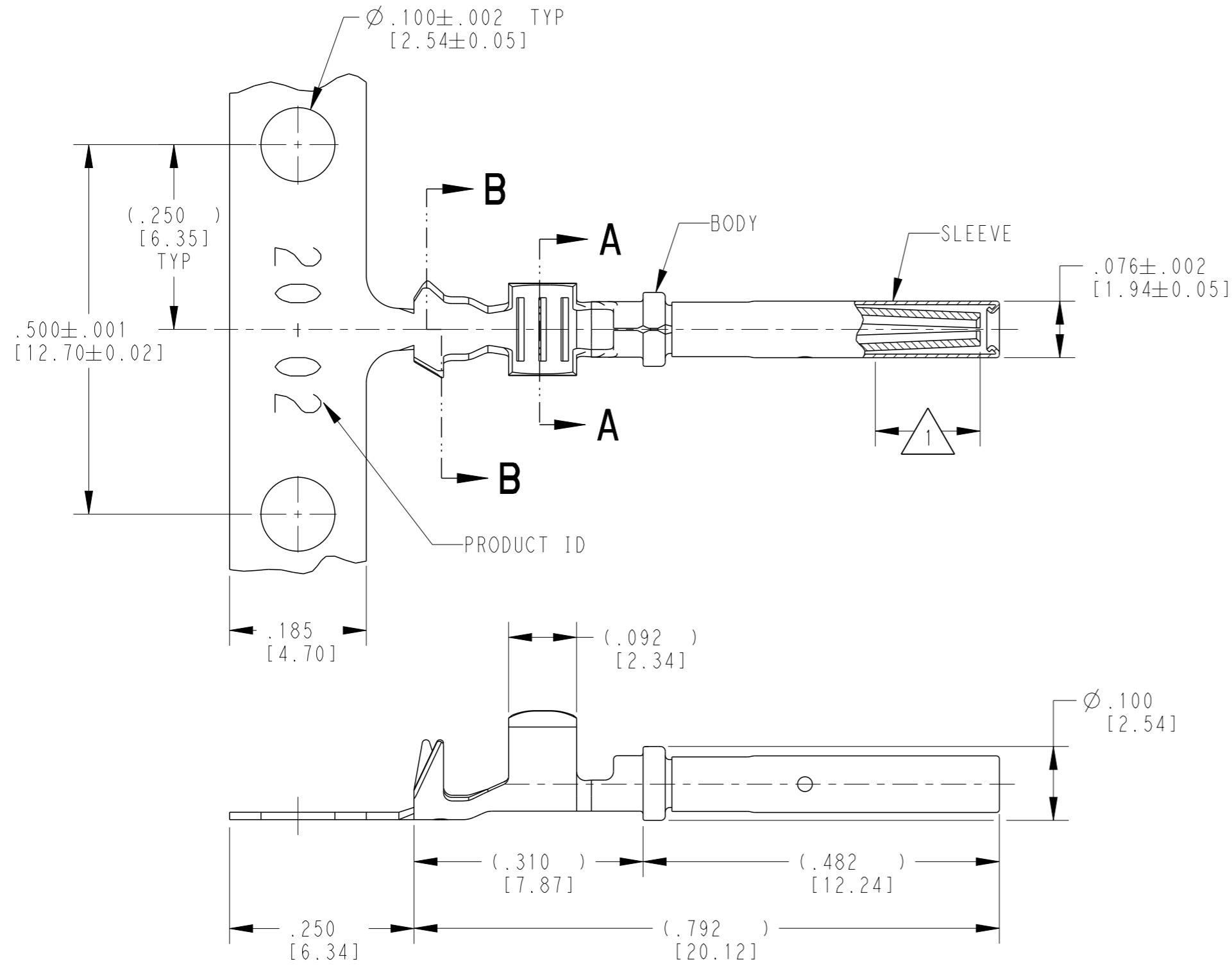


THIS DRAWING IS UNPUBLISHED. RELEASED FOR PUBLICATION 2018  
 © COPYRIGHT 2018 BY - ALL RIGHTS RESERVED.

REVISIONS					
P	LTR	DESCRIPTION	DATE	DWN	APVD
E		REVISED PER E.O. P20392	03DEC2009		RDR
F		REVISED PER PCN :E-18-007949	23MAY2018	DD	DM



**SECTION A-A**  
WIRE BARREL

**SECTION B-B**  
INSULATION BARREL

3 MATERIAL:  
 BODY: .010 [0.25] THICK COPPER ALLOY  
 SLEEVE: STAINLESS STEEL

2. WIRE RANGE: 22 AWG TO 16 AWG [0.35-1.5 mm<sup>2</sup>]  
 INSULATION RANGE: Ø.051-.085 [Ø1.30-2.16]

1 APPLIES ONLY TO SELECTIVE GOLD 1062-20-0244.  
 INDICATED DIMENSION SHOWS GOLD PLATED AREA.

NOTES: UNLESS OTHERWISE SPECIFIED

THIS DRAWING IS A CONTROLLED DOCUMENT.		DWN J. APOSTOL 02DEC2009
DIMENSIONS: INCHES [mm]		CHK D. MEYER 02DEC2009
TOLERANCES UNLESS OTHERWISE SPECIFIED:		APVD R. REED 03DEC2009
0 PLC ±	1 PLC ±	PRODUCT SPEC 0425-015-0000
2 PLC ±	3 PLC ±.025 [0.64]	APPLICATION SPEC 114-151003
4 PLC ±	ANGLES ±	WEIGHT 0.21 g
MATERIAL 3	FINISH	CUSTOMER DRAWING
SEE TABLE		SCALE 6:1 SHEET 1 OF 1 REV F

TE INTERNAL PN	DEUTSCH PN	PLATING
1062-20-0222	1062-20-0222	NICKEL
1062-20-0244	1062-20-0244	SELECTIVE GOLD
1062-20-0277	1062-20-0277	TIN



NAME STAMPED CONTACT SOCKET SIZE 20			
SIZE A3	CAGE CODE 4AFU8	DRAWING NO. C=1062-20-02XX	RESTRICTED TO -

## X-ON Electronics

Largest Supplier of Electrical and Electronic Components

*Click to view similar products for [Terminals category](#):*

*Click to view products by [TE Connectivity manufacturer](#):*

Other Similar products are found below :

[00-054007-01074-6](#) [00-054007-70206-1](#) [00-054007-70210-8](#) [00-054007-70217-7](#) [00-054007-70228-3](#) [00-054007-70256-6](#) [00-054007-70316-7](#) [00-054007-49560-4](#) [00-054007-70209-2](#) [00-054007-70231-3](#) [00-054007-70241-2](#) [00-054007-70242-9](#) [00-054007-70246-7](#) [00-054007-70263-4](#) [00-054007-70288-7](#) [00-054007-70290-0](#) [00-054007-70300-6](#) [00-054007-70304-4](#) [01-2900-1-04412](#) [00581P0075](#) [600TS-10](#) [605601-1](#) [60598-1-CUT-TAPE](#) [60617-1-C](#) [61314-6-C](#) [61810-3](#) [62149-1](#) [626-0194](#) [63-S](#) [M55155/059I03](#) [M55155/079C01](#) [M55155/099B03](#) [M55155/099H02](#) [M55155/109H01](#) [M55155/12XH05](#) [M55155/29-5S](#) [M55155/29XJ08](#) [M55155/30-6S](#) [M55155/30-9S](#) [M55155/30XI09](#) [M6-14RSX](#) [696683-1](#) [696861-1](#) [696999-1](#) [M86700006](#) [D18-110B-C](#) [D18-110B-M](#) [701-1936](#) [701-1955](#) [701-2003](#)