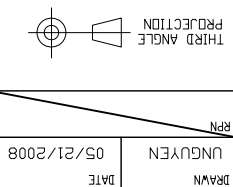


UNLESS OTHERWISE SPECIFIED
DIMENSIONS ARE IN
MILLIMETERS
METRIC DIMENSIONS ARE IN
BRACKETS.

DECIMAL TOLERANCES
.XXX ± 0.005
.XX ± 0.01
.X ± 0.1
X ± 1 DEG.

ANGLE TOLERANCE
X ± 1 DEG.



DRAWN
UNGVYEN
DATE
05/21/2008

DD NOT SCALE THIS DRAWING
SHEET 1 OF 2

SIZE
B
CODE IDENT. NO.
06090

TITLE
BOOT, STRAIGHT,
OVEREXPANDED

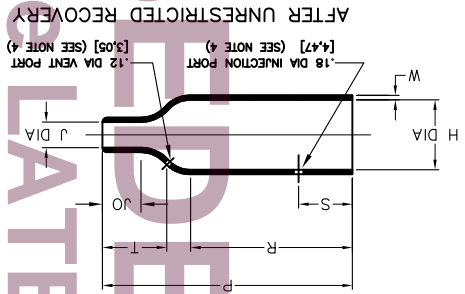
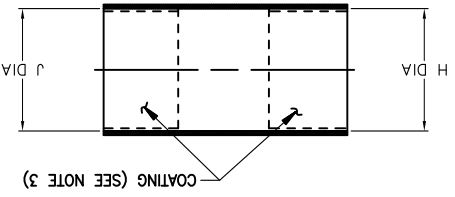
TE Connectivity

202A111 thru 196

CUSTOMER DRAWING
Raychem Molded Parts

PART NUMBER	H			J		
	Min	Max	Min	Min	Max	Min
202A111	.65	.65	.31	.47	.65	.15
202A121	.97	.92	.39	.70	.92	.21
202A132	1.12	1.03	1.05	1.12	.80	1.05
202A142	1.22	1.22	1.22	.70	1.00	1.22
202A153	1.68	1.68	1.68	1.08	1.68	1.07
202A163	2.04	2.04	2.04	1.39	2.04	1.90
202A174	2.60	2.60	2.60	2.13	2.60	2.13
202A185	3.40	3.40	3.40	2.25	3.40	2.81
202A196	4.45	4.45	4.45	3.40	4.45	3.40

TABLE OF DIMENSIONS



AFTER UNRESTRICTED RECOVERY

- NOTES
1. ALL DIMENSIONS ARE IN MILLIMETERS
 2. DIMENSIONS APPEARING IN TABLE ARE AS FOLLOWS:
a - AS SUPPLIED
b - AFTER UNRESTRICTED RECOVERY
 3. COATING (ADHESIVE) IS OPTIONAL
AS SUPPLIED DIMENSIONS APPEARING IN TABLE ARE FOR UNCOATED PARTS.
WHEN COATING IS ADDED, ENTRY DIAMETERS WILL BE REDUCED BY .06 MAX.
 4. MOLDING PORTS ARE OPTIONAL.
WHEN -00 MODIFICATION NUMBER IS SPECIFIED MOLDING PORTS WILL BE LOCATED AS SHOWN.

REVISIONS	DATE	DESCRIPTION	Y
	07/01/15	REVISED PER ECD-15-010088	

REVISION

COMPATIBILITY CHART

MATERIAL DASH NO.	MATERIAL DESCRIPTION	RT SPEC	COATING SLASH NO.	COATING SPEC	COATING DESCRIPTION
-3	POLYOLEFIN, SEMI-RIGID	RT-301	/42; /86	S-1017; S-1048	ADHESIVE
-4	POLYOLEFIN, FLEXIBLE	RT-1304	/164; /86; /180	S-1017; S-1048; S-1030	ADHESIVE
-5	ELASTOMER, FLEXIBLE	RT-501	/42;	S-1017	ADHESIVE
-6	SILICONE	RT-602	N/A		
-12	FLUOROELASTOMER	RT-1312	N/A		
-25	ELASTOMER, FLUID RESISTANT	RW-2070	/42; /86; /225	S-1017; S-1048; S-1206	ADHESIVE
-100	POLYOLEFIN, SEMI-FLEXIBLE	RT-1323	/180; /184; /86	S-1030; S-1048	ADHESIVE
	ZEROHAL				

ORDERING INFORMATION

BASE PART NUMBER _____ 202A1XX
 MATERIAL DASH NUMBER _____ -XXX
 MODIFICATION NUMBER _____ -XX
 ADHESIVE SLASH NUMBER _____ /XX

(SEE COMPATIBILITY CHART)
 (IF NECESSARY, SEE COMPATIBILITY CHART)

CUSTOMER DRAWING

SIZE	DWG. NO.	REV.	DWG. NO.	REV.
B	06090	Y	06090	Y

202A111thru196

DD NOT SCALE THIS DRAWING

1

2

3

4

1

2

3

4

A

B

C

D

A

B

C

D

X-ON Electronics

Largest Supplier of Electrical and Electronic Components

Click to view similar products for [Heat Shrink Cable Boots & End Caps](#) category:

Click to view products by [TE Connectivity](#) manufacturer:

Other Similar products are found below :

[577159N001](#) [007758-000](#) [610368N003](#) [645494-000](#) [M85049/141-02HU](#) [M85049/141-03HU](#) [M85049/141-04HU](#) [687025-000](#) [705331-000](#)
[718446-000](#) [725666N001](#) [729257-000](#) [F21914-000](#) [F27131-000](#) [F85868-000](#) [770-006A103R](#) [770-006A304W1](#) [770-006A305W1](#) [770-](#)
[006A308W1](#) [770-011T303W1](#) [770-011T304W1](#) [770-020S702W1](#) [770-020S704W1](#) [806138-000](#) [806542N001](#) [807507-000](#) [808059-000](#)
[808296-000](#) [808362-000](#) [808828-000](#) [809125-000](#) [809130-000](#) [809218-000](#) [811218-000](#) [811288-000](#) [812014-000](#) [812047-000](#) [813166-000](#)
[813767N002](#) [814417-000](#) [819115N001](#) [819117N001](#) [823026-000](#) [823070-000](#) [825002-000](#) [841189N001](#) [861471-000](#) [866647-000](#) [937577-](#)
[000](#) [950764-000](#)