

C. J. [Signature] / 10-15-92
 APPROVED BY/DATE
 REV. 2

SAFETY ORGANIZATION(S):

THIS FILTER HAS BEEN FORMALLY RECOGNIZED, CERTIFIED OR APPROVED BY THE LISTED AGENCY. THEREFORE, ALL TEST/REQUIREMENTS SPECIFIED IN THE LATEST REVISION OF THE FOLLOWING AGENCY STANDARDS HAVE BEEN MET.

UL RECOGNIZED
 CSA CERTIFIED
 VDE APPROVED

OPERATING SPECIFICATIONS:

LINE VOLTAGE/CURRENT,
 10 AMP., 120/250 VAC
 8 AMP./40°C, 250VAC
 50-60Hz
 LINE FREQUENCY,
 1.25MA @ 120V 60Hz
 MAX. LEAKAGE CURRENT, EACH
 LINE TO GROUND
 2.10MA @ 250V 50Hz
 OPERATING AMBIENT TEMP. RANGE,
 -10°C TO +40°C @ RATED CURRENT, I_R

IN AN AMBIENT, T_a, HIGHER THAN 40°C, THE MAXIMUM OPERATING CURRENT, I_o, IS AS FOLLOWS:

$$I_o = I_r \sqrt{\frac{95 - T_a}{45}}$$

RELIABILITY SPECIFICATIONS:

STORAGE TEMPERATURE,
 -25°C TO +85°C
 HUMIDITY,
 21 DAYS @ 40°C 95% RH
 CURRENT OVERLOAD TEST,
 6 TIMES RATED CURRENT FOR 8 SECONDS
 TEST SPECIFICATIONS,
 INDUCTANCE,
 N 7.89 mH NOMINAL
 L 7.83 mH NOMINAL
 CAPACITANCE, MEASURED @ 1 KHz, 0.25 VAC MAX., 25°C ±1°C
 LINE TO GROUND,
 .0155µF ±20%
 LINE TO LINE,
 1.15 µF ±20%
 DISCHARGE RESISTOR,
 270KΩ
 LINE/GROUND AND LINE/LINE
 INSULATION RESISTANCE
 5000 MΩ (MIN) AT 100 VDC
 (W/O DISCHARGE RESISTOR)
 20°C AND 50% RH

RECOMMENDED RECEIVING INSPECTION HIPOIT.

LINES TO GROUND,
 2250 VDC FOR 1 MINUTE
 LINE TO LINE,
 1450 VDC FOR 1 MINUTE

FILTER APPROVAL:

THE BEST WAY TO SELECT AND QUALIFY A FILTER IS FOR YOUR ENGINEERING TO TEST THE UNIT IN YOUR EQUIPMENT.

TOLERANCE EXCEPT AS NOTED

DECIMAL, .XXX .XX .X ANGLES
 METRIC, ± .025 ± .1°

FINISH:
 AS SUPPLIED

SCALE: NTS DATE: 8-5-90 Dwg. NO.: 10VN1.02
 50% OF CFM ORIGINAL REV. OF CFM

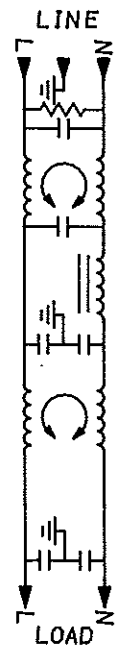
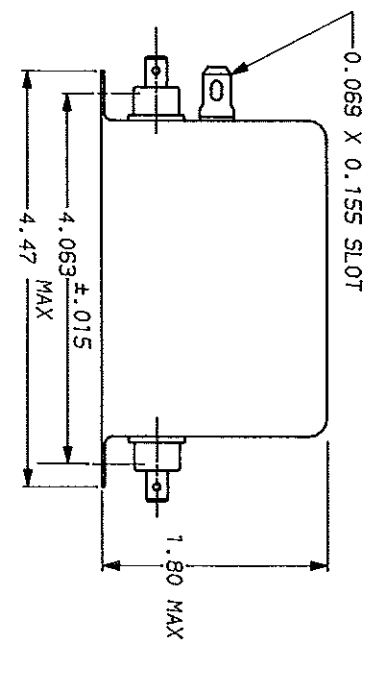
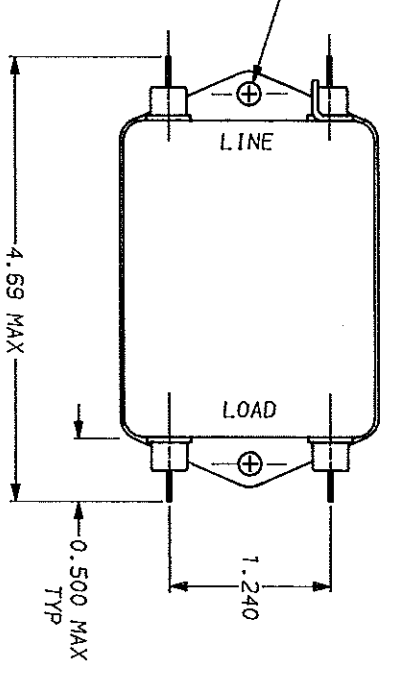


POWER LINE FILTER

50p - 50p (MINIMUM) INSERTION LOSS

FREQUENCY MHZ	01	03	04	05	1	15	5	10	20	30
COMMON DB	8	8	8	8	44	55	75	70	70	60
DIFF. DB	8	8	8	8	35	45	72	70	72	75

This document is property to CORCOM INC. and is not to be reproduced nor used for manufacturing purposes except on CORCOM's order or prior written consent.



X-ON Electronics

Largest Supplier of Electrical and Electronic Components

Click to view similar products for [Power Line Filters](#) category:

Click to view products by [TE Connectivity](#) manufacturer:

Other Similar products are found below :

[6609019-3](#) [6609026-5](#) [6609030-6](#) [6609973-2](#) [D30A](#) [7-1609090-5](#) [F2810](#) [F4456A](#) [F7382Z](#) [F7863Z](#) [FAHAV3100ZC000](#) [806276](#) [FN2020B-1-06](#) [FN2080B-10-06](#) [FN2410H-32-33](#) [FN2410H-80-34](#) [FP144](#) [FS4153-20-06](#) [FS4353-500-99](#) [12-MMB-030-11-D](#) [DB4-393](#) [15811T200](#) [20B1](#) [LC630](#) [2B1](#) [1609080-2](#) [1609993-8](#) [1-6609070-1](#) [F1100AA02](#) [F1150CC10](#) [F1500CA10](#) [F1500CA15](#) [F4041Z](#) [F7585E](#) [1B1](#) [FN2070A-16-06](#) [FN2090A-20-06](#) [FN2090B-12-06](#) [FN2090Z-1-06](#) [FN2410H-25-33](#) [FN2410H-60-34](#) [FN2410H-8-44](#) [FN2412H-8-44](#) [FN323B-6-01](#) [FN3258H-130-35](#) [FN610R-3-06](#) [20EHQ7](#) [20EHZ7](#) [20K1](#) [30B6](#)