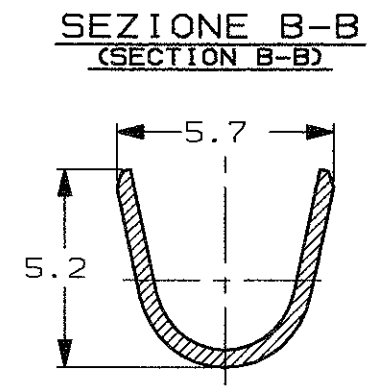
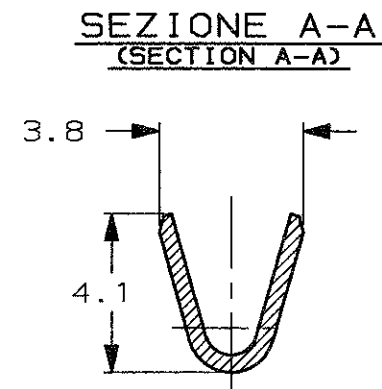
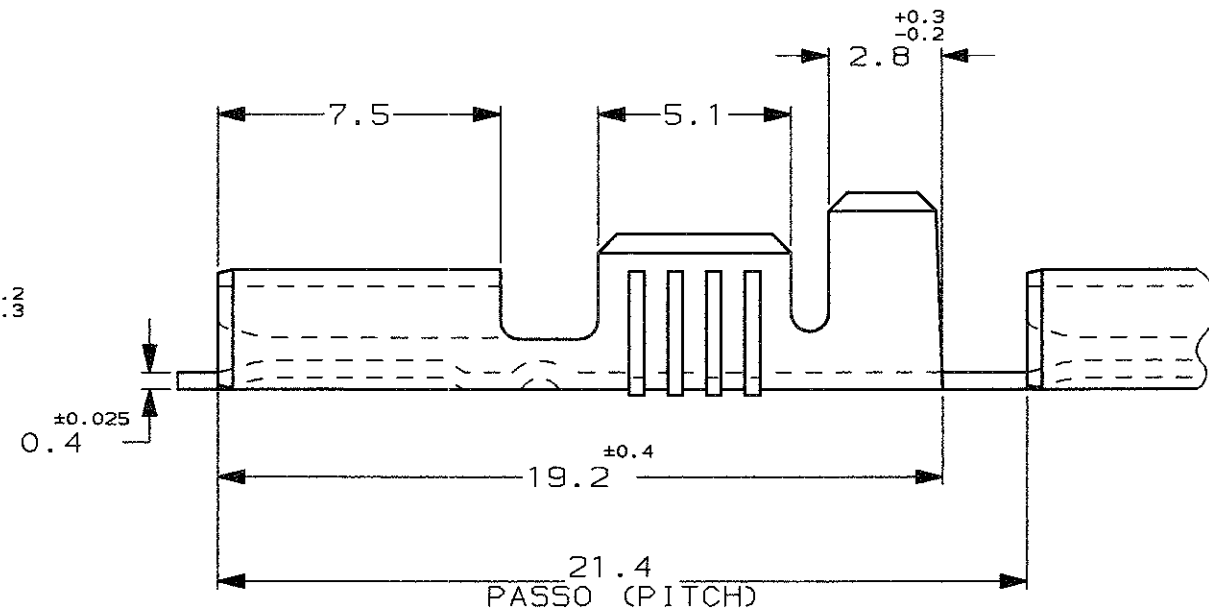
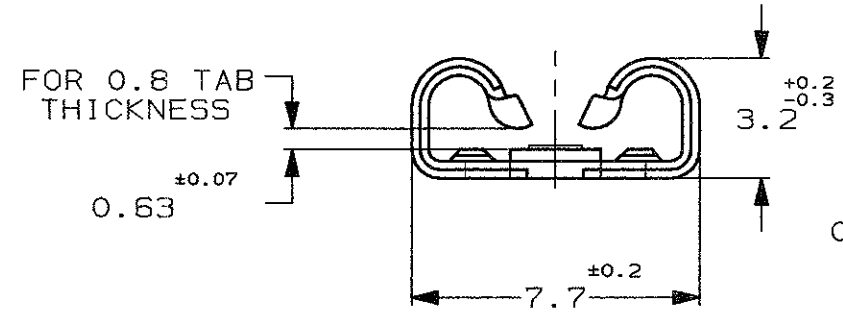
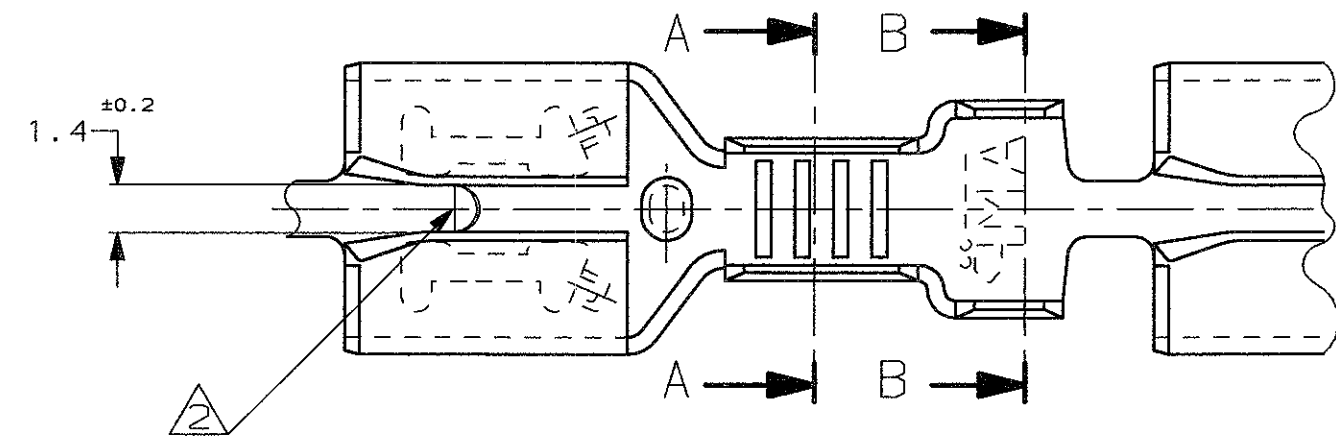


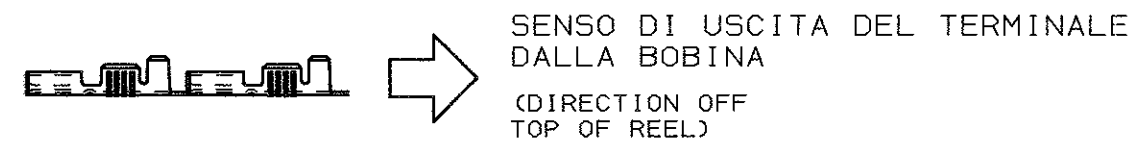
SCALA NON IMPEGNATIVA  
(DO NOT SCALE)  
DIMENSIONI IN mm  
(DIMENSIONS IN mm)

**METRIC**

PROIEZIONE EUROPEA  
(EUROPEAN PROJECTION)



1) STATO DI FORNITURA - SCALA 1:1 -  
(SUPPLY CONDITION - SCALE 1:1)



2) VERSIONE SENZA DIMPLE, SPECIFICA DI PRODOTTO 108-19076  
(SPECIAL VERSION WITHOUT DIMPLE, PRODUCT SPEC. 108-19076).

3) OBSOLETE PARTS: OBSOLETE CIS STREAMLINING PER D.RENAUD/D.SINISI

2	PRE STAGNATO (PRE-TIN PLATED)	OTTONE (BRASS)	1-100605-2	H	
3	OBSOLETE	STAGNATO (TIN PLATED)	BRONZO FOSF. (PH. BRONZE)	0-100605-8	G
		STAGNATO (TIN PLATED)	BRONZO FOSF. (PH. BRONZE)	0-100605-7	G
3	OBSOLETE	STAGNATO (TIN PLATED)	OTTONE (BRASS)	0-100605-2	G
	NOTE	FINITURA / COLORE (FINISH / COLOUR)	MATERIALE (MATERIAL)	NUMERO (AMP P/N)	REV

CUSTOMER DWG. FOR REFERENCE ONLY		DISEGNO PER CLIENTE SOLO PER RIFERIMENTO	
THIS DRAWING IS UNPUBLISHED		RELEASE FOR PUBLICATION 19	
© COPYRIGHT 19 BY AMP INCORPORATED, HARRISBURG, PA. ALL INTERNATIONAL RIGHT RESERVED. AMP PRODUCTS MAY BE COVERED BY U.S. AND FOREIGN PATENT AND/OR PATENT PENDING			
TOLLERANZE, SE NON DIVERSAMENTE SPECIFICATO (TOLERANCES, UNLESS OTHERWISE SPECIFIED)		DIAM. ISOLANTE (INS. DIA. RANGE) mm	RANGO FILO (WIRE RANGE) mm <sup>2</sup>
± 0.3		3.0-4.3	1.0-2.5
ANGOLI (ANGLES) ± 2°		SCALA (SCALE) 5:1	
DIS. H. YAALI (DR.) 10 DEC 99		DESCRIZIONE (DESCRIPTION) FASTON® Connector, .250" sr. LIF REC. CONTACT.	
CONT. C. TARTARI (CHK) 10 DEC 99		LOC. SIZE	NUMERO (DWG NO)
APP. (APP.)		I A3	C-100605
DIS. DATA (DR) (DATE)		REV. H1	FOGLIO (SHEET) 1 DI (OF) 1

H1	REVISED PER ECO-09-022178	KK	21SEP09
H	CHANGED RAW MAT FOR 1--2	H.Y	15 SEP 2000
G	ET00-0200-00 OBSOLETE PARTS	H.Y	08 MAR 2000
F	ET00-0054-00 ADDED P/N.s	H.Y	31 MAR 2000
E1	ET00-0085-00 REVISION	H.Y	15 FEB 2000
E	ET00-0028-00 REVISION & REDRAWN	H.Y	10 DEC 99
E	ET00-0390-99 REVISION	H.Y	10 DEC 99
REV. (REV. L.M.)	REVISIONI (REVISION RECORD)	DIS. (DR)	DATA (DATE)

DISTRIBUZIONE (PRINT DIST.)

## X-ON Electronics

Largest Supplier of Electrical and Electronic Components

*Click to view similar products for [FFC & FPC Connectors](#) category:*

*Click to view products by [TE Connectivity](#) manufacturer:*

Other Similar products are found below :

[FPH-1422G](#) [FPH-1602G](#) [K-FC20](#) [FPH-2022G](#) [AYF332735](#) [52610-1075](#) [52610-1275](#) [52610-1934](#) [501864-3091-TR225](#) [086222026001800](#)  
[52610-0675](#) [62684-36210E9ALF](#) [52746-1671-TR250](#) [10051922-2810EHLF](#) [6-520415-9](#) [SFV6R-1STE9HLF](#) [XF3M-2915-1B-R100](#)  
[1658549-1](#) [AYF534065TA](#) [AYF351525](#) [086212040340800+](#) [67000-014LF](#) [67000-004LF](#) [006207341915000+](#) [DS1020-19RT1D](#) [67000-](#)  
[003LF](#) [67000-011LF](#) [67000-016LF](#) [HFW14R-2STE9LF](#) [SFV32R-2STBE9HLF](#) [SFW12R-5STE9LF](#) [SFW18R-1STAE9LF](#) [SFW4R-5STE9LF](#)  
[52807-0430](#) [046283021002868+](#) [THD1015-8CL-SN](#) [67000-006LF](#) [502250-8027](#) [104267-9617](#) [66987-011LF](#) [AYF362535](#) [F0501-T-50-20T-](#)  
[R](#) [F1003-ZV-12-25T-R](#) [HFW8S-2STAE1HLF](#) [67000-008LF](#) [67000-012LF](#) [ECC576069EU](#) [F1002-B-20-20T-R](#) [HFW15S-2STAE1HLF](#)  
[HFW22R-2STE1H1LF](#)