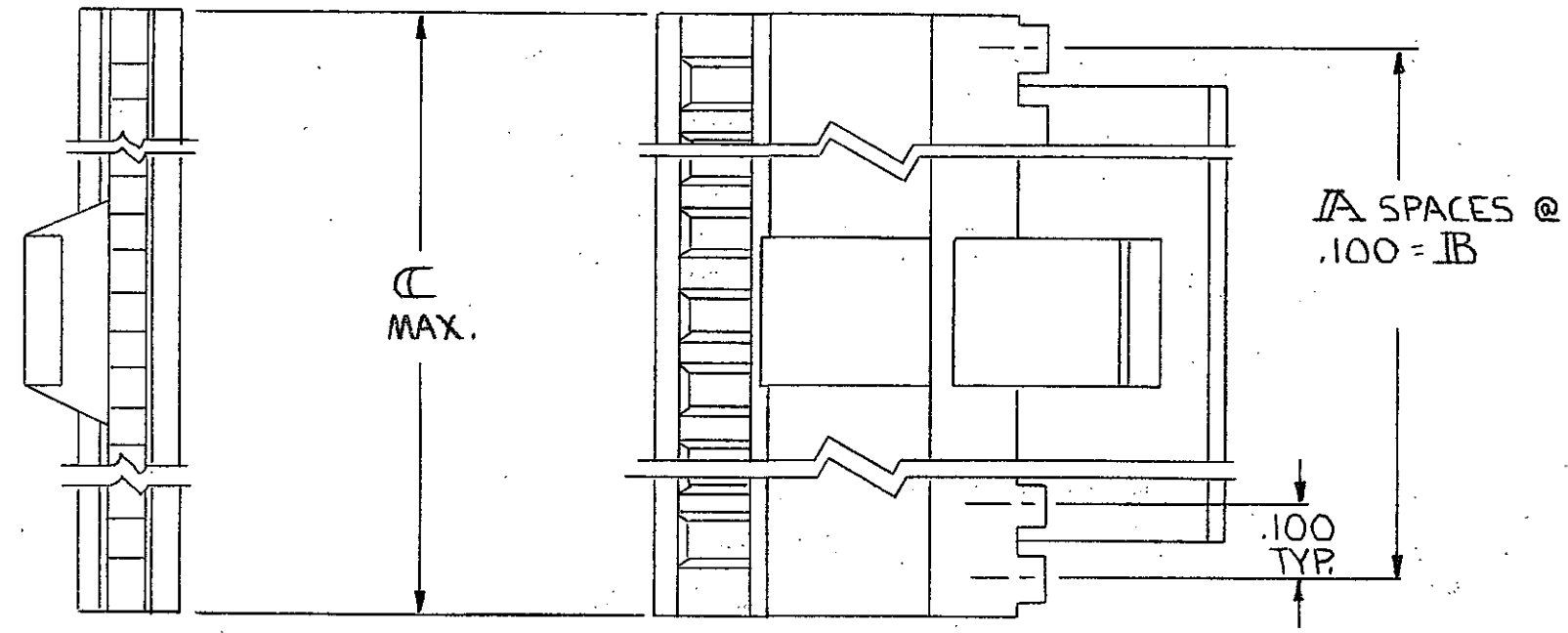
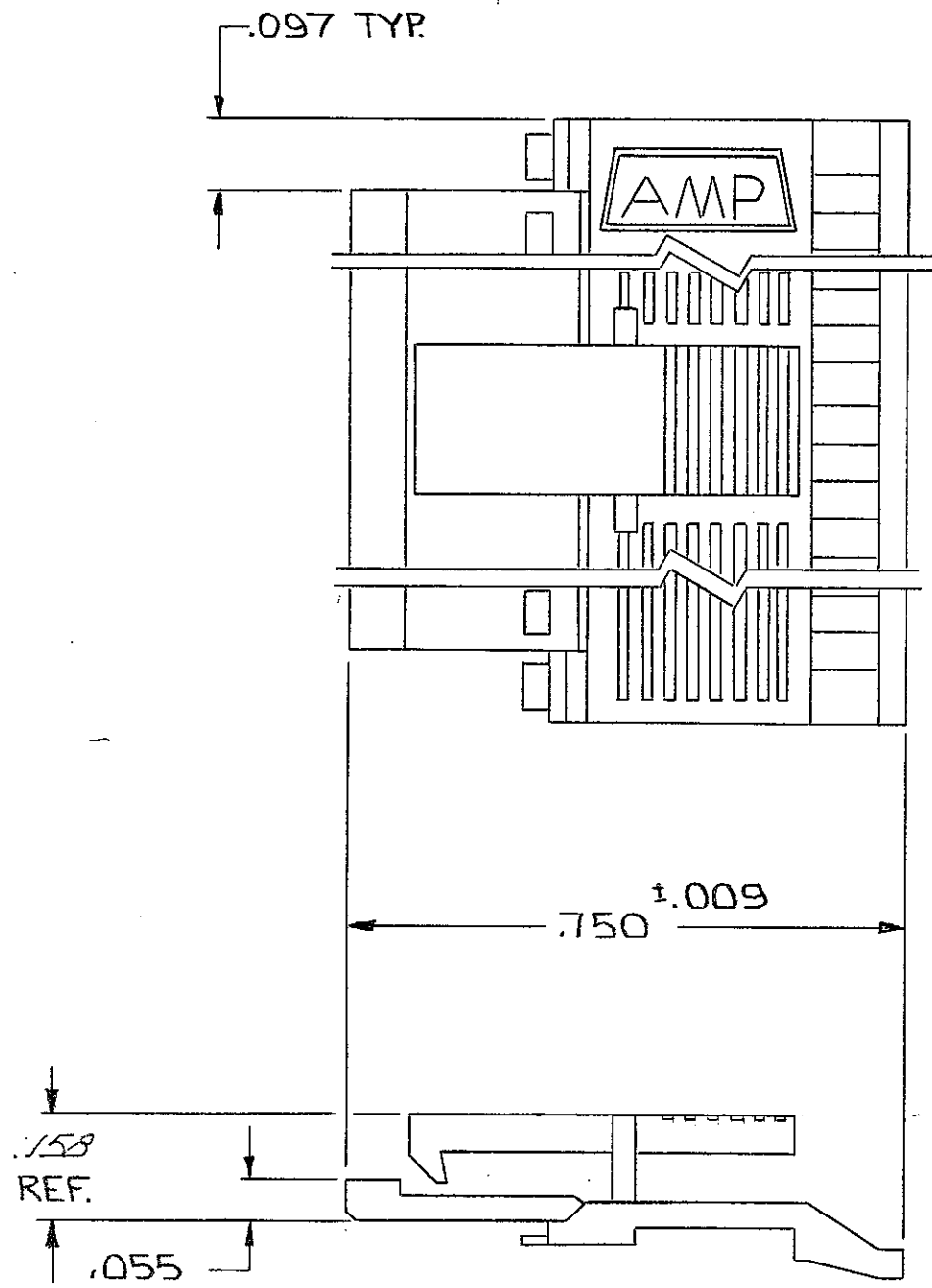


REVISIONS							
P	F	ZONE	LTR	DESCRIPTION	DATE	DWN	APVD
0			F	REVISED PER ECO-15-008006	17NOV2015	NK	MM



3.600	3.500	35	72	3-102681-1	-1
3.500	3.400	34	70	3-102681-2	-2
3.400	3.300	33	68	2-102681-3	-3
3.300	3.200	32	66	2-102681-4	-4
3.200	3.100	31	64	2-102681-5	-5
3.100	3.000	30	62	2-102681-6	-6
3.000	2.900	29	60	2-102681-7	-7
2.900	2.800	28	58	2-102681-8	-8
2.800	2.700	27	56	2-102681-9	-9
2.700	2.600	26	54	2-102681-10	-10
2.600	2.500	25	52	2-102681-11	-11
2.500	2.400	24	50	2-102681-12	-12
2.400	2.300	23	48	1-102681-13	-13
2.300	2.200	22	46	1-102681-14	-14
2.200	2.100	21	44	1-102681-15	-15
2.100	2.000	20	42	1-102681-16	-16
2.000	1.900	19	40	1-102681-17	-17
1.900	1.800	18	38	1-102681-18	-18
1.800	1.700	17	36	1-102681-19	-19
1.700	1.600	16	34	1-102681-20	-20
1.600	1.500	15	32	1-102681-21	-21
1.500	1.400	14	30	1-102681-22	-22
1.400	1.300	13	28	1-102681-23	-23
1.300	1.200	12	26	1-102681-24	-24
1.200	1.100	11	24	1-102681-25	-25
1.100	1.000	10	22	1-102681-26	-26
1.000	.900	9	20	1-102681-27	-27
.900	.800	8	18	1-102681-28	-28
.800	.700	7	16	1-102681-29	-29
.700	.600	6	14	1-102681-30	-30
.600	.500	5	12	102681-1	-1
C	B	A	NO. OF POS.	PART NO	

- 1. NO. OF POS. PERTAINS TO HOUSING SIZE.
- 2. THIS COVER TO BE USED WITH 102536.
- △ OBSOLETE PART NUMBER

UNLESS OTHERWISE SPECIFIED DIMENSIONS ARE IN INCHES. TOLERANCES ON: DECIMALS ±.005 ANGLES ±	CONTRACT NO 10-31-80	TE Connectivity NAME COVER-HALF, LATCH, MASS TERMINATION, AMPMODU, .100 €, FULL BAR POLARIZATION	
	MATERIAL FLAME RETARDANT THERMOPLASTIC COLOR= BLACK FINISH		
OTHER APPD		SCALE	SHEET 1 OF 1

X-ON Electronics

Largest Supplier of Electrical and Electronic Components

Click to view similar products for [Headers & Wire Housings](#) category:

Click to view products by [TE Connectivity](#) manufacturer:

Other Similar products are found below :

[892-18-020-10-001101](#) [58102-G61-06LF](#) [582553-1](#) [0009485154](#) [009176003701906](#) [0050291907](#) [LY20-4P-DT1-P1E-BR](#) [02.125.8002.8](#)
[609-3404](#) [61062-3](#) [61082-181009](#) [622-3653LF](#) [63453-116](#) [636-1030](#) [636-1427](#) [636-3427](#) [636-4007](#) [641938-9](#) [641991-4](#) [644827-2](#) [65817-](#)
[010LF](#) [65817-015LF](#) [65863-015LF](#) [66207-023LF](#) [67095-007LF](#) [67601157](#) [68645-018](#) [68648-049](#) [70.362.1628.0](#) [70-4210](#) [70-4226B](#) [70-](#)
[4853B](#) [707-5020](#) [707-5028](#) [71.350.2428.0](#) [71918-208LF](#) [71961-016LF](#) [733-134](#) [733-162](#) [754199-000](#) [760-3052](#) [787-8014-00](#) [79531-3000](#)
[FCN-360C032-B](#) [FCN-367T-T012/H](#) [FCN-723D010/2](#) [80.063.4001.1](#) [800-90-001-10-001000](#) [800-90-010-10-002000](#) [801-43-002-10-013000](#)