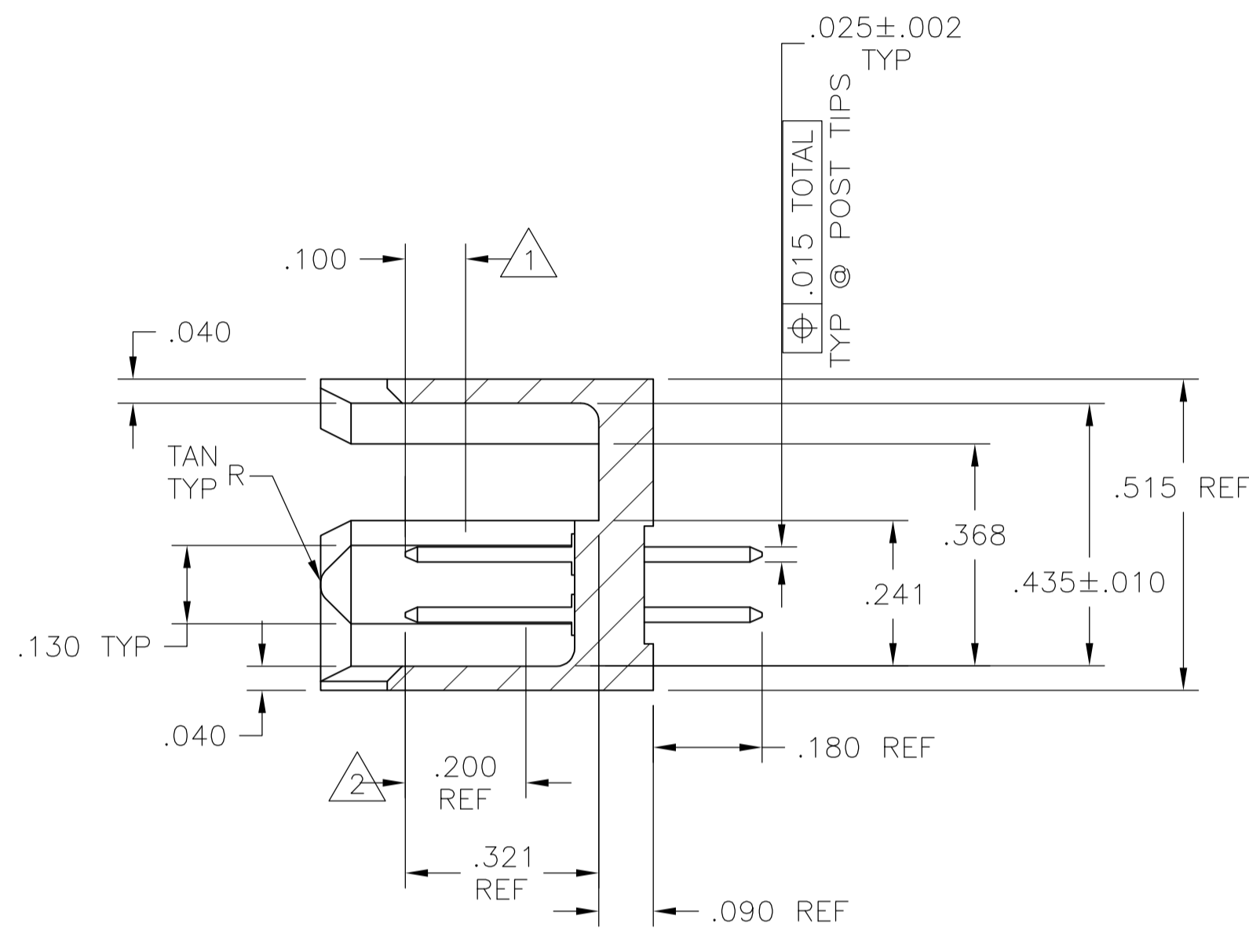
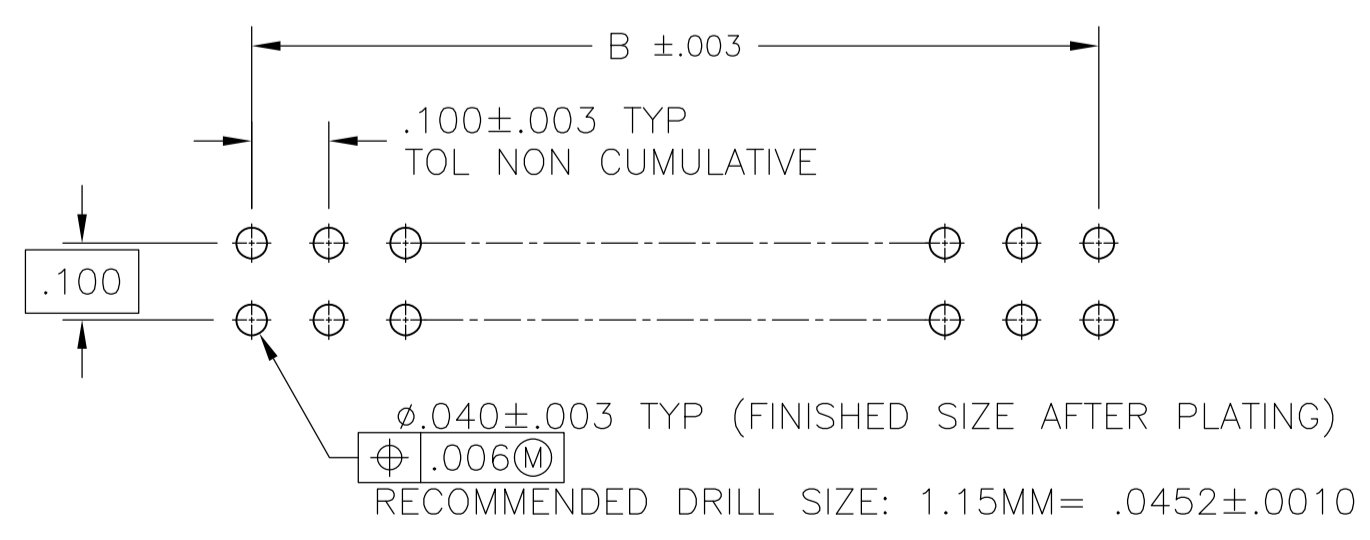


LOC		DIST		REVISIONS			
F	LTR	PER	ECO	DATE	DN	APVD	
LS	REVISED	PER	ECO-13-015097	25SEP2013	KH	JO	



SECTION X-X

- 1 POINT OF MEASUREMENT FOR PLATING THICKNESS.
- 2 FINISH OVER INDICATED AREA: .000030 GOLD OVER .000050 NICKEL.
- 3 FINISH OVER INDICATED AREA: .000100-.000200 BRIGHT TIN LEAD OVER .000050 NICKEL.
- 4 RECESSED DATE CODE AND LOGO.
- 5 OBSOLETE PART NUMBER.
- 6 PRELIMINARY PART - NOT RELEASED FOR PRODUCTION
- 7 FINISH OVER INDICATED AREA: .000100-.000200 MATTE TIN OVER .000050 NICKEL.
- 8 ROHS 2002/95/EC COMPLIANT
- 9 OBSOLETE PARTS: OBSOLETE CIS STREAMLINING PER D.RENAUD/D.SINISI



RECOMMENDED HOLE SIZE

NO. OF POSN	A	B	C ±.010	D	E	PART NUMBER
12	26	8	7-102692-9			
12	160	8	7-102692-8			
46	94	8	7-102692-7			
21	44	8	7-102692-6			
6	14	8	7-102692-5			
89	180	8	7-102692-4			
73	148	8	7-102692-3			
63	128	8	7-102692-2			
69	140	8	7-102692-1			
64	130	8	7-102692-0			
42	86	8	6-102692-9			
35	72	8	6-102692-8			
14	30	8	6-102692-7			
9	20	8	6-102692-6			
7	16	8	6-102692-5			
34	70	8	6-102692-4			
19	40	8	6-102692-3			
44	90	8	6-102692-2			
99	200	8	6-102692-1			
54	110	8	6-102692-0			
59	120	8	5-102692-9			
49	100	8	5-102692-8			
47	96	8	5-102692-7			
39	80	8	5-102692-6			
29	60	8	5-102692-5			
24	50	8	5-102692-4			
17	36	8	5-102692-3			
11	24	8	5-102692-2			
5	12	8	5-102692-1			
12	26	2	2-102692-9			
79	160	2	2-102692-8			
46	94	2	2-102692-7			
21	44	2	2-102692-6			
6	14	2	2-102692-5			
89	180	2	2-102692-4			
73	148	2	2-102692-3			
63	128	2	2-102692-2			
69	140	2	2-102692-1			
64	130	2	2-102692-0			
42	86	1	1-102692-9			
35	72	1	1-102692-8			
14	30	1	1-102692-7			
9	20	1	1-102692-6			
7	16	1	1-102692-5			
34	70	1	1-102692-4			
19	40	1	1-102692-3			
44	90	1	1-102692-2			
99	200	1	1-102692-1			
54	110	1	1-102692-0			
59	120		102692-9			
49	100		102692-8			
47	96		102692-7			
39	80		102692-6			
29	60		102692-5			
24	50		102692-4			
17	36		102692-3			
11	24		102692-2			
5	12		102692-1			

THIS DRAWING IS A CONTROLLED DOCUMENT.

DIMENSIONS: INCHES
 TOLERANCES UNLESS OTHERWISE SPECIFIED:
 0 PLC ± -
 1 PLC ± -
 2 PLC ± -
 3 PLC ± .005
 4 PLC ± -
 ANGLES ± -
 MATERIAL: HEADERS: GLASS FILLED FLAME RETARDANT THERMOPLASTIC COLOR: BLACK POST: COPPER ALLOY
 FINISH: SEE TABLE

DWN: B. HAYMAKER 11JAN01
 CHK: J. GESFORD 12NOV98
 APVD: J. GESFORD 12NOV98
 NAME: NAME
 PRODUCT SPEC: PRODUCT SPEC
 APPLICATION SPEC: APPLICATION SPEC
 WEIGHT: WEIGHT
 SIZE: A1
 CAGE CODE: 00779
 DRAWING NO: 102692
 RESTRICTED TO: -
 CUSTOMER DRAWING: CUSTOMER DRAWING
 SCALE: 4:1
 SHEET: 1 OF 1
 REV: 15

STE TE Connectivity
 HEADER ASSEMBLY, MOD II, .100C.100CL, .025 SQ POSTS

X-ON Electronics

Largest Supplier of Electrical and Electronic Components

Click to view similar products for [Board to Board & Mezzanine Connectors](#) category:

Click to view products by [TE Connectivity](#) manufacturer:

Other Similar products are found below :

[589158040000018](#) [FCN-230C068-11](#) [FCN-268F012-G/BD](#) [FCN-268F036-G/BD](#) [FCN-268M012-G/0D](#) [FCN-268M024-G/1D](#) [FCN-723J004/1](#) [MIS-048-01-F-D-DP-K](#) [832-10-034-10-001000](#) [FX4C-80S-1.27DSA](#) [FCN-214Q030-G/0](#) [FCN-234P048-G/0](#) [FCN-235D050-G/C](#) [210-93-314-41-105000](#) [2-22603-0](#) [MDF7-40DP-2.54DSA\(55\)](#) [AXG720047](#) [5031084030](#) [MIT-114-03-F-D-K](#) [55323-1519](#) [DF33-2P-3.3DSA\(24\)](#) [YFT-20-05-H-03-SB-K](#) [503308-3040](#) [026-6203-PDB](#) [027-6203-PDB](#) [069159702701000](#) [10123981-102LF](#) [101A10019X](#) [55650-0588-C](#) [68684-306](#) [75140-7012](#) [589159005003045](#) [194261-1](#) [FCN-268F024-G0D](#) [10124054-515LF](#) [68685-603](#) [8-1616154-3](#) [MIS-019-01-F-D](#) [589159005002045](#) [541371078](#) [IL-WX-10PB-HF-B-E1000E](#) [FCN-268M024-G/3D](#) [20021832-06016C1LF](#) [KX15-20KLDL-E1000E](#) [MDF7-16DP-2.54DSA\(55\)](#) [AXE810124](#) [FCN-214J100-G/0](#) [FCN-230C068-E/S](#) [AXE812124](#) [AXE816124](#)