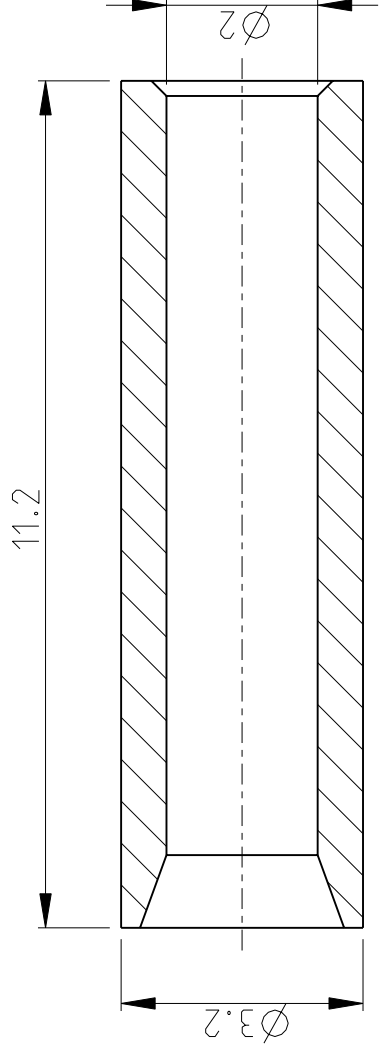
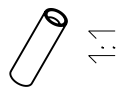


LOC	DIST	REVISONS					
A1	-	P	LTR	DESCRIPTION	DATE	DWN	APVD
		A2	PER ECR - 029123		05DEC2007	GW	BR



Notes

- 1 PACKAGING: 100 PIECES
- 2 WEIGHT: 0.006 KG / 100 PIECES



DIMENSIONS:		DWN	05DEC2007	MATERIAL	-	FINISH	-
mm		G.W	ROBLEW SKI	tyco Electronics			
TOLERANCES UNLESS OTHERWISE SPECIFIED:		CHK	05DEC2007	tyco Electronics AMP GmbH			
0 PLC	±	H.BRAUN		53819 Neunkirchen (Germany)			
1 PLC	±	T.SCHNURPFEIL		NAME			
2 PLC	±	PRODUCT SPEC		ALIGNMENT SLEEVE			
3 PLC	±	APPLICATION SPEC		SERIES - LWL			
4 PLC	±	WEIGHT	-	SIZE		CAGE CODE DRAWING NO	
ANGLES	±1°	CUSTOMER DRAWING		A4 00779		C=1102921	
RESTRICTED TO		SCALE		SHEET		REV	
		10:1		1 OF 1		A2	

2006

RELEASED FOR PUBLICATION

THIS DRAWING IS UNPUBLISHED.
 © COPYRIGHT 2006 BY TYCO ELECTRONICS CORPORATION. ALL RIGHTS RESERVED.

X-ON Electronics

Largest Supplier of Electrical and Electronic Components

Click to view similar products for [Heavy Duty Power Connectors](#) category:

Click to view products by [TE Connectivity](#) manufacturer:

Other Similar products are found below :

[647757-1](#) [6643411-1](#) [6646058-2](#) [6646137-1](#) [6646138-1](#) [6646479-1](#) [6646608-1](#) [6646786-1](#) [6646940-1](#) [6651091-1](#) [6651525-1](#) [6651529-1](#)
[6651788-1](#) [696475-1](#) [702-32-01109](#) [703-25-02205](#) [73000005059](#) [73000005642](#) [73080255059](#) [73080965046](#) [765-15-0080A](#) [765-16-0080B](#)
[765-18-0080D](#) [829992-1](#) [902-77-02113](#) [PS00/A0620/6300](#) [PS25/A0420/63](#) [129-1J](#) [1409400](#) [AN0024023](#) [E6374G1](#) [e6389g2](#) [157-43GW8](#)
[MS3117-14AC](#) [1643543-1](#) [1650540-1](#) [1651811-2](#) [1766260-1](#) [1766282-1](#) [1766966-1](#) [1791340000](#) [NLDFT-3-BL-L-S120-M40A](#) [NLDFT-N-](#)
[W-L-C240-M40B](#) [NLS-2-R-C240-M40B](#) [NLS-N-W-C240-M40B](#) [NPS-3-BL-T6](#) [1986615-1](#) [2-1589900-8](#) [2199314-1](#) [KA8102](#)