

## Quick Reference Guide Spring Fingers

Spring fingers (also known as shield fingers, grounding springs or universal ground contacts) are used in almost every small printed circuit board application. A spring finger is a single contact, surface mountable, internal connector. It provides an electrical connection and grounding from EMI noise and static between a PCB and other electronic components, such as a secondary PCB, shield cam, antenna, or speaker. TE Connectivity offers a wide selection of spring fingers in varying styles and sizes depending on the type of application.

### FEATURES

- Used for grounding between device and PCB
- Provides shielding from vibration from motors, antennas, speakers and microphones
- Used as a connection for stacking applications between primary and secondary PCBs
- Available in effective heights of 0.3mm - 6.5mm
- Requires limited space on a PCB
- Accommodates soldering and pick-and-place using standard equipment

### BENEFITS

- Prevents EMI noise and static
- Provides a highly reliable connection
- Provides an easy and inexpensive method for connecting multiple PCBs
- Allows for versatility in design of the PCB
- Can be designed in at the last minute
- No expensive specialized equipment needed

### APPLICATIONS

- Cell phones, smart phones
- MP3 players
- Digital cameras, camcorders
- GPS units
- eReaders
- Tablets
- PCs and laptops
- Home electronic devices
- Automotive
- Industrial equipment

Applications



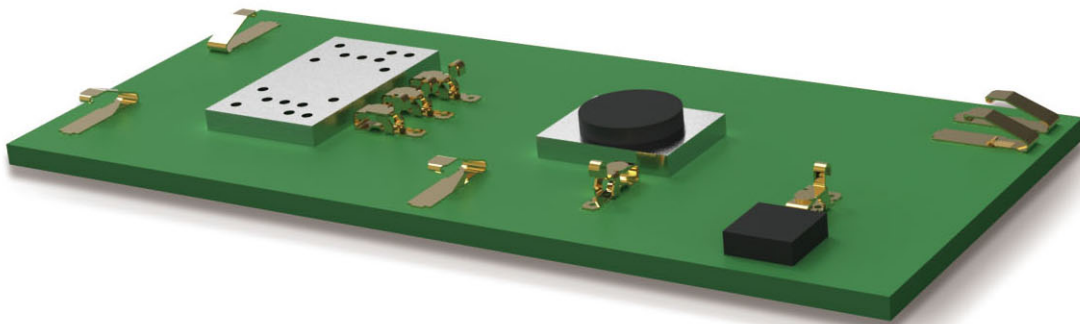
Mobile Devices

- Digital cameras and videos
- Handheld games
- Payment terminals
- Cell phones
- Smart phones
- MP3 players
- GPS
- eReaders



Home Entertainment

- Set top boxes
- Game consoles
- DVD players
- Blu-Ray disc drives



Industrial Equipment

- Security systems
- POS scanners

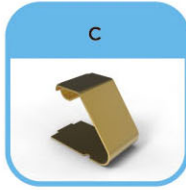


Personal Computing

- Desktop computers
- Notebooks
- Tablets
- Netbooks

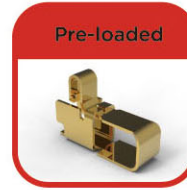
### Types of Spring Fingers

#### Standard-flat contact



Standard Box or C type spring fingers both have simple geometry for easy application.

#### Pre-Loaded-Round or Flat Contact



Pre-loaded spring fingers are recommended when a stable electrical contact with minimal deflection is needed. The force change is minimized over working range of the spring finger.

#### Ultra low profile



Ultra low profile, Y type spring fingers, are used in applications where low effective heights are needed.

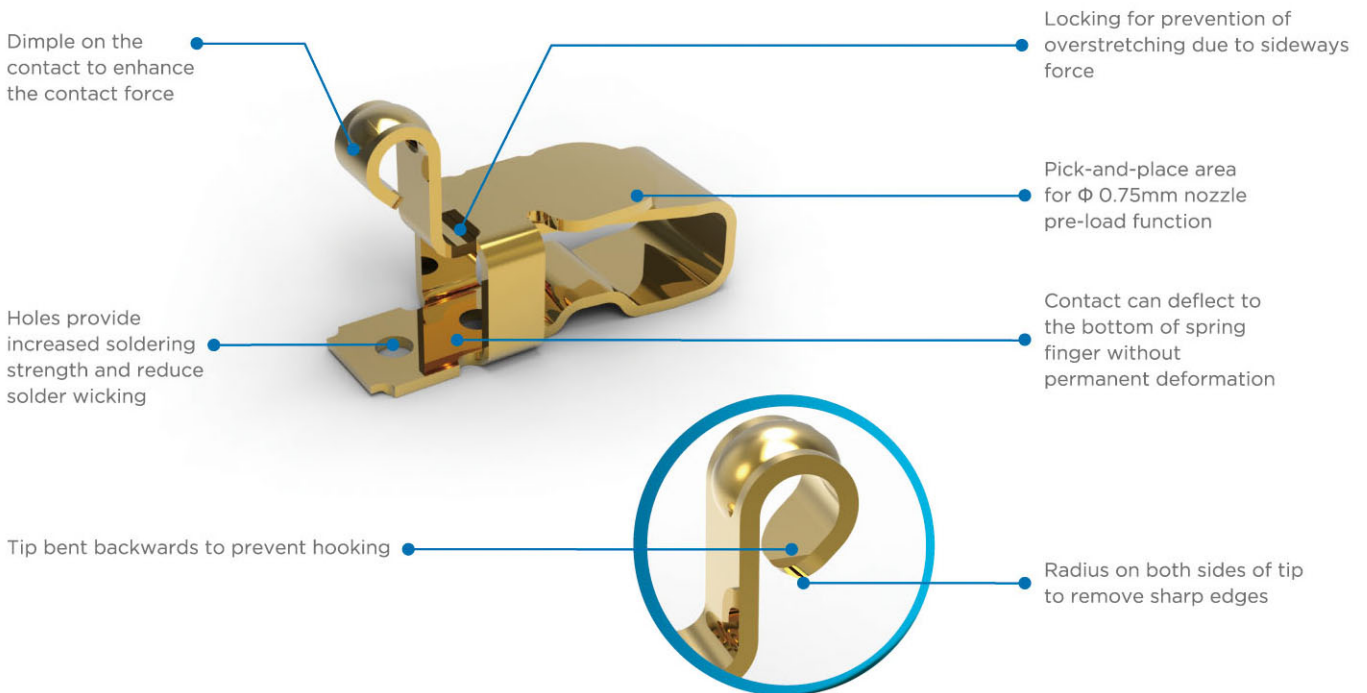
#### Pre-loaded Scalable



The scalable family of spring fingers offers the same benefits as pre-loaded spring fingers, but with a common footprint.

### Scalable Spring Finger Key Features

Spring finger family with a common footprint in scalable heights.







## Frequently asked questions

### Question1

Why would I use a pre-loaded spring finger in an application?

### Answer1

A pre-loaded spring finger allows you to get the same amount of force, but with a smaller compression. A pre-loaded spring finger provides a stable electrical contact with minimal deflection. Sometimes these are preferred when there is limited height available in an application.

### Question2

What style of spring finger is best for my application?

### Answer2

Spring fingers are typically one of the last pieces added to a board. The type to be used is dependent upon the height and space left on the board. The decision of what type of spring finger to use is typically based on personal preference.

### Question3

Can the types of spring fingers be mixed in an application?

### Answer3

Yes, an application can have multiple spring fingers and more than one type. For example, there can be simple C types used for grounding between the device and the PCB and then multiple pre-loaded spring fingers on the board for shielding or other simple connections.

## FOR MORE INFORMATION

### TE Connectivity Technical Support Center

Internet: [te.com/help](http://te.com/help)  
USA: +1 (800) 522-6752  
Canada: +1 (905) 475-6222  
Mexico: +52 (0) 55-1106-0800  
Latin/South America: +54 (0) 11-4733-2200  
Germany: +49 (0) 6251-133-1999  
UK: +44 (0) 800-267666  
France: +33 (0) 1-3420-8686  
Netherlands: +31 (0) 73-6246-999  
China: +86 (0) 400-820-6015  
For other country number go to [te.com/supportcenter](http://te.com/supportcenter)

Part numbers in this brochure are RoHS Compliant\*, unless marked otherwise.

\*as defined [www.te.com/leadfree](http://www.te.com/leadfree)

## te.com

© 2011 Tyco Electronics Corporation, a TE Connectivity Ltd. Company. All Rights Reserved.  
6-1773460-8 CIS PDF 08/2011

Blu-ray™ is a trademark of the Blu-ray Disc. Association.

TE Connectivity, TE connectivity (logo) and TE (logo) are trademarks. Other logos, product and/or Company names might be trademarks of their respective owners.

While TE has made every reasonable effort to ensure the accuracy of the information in this brochure, TE does not guarantee that it is error-free, nor does TE make any other representation, warranty or guarantee that the information is accurate, correct, reliable or current. TE reserves the right to make any adjustments to the information contained herein at any time without notice. TE expressly disclaims all implied warranties regarding the information contained herein, including, but not limited to, any implied warranties of merchantability or fitness for a particular purpose. The dimensions in this catalog are for reference purposes only and are subject to change without notice. Specifications are subject to change without notice. Consult TE for the latest dimensions and design specifications.



## X-ON Electronics

Largest Supplier of Electrical and Electronic Components

*Click to view similar products for [Heavy Duty Power Connectors](#) category:*

*Click to view products by [TE Connectivity](#) manufacturer:*

Other Similar products are found below :

[647757-1](#) [6643411-1](#) [6646058-2](#) [6646137-1](#) [6646138-1](#) [6646479-1](#) [6646608-1](#) [6646786-1](#) [6646940-1](#) [6651091-1](#) [6651525-1](#) [6651529-1](#)  
[6651788-1](#) [696475-1](#) [702-32-01109](#) [703-25-02205](#) [73000005059](#) [73000005642](#) [73080255059](#) [73080965046](#) [765-15-0080A](#) [765-16-0080B](#)  
[765-18-0080D](#) [829992-1](#) [902-77-02113](#) [PS00/A0620/6300](#) [PS25/A0420/63](#) [129-1J](#) [1409400](#) [AN0024023](#) [E6374G1](#) [e6389g2](#) [157-43GW8](#)  
[MS3117-14AC](#) [1643543-1](#) [1650540-1](#) [1651811-2](#) [1766260-1](#) [1766282-1](#) [1766966-1](#) [1791340000](#) [NLDFT-3-BL-L-S120-M40A](#) [NLDFT-N-](#)  
[W-L-C240-M40B](#) [NLS-2-R-C240-M40B](#) [NLS-N-W-C240-M40B](#) [NPS-3-BL-T6](#) [1986615-1](#) [2-1589900-8](#) [2199314-1](#) [KA8102](#)