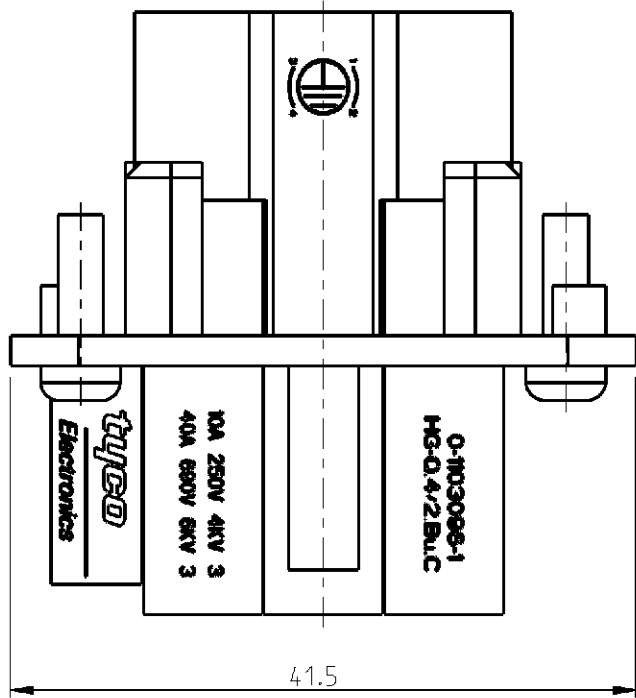
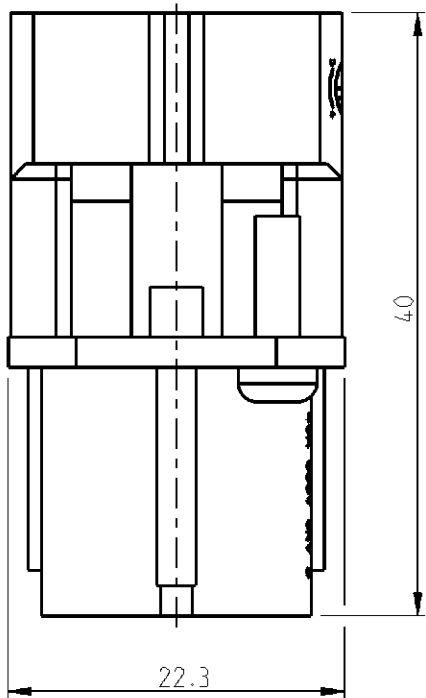


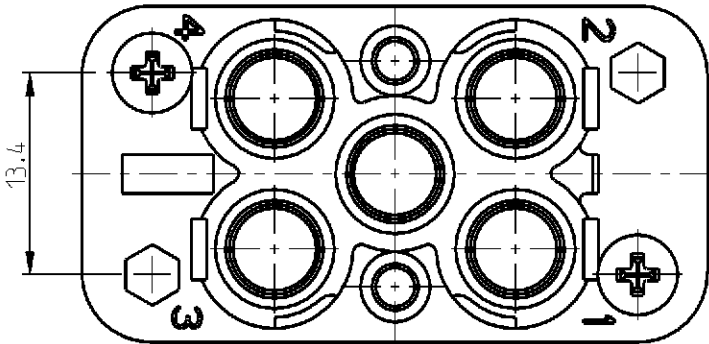
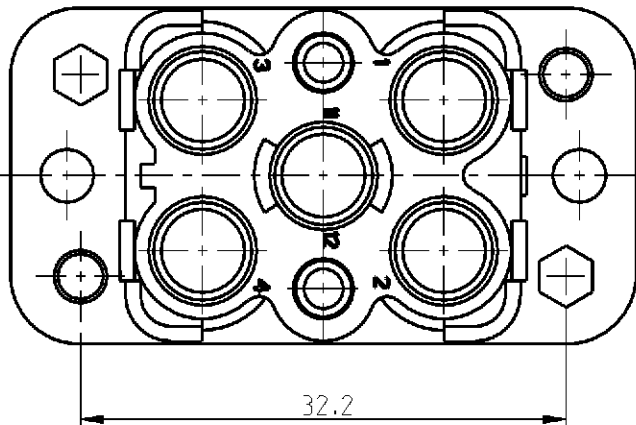
LOC	DIST	REVISIONS					
		P	LTR	DESCRIPTION	DATE	DWN	APVD
A1	-		C1	RELEASED AS PER ECR-07-005630	13-Mar-07	PKP	ST



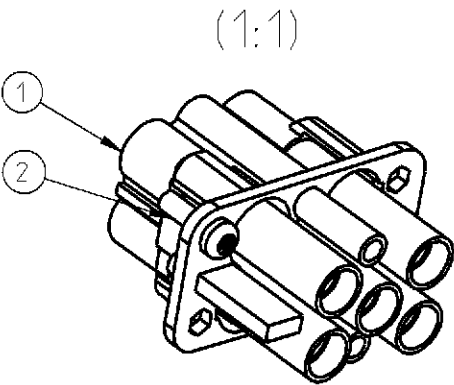
CONTACT ARRANGEMENT
VIEW FROM TERMINATION SIDE



CONTACT ARRANGEMENT
VIEW FROM CONNECTING SIDE



PN 0-1 AS SHOWN
ORDERING TEXT:HE-Q.4/2.BU.C



NOTES

- 1 POWER CONTACT: 1 TO 4
SUITABLE CRIMP CONTACTS: SERIES HSK
CUSTOMER DRAWING NO :1108756
OUTER DIMENSIONS OF INSULATOR:MAX Ø8 MM
- 2 SIGNAL CONTACT: 11 AND 12
SUITABLE CRIMP CONTACTS: SERIES HN.D
CUSTOMER DRAWING NO :1105051
OUTER DIMENSIONS OF INSULATOR:MAX Ø3.8 MM
- 3 GROUNDING CONTACT
SUITABLE CRIMP CONTACTS: SERIES HSK
CUSTOMER DRAWING NO :1108756
OUTER DIMENSIONS OF INSULATOR:MAX Ø8 MM
- 4 SUITABLE HOOD:SERIES HG-Q
- 5 NORM ACCOR: DIN EN 61984;DIN EN 60664-1
- 6 PACKAGING:
10 PIECES IN A BOX

QTY.	DESCRIPTION	MATERIAL	SURFACE	COLOR	NOTE	ITEM
2	SCREW 3X10	STEEL	ZINC PLATED	BLUE	FOR PLASTICS	2
1	FEMALE INSERT	PBT-GF25	-	LIGHT-GREY	-	1

PARTS LIST

THIS DRAWING IS A CONTROLLED DOCUMENT FOR TYCO ELECTRONICS CORPORATION IT IS SUBJECT TO CHANGE AND THE CONTROLLING ENGINEERING ORGANIZATION SHOULD BE CONTACTED FOR THE LATEST REVISION.		DWN M.Schweiger 21.02.2005	tyco Electronics Tyco Electronics AMP GmbH D-53819 Neunkirchen, Germany			
		CHK T.Schnurpfel 20.02.2005				
DIMENSIONS: mm		APVD	NAME FEMALE INSERT HG-Q.4/2.BU.C			
TOLERANCES UNLESS OTHERWISE SPECIFIED: n/ISO 6075 n/ISO 2768-MK-E n/DIN 16901-120		PRODUCT SPEC 108-74053	SIZE A3			
0 PLC ± 1 PLC ± 2 PLC ± 3 PLC ± 4 PLC ± ANGLES ±		APPLICATION SPEC 114-74055	CAGE CODE 00779			
MATERIAL		WEIGHT 0.012KG	DRAWING NO C-1103096			
FINISH		CUSTOMER DRAWING	RESTRICTED TO			
		SCALE 2:1	SHEET 1 OF 1			
			REV C1			

X-ON Electronics

Largest Supplier of Electrical and Electronic Components

Click to view similar products for [Heavy Duty Power Connectors](#) *category:*

Click to view products by [TE Connectivity](#) *manufacturer:*

Other Similar products are found below :

[1424439](#) [1424438](#) [09330062652](#) [605601-1](#) [6340G1](#) [6341G1](#) [6360G1](#) [6373G1](#) [6374g2](#) [6396G1](#) [647757-1](#) [6643411-1](#) [6646058-2](#) [6646137-1](#)
[6646138-1](#) [6646348-1](#) [6646479-1](#) [6646608-1](#) [6646786-1](#) [6646940-1](#) [6651525-1](#) [6651529-1](#) [6651778-1](#) [6651788-1](#) [696465-1](#) [696475-1](#)
[73000005059](#) [73000005349](#) [73000005642](#) [73080965046](#) [765-15-0080A](#) [765-16-0080B](#) [789.700-44](#) [789.700-54](#) [80-1010](#) [80-9](#) [827381-1](#)
[829992-1](#) [902-77-02113](#) [PL00U-301-10D10](#) [PM103MOOLOO](#) [PM212MOOLOO](#) [PM309FOOLOO](#) [PM324FOOLCH](#) [PMHPAF11S03](#)
[PMHPAF14S01](#) [PMHPAM14P05](#) [PMHPAS06](#) [PMHPBF14S01](#) [PP45PC12S](#)