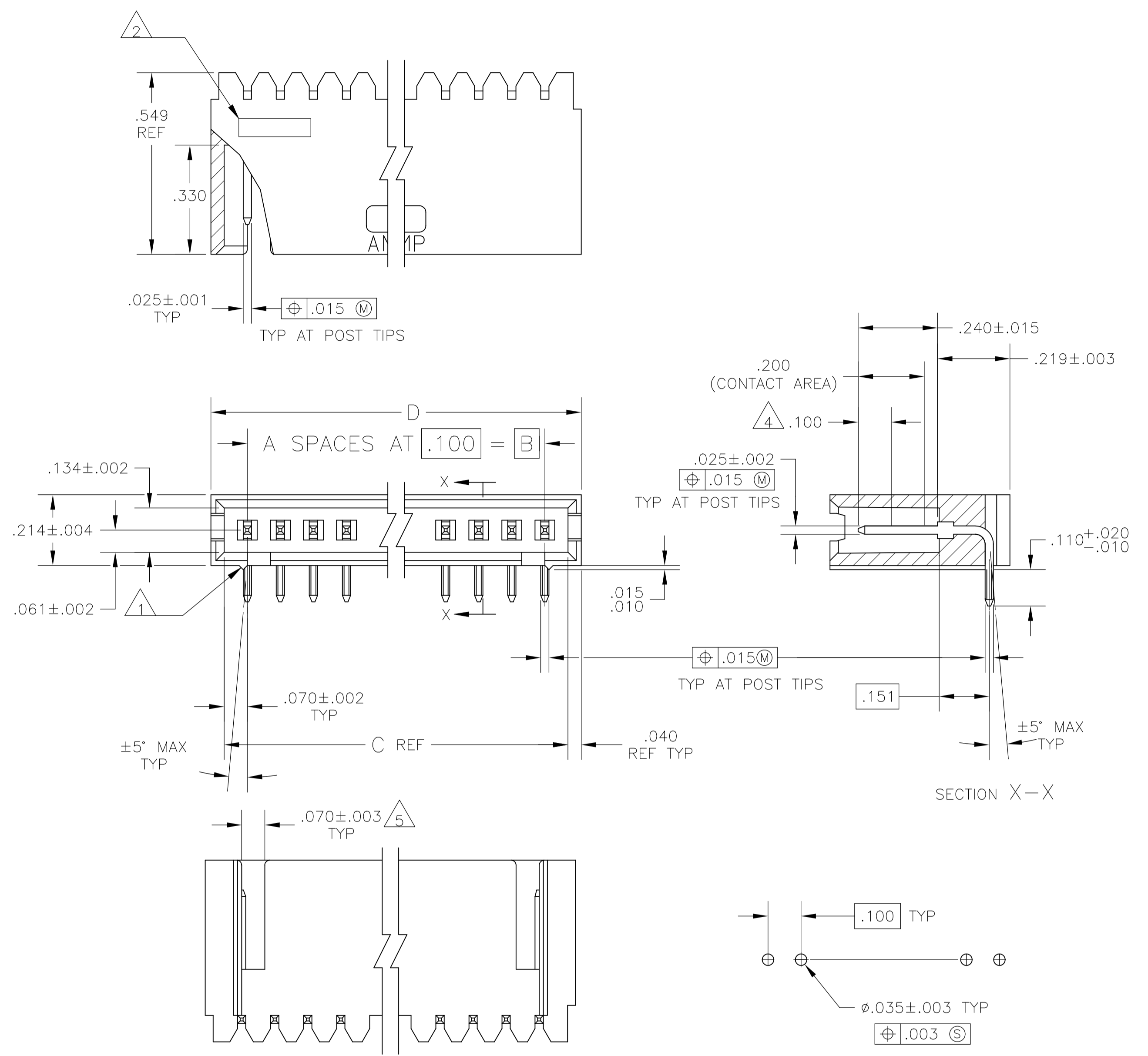


| REVISIONS | | | | |
|-----------|-----|--|-----------|-------|
| P | LTR | DESCRIPTION | DATE | APP'D |
| N3 | | PART STATUS UPDATED IN PART LIST TABLE | 16FEB2018 | SD PS |



RECOMMENDED HOLE LAYOUT

- 1 STANDOFFS:
3 TRHU 9 POSN - (2 REQD) ON OUTSIDE ENDS OF HOUSING
10 THRU 18 POSN - (3 REQD) TWO ON OUTSIDE ENDS AND ONE CENTERED ON HOUSING
19 POSN AND LARGER - (4 REQD) TWO ON OUTSIDE ENDS AND TWO EVENLY SPACED WITHIN REMAINING LENGTH OF HOUSING
- 2 RECESSED DATE CODE
- 3 .000030 GOLD IN CONTACT AREA, .000100-.000200 MATTE TIN-LEAD IN SOLDER AREA, ALL OVER .000050 MIN NICKEL
- 4 POINT OF MEASUREMENT FOR GOLD PLATING THICKNESS
- 5 FOR 3 POS ONLY, ONE SLOT .215 WIDE.
- 6 .000030 GOLD IN CONTACT AREA, .000100-.000200 MATTE TIN IN SOLDER AREA, ALL OVER .000050 MIN NICKEL
- 7 OBSOLETE PARTS: OBSOLETE CIS STREAMLINING PER D.RENAUD/D.SINISI

| | | | | | | | |
|------------|---|-------|-------|-------|----|----|-------------|
| △ OBSOLETE | △ | 2.620 | 2.540 | 2.400 | 24 | 25 | -7-103361-3 |
| △ | △ | 2.520 | 2.440 | 2.300 | 23 | 24 | 7-103361-2 |
| △ OBSOLETE | △ | 2.420 | 2.340 | 2.200 | 22 | 23 | -7-103361-1 |
| △ | △ | 2.320 | 2.240 | 2.100 | 21 | 22 | -7-103361-0 |
| △ | △ | 2.220 | 2.140 | 2.000 | 20 | 21 | -6-103361-9 |
| △ | △ | 2.120 | 2.040 | 1.900 | 19 | 20 | 6-103361-8 |
| △ OBSOLETE | △ | 2.020 | 1.940 | 1.800 | 18 | 19 | -6-103361-7 |
| △ | △ | 1.920 | 1.840 | 1.700 | 17 | 18 | -6-103361-6 |
| △ | △ | 1.820 | 1.740 | 1.600 | 16 | 17 | -6-103361-5 |
| △ | △ | 1.720 | 1.640 | 1.500 | 15 | 16 | 6-103361-4 |
| △ OBSOLETE | △ | 1.620 | 1.540 | 1.400 | 14 | 15 | -6-103361-3 |
| △ | △ | 1.520 | 1.440 | 1.300 | 13 | 14 | 6-103361-2 |
| △ OBSOLETE | △ | 1.420 | 1.340 | 1.200 | 12 | 13 | -6-103361-1 |
| △ | △ | 1.320 | 1.240 | 1.100 | 11 | 12 | 6-103361-0 |
| △ OBSOLETE | △ | 1.220 | 1.140 | 1.000 | 10 | 11 | -5-103361-9 |
| △ | △ | 1.120 | 1.040 | .900 | 9 | 10 | 5-103361-8 |
| △ | △ | 1.020 | .940 | .800 | 8 | 9 | 5-103361-7 |
| △ | △ | .920 | .840 | .700 | 7 | 8 | 5-103361-6 |
| △ | △ | .820 | .740 | .600 | 6 | 7 | 5-103361-5 |
| △ | △ | .720 | .640 | .500 | 5 | 6 | 5-103361-4 |
| △ | △ | .620 | .540 | .400 | 4 | 5 | 5-103361-3 |
| △ | △ | .520 | .440 | .300 | 3 | 4 | 5-103361-2 |
| △ | △ | .420 | .340 | .200 | 2 | 3 | 5-103361-1 |
| △ OBSOLETE | △ | 3.720 | 3.640 | 3.500 | 35 | 36 | 3-103361-4 |
| △ | △ | 3.620 | 3.540 | 3.400 | 34 | 35 | 3-103361-3 |
| △ | △ | 3.520 | 3.440 | 3.300 | 33 | 34 | 3-103361-2 |
| △ | △ | 3.420 | 3.340 | 3.200 | 32 | 33 | 3-103361-1 |
| △ | △ | 3.320 | 3.240 | 3.100 | 31 | 32 | 3-103361-0 |
| △ OBSOLETE | △ | 3.220 | 3.140 | 3.000 | 30 | 31 | 2-103361-9 |
| △ | △ | 3.120 | 3.040 | 2.900 | 29 | 30 | 2-103361-8 |
| △ | △ | 3.020 | 2.940 | 2.800 | 28 | 29 | 2-103361-7 |
| △ | △ | 2.920 | 2.840 | 2.700 | 27 | 28 | 2-103361-6 |
| △ | △ | 2.820 | 2.740 | 2.600 | 26 | 27 | 2-103361-5 |
| △ | △ | 2.720 | 2.640 | 2.500 | 25 | 26 | 2-103361-4 |
| △ | △ | 2.620 | 2.540 | 2.400 | 24 | 25 | 2-103361-3 |
| △ | △ | 2.520 | 2.440 | 2.300 | 23 | 24 | 2-103361-2 |
| △ OBSOLETE | △ | 2.420 | 2.340 | 2.200 | 22 | 23 | -2-103361-1 |
| △ | △ | 2.320 | 2.240 | 2.100 | 21 | 22 | -2-103361-0 |
| △ | △ | 2.220 | 2.140 | 2.000 | 20 | 21 | 1-103361-9 |
| △ | △ | 2.120 | 2.040 | 1.900 | 19 | 20 | 1-103361-8 |
| △ OBSOLETE | △ | 2.020 | 1.940 | 1.800 | 18 | 19 | 1-103361-7 |
| △ | △ | 1.920 | 1.840 | 1.700 | 17 | 18 | 1-103361-6 |
| △ | △ | 1.820 | 1.740 | 1.600 | 16 | 17 | 1-103361-5 |
| △ | △ | 1.720 | 1.640 | 1.500 | 15 | 16 | 1-103361-4 |
| △ OBSOLETE | △ | 1.620 | 1.540 | 1.400 | 14 | 15 | 1-103361-3 |
| △ | △ | 1.520 | 1.440 | 1.300 | 13 | 14 | 1-103361-2 |
| △ | △ | 1.420 | 1.340 | 1.200 | 12 | 13 | 1-103361-1 |
| △ | △ | 1.320 | 1.240 | 1.100 | 11 | 12 | 1-103361-0 |
| △ OBSOLETE | △ | 1.220 | 1.140 | 1.000 | 10 | 11 | 103361-9 |
| △ | △ | 1.120 | 1.040 | .900 | 9 | 10 | 103361-8 |
| △ | △ | 1.020 | .940 | .800 | 8 | 9 | 103361-7 |
| △ | △ | .920 | .840 | .700 | 7 | 8 | 103361-6 |
| △ | △ | .820 | .740 | .600 | 6 | 7 | 103361-5 |
| △ | △ | .720 | .640 | .500 | 5 | 6 | 103361-4 |
| △ | △ | .620 | .540 | .400 | 4 | 5 | 103361-3 |
| △ | △ | .520 | .440 | .300 | 3 | 4 | 103361-2 |
| △ | △ | .420 | .340 | .200 | 2 | 3 | 103361-1 |

| PLATING | D | C | B | A | NO. OF POSN. | PART NO. |
|---------|---|---|---|---|--------------|----------|
| | | | | | | |

THIS DRAWING IS A CONTROLLED DOCUMENT. DWN S.A. SHUEY 28SEP89
 DIMENSIONS: INCHES 0 PLC ± .005, 1 PLC ± .005, 2 PLC ± .005, 3 PLC ± .005, 4 PLC ± .005, ANGLES ± .005
 TOLERANCES UNLESS OTHERWISE SPECIFIED: SEE TABLE
 MATERIAL HOUSING: FLAME RETARDANT THERMOPLASTIC, COLOR: BLACK, POSTS: PHOS BRONZE
 FINISH: SEE TABLE
 WEIGHT: -
 CUSTOMER DRAWING
 DWG: H. MOLL 30CT89
 APVD: R. FLICKER 30CT89
 PRODUCT SPEC: -
 APPLICATION SPEC: -
 NAME: -
 SIZE: A1, CAGE CODE: 00779, DRAWING NO: 103361
 RESTRICTED TO: -
 SCALE: 4:1, SHEET: 1 OF 1, REV: N3

STE TE Connectivity
 HEADER ASSEMBLY, MOD II, SINGLE ROW .100 CL, RIGHT ANGLE

X-ON Electronics

Largest Supplier of Electrical and Electronic Components

Click to view similar products for [Headers & Wire Housings](#) category:

Click to view products by [TE Connectivity](#) manufacturer:

Other Similar products are found below :

[95000-104TRLF](#) [10135584-644402LF](#) [DF62W-EP2022PCA](#) [95000-106TRLF](#) [DF62W-2022SCA](#) [DF62W-EP2022PC](#) [2203348](#) [DF62W-2022SC](#) [1084018](#) [1029039](#) [1084017](#) [802-10-012-10-002000](#) [1112640](#) [1112639](#) [000-34000](#) [0009482033](#) [0009507031](#) [57102-S06-03LF](#) [57202-S52-04LF](#) [PCN6-15S-2.5E](#) [0039019024](#) [58102-G61-06LF](#) [582553-1](#) [0009508121](#) [0050291907](#) [018731A](#) [LY20-4P-DT1-P1E-BR](#) [02.125.8002.8](#) [60101931](#) [60598-1 \(Cut Strip\)](#) [M1625-3R/100](#) [61062-3](#) [61082-181009](#) [636-1427](#) [638009-1](#) [641938-9](#) [641991-4](#) [644168-1](#) [647662-1](#) [65039-019ELF](#) [65817-002LF](#) [65817-015LF](#) [65863-015LF](#) [66207-023LF](#) [67016-026LF](#) [67046-001LF](#) [67095-007LF](#) [68002-116](#) [68016-236H](#) [68648-049](#)