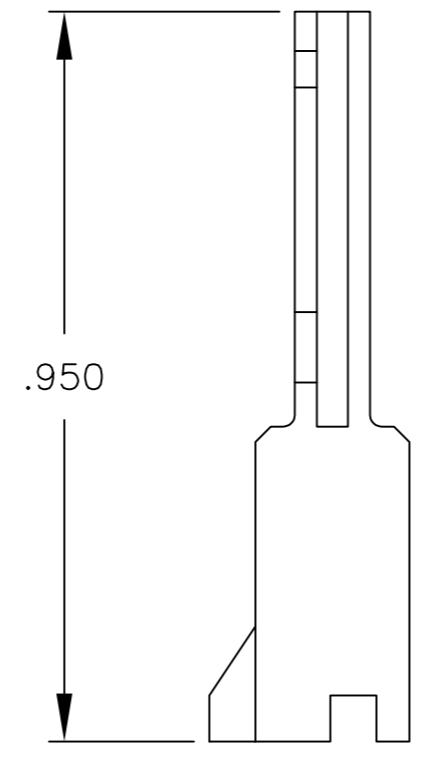
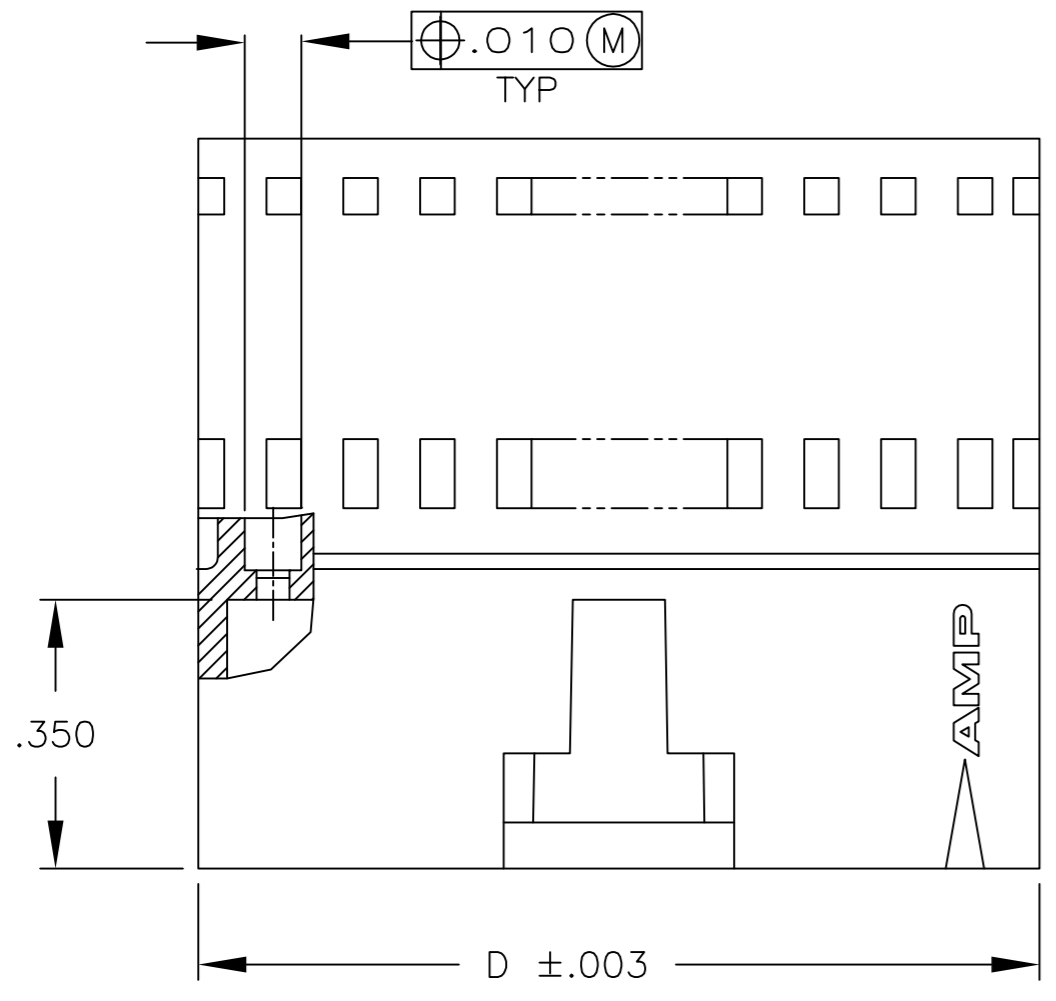
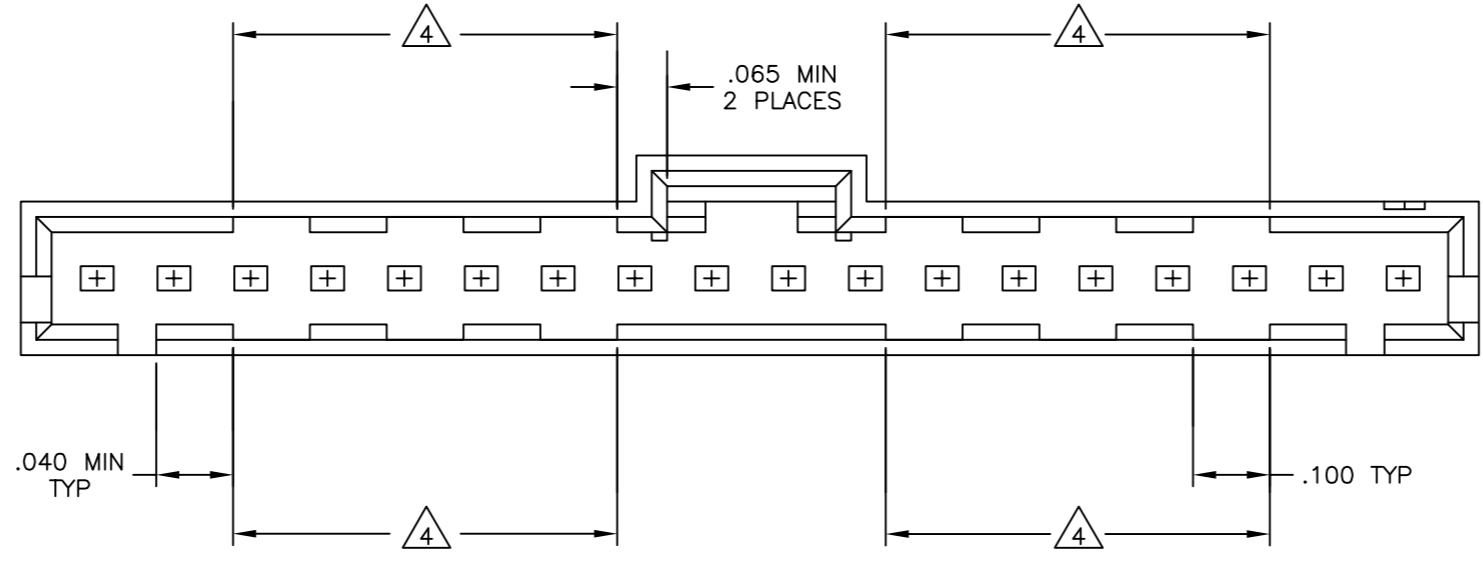
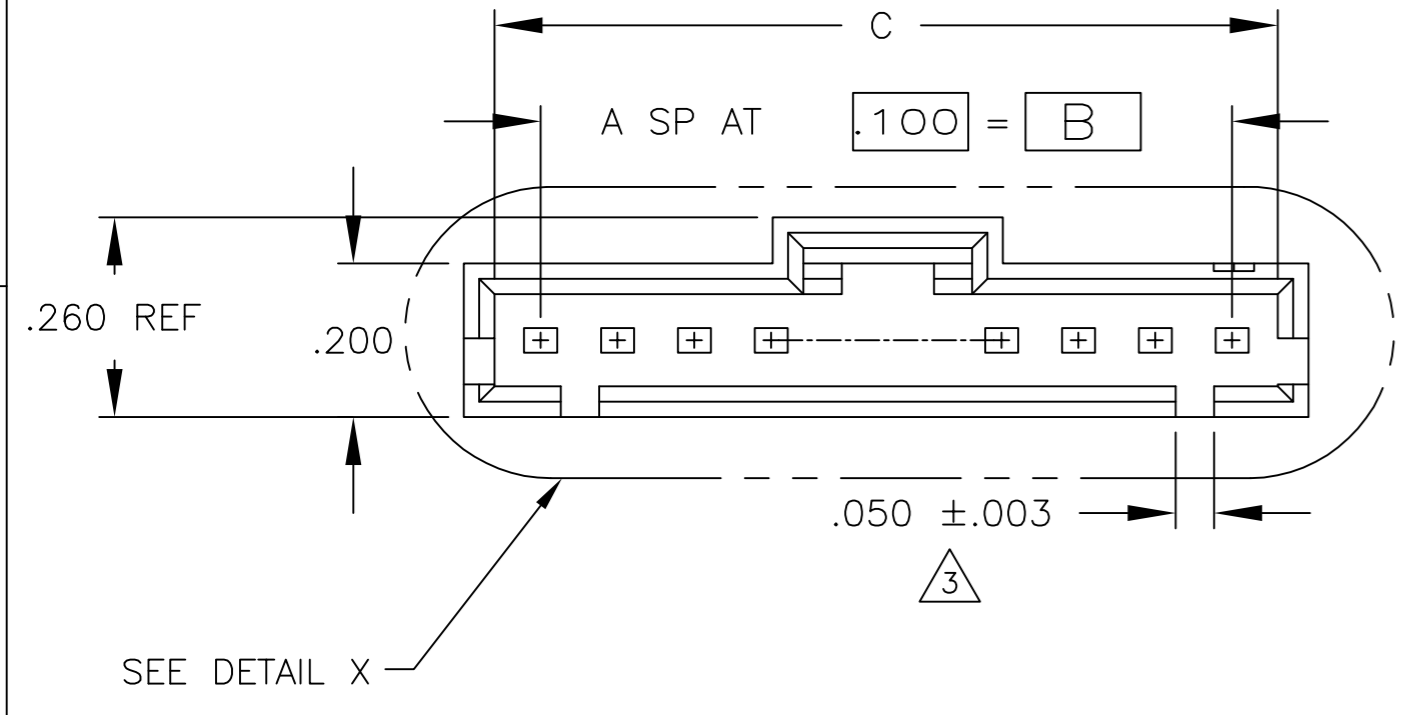


THIS DRAWING IS UNPUBLISHED. RELEASED FOR PUBLICATION
 © COPYRIGHT - By - ALL RIGHTS RESERVED.

REVISIONS					
P	LTR	DESCRIPTION	DATE	DWN	APVD
P2		REVISED PER ECO-11-010839	25MAY11	RK	HMR
R		REVISED PER ECO-17-007805	31MAY2017	RS	MM

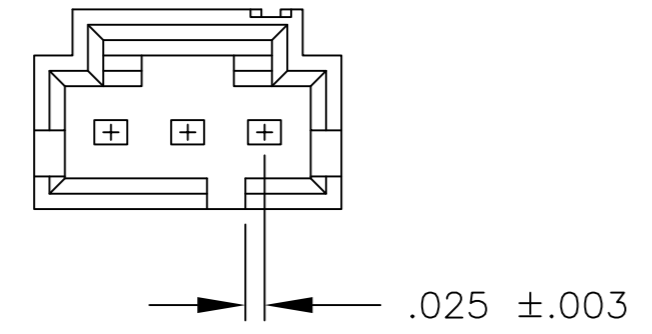
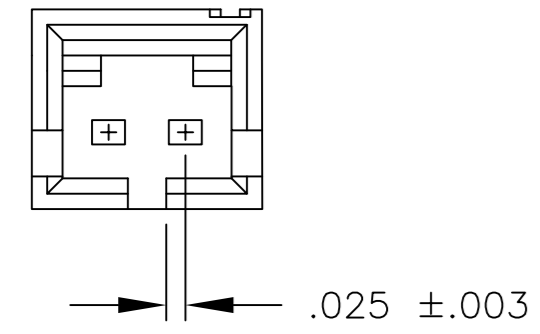


- 1 PBT.
- 2 LCP.
- 3 TOLERANCE IS $+.007/-0.003$ FOR 6 POSITION AND SMALLER SIZES.
- 4 VOID CORING IN THIS AREA OPTIONAL FOR MOLDING IMPROVEMENT.



DETAIL X
 SCALE 6:1
 (18 POSN SHOWN FOR CLARITY)

	D	C	B	A	NO OF POSN	PART NUMBER
2	2.595	2.520	2.400	24	25	2-103653-4
2	2.495	2.420	2.300	23	24	2-103653-3
2	2.395	2.320	2.200	22	23	2-103653-2
2	2.295	2.220	2.100	21	22	2-103653-1
2	2.195	2.120	2.000	20	21	2-103653-0
2	2.095	2.020	1.900	19	20	1-103653-9
2	1.995	1.920	1.800	18	19	1-103653-8
2	1.895	1.820	1.700	17	18	1-103653-7
2	1.795	1.720	1.600	16	17	1-103653-6
2	1.695	1.620	1.500	15	16	1-103653-5
2	1.595	1.520	1.400	14	15	1-103653-4
2	1.495	1.420	1.300	13	14	1-103653-3
2	1.395	1.320	1.200	12	13	1-103653-2
2	1.295	1.220	1.100	11	12	1-103653-1
2	1.195	1.120	1.000	10	11	1-103653-0
2	1.095	1.020	.900	9	10	103653-9
2	.995	.920	.800	8	9	103653-8
2	.895	.820	.700	7	8	103653-7
2	.795	.720	.600	6	7	103653-6
1	.695	.620	.500	5	6	103653-5
1	.595	.520	.400	4	5	103653-4
1	.495	.420	.300	3	4	103653-3
1	.395	.320	.200	2	3	103653-2
1	.295	.220	.100	1	2	103653-1



THIS DRAWING IS A CONTROLLED DOCUMENT.

DWN R BROWN 28JUL00	 TE Connectivity PIN HOUSING, AMPMODU MTE, SINGLE ROW, .100 CL POLARIZED WITH LATCH
CHK K WRIGHT 28JUL00	
APVD K WRIGHT 28JUL00	
PRODUCT SPEC 108-25034	
MATERIAL SEE TABLE	APPLICATION SPEC 114-25026 WEIGHT - CUSTOMER DRAWING
DIMENSIONS: INCHES TOLERANCES UNLESS OTHERWISE SPECIFIED: 0 PLC ± - 1 PLC ± - 2 PLC ± - 3 PLC ± .005 4 PLC ± - ANGLES ± - FINISH -	
SIZE A2 CAGE CODE 00779 DRAWING NO C=103653 RESTRICTED TO - SCALE 4:1 SHEET 1 of 1 REV R	

X-ON Electronics

Largest Supplier of Electrical and Electronic Components

Click to view similar products for [Headers & Wire Housings](#) category:

Click to view products by [TE Connectivity](#) manufacturer:

Other Similar products are found below :

[892-18-020-10-001101](#) [58102-G61-06LF](#) [582553-1](#) [0009485154](#) [009176003701906](#) [0050291907](#) [LY20-4P-DT1-P1E-BR](#) [02.125.8002.8](#)
[609-3404](#) [61062-3](#) [61082-181009](#) [622-3653LF](#) [63453-116](#) [636-1030](#) [636-1427](#) [636-3427](#) [636-4007](#) [641938-9](#) [641991-4](#) [644827-2](#) [65817-010LF](#) [65817-015LF](#) [65863-015LF](#) [66207-023LF](#) [67095-007LF](#) [67601157](#) [68645-018](#) [68648-049](#) [70.362.1628.0](#) [70-4210](#) [70-4226B](#) [70-4853B](#) [707-5020](#) [707-5028](#) [71.350.2428.0](#) [71918-208LF](#) [71961-016LF](#) [733-134](#) [733-162](#) [754199-000](#) [760-3052](#) [787-8014-00](#) [79531-3000](#)
[FCN-360C032-B](#) [FCN-367T-T012/H](#) [FCN-723D010/2](#) [80.063.4001.1](#) [800-90-001-10-001000](#) [800-90-010-10-002000](#) [801-43-002-10-013000](#)