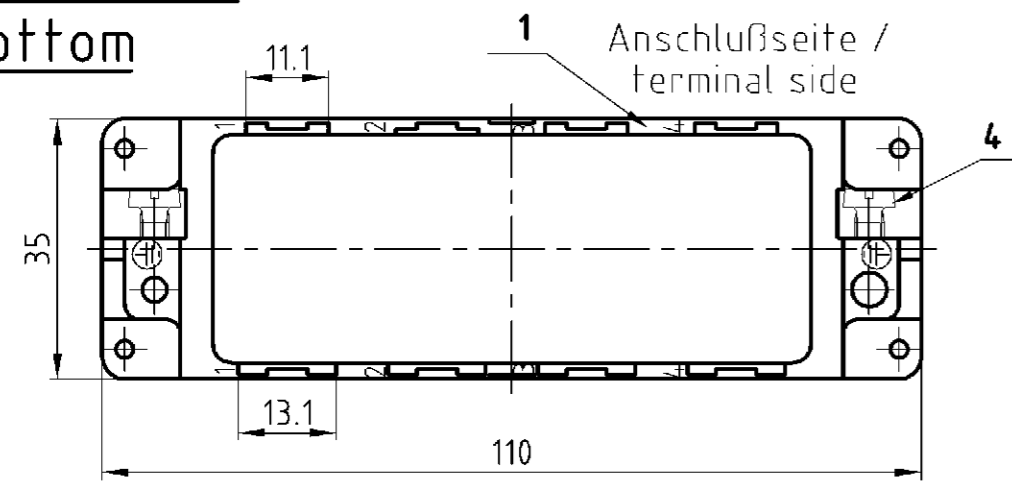
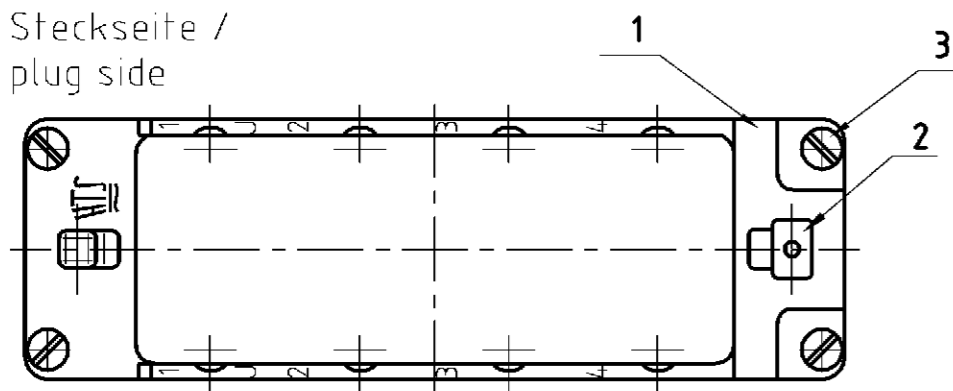


LOC	DIST	REVISIONS				DATE	DWN	APVD
AI	-	P	LTR	ÄNDERUNGEN		01.07.06	GW	ST
PROJEKT NR.:		B2		ECR-05-006046		DESCRIPTION		
B 91 04 65						BESCHREIBUNG		

Unterteil /
bottom

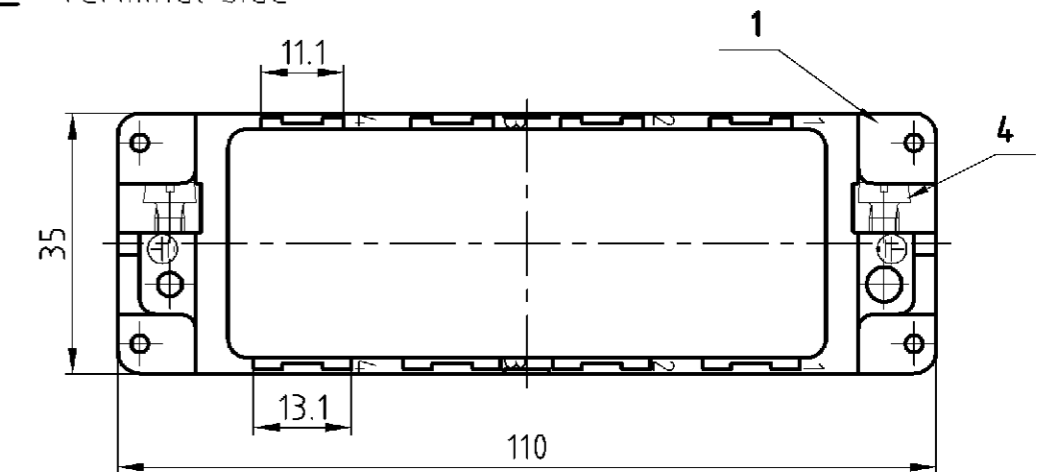


Steckseite /
plug side

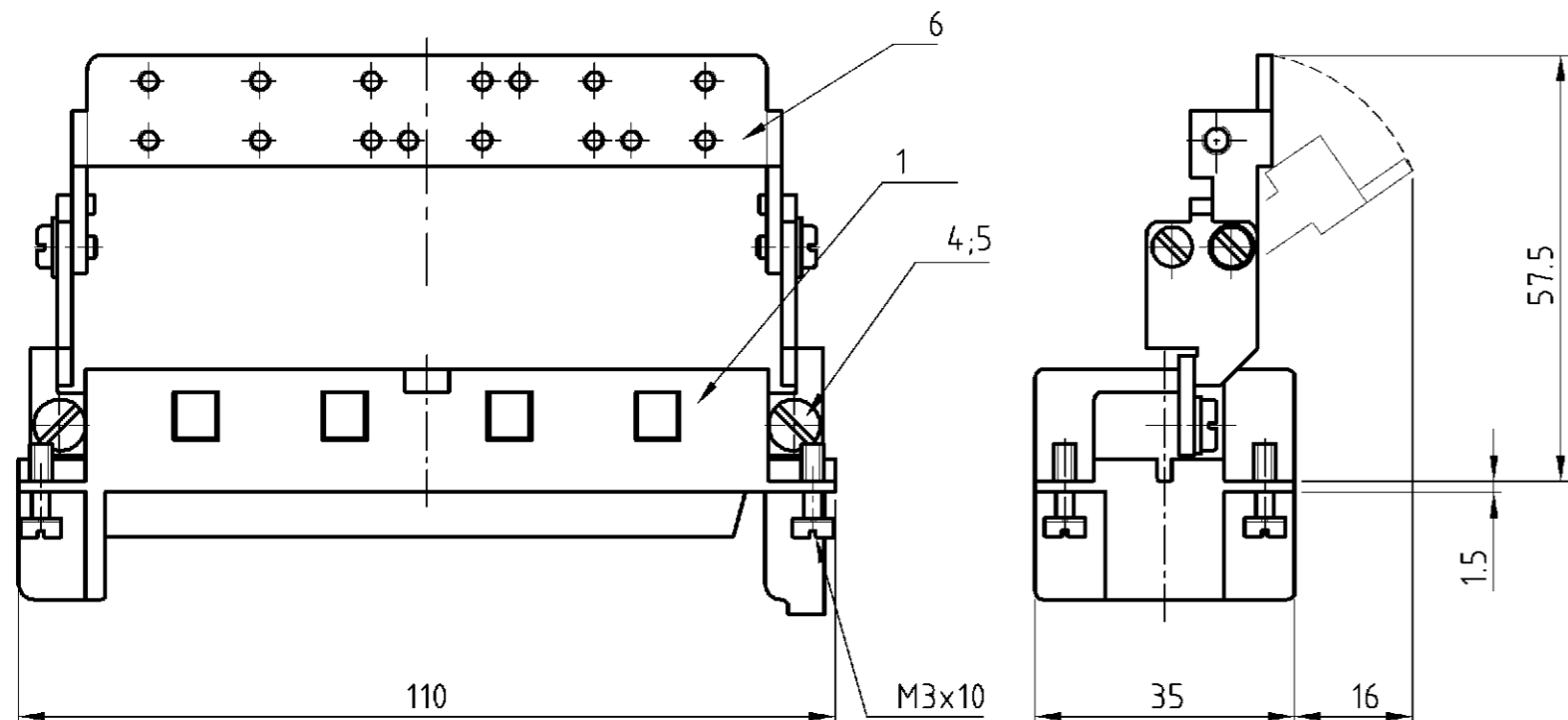
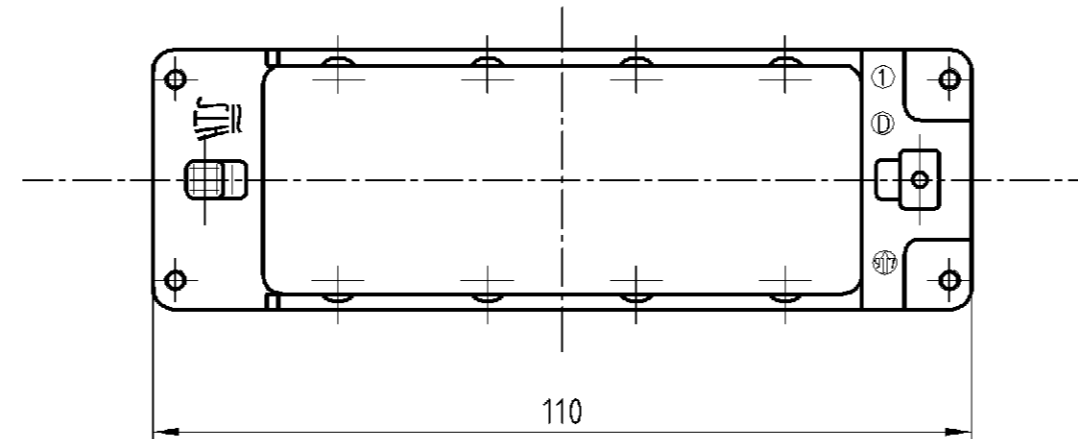
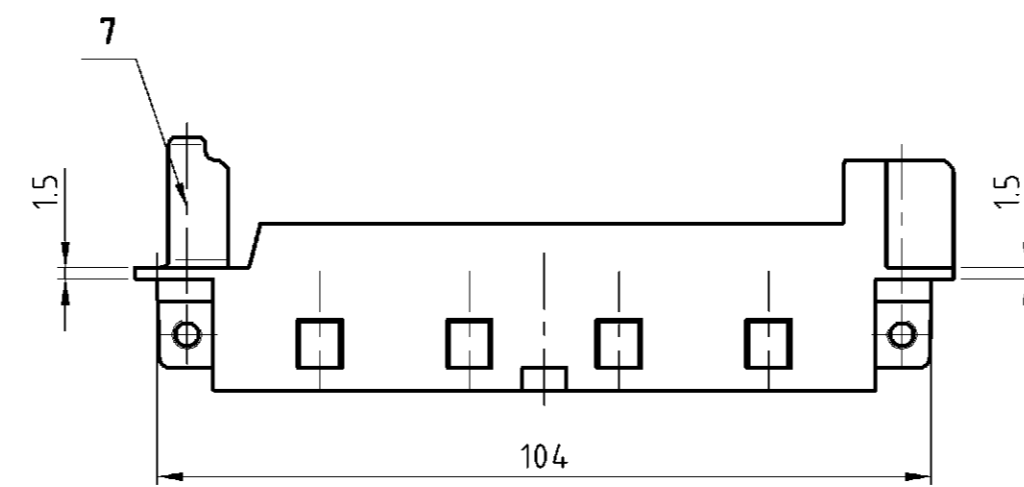
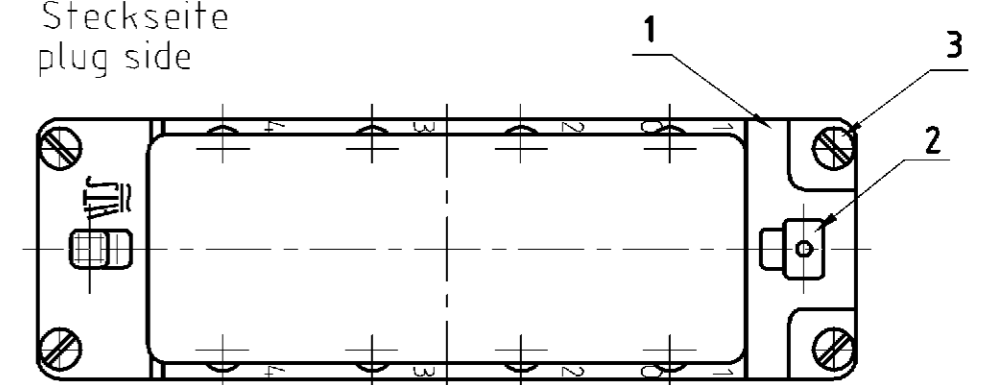


Oberteil /
upper part

Anschlußseite
terminal side



Steckseite
plug side



						1	2			
		1				Modulrahmen Oberteil module frame upper part	Zink-Leg./ zinc alloy	Verzinkt/ tin plated	7	Sonder für Griffblech/ special for grip
		1	1			Schirmbügel schwenkbar/ screen termination roofing	Stahl/steel	Verzinkt/ tin plated	6	
		2	2			Federring/ spring lock washer	Stahl/steel	Verzinkt/ tin plated	5	DIN 128 - A4
2	2	2	2	2	2	Zylinderschraube mit Schlitz/ cylinder screw with slit	Messing/brass	Vernickelt/ nickel plated	4	DIN EN ISO 1207
4	4	4	4	4	4	Befestigungsschraube/ fixing screw	Stahl/steel	Vernickelt/ nickel plated	3	M3x10
1	1	1	1	1	1	Erdkontaktfeder/ spring f. grounding cont.	Bronze/ bronze	Vernickelt/ nickel plated	2	
1	1		1	1	1	Modulrahmen/ module frame	Zink-Leg./ zinc alloy	Verzinkt/ tin plated	1	
0-70-60-50-40-30-20-1						DESCRIPTION / BENENNUNG	MATERIAL	SURFACE/COLOR	ITEM NO. Pos.	NOTES / BEMERKUNGEN
MDL2-GR-U-8-B5-8	MDL2-GR-O-8-B5-8	MDL2-GR-O-8/GB-B1-4	MDL2-GR-U-8/SB-B1-4	MDL2-GR-O-8/SB-B1-4	MDL2-GR-U-8-B1-4	MDL2-GR-O-8-B1-4	ORDERING TEXT/BESTELTEXT	DWN wroblewski 06.10.2003	APVD Baum 06.10.2003	NAME AMP HTS Elektrotechnik 53819 Neunkirchen, Germany
DIMENSIONS: DIMENSIONEN: mm							TOLERANCES UNLESS OTHERWISE SPECIFIED ALLGEMEIN TOLERANZEN		PRODUCT SPEC PRODUKTSPEZ	
MATERIAL							FINISH / OBERFLÄCHE / FARBE		APPLICATION SPEC VERARBEITUNGSSPEZ	
0 PLC							0 PL		WEIGHT GEWICHT	
1 PLC							1 PL		CUSTOMER DRAWING	
2 PLC							2 PL		SIZE	
3 PLC							3 PL		CAGE CODE	
ANGLES / WINKEL							FINISH / OBERFLÄCHE / FARBE		DRAWING NO. ZEICHNUNGS-NR.	
1							2		1108780	
							RESTRICTED TO NUR FÜR		REV	
							CUSTOMER DRAWING		/KUNDENZEICHNUNG	
							MASSSTAB		BLATT	
							1:1		OF	
							1		VON	
							1		REV	
							B2			

X-ON Electronics

Largest Supplier of Electrical and Electronic Components

Click to view similar products for [Heavy Duty Power Connectors](#) category:

Click to view products by [TE Connectivity](#) manufacturer:

Other Similar products are found below :

[1424439](#) [1424438](#) [09330062652](#) [2-8675P1](#) [580129-2](#) [605601-1](#) [6340G1](#) [6341G1](#) [6360G1](#) [6373G1](#) [6374g2](#) [6396G1](#) [647757-1](#) [66394-4](#)
[6643411-1](#) [6646058-2](#) [6646137-1](#) [6646138-1](#) [6646348-1](#) [6646479-1](#) [6646608-1](#) [6646786-1](#) [6646940-1](#) [6651091-1](#) [6651525-1](#) [6651529-1](#)
[6651778-1](#) [6651788-1](#) [696465-1](#) [696475-1](#) [73000005059](#) [73000005349](#) [73000005642](#) [73080255059](#) [73080965046](#) [765-15-0080A](#)
[765-16-0080B](#) [789.700-44](#) [789.700-54](#) [80-1010](#) [80-9](#) [827381-1](#) [829992-1](#) [902-77-02113](#) [PL00U-301-10D10](#) [PM103MOOLOO](#)
[PM16S1620S32-50](#) [PM212MOOLOO](#) [PM309FOOLOO](#) [PM324FOOLCH](#)