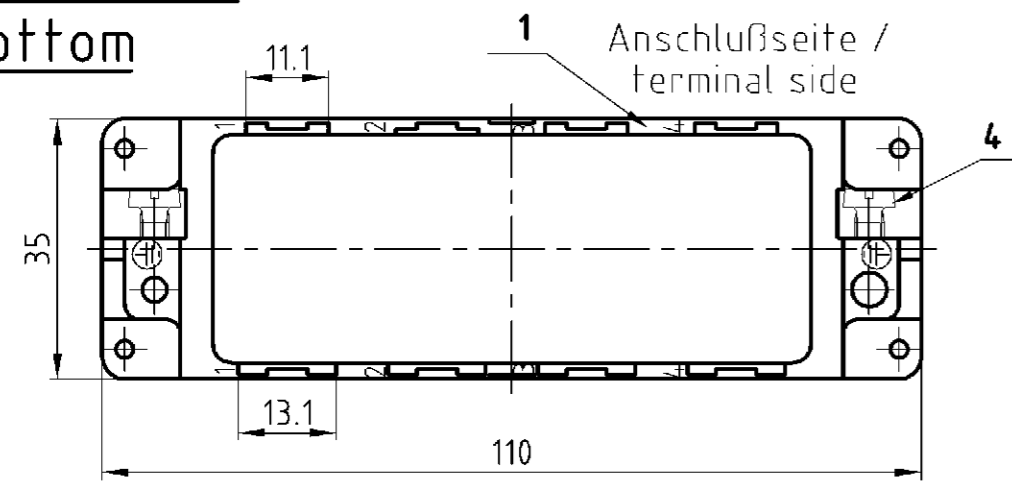
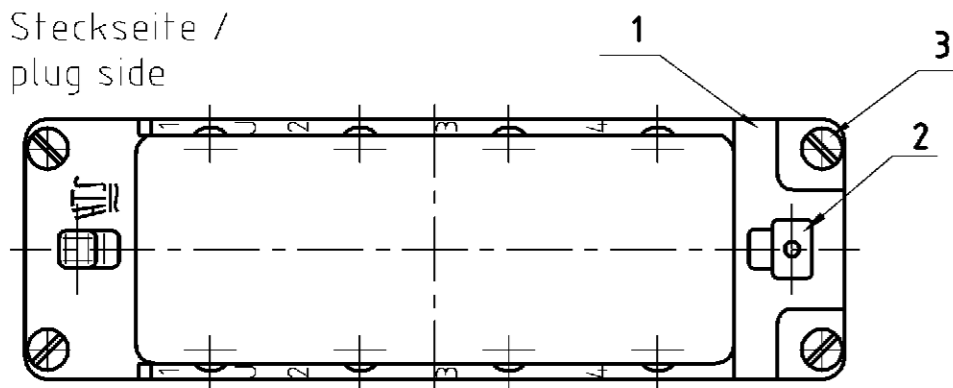


LOC	DIST	REVISIONS				DATE	DWN	APVD
P	LTR	ÄNDERUNGEN		DESCRIPTION				
PROJEKT NR.:		BESCHREIBUNG						
AI	-					01.07.06	GW	ST
B 91 04 65		ECR-05-006046						

**Unterteil /
bottom**

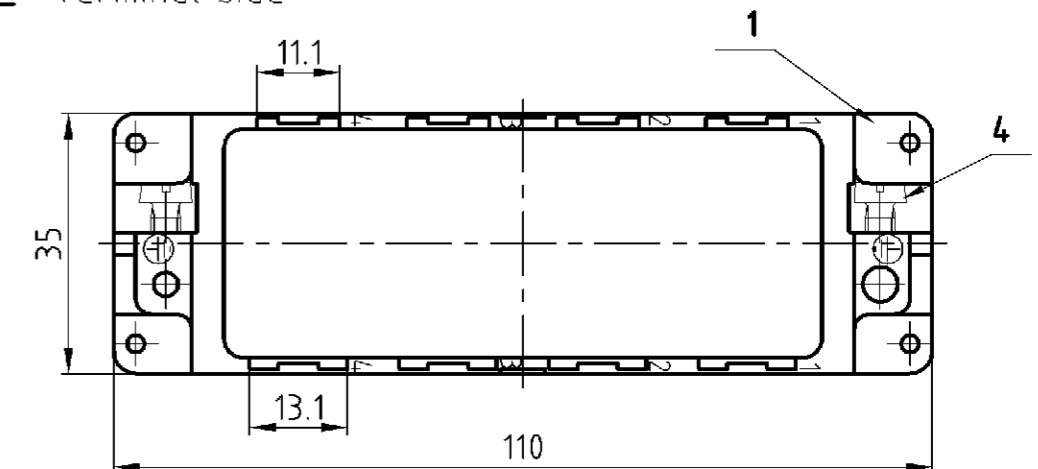


**Steckseite /
plug side**

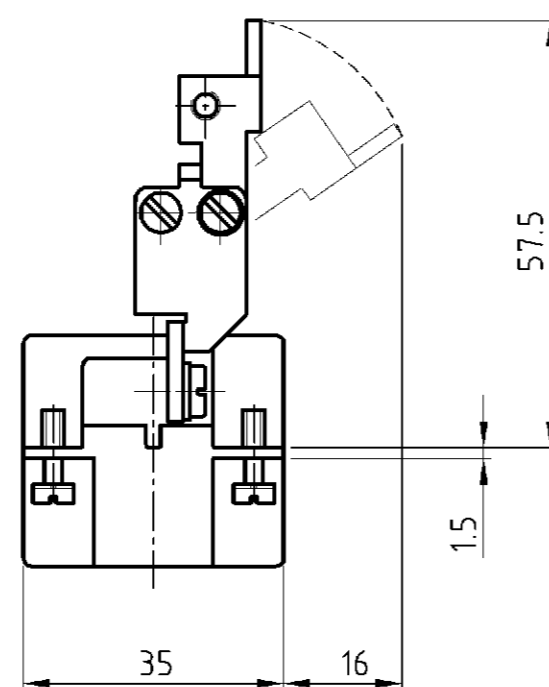
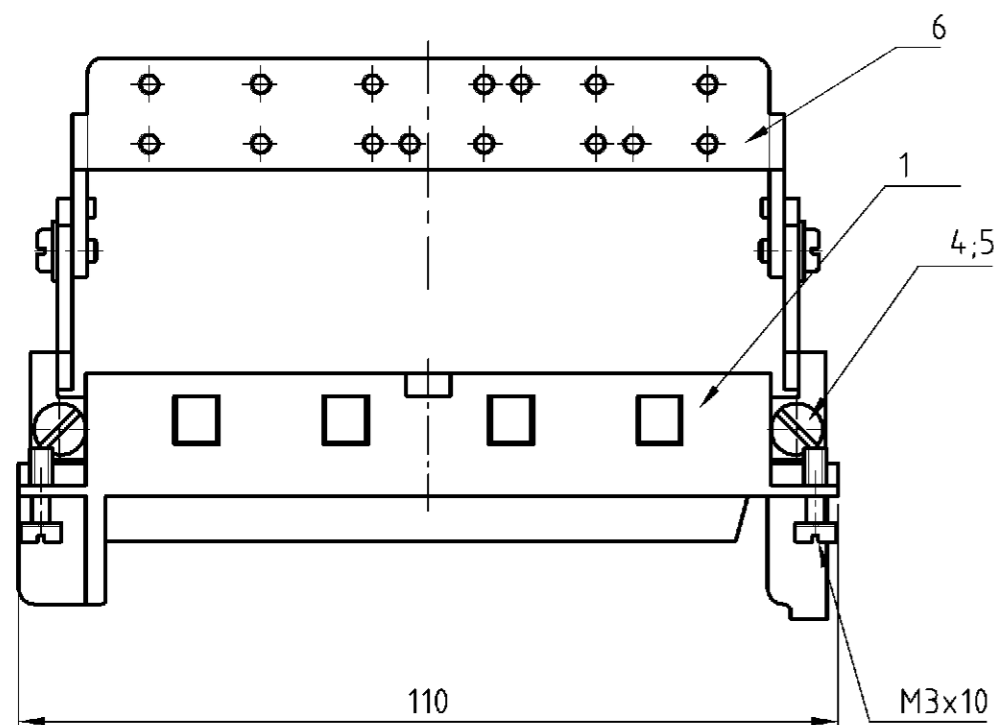
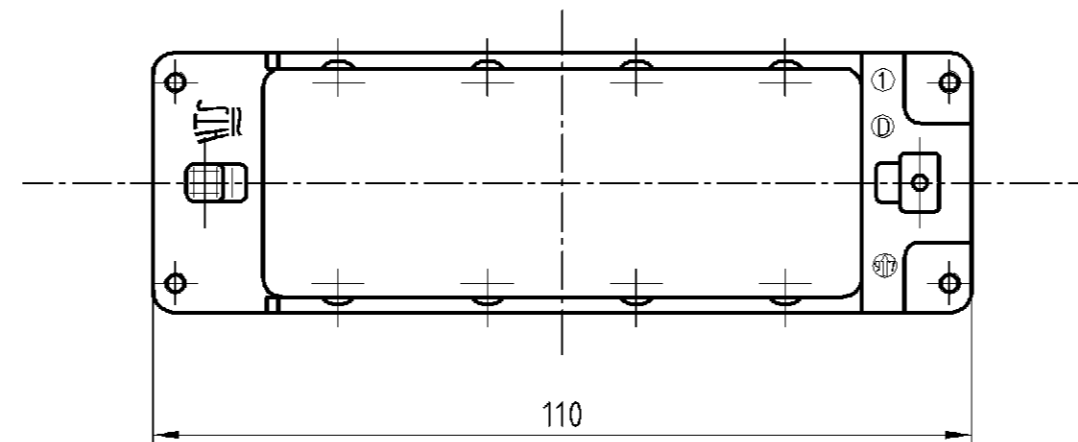
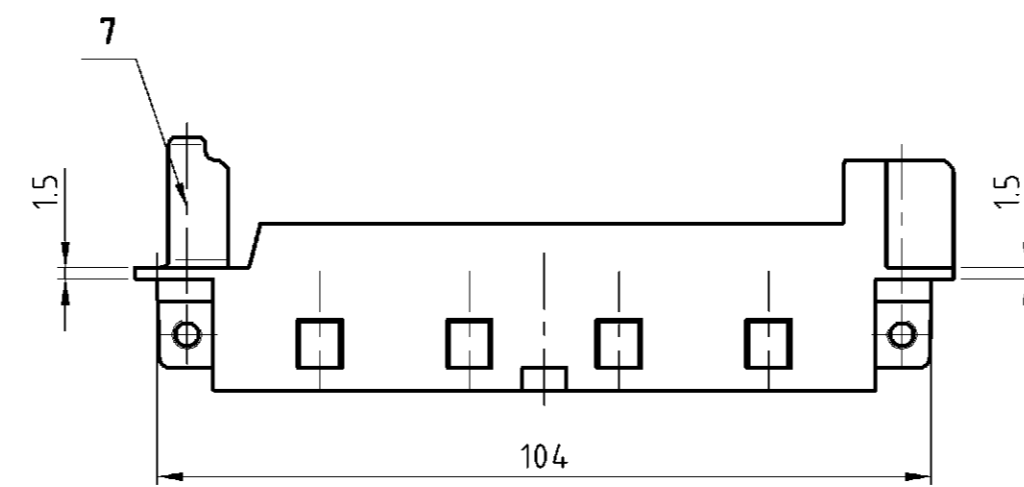
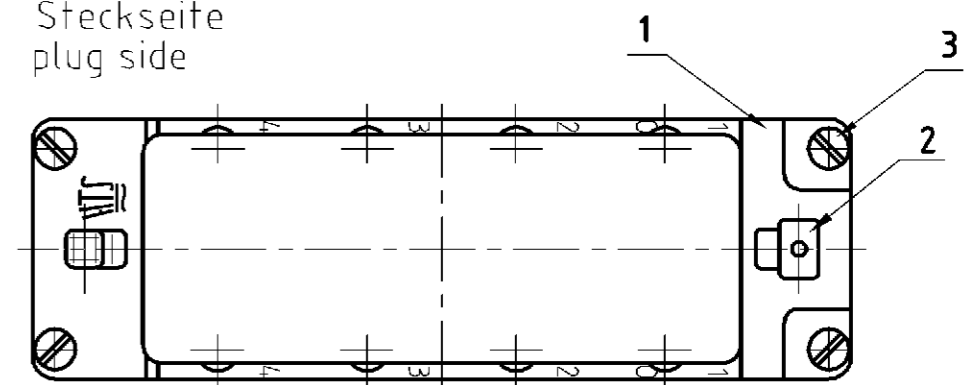


**Oberteil /
upper part**

Anschlußseite
terminal side



**Steckseite
plug side**



						1	2							
			1			Modulrahmen Oberteil module frame upper part	Zink-Leg./ zinc alloy	Verzinkt/ tin plated	7	Sonder für Griffblech/ special for grip				
			1	1		Schirmbügel schwenkbar/ screen termination roofing	Stahl/steel	Verzinkt/ tin plated	6					
			2	2		Federring/ spring lock washer	Stahl/steel	Verzinkt/ tin plated	5	DIN 128 - A4				
2	2	2	2	2	2	Zylinderschraube mit Schlitz/ cylinder screw with slit	Messing/brass	Vernickelt/ nickel plated	4	DIN EN ISO 1207				
4	4	4	4	4	4	Befestigungsschraube/ fixing screw	Stahl/steel	Vernickelt/ nickel plated	3	M3x10				
1	1	1	1	1	1	Erdkontaktfeder/ spring f. grounding cont.	Bronze/ bronze	Vernickelt/ nickel plated	2					
1	1		1	1	1	Modulrahmen/ module frame	Zink-Leg./ zinc alloy	Verzinkt/ tin plated	1					
0-70-60-50-40-30-20-1						DESCRIPTION / BENENNUNG	MATERIAL	SURFACE/COLOR	ITEM NO. Pos.	NOTES / BEMERKUNGEN				
MDL2-GR-U-8-B5-8	MDL2-GR-O-8-B5-8	MDL2-GR-O-8/GB-B1-4	MDL2-GR-U-8/SB-B1-4	MDL2-GR-O-8/SB-B1-4	MDL2-GR-U-8-B1-4	MDL2-GR-O-8-B1-4	ORDERING TEXT/BESTELTEXT	DWN wroblewski 06.10.2003	APVD Baum 06.10.2003	NAME AMP HTS Elektrotechnik 53819 Neunkirchen, Germany				
DIMENSIONS: DIMENSIONEN: mm							TOLERANCES UNLESS OTHERWISE SPECIFIED ALLGEMEIN TOLERANZEN p. ISO 8015 r. ISO 2768 - mH - E r. DIN 16901 - 14.0		PRODUCT SPEC PRODUKTSPEZ		SIZE A2	CAGE CODE 00779	DRAWING NO. ZEICHNUNGS-NR. 1108780	RESTRICTED TO NUR FUER
MATERIAL							FINISH / OBERFLÄCHE / FARBE		APPLICATION SPEC VERARBEITUNGSSPEZ		WEIGHT GEWICHT 110g, 150g	CUSTOMER DRAWING /KUNDENZEICHNUNG		
							ANGLES / WINKEL		MASSSTAB 1:1		BLATT 1	OF VON 1	REV B2	

X-ON Electronics

Largest Supplier of Electrical and Electronic Components

Click to view similar products for [Heavy Duty Power Connectors](#) category:

Click to view products by [TE Connectivity](#) manufacturer:

Other Similar products are found below :

[647757-1](#) [6643411-1](#) [6646058-2](#) [6646137-1](#) [6646138-1](#) [6646479-1](#) [6646608-1](#) [6646786-1](#) [6646940-1](#) [6651091-1](#) [6651525-1](#) [6651529-1](#)
[6651788-1](#) [696475-1](#) [702-32-01109](#) [703-25-02205](#) [73000005059](#) [73000005642](#) [73080255059](#) [73080965046](#) [765-15-0080A](#) [765-16-0080B](#)
[765-18-0080D](#) [829992-1](#) [902-77-02113](#) [PS00/A0620/6300](#) [PS25/A0420/63](#) [129-1J](#) [1409400](#) [AN0024023](#) [E6374G1](#) [e6389g2](#) [157-43GW8](#)
[MS3117-14AC](#) [1643543-1](#) [1650540-1](#) [1651811-2](#) [1766260-1](#) [1766282-1](#) [1766966-1](#) [1791340000](#) [NLDFT-3-BL-L-S120-M40A](#) [NLDFT-N-](#)
[W-L-C240-M40B](#) [NLS-2-R-C240-M40B](#) [NLS-N-W-C240-M40B](#) [NPS-3-BL-T6](#) [1986615-1](#) [2-1589900-8](#) [2199314-1](#) [KA8102](#)