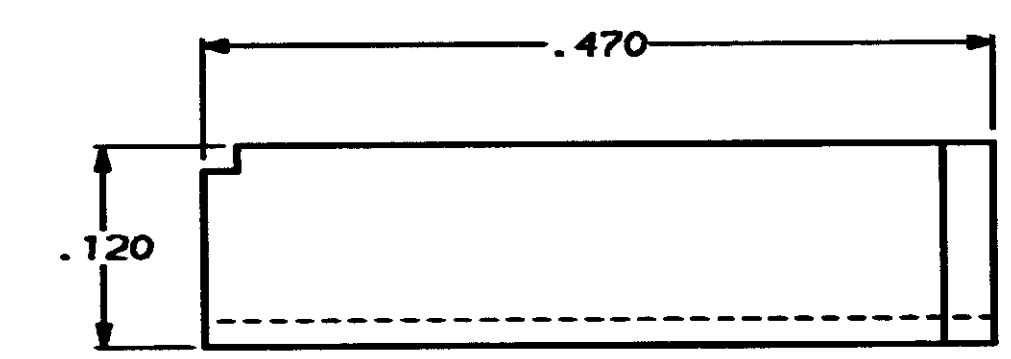
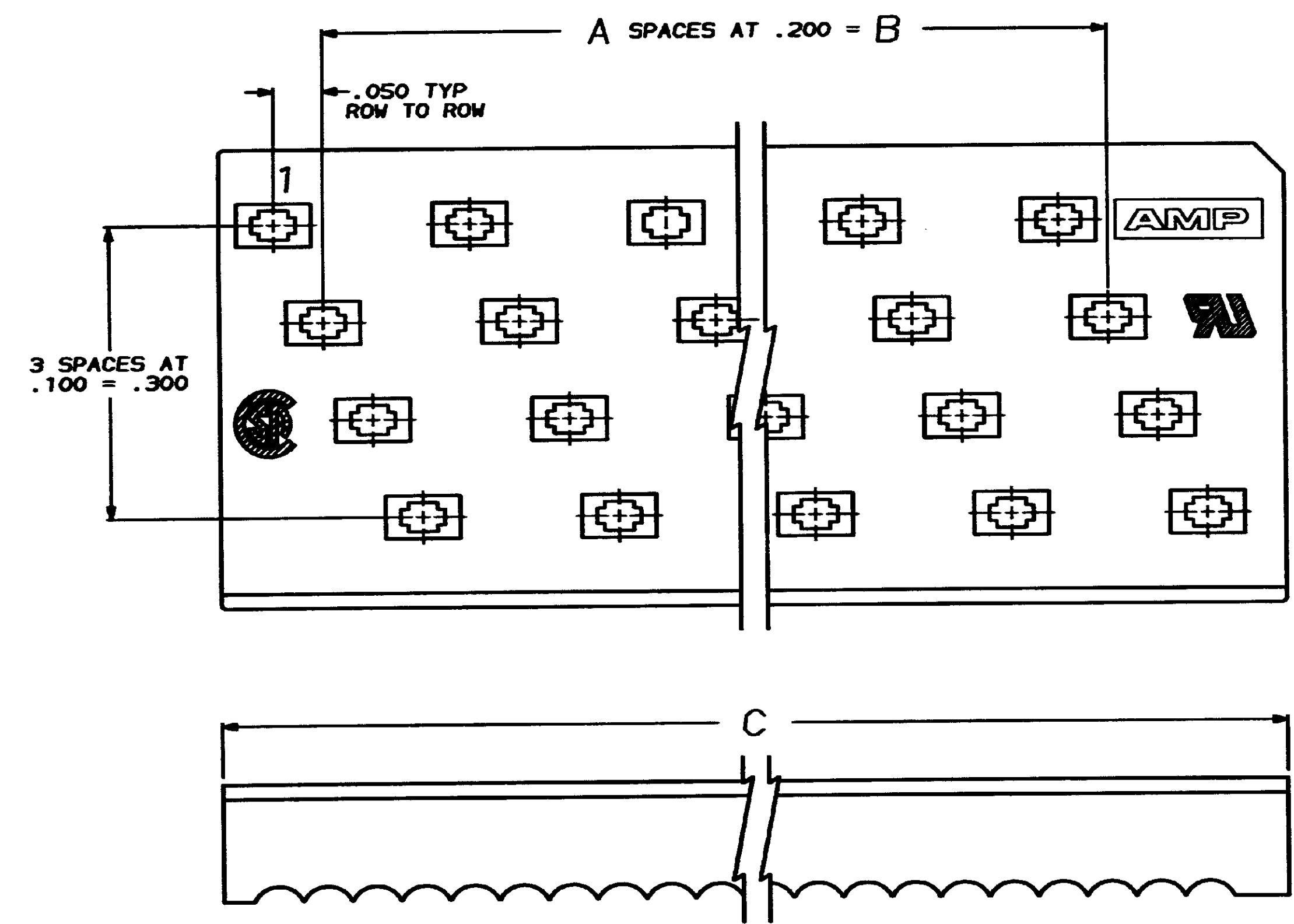


REVISONS					
REV	DATE	DESCRIPTION	DATE	APPD	
0		RELEASED WAS 88-5130-2			
A		REVSD/ECN CF-1706			



3.086	2.800	14	60	1-111355-3
2.886	2.600	13	56	1- -2
2.686	2.400	12	52	1- -1
2.486	2.200	11	48	1- -0
2.286	2.000	10	44	-9
2.086	1.800	9	40	-8
1.886	1.600	8	36	-7
1.686	1.400	7	32	-6
1.486	1.200	6	28	-5
1.286	1.000	5	24	-4
1.086	.800	4	20	-3
.886	.600	3	16	-2
.686	.400	2	12	111355-1
C	B	A	NO OF POSN	PART NUMBER

DO NOT SCALE PRINT. UNLESS SPECIFIED DIMENSIONS IN INCHES TOLERANCES ON: 2 PLC DEC ± .005 3 PLC DEC ± .005 ANGLES ± 0°30'	DR - S WELDON 2-25-88 CHK - W J LENKER 2-25-88 APPD - M.A. VISELLI 2-25-88 APPD - D. HOFFMAN 2-25-88	AMP INCORPORATED Harrisburg, Pa. 17105
MATERIAL FLAME RETARDANT, 94 V-0 RATED, GLASS FILLED POLYESTER, COLOR, BLACK	NAME COVER, PADDLEBOARD, FULL ROW, AMP-LATCH	
FINISH	APPLICATION SPEC	SIZE D FSC# NO 00779 DRAWING NO 111355
	WEIGHT	SCALE 10:1 SHEET - OF -

CUSTOMER DRAWING

X-ON Electronics

Largest Supplier of Electrical and Electronic Components

Click to view similar products for [Headers & Wire Housings](#) category:

Click to view products by [TE Connectivity](#) manufacturer:

Other Similar products are found below :

[95000-104TRLF](#) [10135584-644402LF](#) [DF62W-EP2022PCA](#) [95000-106TRLF](#) [DF62W-2022SCA](#) [DF62W-EP2022PC](#) [2203348](#) [DF62W-2022SC](#) [1084018](#) [1029039](#) [1084017](#) [802-10-012-10-002000](#) [1112640](#) [1112639](#) [000-34000](#) [0009482033](#) [0009507031](#) [57102-S06-03LF](#) [57202-S52-04LF](#) [PCN6-15S-2.5E](#) [0039019024](#) [58102-G61-06LF](#) [582553-1](#) [0009508121](#) [0050291907](#) [018731A](#) [LY20-4P-DT1-P1E-BR](#) [02.125.8002.8](#) [60101931](#) [60598-1 \(Cut Strip\)](#) [M1625-3R/100](#) [61062-3](#) [61082-181009](#) [636-1427](#) [638009-1](#) [641938-9](#) [641991-4](#) [644168-1](#) [647662-1](#) [65039-019ELF](#) [65817-002LF](#) [65817-015LF](#) [65863-015LF](#) [66207-023LF](#) [67016-026LF](#) [67046-001LF](#) [67095-007LF](#) [68002-116](#) [68016-236H](#) [68648-049](#)